

PRIMARY PART # SS-802SM TL494
SUBSTITUTE PART # SS-0722 TL594
PER ECO 3450

10UF 35V (C19) WAS DELETED
PER ECO 3483

PART # SS-0300 (BC856BLT1) WAS DELETED
NEW PART # SS-210SM (BCX71J)
PART # SS-0357 (BC846BL) WAS DELETED
NEW PART # SS-209SM (BCX70J)
PER ECO 3476

CER-106B-024 (10UF 35V) HAS BEEN ADDED
REF DES C25
PER ECO 3609

330UF 25V CAP (CERHF-337A-024) HAS BEEN
REPLACED. REF DES C13
NEW PART # 330UF 63V (CERHF-337D-024)
PER ECO 3633


PART # RM/10-103B 10K 5% HAS BEEN
REPLACED. REF DES R129 R229
NEW PART # RM/10-683B 68K 5%
PER ECO 3509

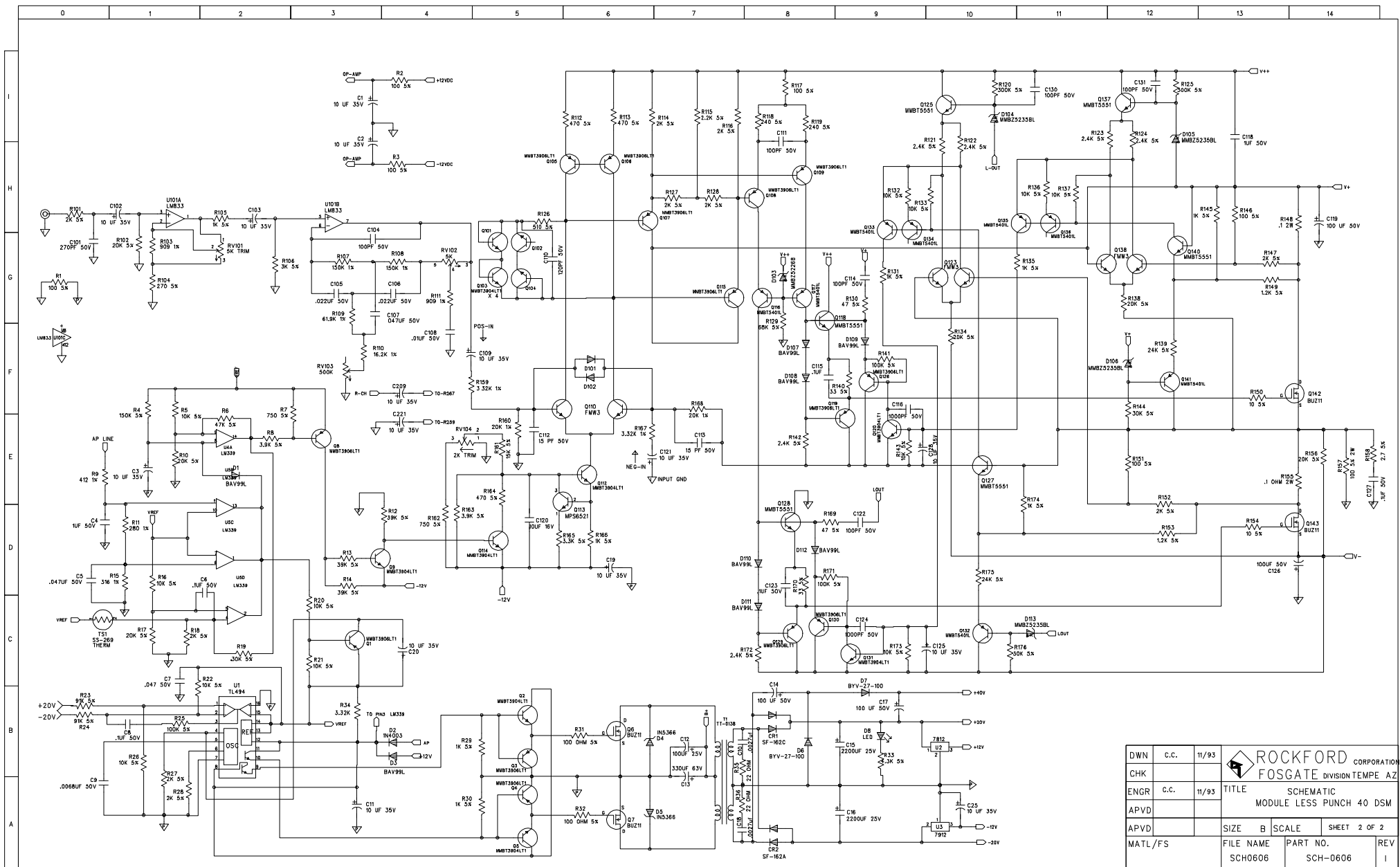
SS-209SM (BCX70J) HAS BEEN REPLACED
REF DES Q2 5 9 101 102 103 104 112 114 120 131
NEW PART # SS-0792 (MMBT3904LT1)


SS-210SM (BCX71J) HAS BEEN REPLACED
REF DES Q1 3 4 8 105 106 107 108
109 115 119 126 129 130
NEW PART # SS-0791 (MMT3906LT1)
PER ECO 3569

INCORRECT QTY OF CDS-104CCDA ON BILL
DELETE (1) PER ECO 3595

CORD	REV	REVISION RECORD	AUTHORITY	DATE
	A	PRODUCTION RELEASE	W.C.	2-94
	B	ECO 3450	W.C.	2-94
	C	ECO 3476	W.C.	2-94
	D	ECO 3483	W.C.	3-94
	E	ECO 3509	W.C.	3-94
	F	ECO 3569	W.C.	8-94
	G	ECO 3595	W.C.	8-94
	H	ECO 3609	W.C.	8-94
	I	ECO 3633		

DWN	C.C.	12-93	<div><div></div><div>ROCKFORD FOSGATE</div><div><small>CORPORATION</small> <small>DIVISION</small> TEMPE AZ</div></div>			
CHK						
ENGR	C.C.	12-93	TITLE			
APVD			SCHEMATIC			
APVD			MOD LESS PUNCH 40 DSM			
APVD			SIZE A	SCALE	SHEET 1 OF 2	
MATL/FS			FILE NAME		PART NO.	
			SCH06061		SCH-0606	
					REV	I



DWN	C.C.	11/93	 ROCKFORD FOSGATE CORPORATION DIVISION TEMPE AZ			
CHK						
ENGR	C.C.	11/93	TITLE	SCHEMATIC		
APVD				MODULE LESS PUNCH 40 DSM		
APVD			SIZE	B	SCALE	SHEET 2 OF 2
MATL/FS			FILE NAME	SCH0606	PART NO.	REV
				SCH-0606		I