

Low Pass Filter

50Ω DC to 30 MHz

Maximum Ratings

Operating Temperature -40°C to 85°C

Storage Temperature -55°C to 100°C

RF Power Input 0.5W Max

Permanent damage may occur if any of these limits are exceeded.

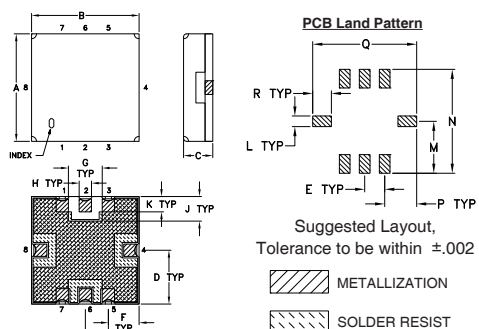
Pin Connections

RF IN 2

RF OUT 6

GROUND 1, 3, 4, 5, 7, 8

Outline Drawing

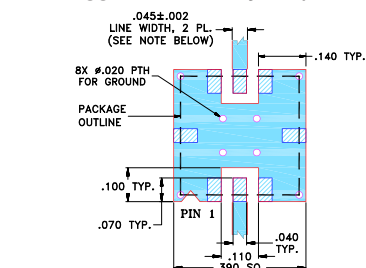


Outline Dimensions (inch/mm)

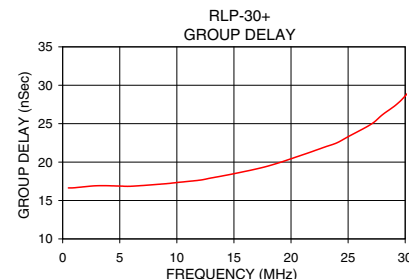
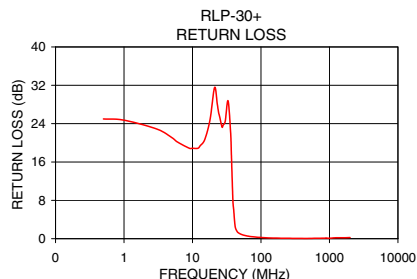
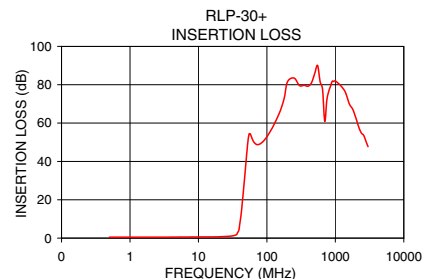
A	B	C	D	E	F	G	H	J
.350	.350	.150	.175	.075	.100	.110	.040	.080
8.89	8.89	3.81	4.45	1.93	2.54	2.79	1.02	2.03

K	L	M	N	P	Q	R	wt.
.050	.040	.195	.390	.120	.390	.070	grams
1.27	1.02	4.95	9.91	3.05	9.91	1.78	0.50

Demo Board MCL P/N: TB-332 Suggested PCB Layout (PL-176)



- TRACE WIDTH IS SHOWN FOR FR4 WITH DIELECTRIC THICKNESS .025" ± .002"; COPPER: 1/2 OZ. EACH SIDE. FOR OTHER MATERIALS TRACE WIDTH MAY NEED TO BE MODIFIED.
 - BOTTOM SIDE OF THE PCB IS CONTINUOUS GROUND PLANE.
- DENOTES PCB COPPER LAYOUT WITH SMOBC (SOLDER MASK OVER BARE COPPER)
- DENOTES COPPER LAND PATTERN FREE OF SOLDER MASK



Notes

- Performance and quality attributes and conditions not expressly stated in this specification document are intended to be excluded and do not form a part of this specification document.
- Electrical specifications and performance data contained in this specification document are based on Mini-Circuits' applicable established test performance criteria and measurement instructions.
- The parts covered by this specification document are subject to Mini-Circuits standard limited warranty and terms and conditions (collectively, "Standard Terms"); Purchasers of this part are entitled to the rights and benefits contained therein. For a full statement of the Standard Terms and the exclusive rights and remedies thereunder, please visit Mini-Circuits' website at www.minicircuits.com/MCLStore/terms.jsp



www.minicircuits.com P.O. Box 350166, Brooklyn, NY 11235-0003 (718) 934-4500 sales@minicircuits.com

Features

- high rejection
- sharp insertion loss roll off
- excellent VSWR, 1.15:1 typ. @ passband
- aqueous washable

Applications

- satellite
- wireless communications
- receivers / transmitters



CASE STYLE: GP1212

+RoHS Compliant

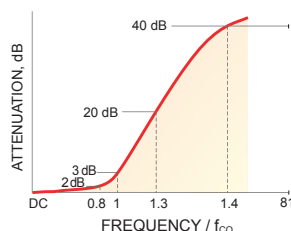
The +Suffix identifies RoHS Compliance. See our web site for RoHS Compliance methodologies and qualifications

Reel Size	Devices/Reel
7"	10, 20, 50, 100, 200
13"	500, 1000

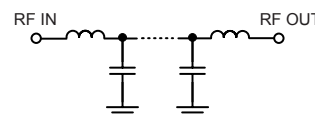
Low Pass Filter Electrical Specifications (T_{AMB} = 25°C)

PASSBAND (MHz)	f _{co} , MHz Nom.	STOPBAND (MHz)	VSWR (:1)
(Loss < 2dB)	(Loss 3dB)	(Loss > 20dB) (Loss > 40dB)	Passband Typ. Stopband Typ.
DC - 30	37	47 - 53 53 - 3000	1.15 20

Typical Frequency Response



Functional Schematic



Typical Performance Data at 25°C

Frequency (MHz)	Insertion Loss (dB) \bar{x}	σ	Return Loss (dB)	Frequency (MHz)	Group Delay (nSec)
0.5	0.50	0.01	24.98	0.5	16.64
25.0	0.86	0.01	25.36	1.0	16.66
30.0	1.08	0.01	24.46	3.0	16.92
36.0	1.85	0.05	22.30	5.0	16.88
37.0	2.62	0.14	17.45	6.0	16.86
39.0	4.17	0.33	7.75	9.0	17.18
40.0	6.92	0.45	6.00	10.0	17.34
42.0	12.41	0.68	2.51	12.0	17.65
45.0	23.23	0.76	1.47	13.0	17.93
47.0	30.50	0.84	1.21	15.0	18.49
53.0	50.90	1.81	0.84	18.0	19.49
100.0	52.85	0.47	0.25	21.0	20.94
500.0	85.89	4.68	0.07	23.0	21.98
1000.0	81.99	3.92	0.09	24.0	22.50
1400.0	76.06	1.88	0.20	25.0	22.31
2000.0	62.57	0.80	0.24	27.0	24.92
2600.0	53.56	0.54	0.48	28.0	26.15
3000.0	47.74	0.53	0.33	30.0	28.61

Mouser Electronics

Authorized Distributor

Click to View Pricing, Inventory, Delivery & Lifecycle Information:

[Mini-Circuits:](#)

[RLP-30+](#)