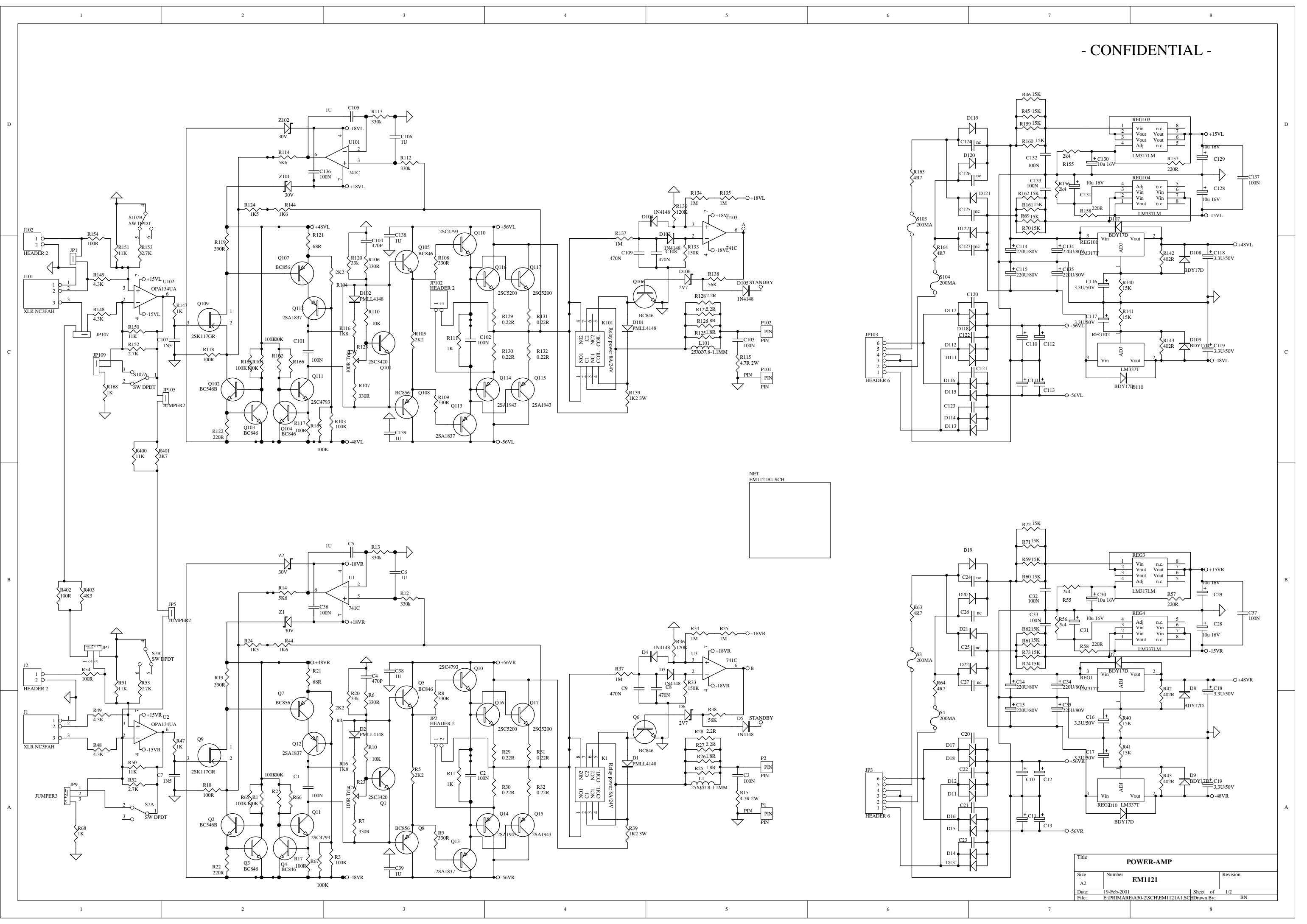


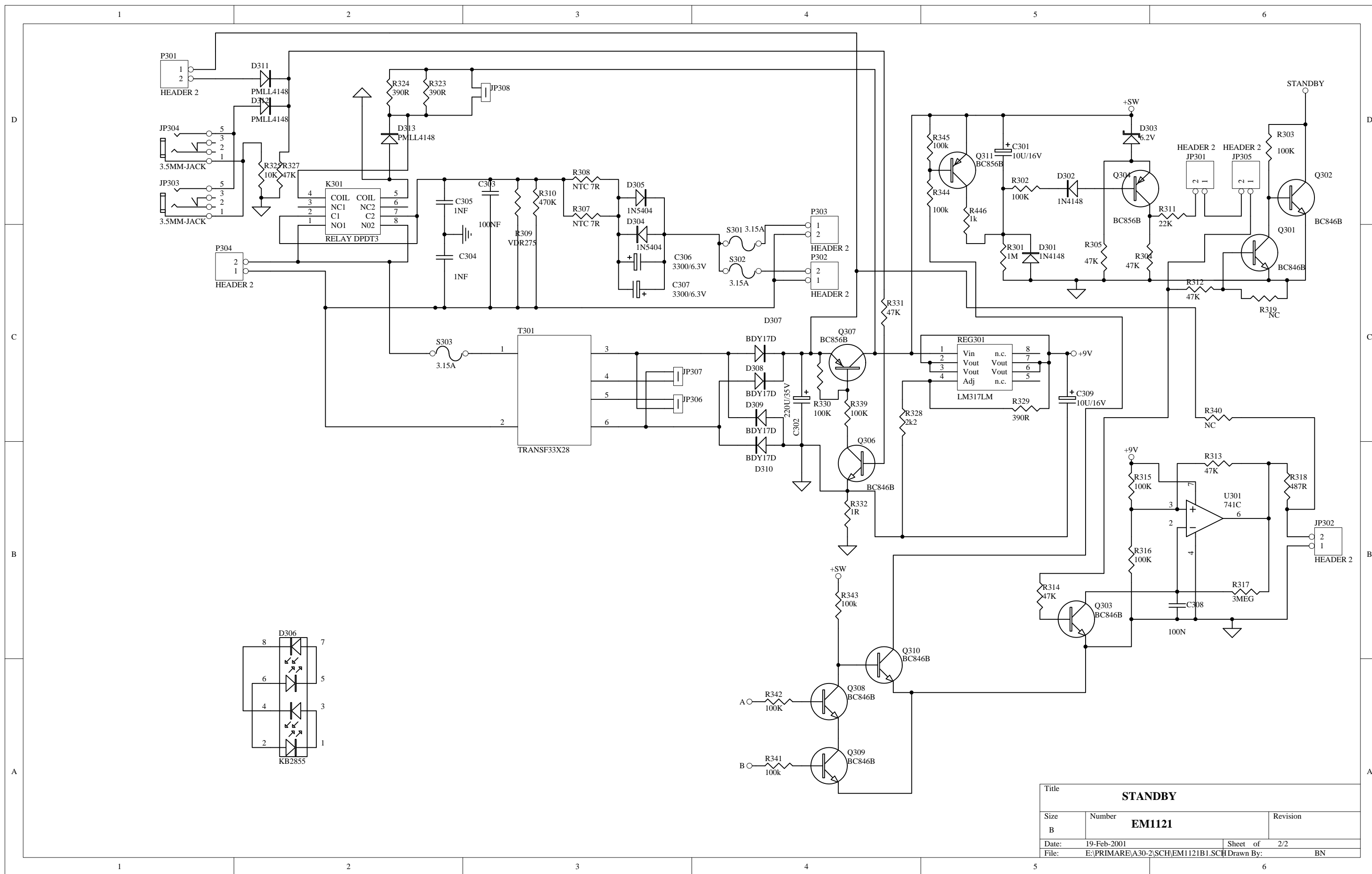
A30.2 POWER AMPLIFIER SERVICE MANUAL

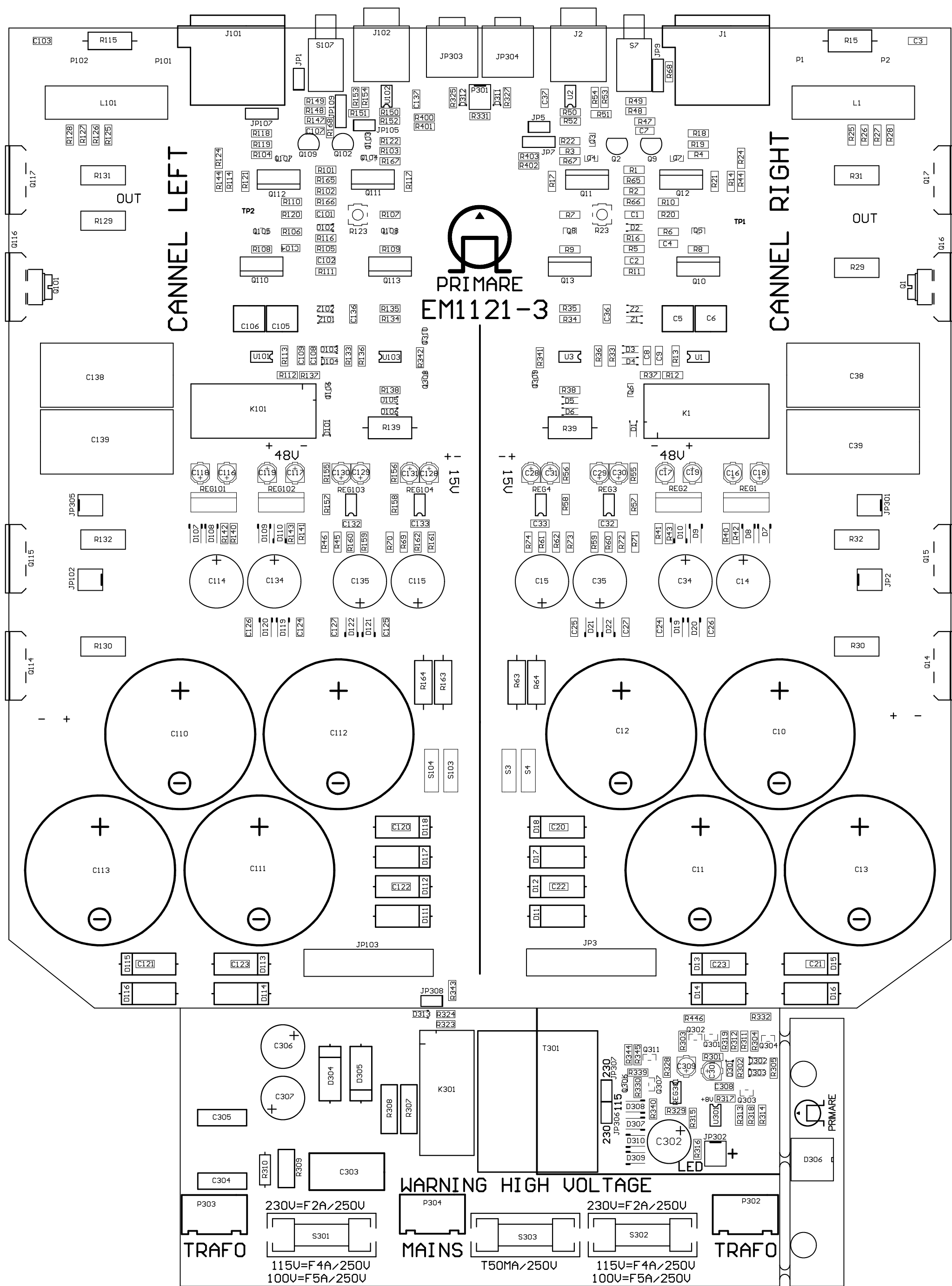
CONTENTS

1. CIRCUIT DIAGRAMS
2. ADJUSTMENT
4. PLACING AF JUMPER
5. TECHNICAL SPECIFICATIONS



Title		
POWER-AMP		
Size	Number	Revision
A2	EM1121	
Date:	19-Feb-2001	Sheet of 1/2
File:	E:\PRIMARE\A30-2SCH\EM1121A1.SCH	Drawn By: BN



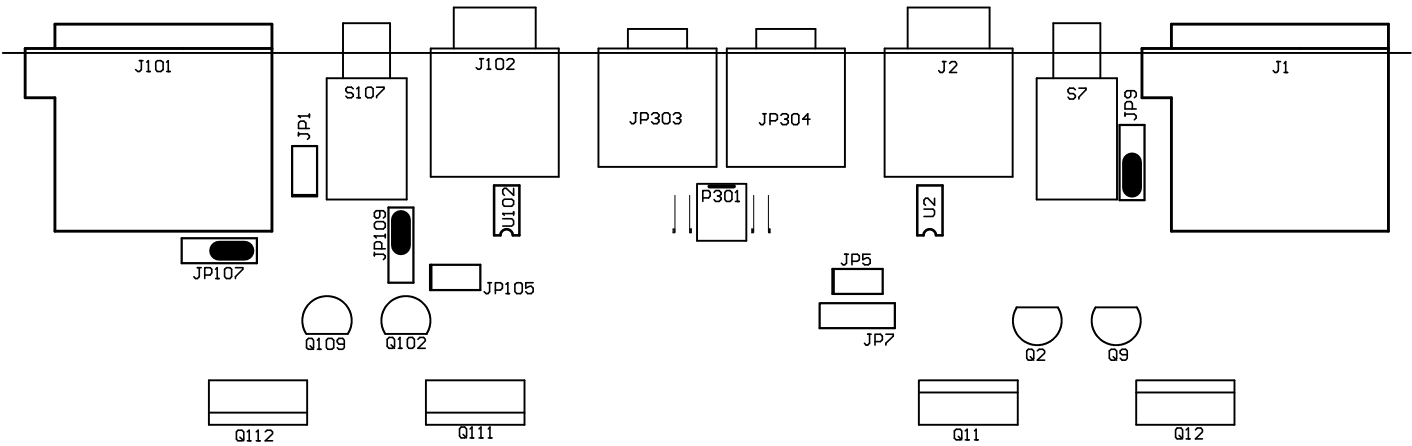


IDLE CURRENT ADJUSTMENT

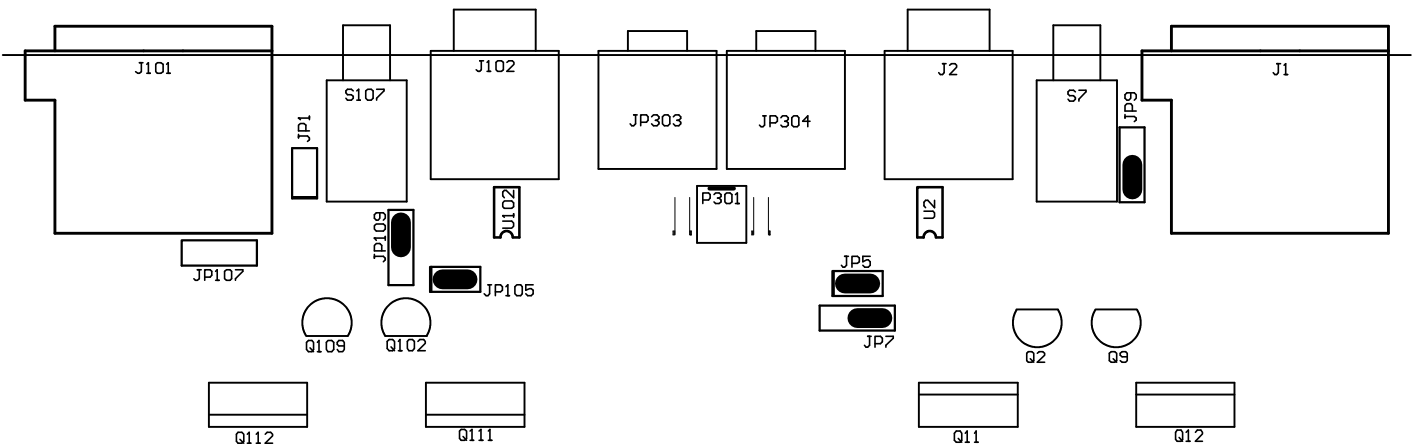
- 1: Connect the voltmeter to JP2 (JP102)
 ADJUST R23 (R123) TO 20mV
2. After the power has been on for 60 min
 readjust R23 (R123)
3. Remove the voltmeter.

Instructions apply to the Right channel.
Instructions given in brackets apply to the
Left channel.

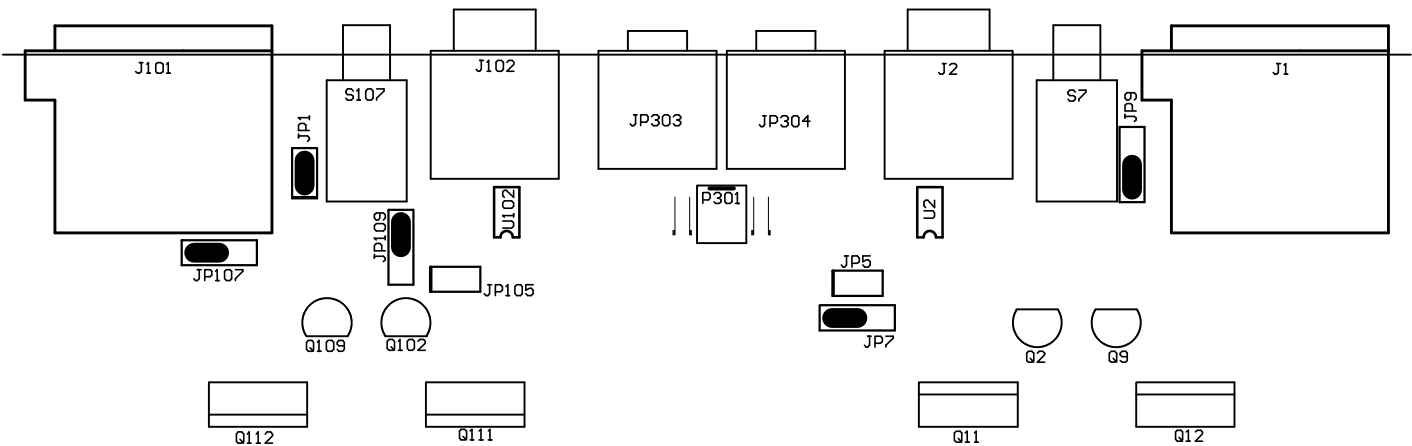
PLACING AF JUMPER



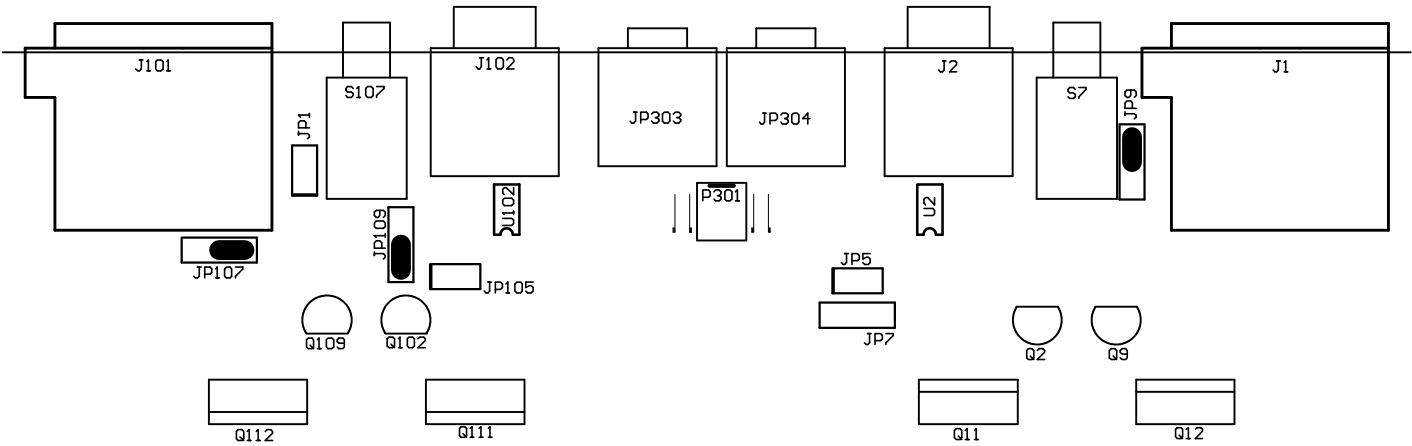
2X120W
STANDARD XLR AND RCA IN



1X380W
IN LEFT RCA
SPEAKER + TO (+ LEFT SPEAKER)
SPEAKER - TO (+ RIGHT SPEAKER)
INPUT SWITCH LEFT TO RCA
INPUT SWITCH RIGHT TO XLR



1X380W
IN LEFT XLR
SPEAKER + TO (+ LEFT SPEAKER)
SPEAKER - TO (+ RIGHT SPEAKER)
INPUT SWITCH LEFT TO RCA
INPUT SWITCH RIGHT TO RCA



2X120W SENSITIVITY ADJUST TO A20
IN LEFT RCA AND RIGHT RCA
INPUT SWITCH LEFT TO RCA
INPUT SWITCH RIGHT TO RCA

TECHNICAL SPECIFICATIONS

Output power per channel	120W/8 ohm,200W/4 ohm (1X400W)
Output impedance	0.03 ohm
DC offset	<5mV
Frequency response	<10HZ-100KHZ -3db
Signal to noise A-weighted	100 dB
THD+noise	<0.08%
Standby	<3.5W
DIMENSIONS (WXDXH)	430X385X100 MM
Weight	16Kg