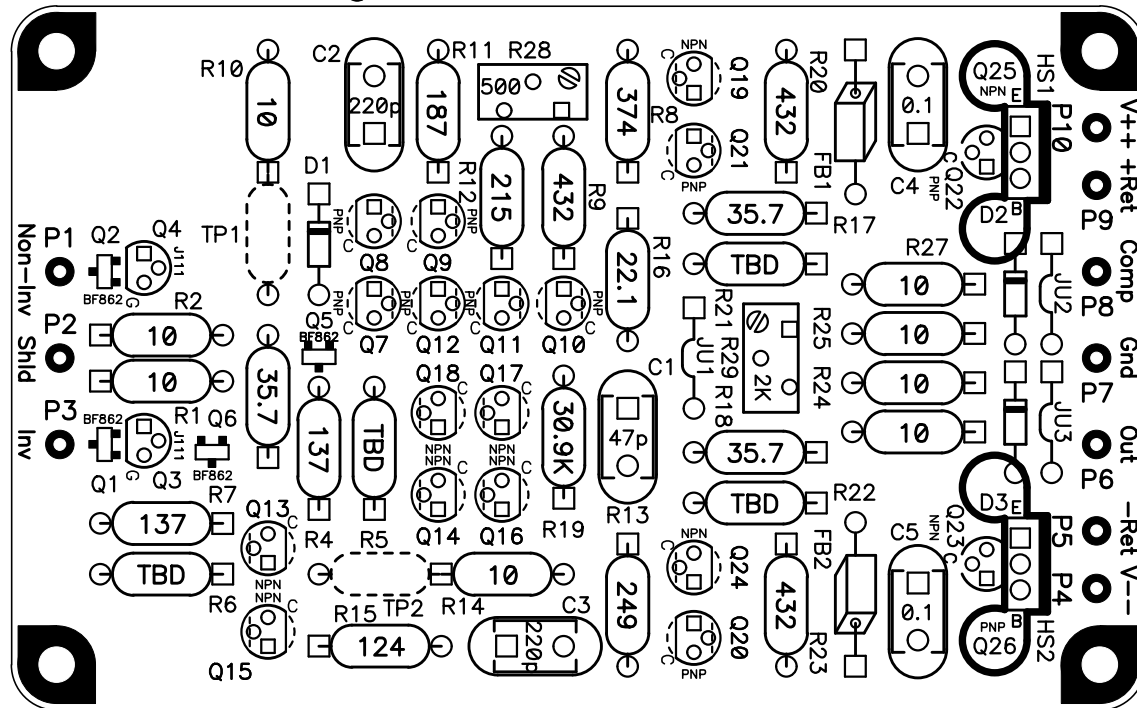
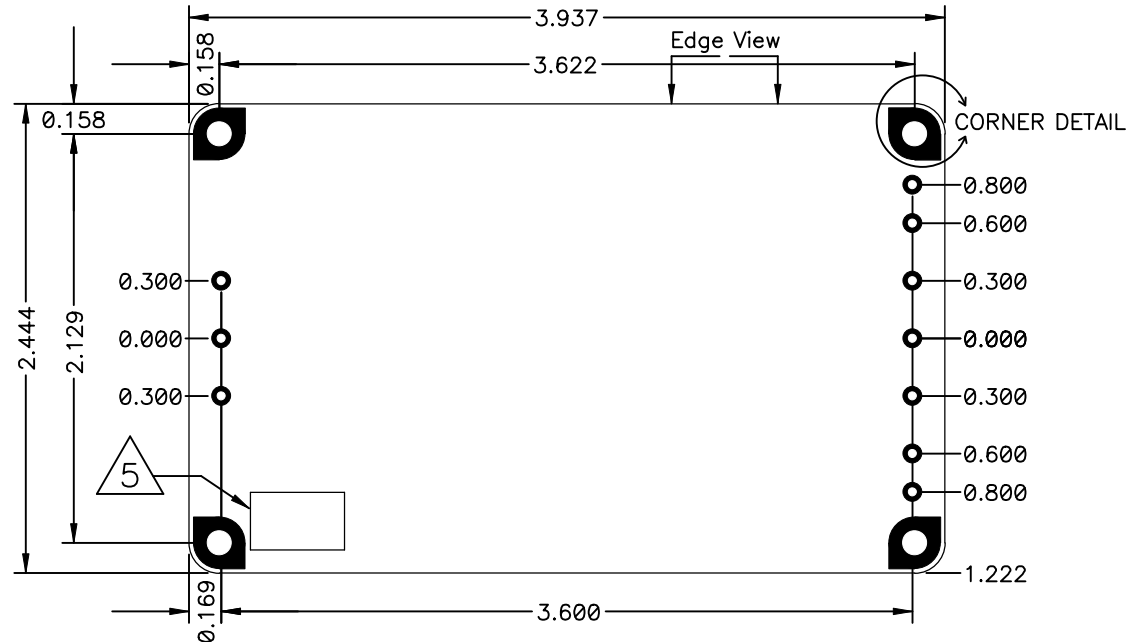
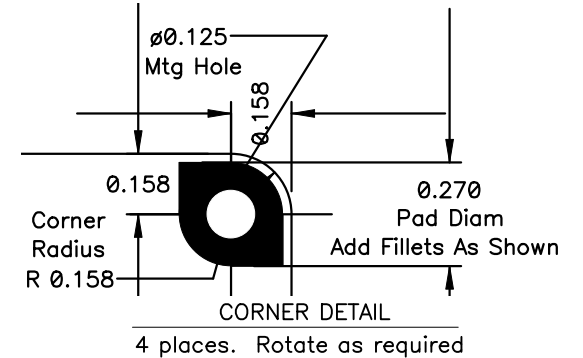
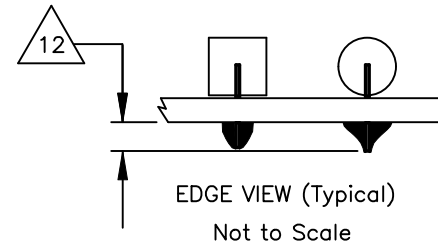


DIY AUDIO DISCRETE OPAMP  
SWOPA Disc Opamp THD1  
PWB DWG SWOPA2885PWB1 REV A



COMPONENT PLACEMENT

Solid transistor outlines for EBC pinout; dashed outlines for CBE pinout.  
Component values shown for ref only. See Parts List for correct values.



NOTES: UNLESS OTHERWISE SPECIFIED

- ALL MATERIALS ARE TO BE ROHS COMPLIANT. FABRICATE PER ANSI/IPC-A-600, IPC-QE-605, IPC-4101, IPC-4552 AND IPC-SM-840 SPECIFICATIONS.
- MATERIAL: BASE MATERIAL LAMINATED EPOXY GLASS (COLOR GREEN) .056 THK (.062 MAX) ROHS COMPLIANT FR-4 PER IPC-4101 SLASH SHEETS #26 OR #83 OR #98 WITH MINIMUM T<sub>g</sub> 170 DEGREE C OR HIGHER, T<sub>d</sub> 340 DEGREE C OR HIGHER AND FLAME RATED UL 94V-0.
- SOLDERMASK BOTH SIDES OF BOARD OVER BARE COPPER WITH ROHS COMPLIANT MATERIAL PER ANSI/IPC-SM-840, COLOR SHALL BE GREEN.
- APPLY FINISH OR PLATING TO EXPOSED COPPER, BOTH SIDES AS SPECIFIED IN PURCHASE DOCUMENTS.
- INDICATED AREA ON BOTTOM SIDE AVAILABLE FOR APPLICATION OF PCB MANUFACTURE LOGO, UL MARKING, DATE-CODE AND ROHS COMPLIANT SYMBOL. USE OF OTHER LOCATION TO BE APPROVED BY PURCHASER.
- APPLY SILKSCREEN TO COMPONENT SIDE OF BOARD USING NON-CONDUCTIVE ROHS COMPLIANT WHITE EPOXY INK.
- SEE ARTWORK WITH SAME DRAWING NUMBER AND REVISION AS THIS DRAWING.
- HOLE LOCATIONS SPECIFIED IN SEPARATE DRILL FILE TAKE PRECEDENCE OVER THIS DWG AND ARTWORK. DIMENSIONS ON DWG TAKE PRECEDENCE OVER ARTWORK. TOLERANCE ARE: .XX=+/- .01; .XXX=+/- .005; ANGLES=2 DEG
- SEE SEPARATE DRILL FILE FOR HOLE LOCATIONS. SELECTED HOLE LOCATIONS SHOWN ON THIS DWG FOR REF ONLY.
- HOLE SIZES ARE SPECIFIED AS FINAL DIMENSIONS AFTER PLATING AND FINISHING. UNLESS OTHERWISE SPECIFIED ALL HOLES TO BE PLATED.
- HOLE PLATING TO BE AS SPECIFIED IN PURCHASE DOCUMENTS.
- TRIM SOLDER FILLETS AND COMPONENT LEADS TO 0.100" (MAX) BEYOND BOARD SURFACE ON BACK SIDE.
- DESIGN GEOMETRY MINIMUM FEATURE SIZES:  
TRACE WIDTH 10 MILS  
HOLE-TO-HOLE 15 MILS  
SILKSCREEN LINE 8 MILS  
TRACE-TO-TRACE; TRACE-TO-PAD; PAD-TO-PAD 10 MILS  
BOARD EDGE-TO-COPPER 20 MILS  
SILKSCREEN-TO-BARE COPPER 8 MILS

REVISION HISTORY

- A. WORKING DWG FOR PRELIMINARY DEVELOPMENT.  
NOT RELEASED.

Title		
SWOPA DISC OPAMP THD(1) PWB		
Size	Number	Rev
8.5x14	SWOPA2885PWB1	A
Date	Thu Apr 25, 2013	Drawn by D. Chisholm
File	SWOPA_Post2885PWB_A.pcb	Sheet of