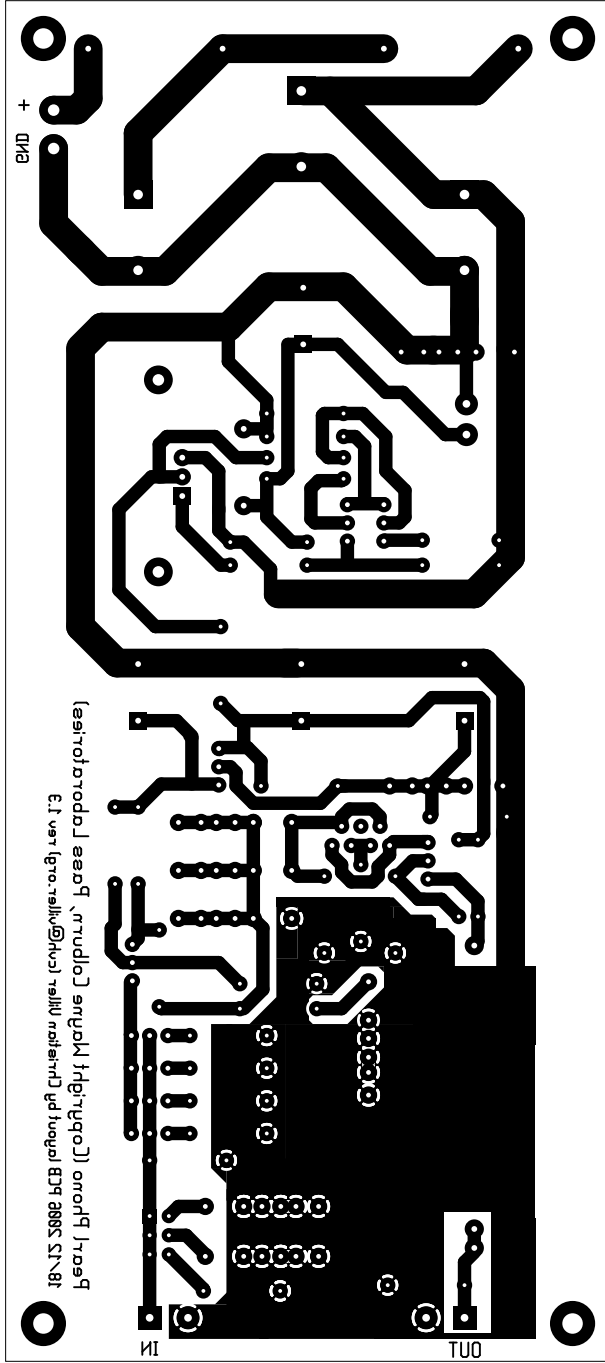
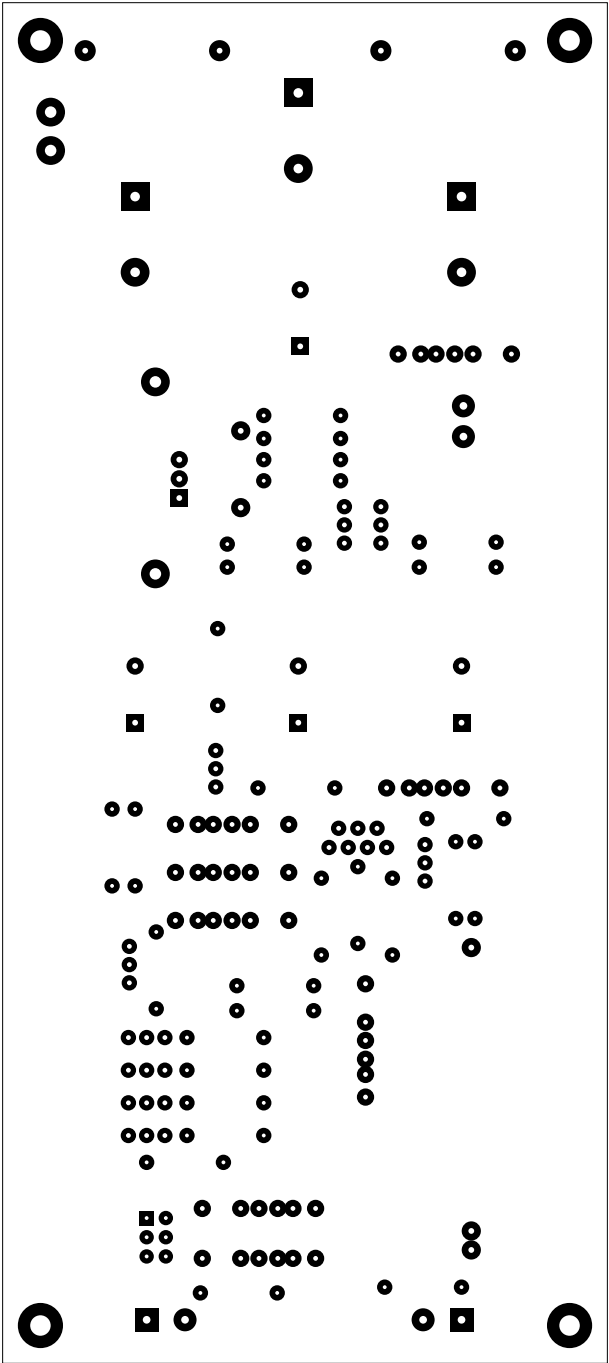


2. solder
3. component
4. componentmask
5. soldermask
6. plated-drill
7. topsilk
8. bottomsilk
9. topassembly
10. bottomassembly
11. fab

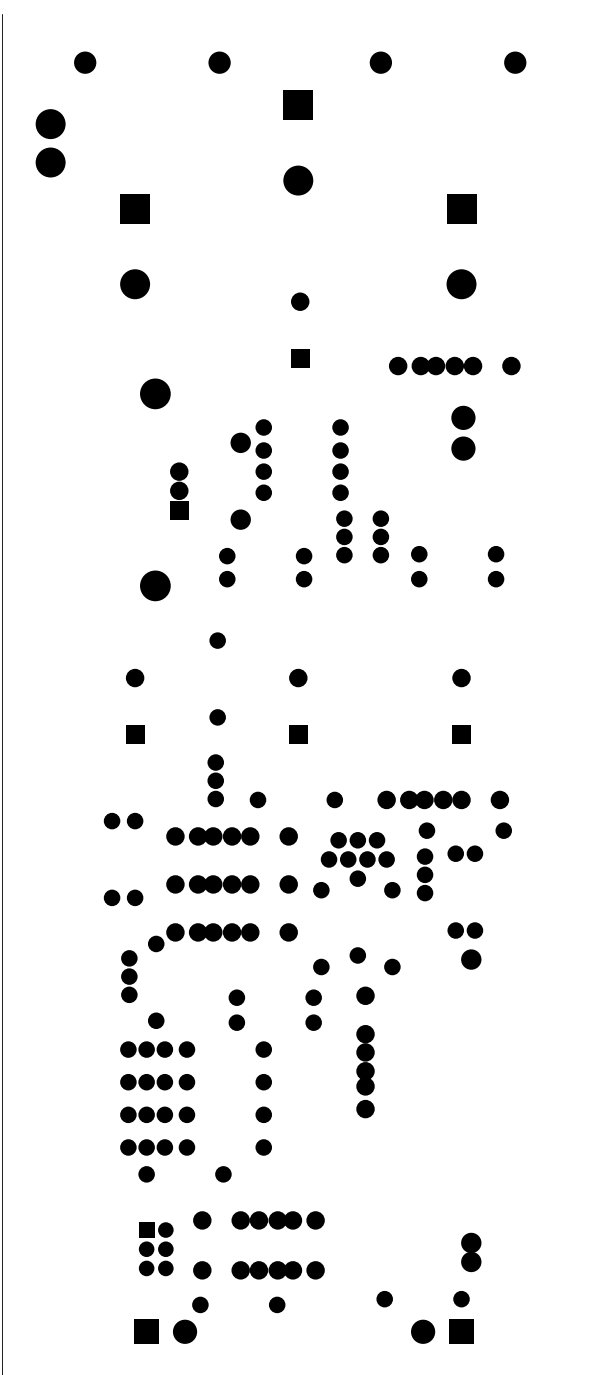
Layer solder



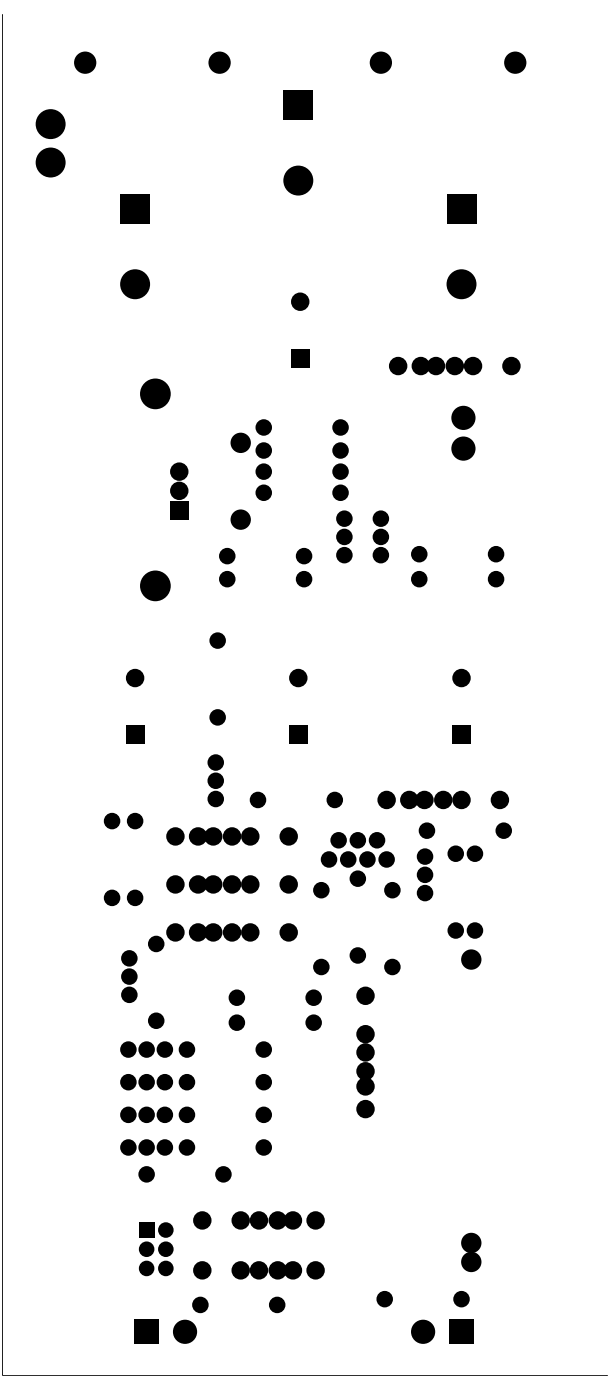
Layer component



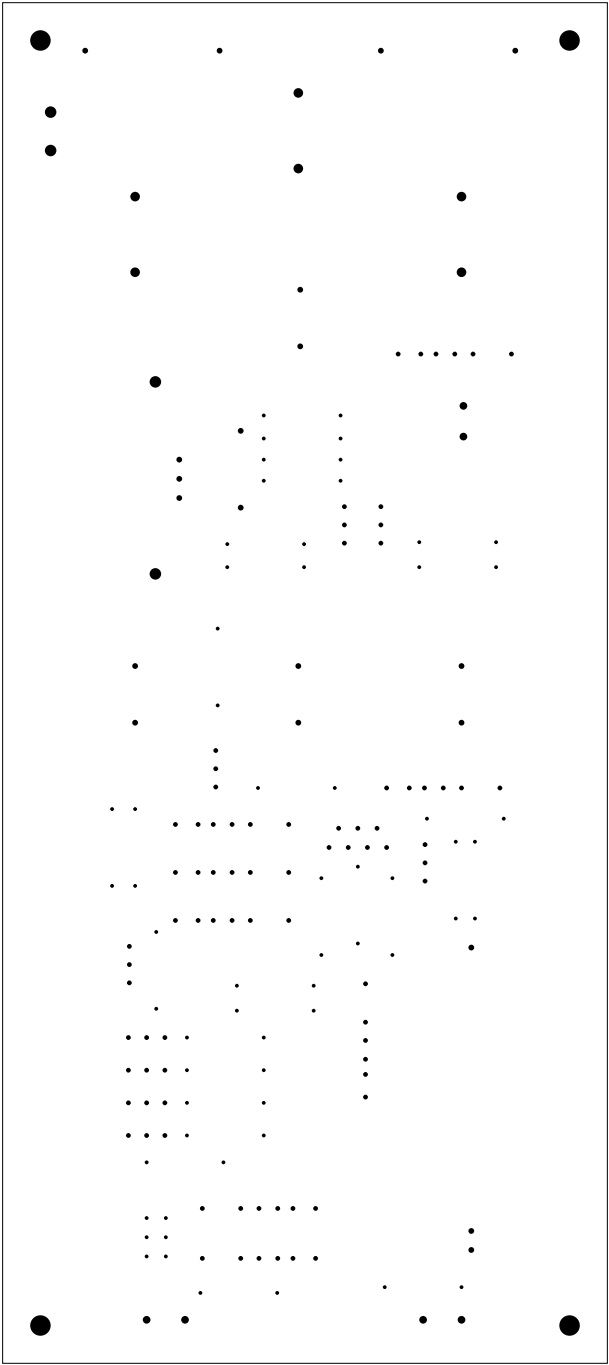
Layer componentmask



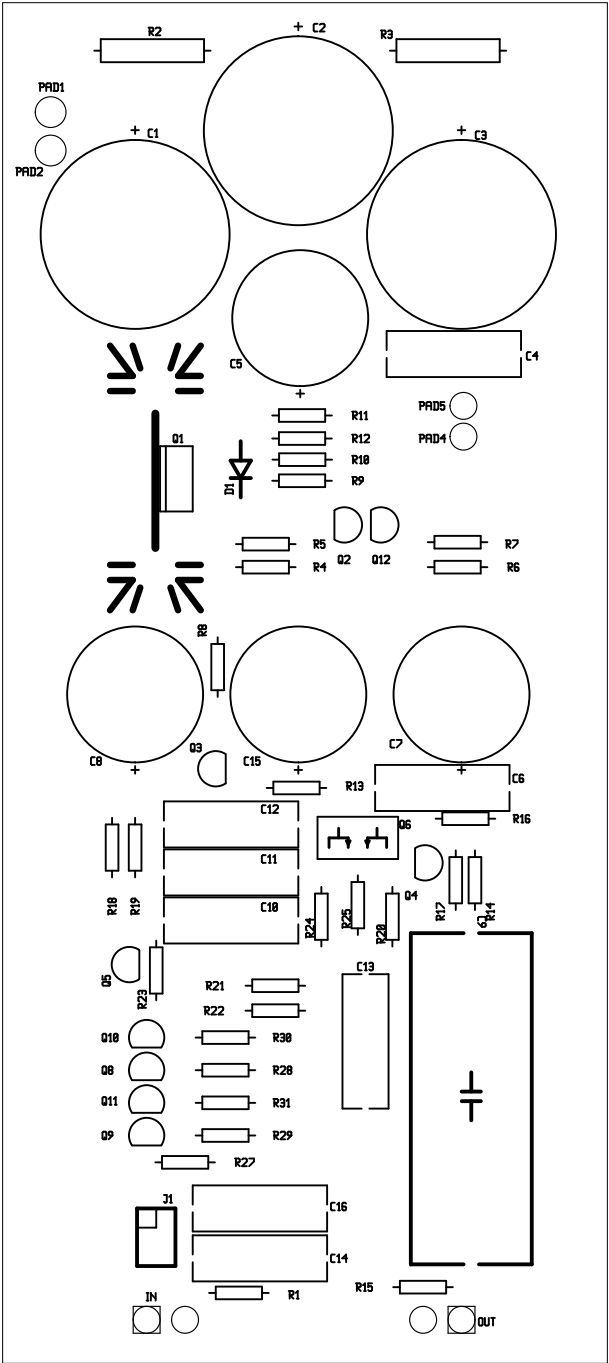
Layer soldermask



Layer plated-drill

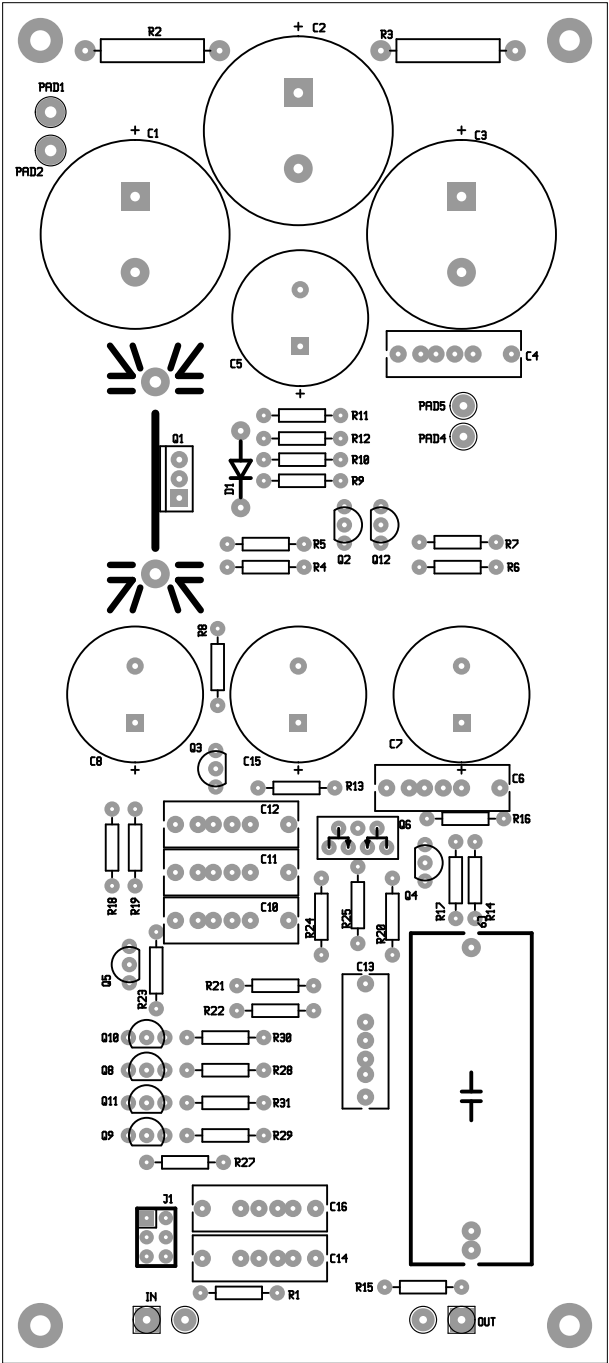


Layer topsilk



Layer bottomsilk

Layer topassembly



There are 7 different drill sizes used in this layout, 184 holes total

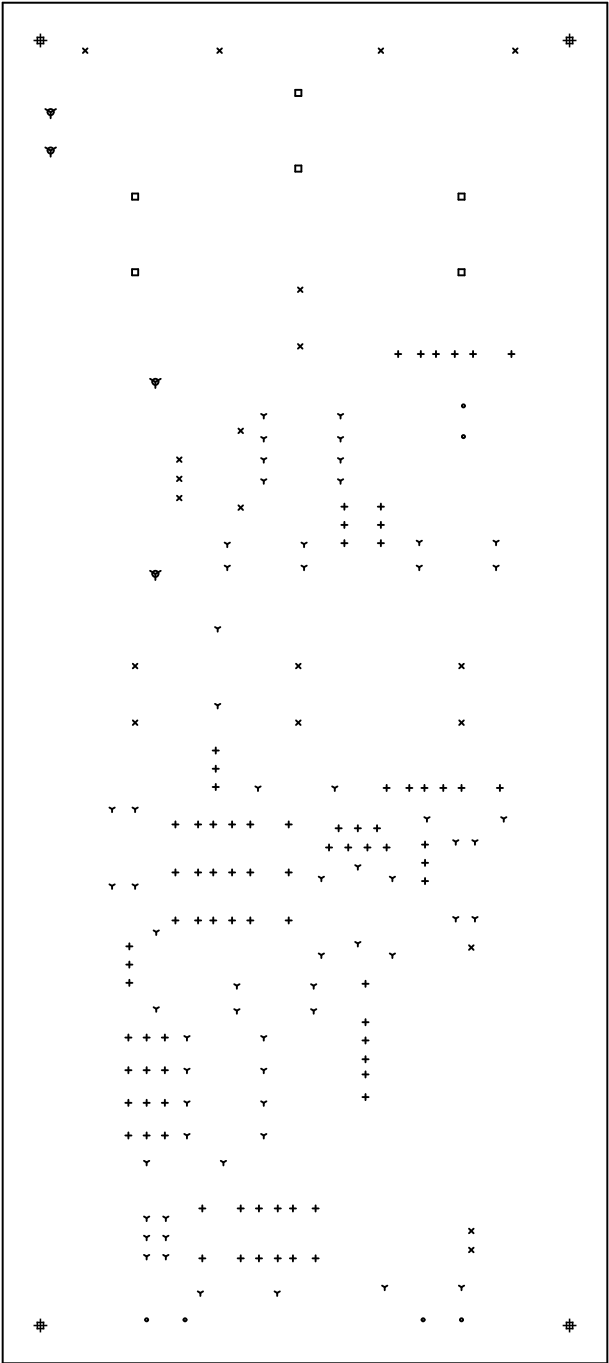
Symbol	Diam. (Inch)	Count	Plated?
Y	<u>0.020</u>	<u>62</u>	<u>YES</u>
+	<u>0.025</u>	<u>82</u>	<u>YES</u>
x	<u>0.030</u>	<u>20</u>	<u>YES</u>
•	<u>0.040</u>	<u>6</u>	<u>YES</u>
□	<u>0.050</u>	<u>6</u>	<u>YES</u>
▽	<u>0.060</u>	<u>4</u>	<u>YES</u>
#	<u>0.107</u>	<u>4</u>	<u>YES</u>

Title: (unknown) - Fabrication Drawing

Author: Christian Uller

Date: Mon Dec 18 16:30:29 2006 UTC

Maximum Dimensions: 3149 mils wide, 7086 mils high



Board outline is the centerline of this 10 mil rectangle - 0,0 to 3149,7086 mils