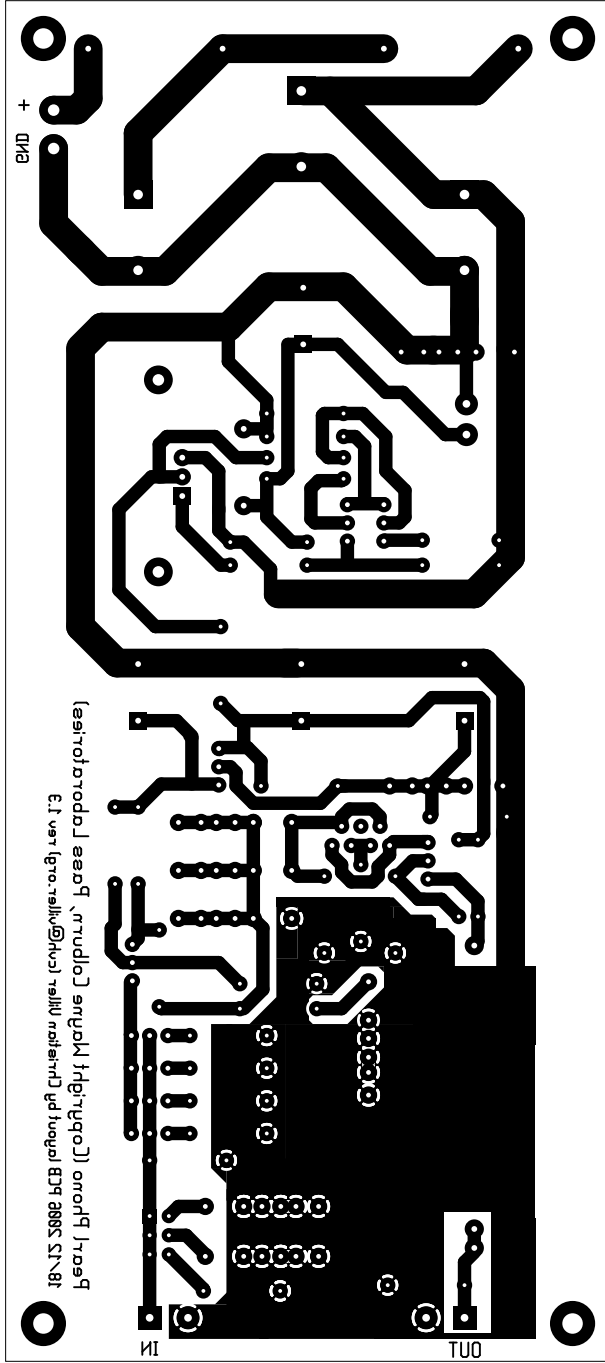
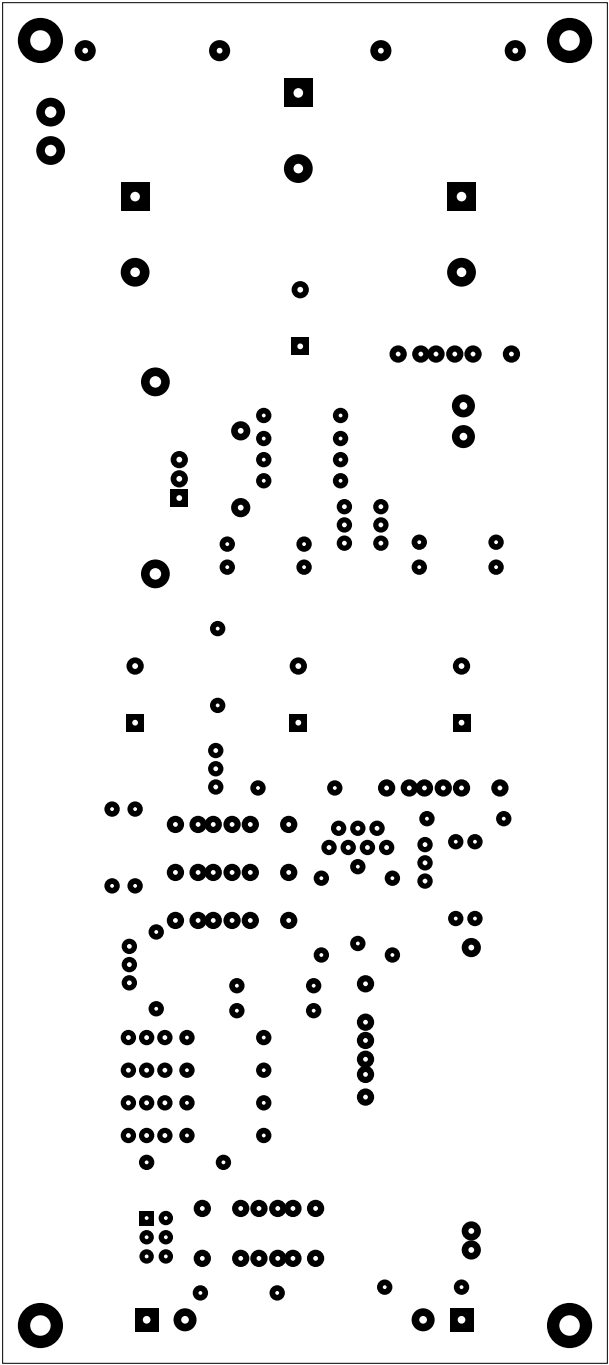


2. solder
3. component
4. componentmask
5. soldermask
6. plated-drill
7. topsilk
8. bottomsilk
9. topassembly
10. bottomassembly
11. fab

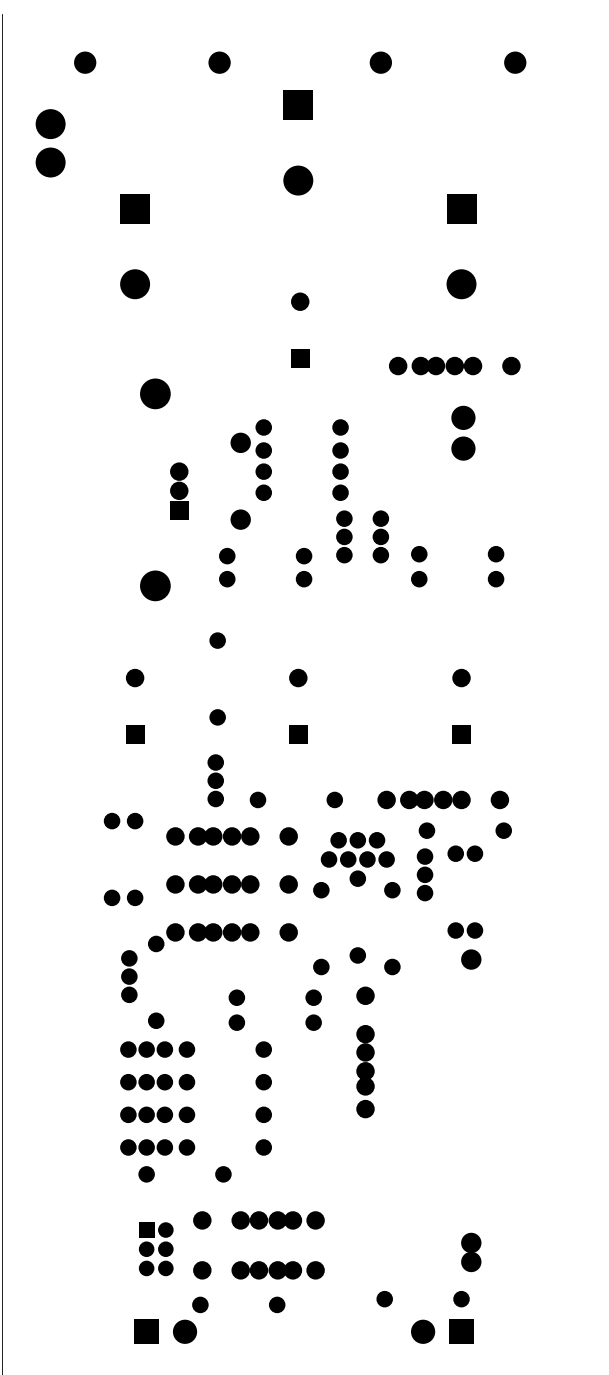
Layer solder



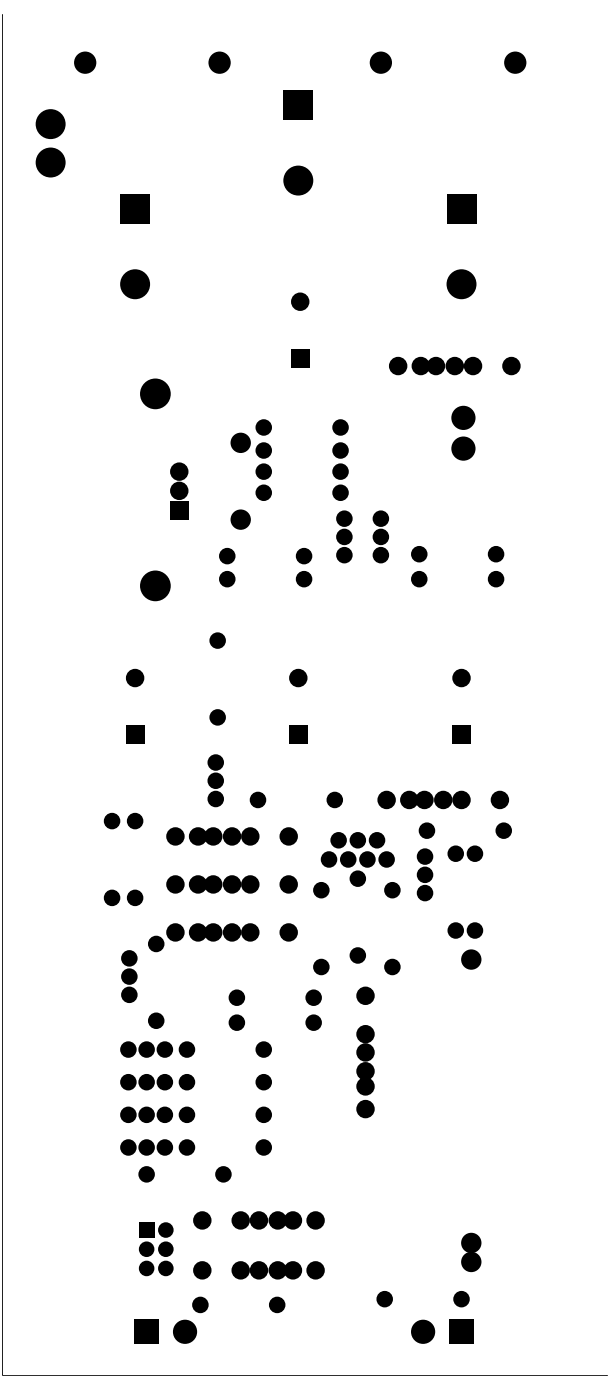
Layer component



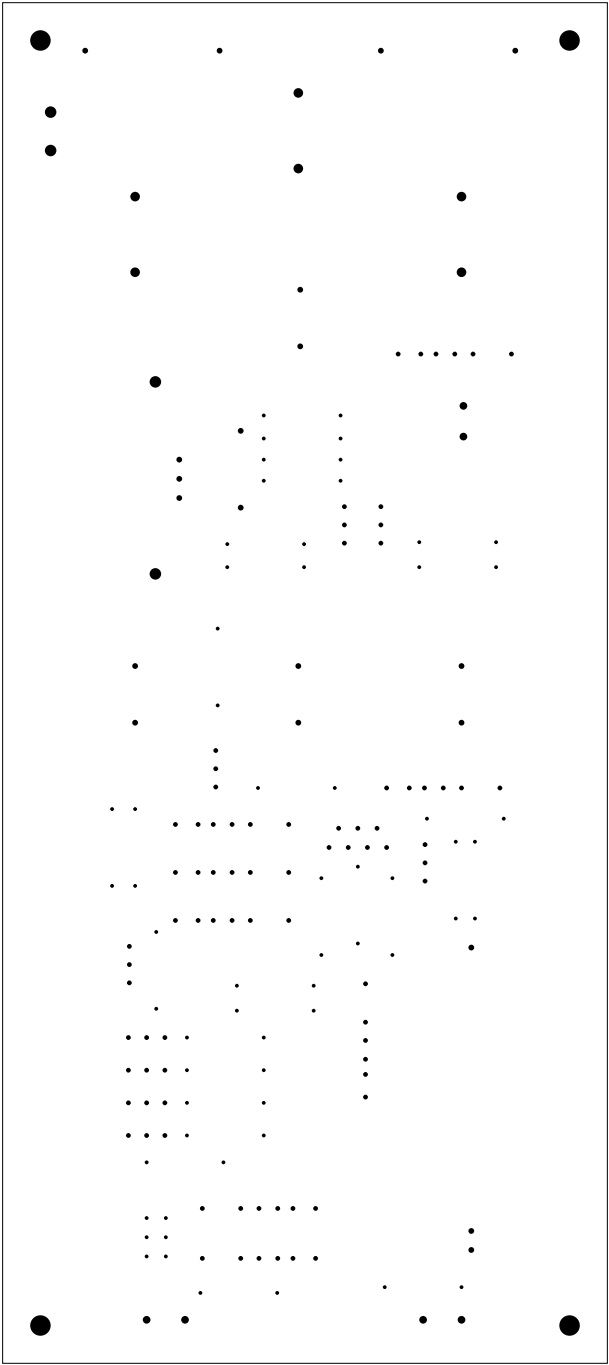
Layer componentmask



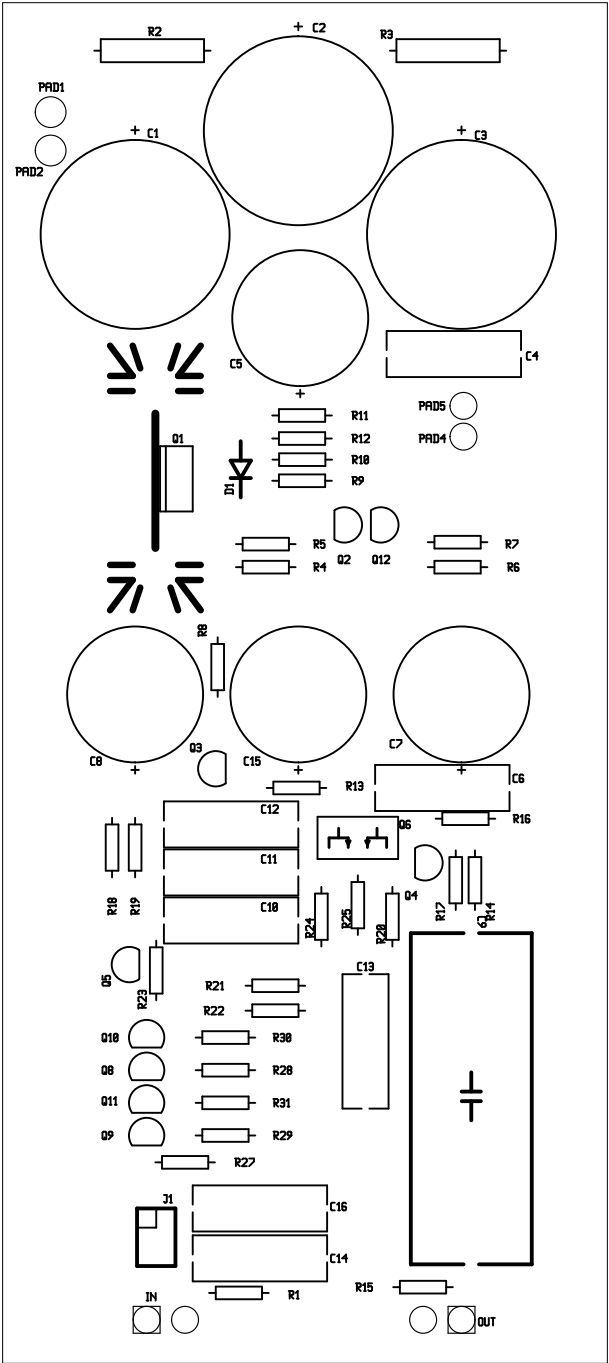
Layer soldermask



Layer plated-drill

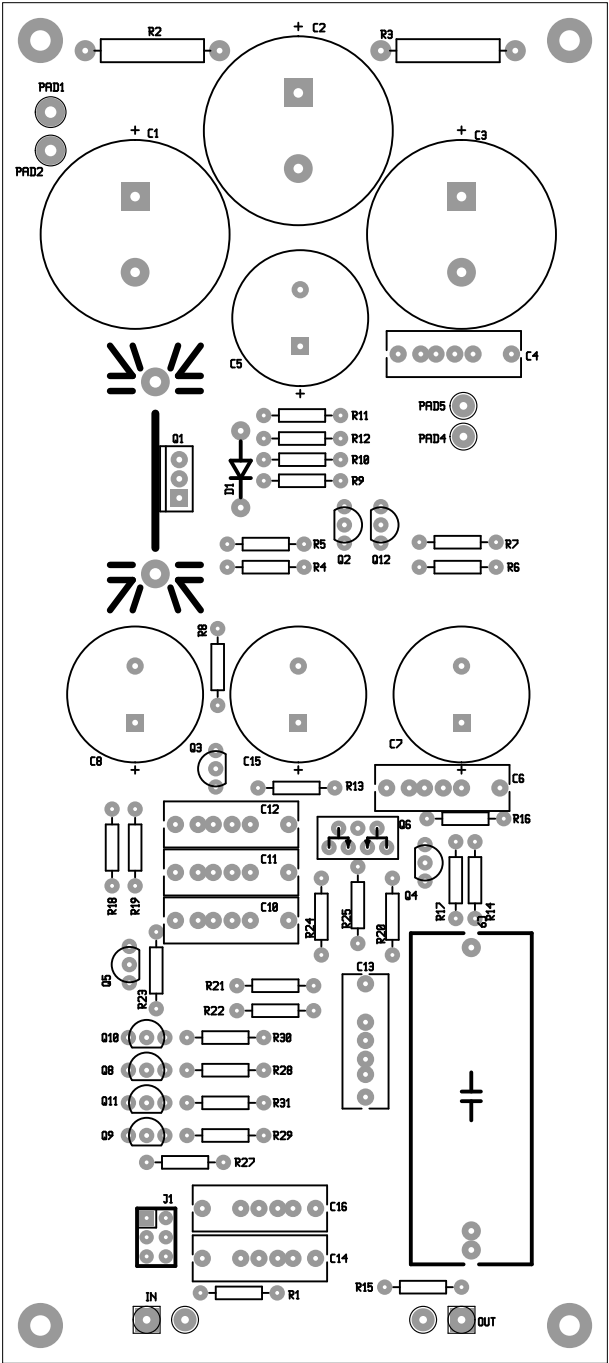


Layer topsilk

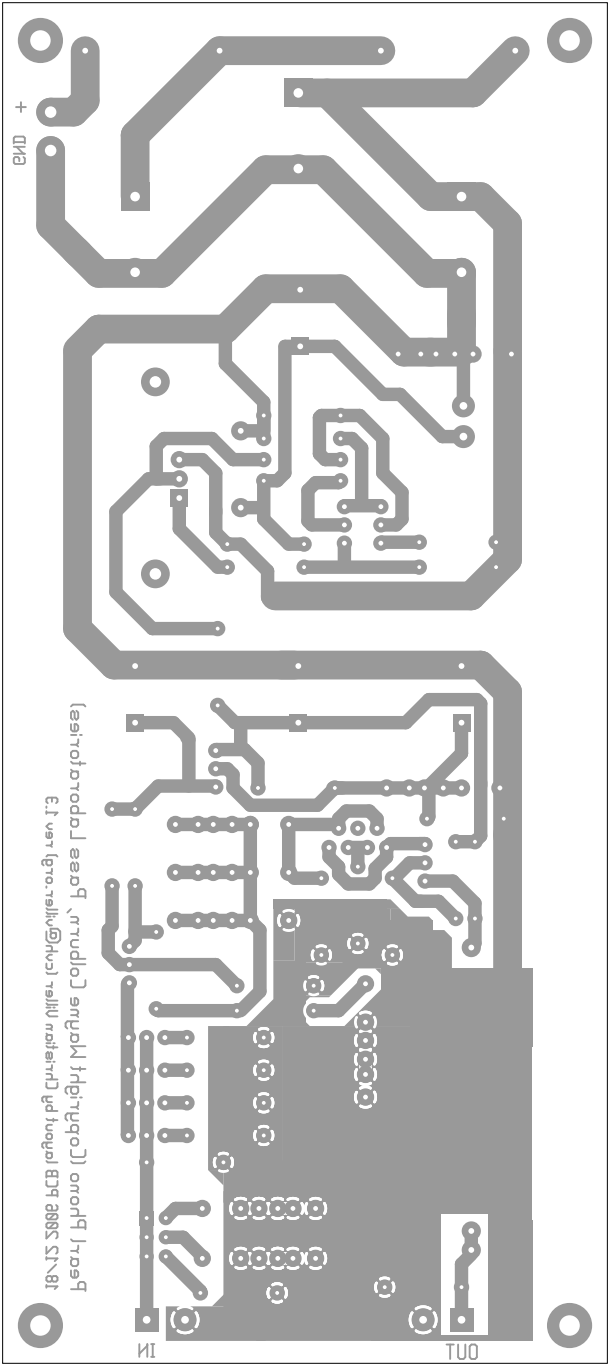


Layer bottomsilk

Layer topassembly



Layer bottomassembly



There are 7 different drill sizes used in this layout, 184 holes total

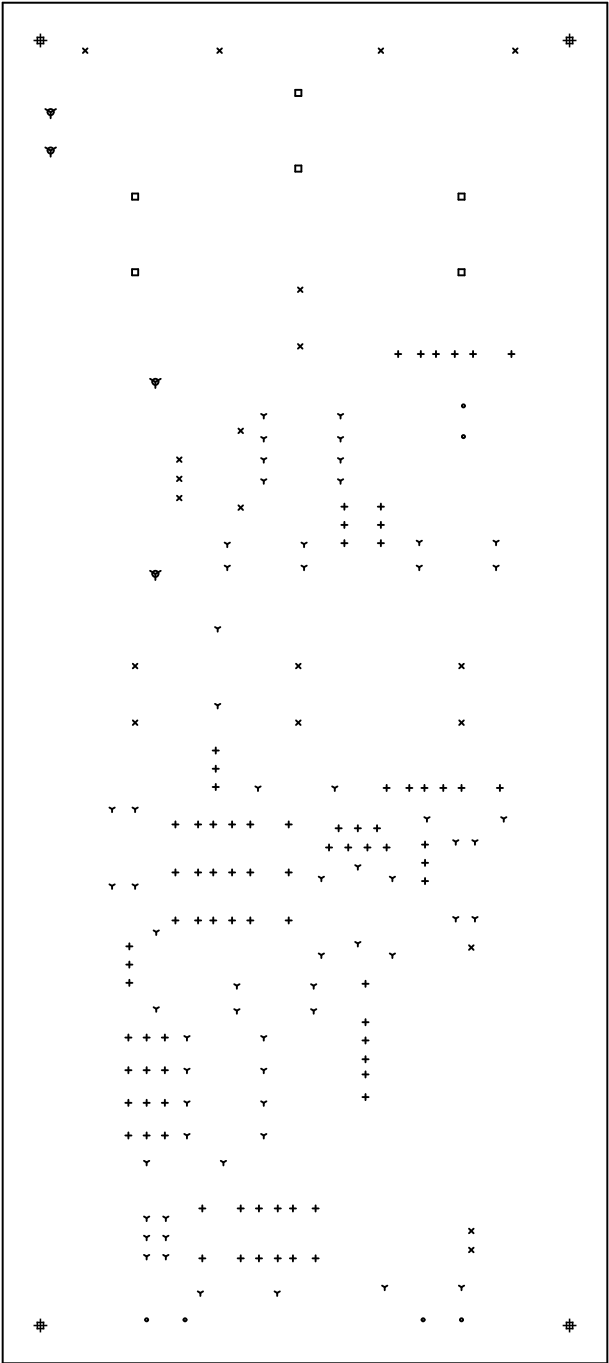
| Symbol | Diam. (Inch) | Count | Plated? |
|--------|--------------|-----------|------------|
| γ | <u>0.020</u> | <u>62</u> | <u>YES</u> |
| + | <u>0.025</u> | <u>82</u> | <u>YES</u> |
| x | <u>0.030</u> | <u>20</u> | <u>YES</u> |
| • | <u>0.040</u> | <u>6</u> | <u>YES</u> |
| □ | <u>0.050</u> | <u>6</u> | <u>YES</u> |
| ▽ | <u>0.060</u> | <u>4</u> | <u>YES</u> |
| ⊕ | <u>0.107</u> | <u>4</u> | <u>YES</u> |

Title: (unknown) - Fabrication Drawing

Author: Christian Uller

Date: Mon Dec 18 16:30:03 2006 UTC

Maximum Dimensions: 3149 mils wide, 7086 mils high



Board outline is the centerline of this 10 mil rectangle - 0,0 to 3149,7086 mils