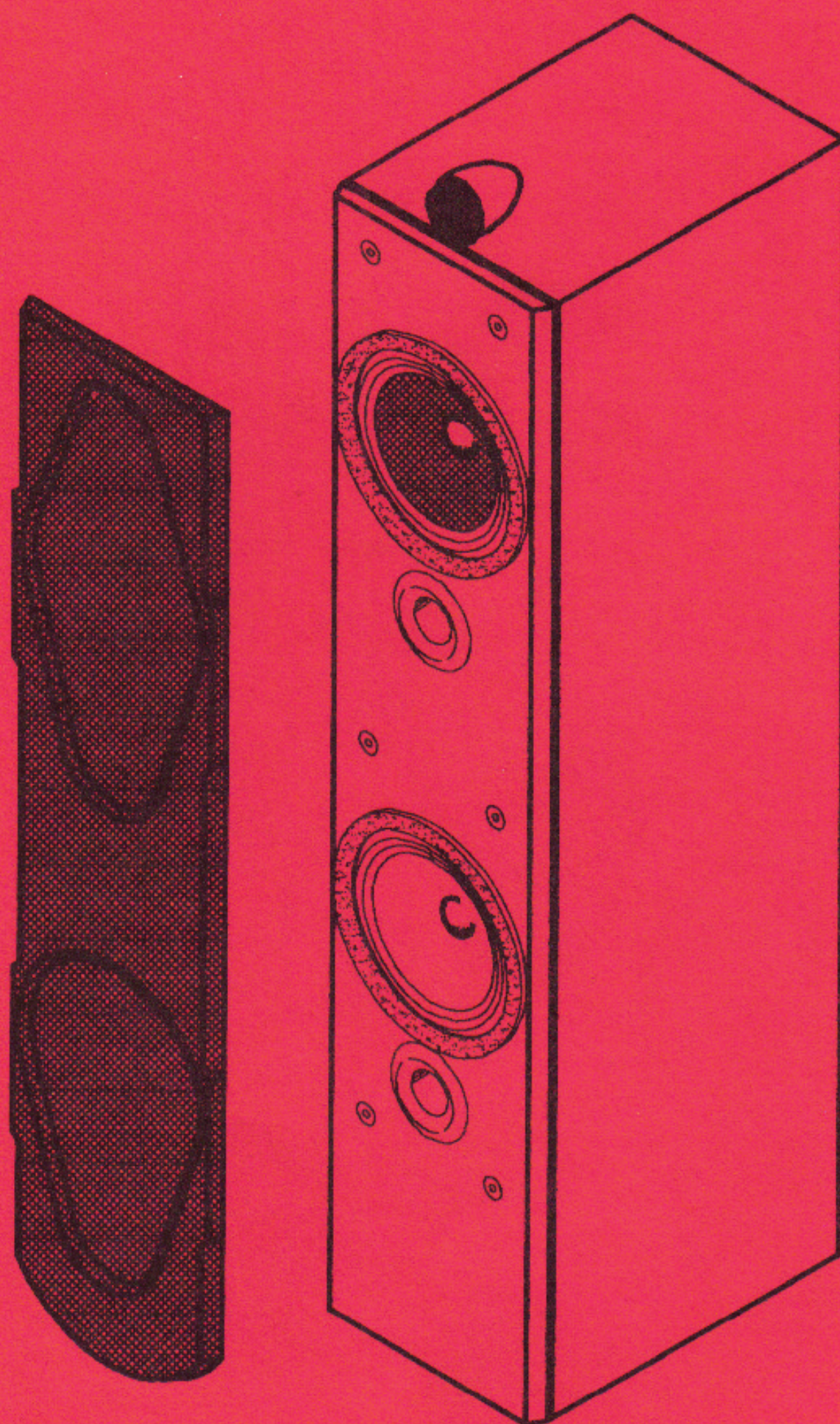


B&W



P6

B&W

TITLE

GENERAL ASSEMBLY

DRG NO.

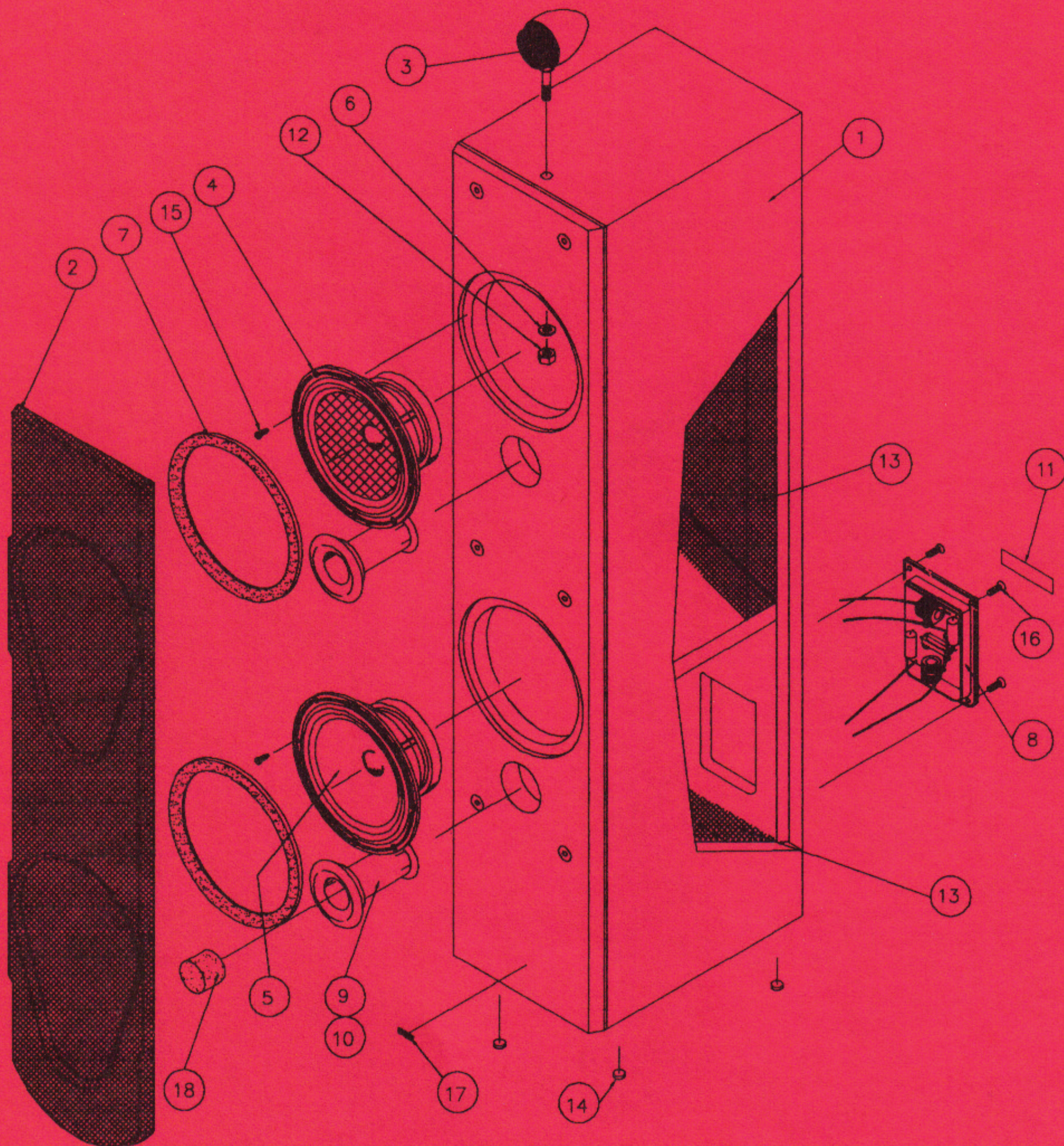
ISSUE

DATE 23:6:92

© 1992

DRAWN DS

A2696-12 (4)





TITLE

GENERAL ASSEMBLY PARTS LIST

DRG NO.

ISSUE

DATE 23:6:92

© 1992

DRAWN DS

A2696-22 (4)

ITEM	QTY	Code No	DESCRIPTION	Drg No
		P6-B	Complete ass'y Black ash	A2696-12
1	1	Y7269	Cabinet ass'y Black ash	A2587
2	1	ZZ3271	Grille ass'y Black	A2735
3	1	ZZ10030	Tweeter unit ass'y (SEE NOTE)	
4	1	ZZ3328	Bass Unit KEVLAR	B2726
5	1	ZZ9776	Bass Unit Cobex	B1854C
6	1	H9660	M8 Star Washer	
7	2	R4189	Trim ring	B1733
8	1	ZZ3289/A	X-Over ass'y (SEE NOTE)	A2733
9	2	P7757	Port trim (Glue with item 10)	B1891
10	2	P7749/100	Port tube	A1929
11	1	S2526	Serial No. Label	
12	1	H9071	M8 Full nut	
13	1		Foam (cabinet ass'y)	A2588
14	4	F0981	Feet rubber	
15	8	H0019	Scr 3.5c/bd x 20lg pan pozi	
16	4	H9490	Scr 3.5mm x 20 csk pozi	
17	1	B0868	B&W Logo	A2478
18	2	F1023	Foam Plug (Optional)	

NOTE:

FROM SERIAL NUMBER 002111 A PLASTIC TWEETER IS USED
BEFORE SERIAL NUMBER 002111 A METAL TWEETER WAS USED
THIS MEANT THAT A DIFFERENT CROSSOVER WAS ALSO NEEDED

ZZ10030 = NEW PLASTIC TWEETER

ZZ3319 = OLD METAL TWEETER

ZZ3289/A = CROSSOVER FOR PLASTIC TWEETER

ZZ3289 = CROSSOVER FOR METAL TWEETER



TITLE

HF GA METAL TYPE

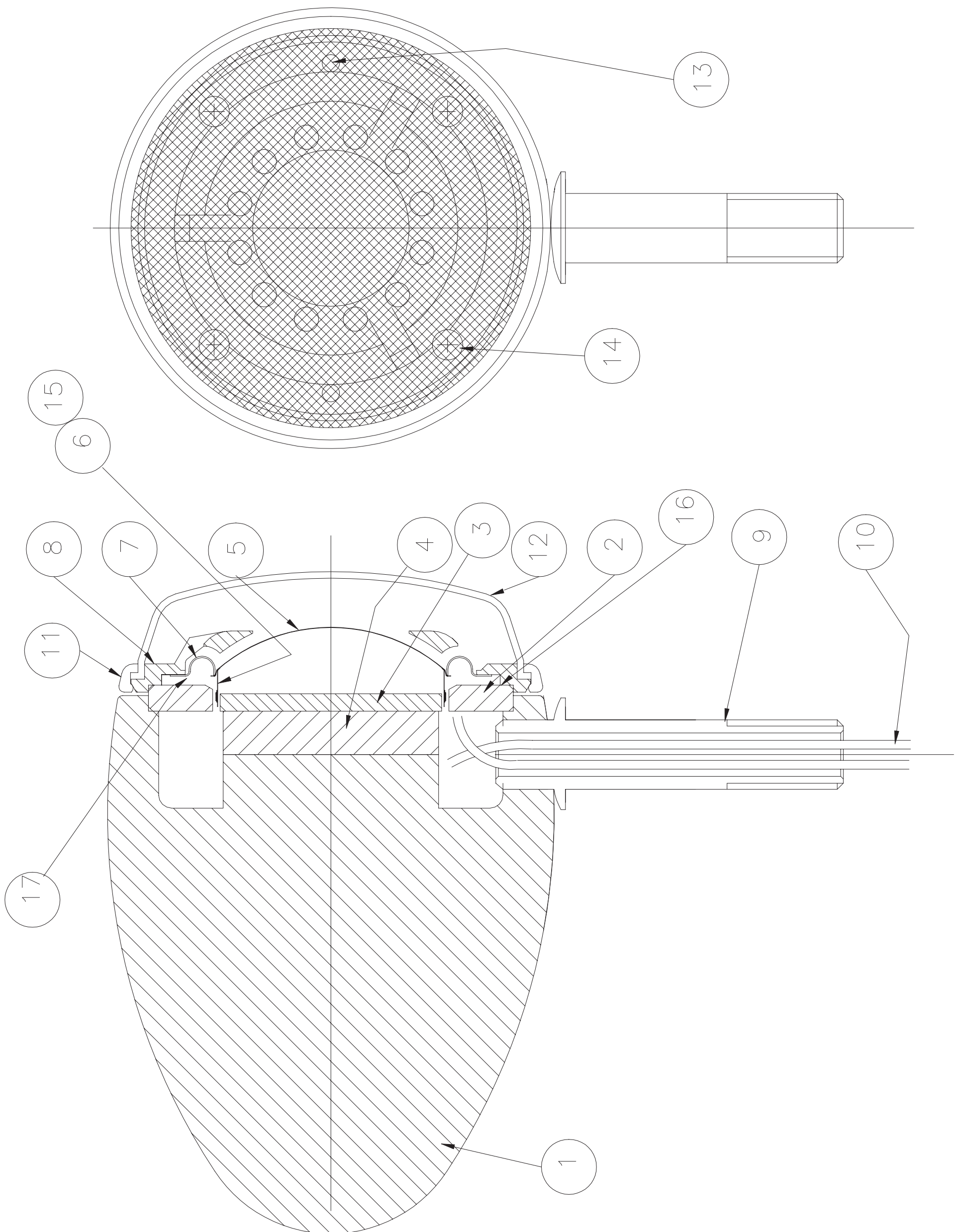
COPYRIGHT © 1994 | DATE 01/02/94 | DRAWN DS

DRG. NO.

A 2687-1 -4

ISS

3





TITLE

HF ASSY METAL PARTS LIST

COPYRIGHT © 1994

DATE 01/02/94

DRAWN DS

DRG. NO.

A 2687-2 -4

ISS

3

Item	QTY	Code No	DESCRIPTION	REMARKS	Drg No
		ZZ03319	COMPLETE ASSEMBLY		A2687
		ZC03319	DIAPHRAGM ASSEMBLY		
1	1	CC08843	Tweeter cup		A2686
2	1	PP00922	Top plate		A2157
3	1	PP01058	Pole piece		A2382
4	1	MM00337	Magnet		A2381
5	1	DD01139	Dome (matal) Black		A1293
6	1	ZV00337	Coil ass'y		ZV0337
7	1	SS01219	Surround		A1292
8	1	RR03212	Tweeter mounting ring		B1318
9	1	PP01260	Tweeter stud		A2664
10	1	ZX00884	Harness ass'y		
11	1	ZG00396	Grille moulding		A549
12	1		Grille mesh		A550
13	2	PP02208	Pin terminal RS 433-854		
14	4	HH01228	Screw M2x5 pan hd pozi		
15	A/R	AA05320	Ferrofluid		
16	1	GG00418	Gasket		
17	2	SS03328	Sleeving		



TITLE

HF GA PLASTIC TYPE

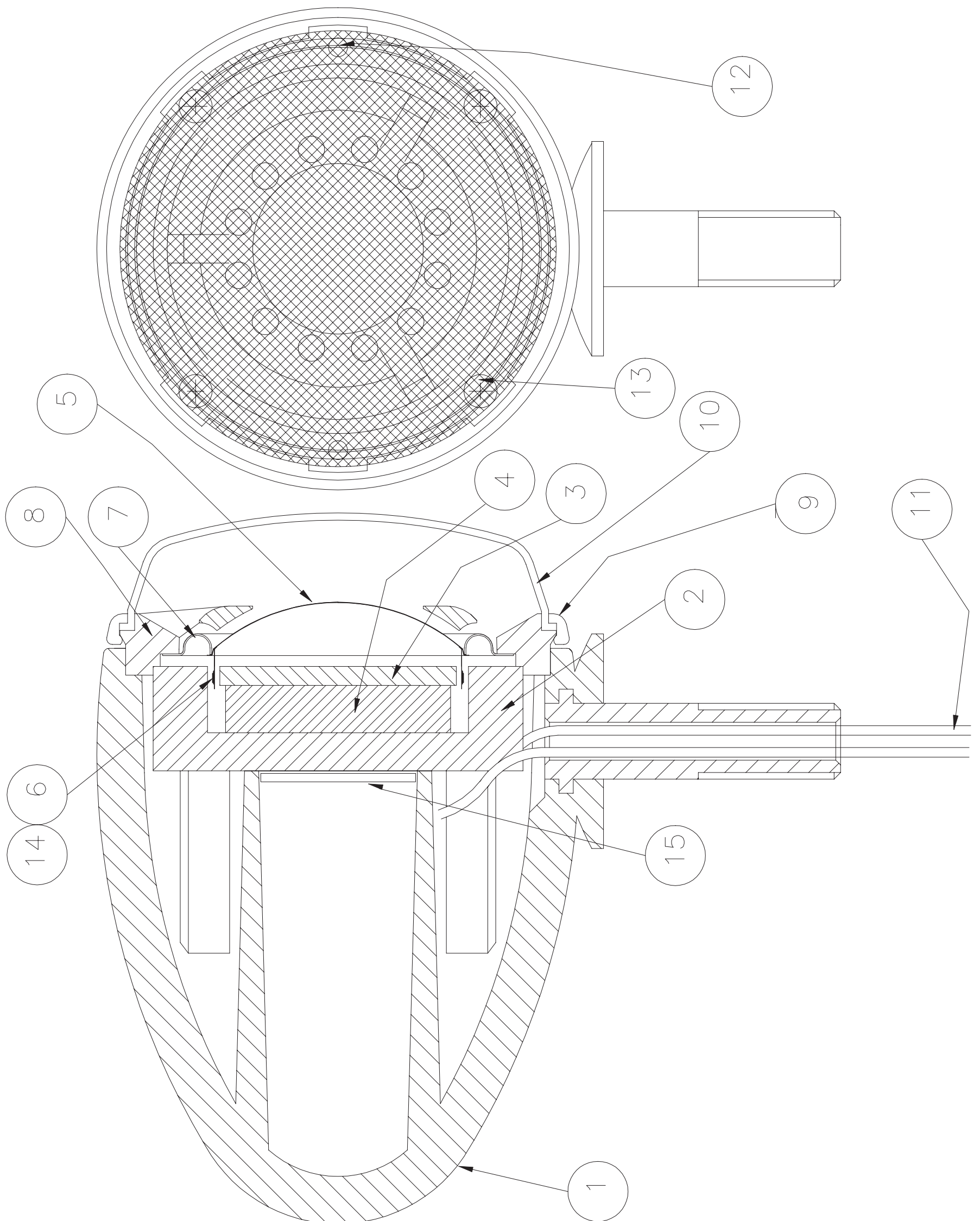
COPYRIGHT © 1994 | DATE 01/02/94 | DRAWN DS


DRG. NO.

A 2687-3 -4

ISS

3



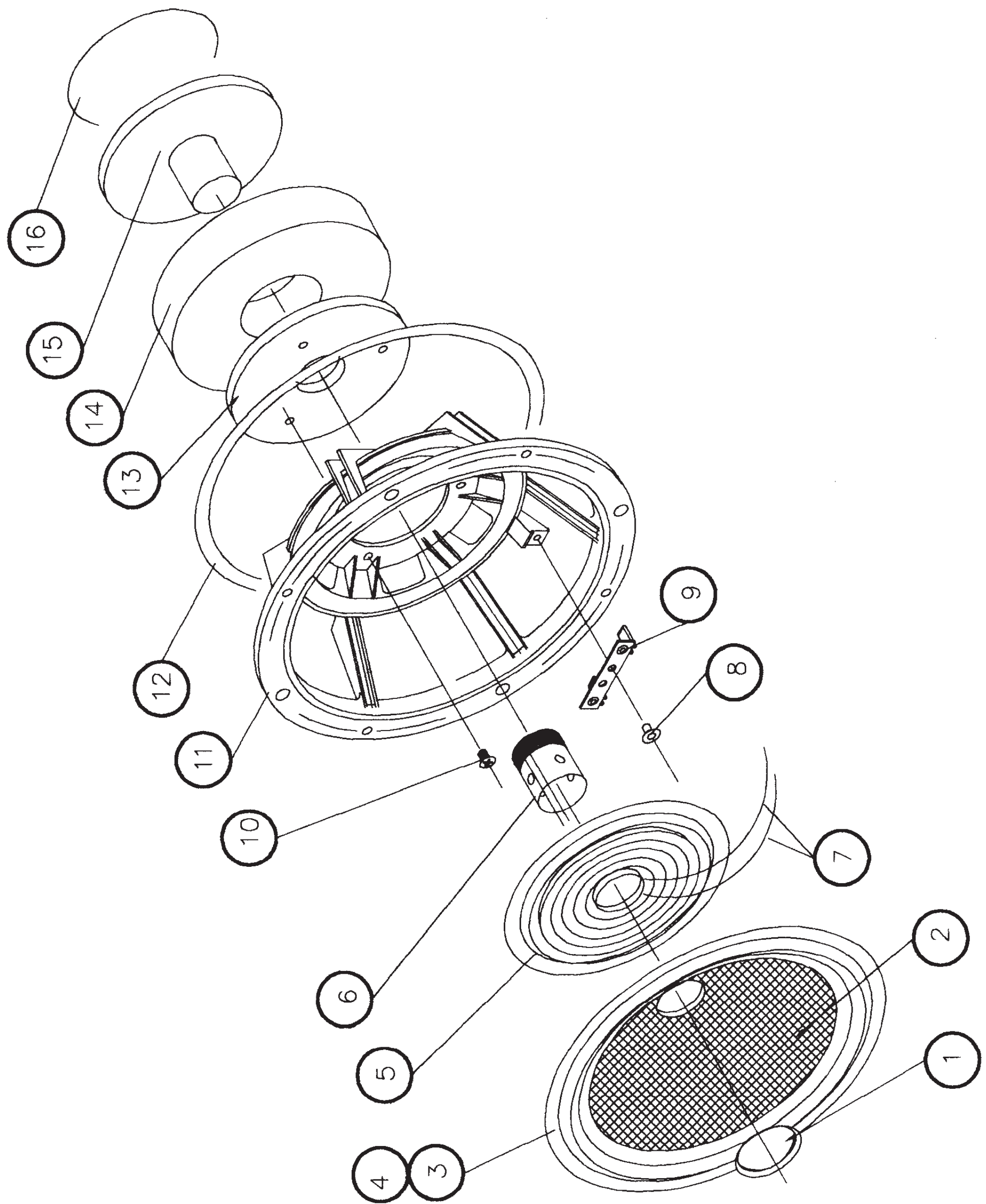
	TITLE			DRG. NO.		ISS
	HF GA PLASTIC P/LIST			A 2687-4 -4		3
COPYRIGHT © 1994		DATE 01/02/94	DRAWN DS			

Item	QTY	Code No	DESCRIPTION	REMARKS	Drg No
		ZZ10030	COMPLETE ASSEMBLY		A2687-34
1	1	CC08893	Tweeter moulding		A2755
2	1	CS00069	Tweeter cup		A2180
3	1	PP01058	Pole piece		A2382
4	1	MM00337	Magnet		A2381
5	1	DD01139	Dome (matal) Black		A1293
6	1	ZV00337	Coil ass'y		
7	1	SS01219	Surround		A1292
8	1	DD00922	Tweeter mounting ring		A2756
9	1	ZG00396	Grille moulding	R3009	A549
10	1		Grille mesh	G1007	A550
11	1	ZX00884	Harness ass'y		A2736
12	2	PP02211	Pin terminal RS 433-854		
13	4	HH01945	Screw 2.2x6 csk plastech		
14	A/R	AA05320	Ferrofluid		
15	1	SS06378	Suede Disk		



TITLE
KEVLAR BASS UNIT G.A.
DATE 2:3:93 © 1993 DRAWN DS

DRG NO. ISSUE
A2726-12 ①





TITLE

KEVLAR BASS UNIT PARTS LIST

DRG NO.

ISSUE

DATE 2:3:93

© 1993

DRAWN DS

A2726-22 (1)

Item	QTY	Code No	DESCRIPTION	REMARKS	Drg No
		ZZ3328	COMPLETE ASS'Y		B2726
		ZC3328	Cone to coil ass'y		
1	1	D0205	Dust cap		A1915
2	1	ZS3328	Cone	ZM0132	
3	1		Surround	S1295	A1804
4	1		Card ring	R4251	A1893
5	1	S0728	Rear suspension		A1724
6	1	ZV0620	Coil ass'y		
7	2	T1767	Tinsel		
8	1	R3972	Pop rivet		
9	1	T0892	Tag panel		
10	3	H1928	Screw csk hd pozi M4x8lg		
11	1	C5657	Chassis		C1444
12	1	G0396	Gasket		A1448
13	1	P0876	Front plate		A1770
14	1	M0183	Magnet ceramic		A1514
15	1	P0973	Back plate/pole piece		A1771
16	1	L7519	Label		A2728



TITLE

COBEX BASS UNIT G.A.

DRG NO.

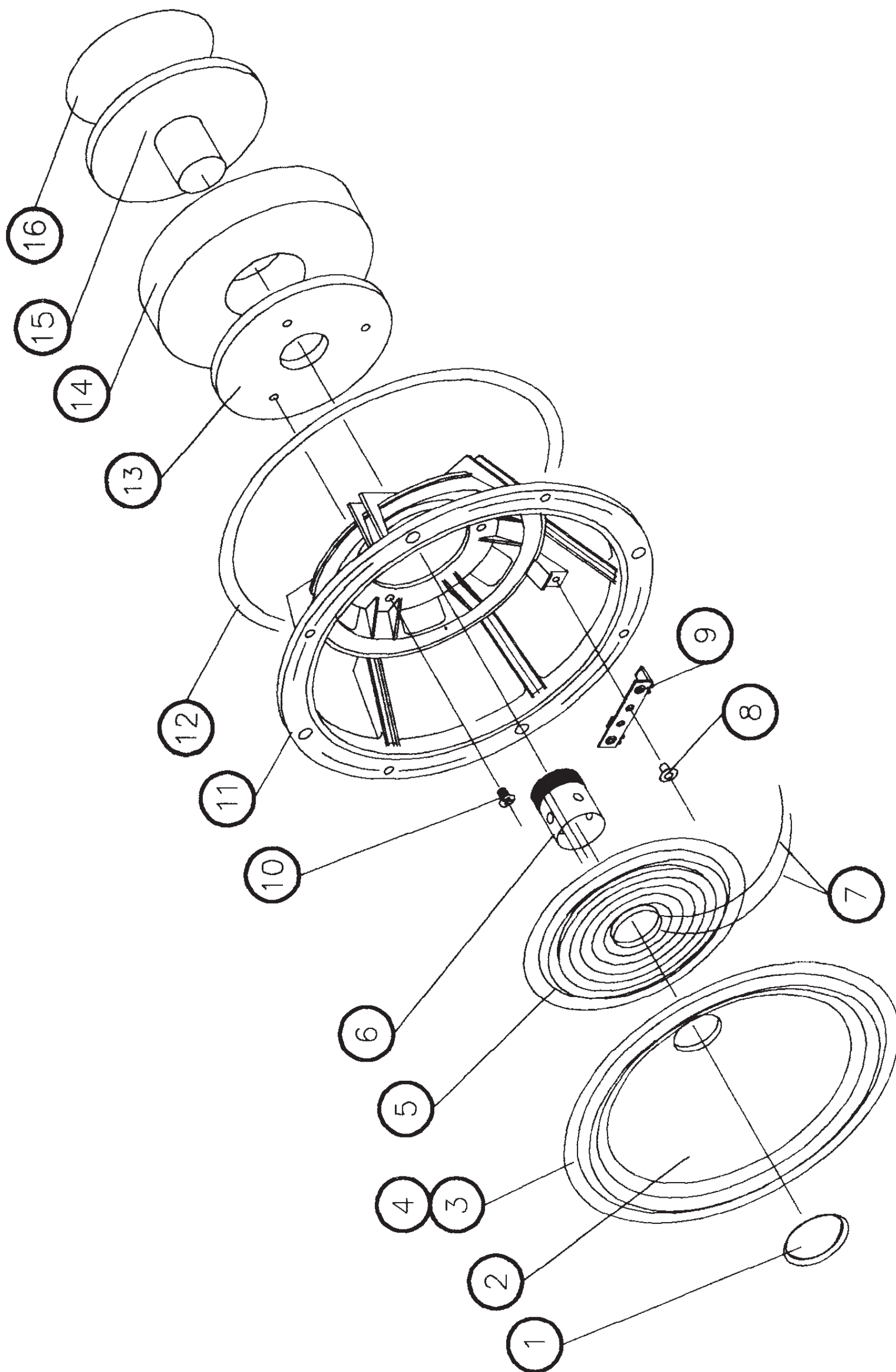
ISSUE

DATE 2:6:92

© 1992

DRAWN DS

A1854-14 (5)





TITLE

COBEX BASS UNIT PARTS LIST

DRG NO.

ISSUE

DATE 2:6:92

© 1992

DRAWN DS

A1854-24 (5)

ITEM	QTY	Code No	DESCRIPTION	REMARKS	Drg No
		ZZ9776	Complete assembly		A1854-14
1	1	D0205	Dust cap		A1915
2	1		Cone	C7960	A1881
3	1	ZS8613	Surround	S1295	A1804
4	1		Card ring	R4286	A1893
5	1	S0728	Rear suspension		A1724
6	1	ZV0663	Coil ass'y		ZV0663
7	2	T1767	Tinsel		
8	1	R3972	Pop rivet		
9	1	T0892	Tag panel		
10	3	H1928	Screw csk hd pozi M4x8lg		
11	1	C5657	Chassis		C1444
12	1	G0396	Gasket		A1448
13	1	P0876	Front plate		A1770
14	1	M0183	Magnet ceramic		A1514
15	1	P0973	Back plate/pole piece		A1771
16	1	L2011	Label		

B&W

TITLE

**CROSSOVER GENERAL ASSEMBLY
FOR METAL TWEETER**

DRG NO.

ISSUE

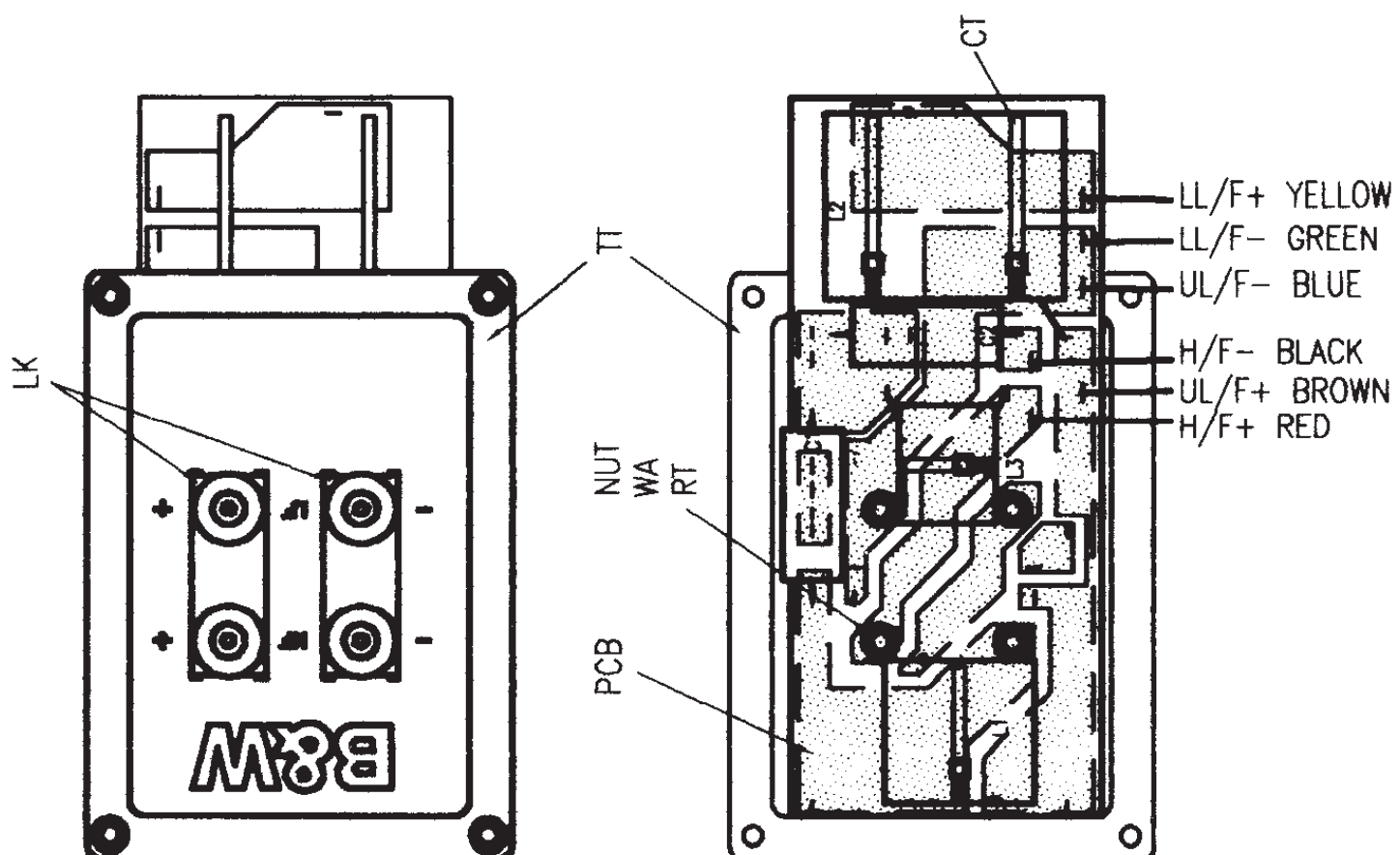
A2733-12 **1**

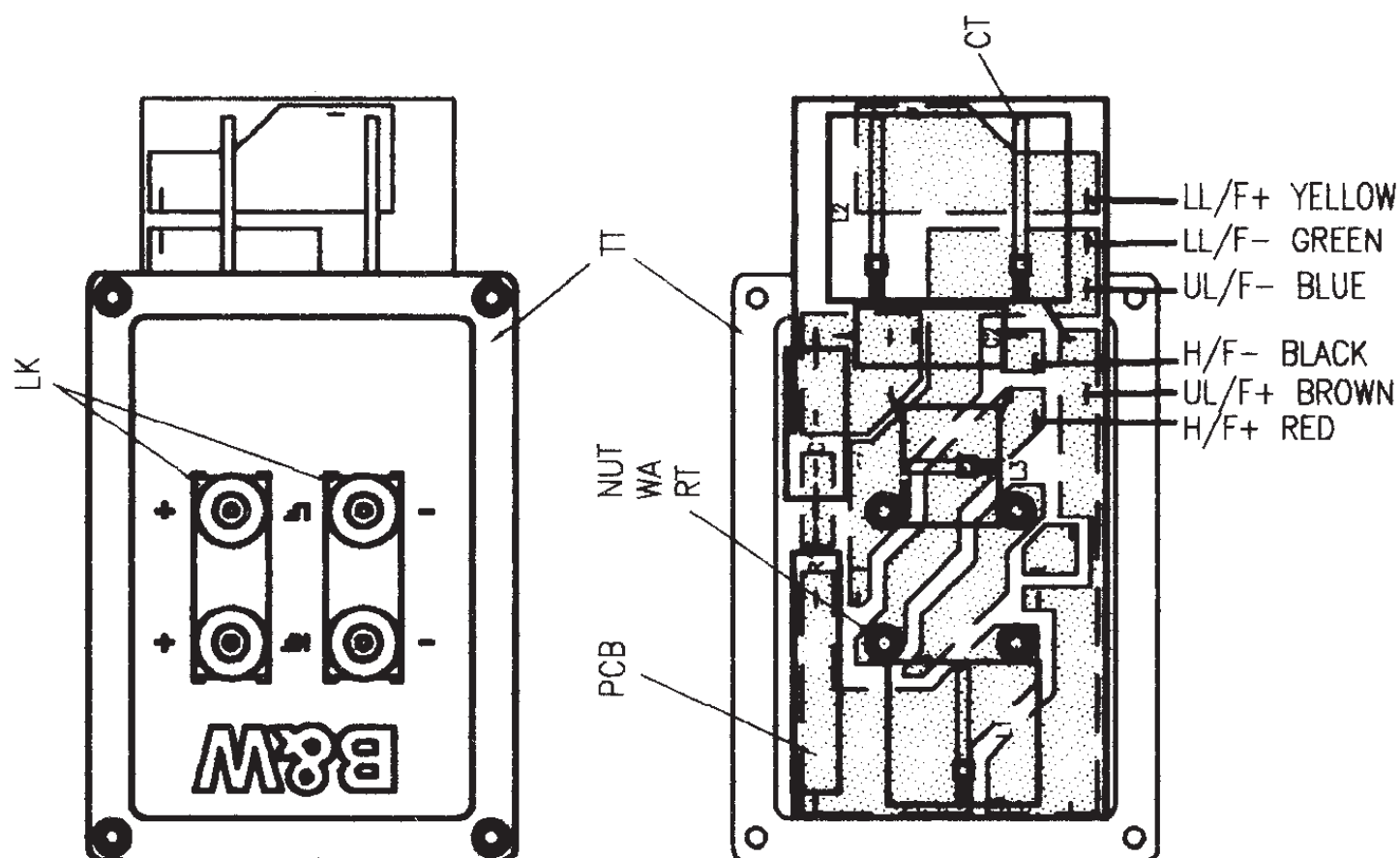
DATE

© 1994

DRAWN PLB

ITEM	CODE NO	COMPONENT	VALUE	REMARKS
	ZZ3289	COMPLETE ASSEMBLY		DRG NO A2733
C1	C1049	CAPACITOR	6uF	70V ELECTROLYTIC
C2	C1066	CAPACITOR	10uF	70V ELECTROLYTIC
L1	ZL1449	INDUCTOR	0.9mH	WICON 1mm WIRE
L2	ZL1236	INDUCTOR	5mH	WICON 1mm WIRE
L3	ZL0671	INDUCTOR	0.15mH	0.45mm WIRE
TT	ZT0329	Term/tray assy		
HAR	ZX0825	Harness assy		DRG NO A2732
CT	C6513	CABLE TIE		4 OFF
NUT	H4030	NUT		4 OFF M4 FULL NUT
WA	H5096	WASHER		4 OFF M4 SHAKE PROOF
LK	T2208	GOLD PLATED LINK		2 OFF DRG NO A2198 (REF TERM TRAY ASSY)
PCB	C4979	P.C.B.		PRINTED CIRCUIT BOARD DRG NO A2690
RT	T0736	EYELET		TUCKER 4.2 I/D X 4 OFF







TITLE

HARNESS ASSEMBLY P6

COPYRIGHT © 1994

DATE 04/03/94

DRAWN KW

DRG. NO.

A 2732-1 -1

ISS

4

