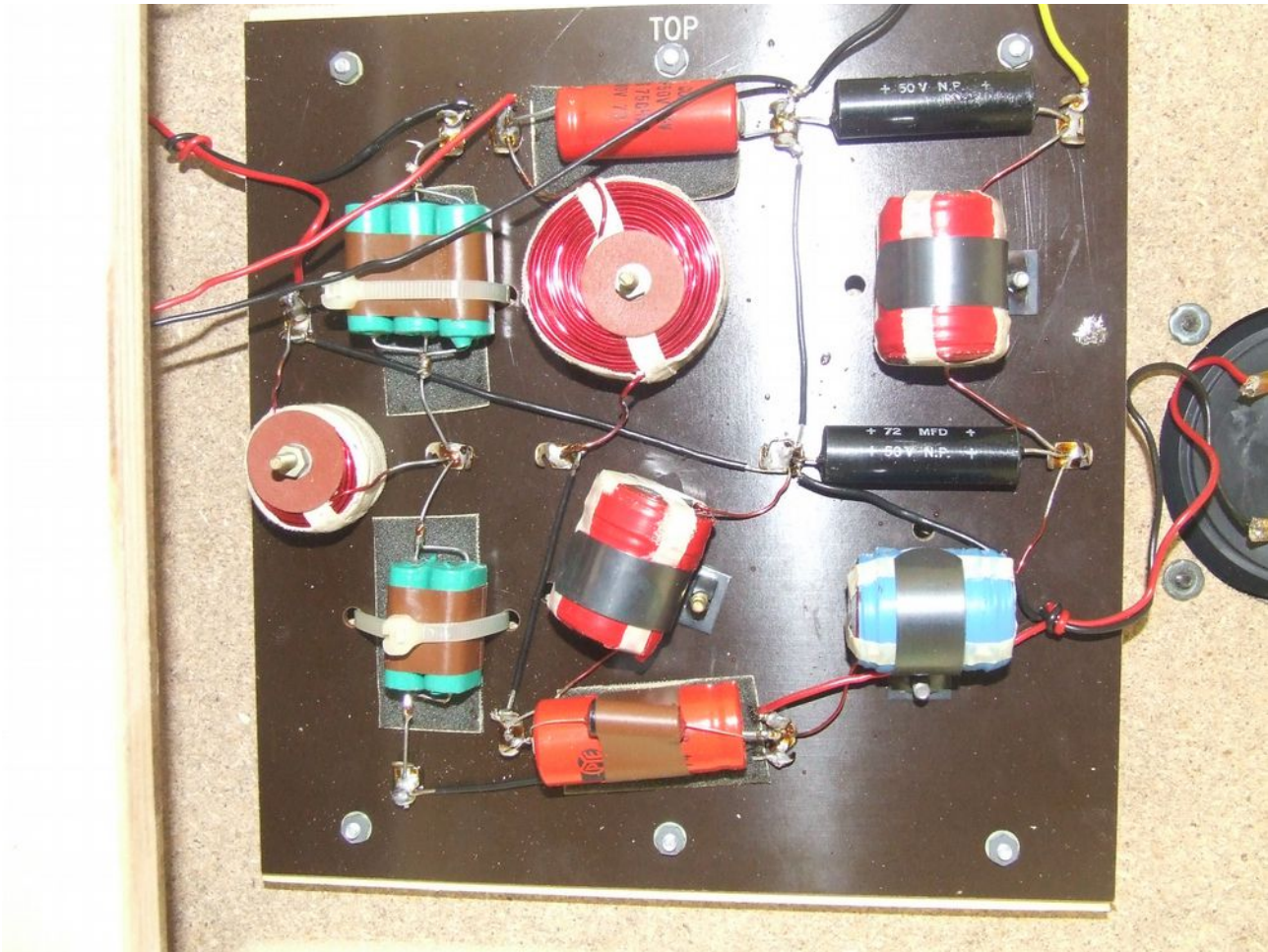


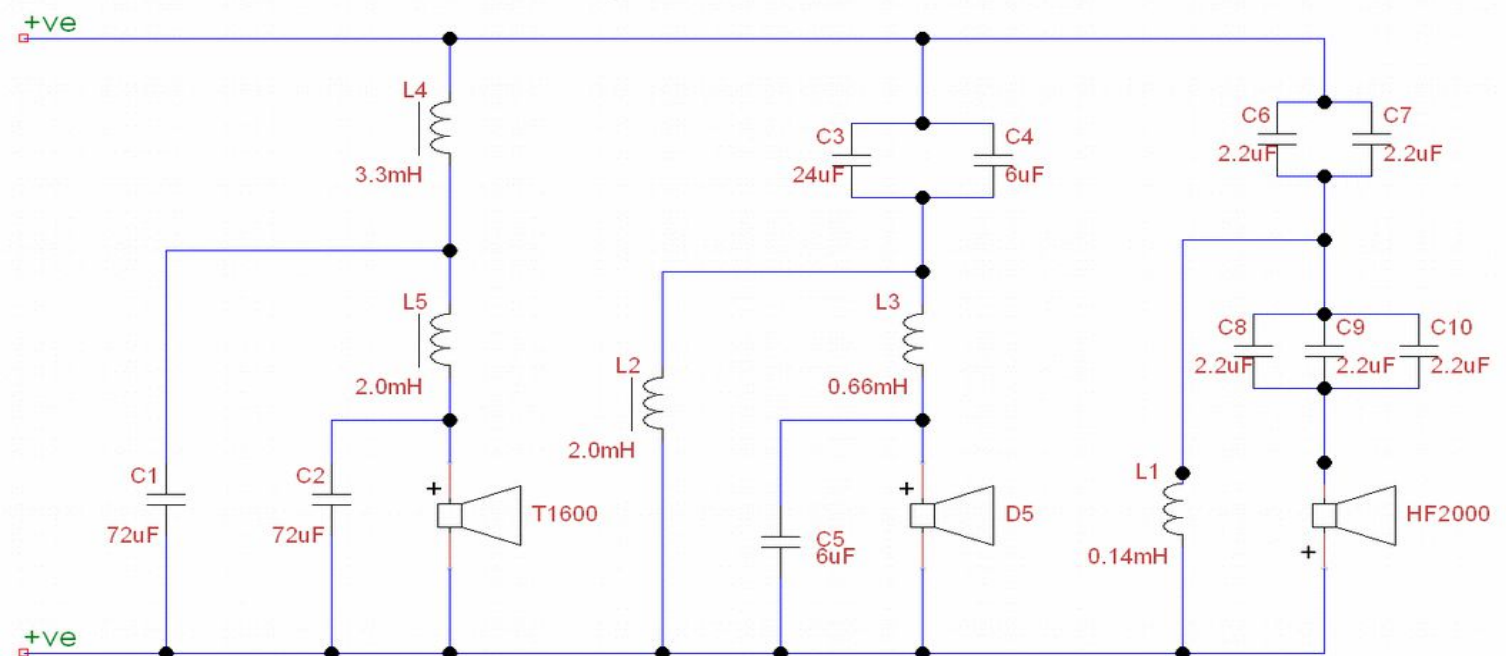
Ditton 44 – Speaker 2



Ditton 44 – Speaker 2 Crossover



## Speaker 2



## Parts List

Reference	Value	Description	Measured Value
C1	72uF	Elcap Elec non-polar, 50V	87uF
C2	72uF	Elcap Elec non-polar, 50V	94uF
C3	24uF	Pye Elec non-polar, 25V	
C4	6uF	Elcap Elec non-polar, 50V	39uF (C3  C4)
C5	6uF	CCL Elec non-polar, 50V	7.2uF
C6	2.2uF	ERIE metallised film, 250V	
C7	2.2uF	ERIE metallised film, 250V	4.6uF (C6  C7)
C8	2.2uF	ERIE metallised film, 250V	
C9	2.2uF	ERIE metallised film, 250V	6.6uF (C9  C10  C11)
C10	2.2uF	ERIE metallised film, 250V	

Note: All ELCAP's have "black" ends

Note: All ERIE's are green sleeved oblong with rounded sides, M312

L1, L2, L3, L4, L5                      Standard Celestion inductors

T1600                      4.0ohm DCR

D5                      4.6ohm DCR

HF2000                      3.8ohm DCR