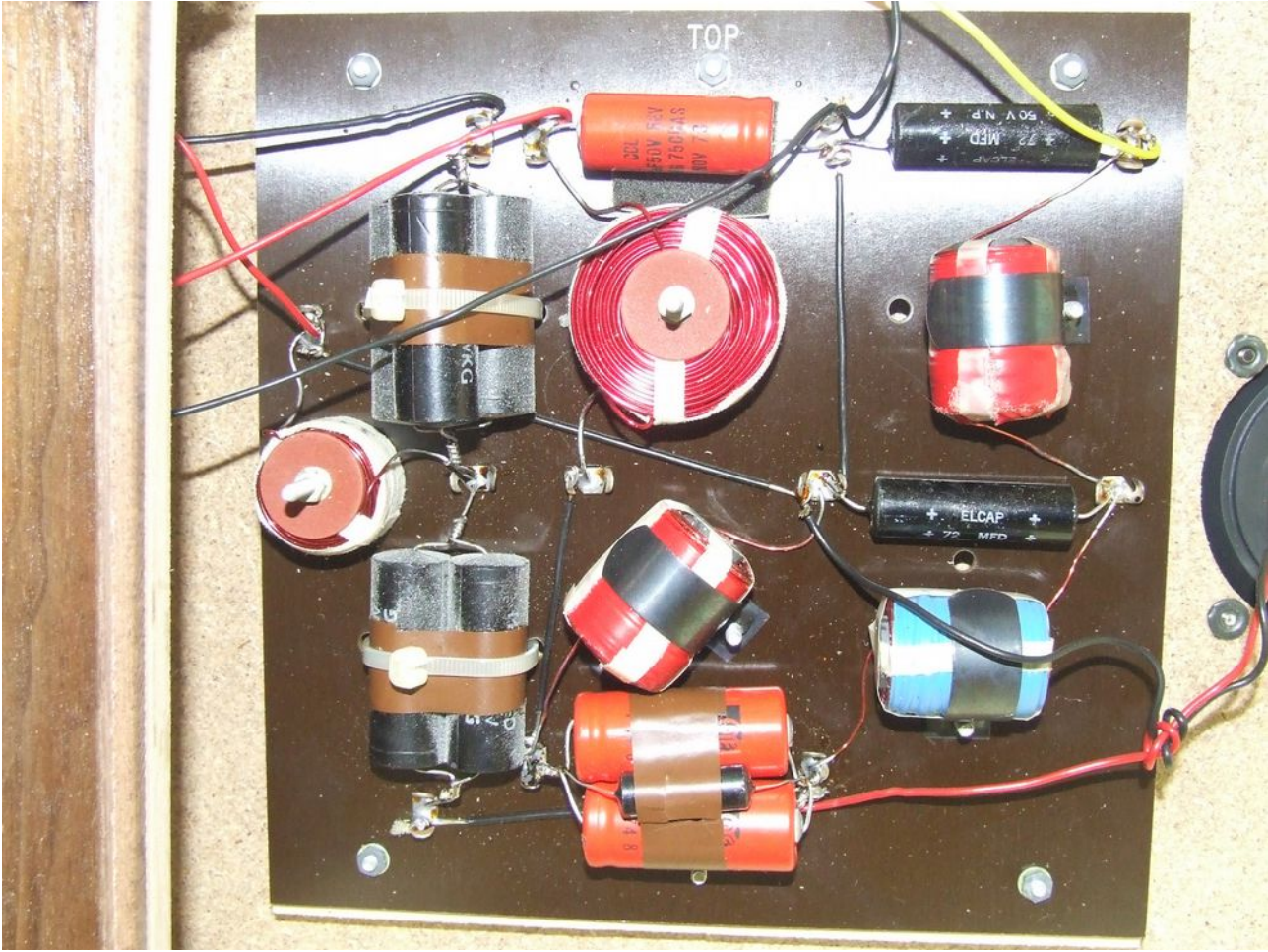
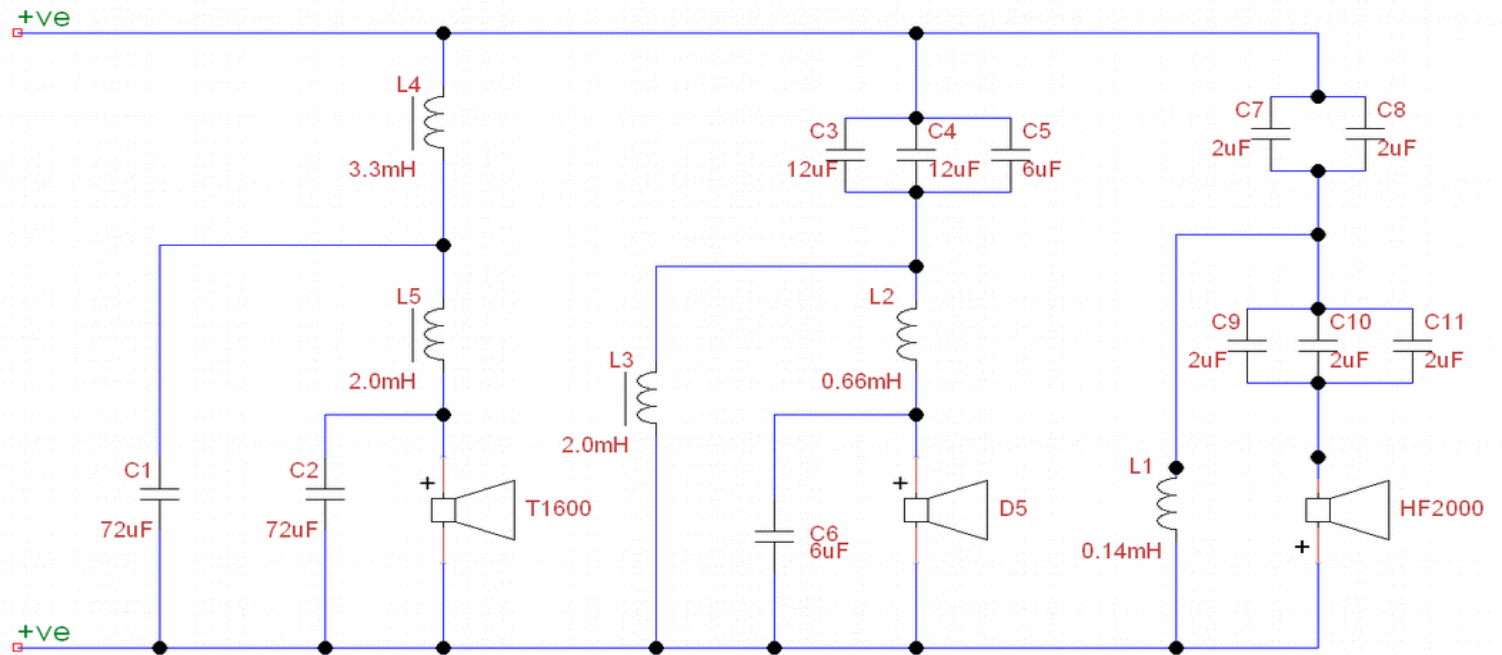


Ditton 44 – Speaker 1





Speaker 1



Parts List

Reference	Value	Description	Measured Value
C1	72uF	Elcap Elec non-polar, 50V	97uF
C2	72uF	Elcap Elec non-polar, 50V	85uF
C3	12uF	Pye Elec non-polar, 50V	
C4	12uF	Pye Elec non-polar, 50V	40uF (C3 C4 C5)
C5	6uF	Elcap Elec non-polar, 50V	
C6	6uF	CCL Elec non-polar, 50V	7.1uF
C7	2uF	ERIE metallised film, 150V	
C8	2uF	ERIE metallised film, 150V	12.3uF (C7 C8)
C9	2uF	ERIE metallised film, 150V	
C10	2uF	ERIE metallised film, 150V	16.7uF (C9 C10 C11)
C11	2uF	ERIE metallised film, 150V	

Note: All ELCAP's have "black" ends

Note: All ERIE's are black cylindrical, A304

L1, L2, L3, L4, L5 Standard Celestion inductors

T1600 4.6ohm DCR

D5 4.5ohm DCR

HF2000 3.4ohm DCR