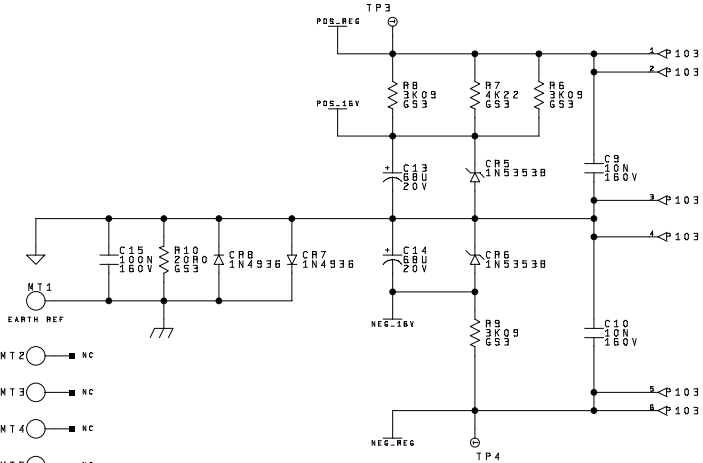
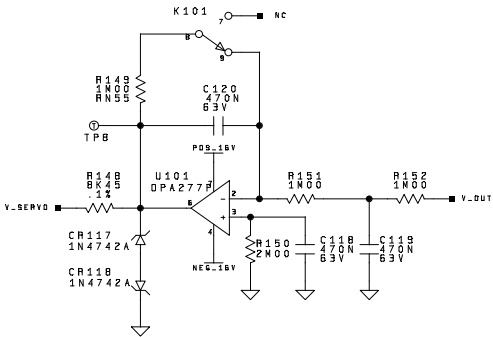
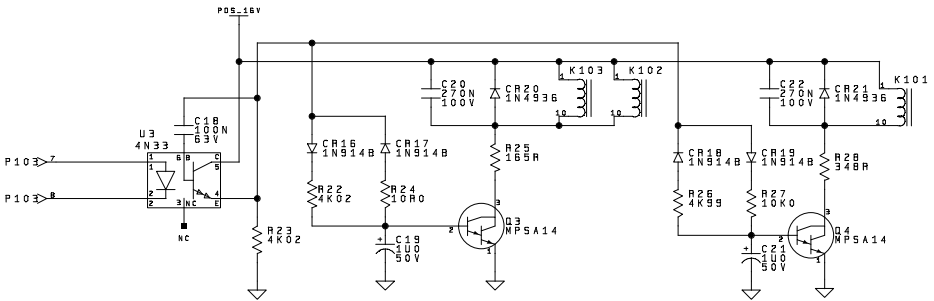
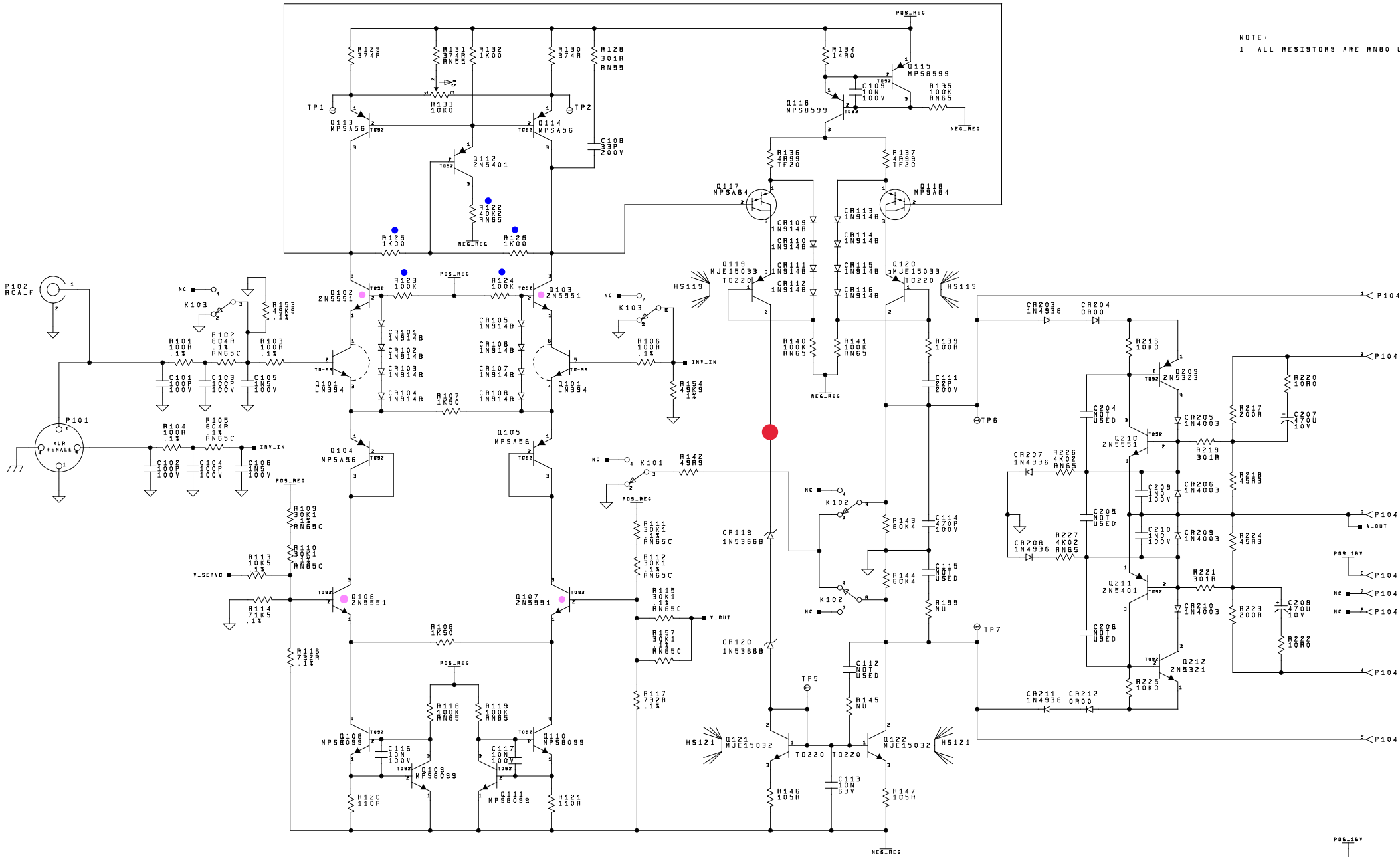


SYM	REVISION DESCRIPTION	DFTR	DATE
B	R12B, R131 WAS R160		9-12-2002
C	DELETE R156, R127, R13B, C107, C110		5-2-2002
D	CHANGE PCB RCA DECAL		6-5-2002
E	MT6, MT7 WAS A PENNUT		8-22-2002
F	DRAWING NUMBER CORRECTION		9-12-2002
	RECONNECT C207 C208 R220 R222		9-12-2002
	C204-P08 WAS 10N, R22B, R227 WAS 27K4 R160		9-12-2002
	ADD C209, C210, R220, R222 WAS 60R4		9-12-2002
	R21B, R224 WAS 634R, R219, R221 WAS 121R		11-18-2002

NOTE:  
1 ALL RESISTORS ARE R160 UNLESS OTHERWISE SPECIFIED.



ORIGINAL IN RED  
☒ BOARD No. 580708D-E/580709D-E  
☒ DWG No. 943460F  
RELEASE DATE: \_\_\_\_\_  
RELEASE DOC. \_\_\_\_\_  
Type of release: ☐ Prototype ☒ Production  
APPROVAL  
DRAFT \_\_\_\_\_ DATE: \_\_\_\_\_  
QC \_\_\_\_\_ DATE: \_\_\_\_\_  
ENG MWM \_\_\_\_\_ DATE: 12-05-2002  
MANU \_\_\_\_\_ DATE: \_\_\_\_\_  
INDUST DES \_\_\_\_\_ DATE: N/A

CAD IDB4384WDD  
MADRIGAL audio laboratories, s.p.a.  
2001 south main street madison connecticut 06457 u.s.a.  
CONTENTS OF THIS PAGE ARE PROPERTY OF MADRIGAL - A Harman International Company  
DRAWN BY \_\_\_\_\_ DATE 07-24-2001 SHEET 1 OF 1 SIZE D  
DESCRIPTION NO. 432 LEFT/RIGHT CHANNEL AUDIO CHANNEL DAUGHTER DWG No. 943460F