



## OWNER'S MANUAL

## INTRODUCTION

Thank you for choosing MTX to help you reach your ultimate goal with your vehicle. The MTX JackHammer is a true 22" subwoofer with power and performance beyond anything ever attempted in the mobile audio world. This behemoth, is capable of handling up to 4,000 watts of RMS power. Designed for those who want to show off the biggest woofer ever made.

This subwoofer is perfect for excessive bass and competition use. It can also be Re-coned if needed. For more information, see the *Piston Change (Re-cone Kit)* section in this manual or call 1-800-CALL-MTX.

The most enormous subwoofer continues to prove that MTX is the biggest, baddest, boldest car audio...ever!

## SPECIFICATIONS

<b>Model</b>	<b>T9922-22</b>
<b>Description</b>	22" JackHammer SuperWoofer with dual 2 Ohm voice coil
<b>Impedance</b>	2x2 Ohms
<b>Frequency Response</b>	20Hz-150Hz
<b>Power Handling (RMS)</b>	4000 Watts
<b>Recommended RMS Amplifier Power</b>	2000-4000 Watts
<b>Voice Coil Diameter</b>	6.5"
<b>Magnet Weight</b>	900 oz.
<b>Mounting Depth</b>	21.063"
<b>Cut Out Diameter</b>	20.025"
<b>Sealed Enclosure Net Volume</b>	6.0 ft <sup>3</sup>
<b>Vented Enclosure Net Volume</b>	8.7 ft <sup>3</sup>
<b>Port Dimensions (Slot Port)</b>	24 $\frac{1}{8}$ "H x 3 $\frac{3}{16}$ "W x 10"L
<b>Speaker Displacement</b>	1.8 ft <sup>3</sup>
<b>Port Displacement</b>	.5 ft <sup>3</sup>
<b>Tune Frequency</b>	32Hz

### T9922-22

Fs = 24 Hz  
 Qms = 5.044  
 Vas = 5.776 cu.ft  
 Cms = 0.039 mm/N  
 Mms = 1140.0 g  
 Rms = 33.92 kg/S  
 Xmax = 1 in  
 Xmech = 3 in  
 P-Dia = 18.49 in  
 Sd = 267.84 sq.in

P-Vd = 0.155 cu.ft  
 Qes = 0.441  
 Re = 0.87 ohms  
 BL = 18.41 Tm  
 Qts = 0.406  
 no = 0.487 %  
 2.83V SPL = 98.8 dB

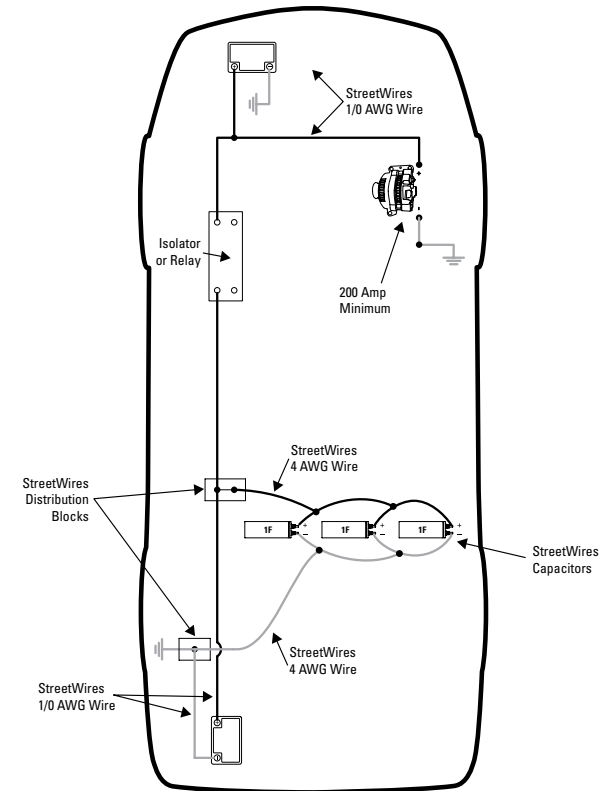
## BEFORE STARTING

It is very important that you have your JackHammer installed by an authorized MTX retailer, that is preferably MECP certified. Before installation, make sure you have read the instructions carefully and have the following equipment:

- Fork Lift (or another means of lifting approximately 370 lbs.)
- Electric drill
- Safety glasses
- Six  $\frac{3}{8}$ "-11 bolts 1  $\frac{3}{4}$ " long
- $\frac{3}{32}$ " drill bit
- T-30 Torx
- $\frac{3}{16}$ " wrench or socket
- $\frac{5}{16}$ " 4mm,  $\frac{3}{16}$ " hex keys
- 3mm hex wrench (if re-coning)

## ELECTRICAL UPGRADE

A factory electrical system will not be able to handle the power requirements of the amplifiers that are needed to drive the JackHammer. You will need to upgrade your vehicle's electrical system with both additional batteries and alternators. MTX Audio recommends West Co. SVR80 or SVR100 because they are a sealed battery that can be mounted in any configuration and supply the power needed. Also high-output alternators from either Ohio Generator or PowerMaster. It is recommended to use anywhere from 3 to 6 StreetWires capacitors to help control the flow of power, call 877.STREET1 for more information. The diagram below shows the wiring needs of your entire vehicle. Please see the *Strapping Thunder Amplifiers* section for further information.



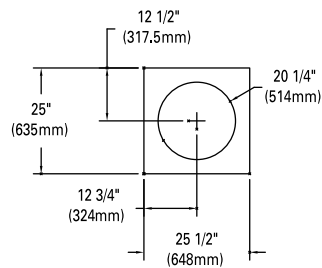
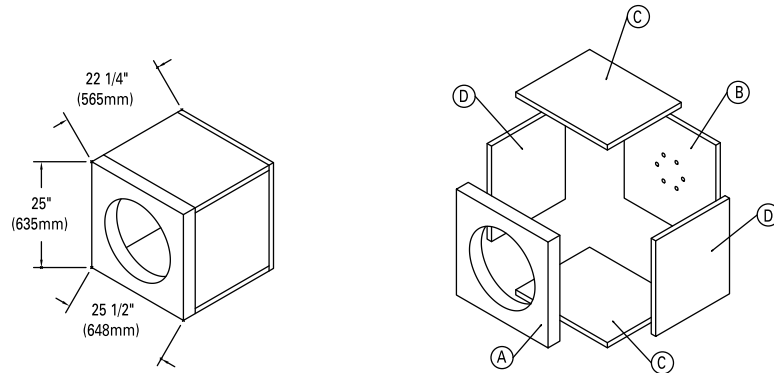
**STREETWIRES**  
CONNECTED TO THE STREET™

The  
True  
22  
.com

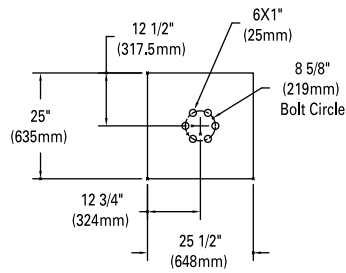
## RECOMMENDED ENCLOSURE REQUIREMENTS

### For Sealed Enclosures

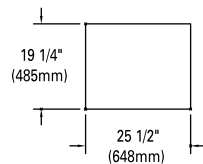
The JackHammer requires a volume of 4.2 cubic ft (net) per woofer. The woofer's displacement is 1.8 cubic ft. The total gross volume will be 6 cubic ft.



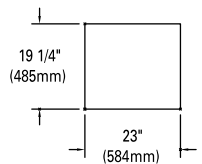
[A] - 2" (50mm) MDF



[B] - 1" (25mm) MDF



[C] - 1" (25mm) MDF

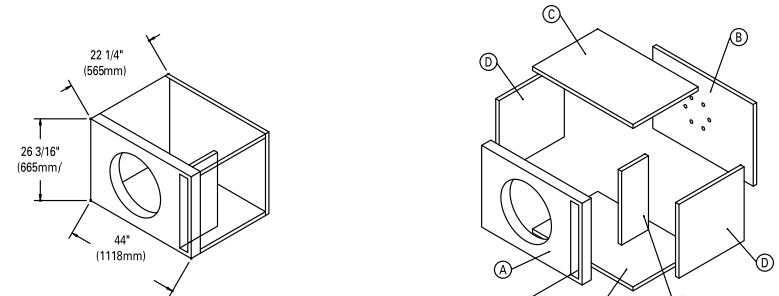


[D] - 1" (25mm) MDF

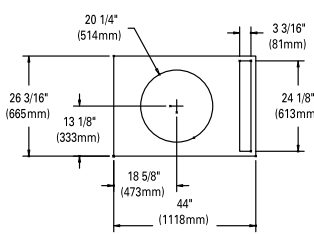
Additional ranges of sealed volumes for a sealed box is 5 cubic ft or greater gross volume.

### For Vented Enclosures

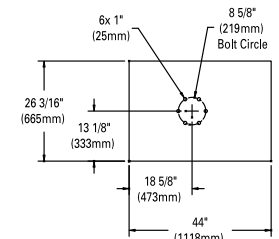
The JackHammer requires a volume of 8.7 cubic ft (net) per woofer. The woofer's displacement is 1.8 cubic ft. The port's internal dimensions are 24-<sup>1</sup>/<sub>8</sub>" x 3-<sup>3</sup>/<sub>8</sub>" x 10" and it takes approximately .5 cubic ft. The total gross volume will be 11.0 cubic ft.



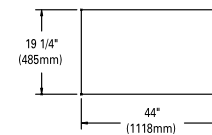
RADIUS PORT EDGES RECOMMENDED



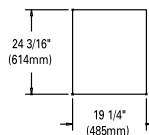
[A] - 2" (50mm) MDF



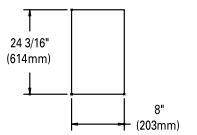
[B] - 1" (25mm) MDF



[C] - 1" (25mm) MDF



[D] - 1" (25mm) MDF



[E] - 1" (25mm) MDF

The final tuning frequency is 32Hz. Additional vented box suggestions are 7.75 to 9.5 (net) cubic ft. Remember to account for the driver (1.8 cubic ft) and the port displacement, with port tuning ranges from 32 to 42Hz, when mounting.