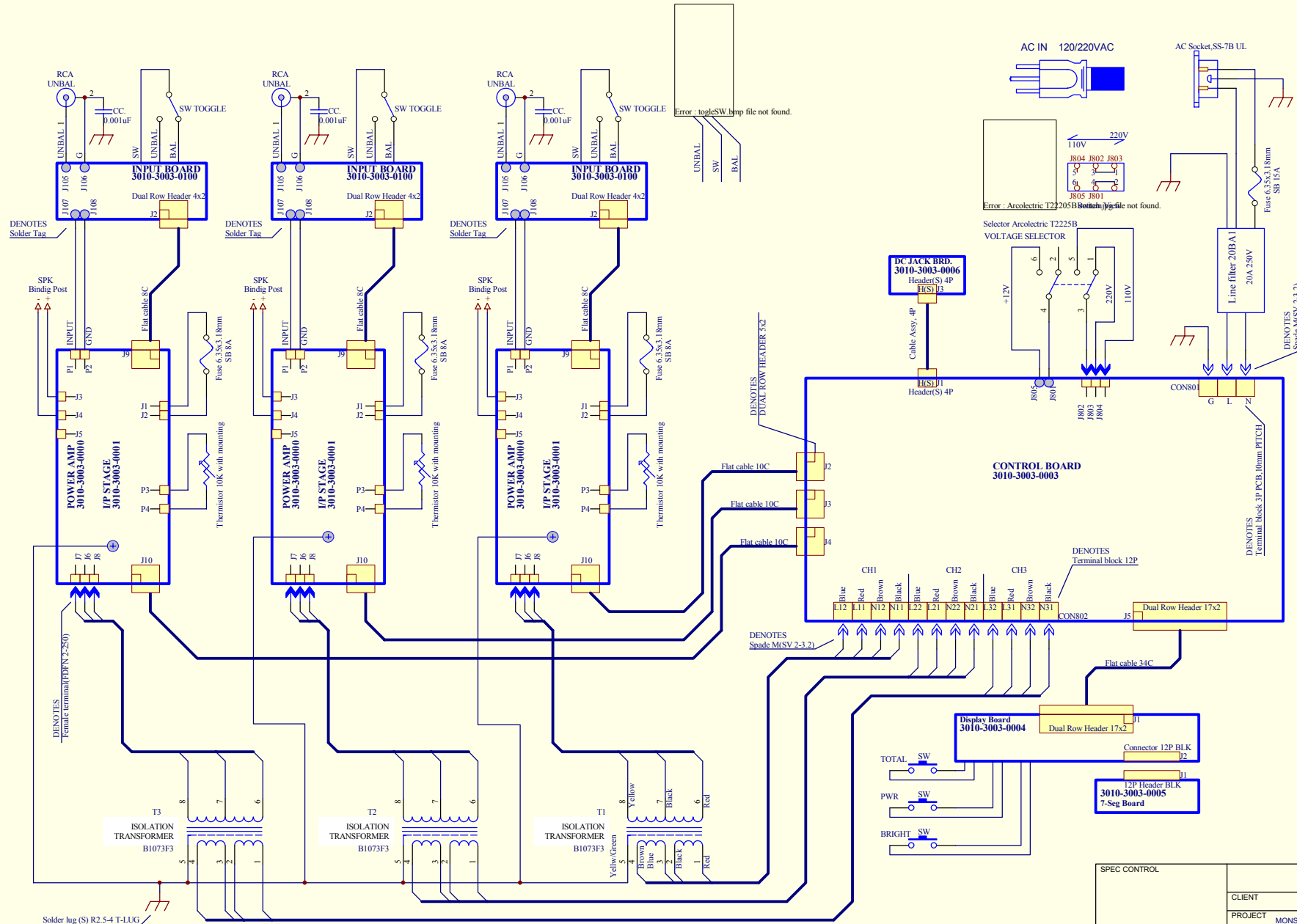


REVISION		
REV.	DESCRIPTION	DATE
A	Correction of errors.	24/11/03
B	Product revision change.	6/1/04
C	Change ground system (Ground lift)	13/10/04

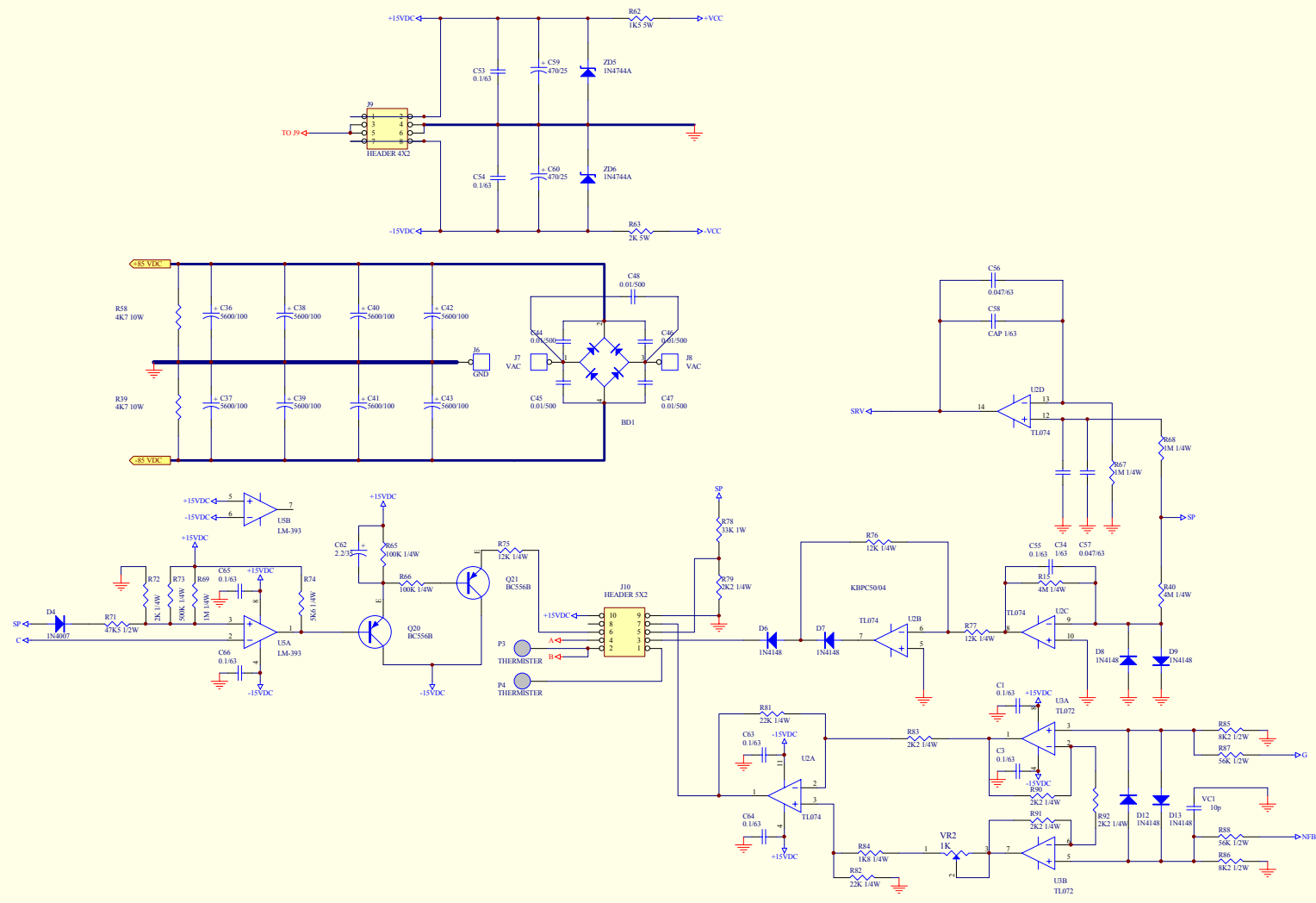
NOTES:



SPEC CONTROL		SCHEMATICS	
CLIENT		MONSTER CABLE	
PROJECT		MONSTER POWER AMPLIFIER A3250	
PART NAME		Monster Power Amp. A3250 Block Diagram	PRODUCT REV. A
DESIGNER		SOBSWAD	DOC NO. MAG-C-003
APPROVED		SOBSWAD	DATE 13 OCTOBER 2004
SIZE A3	DATE 13 OCTOBER 2004	REV. C	SHEET 2

REVISION		
REV.	DESCRIPTION	DATE
A	REV. 001/1.2	24/11/04
B	Product layout changes	1/1/04
C	No change on this sheet	13/10/04

NOTES:
1. Add pinheader for 2/3 CH selection and value R34-36,
VR1 change
2. Add current sensor circuit.

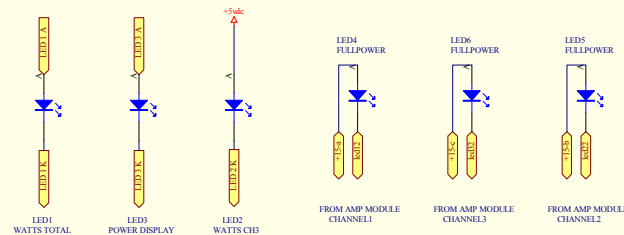
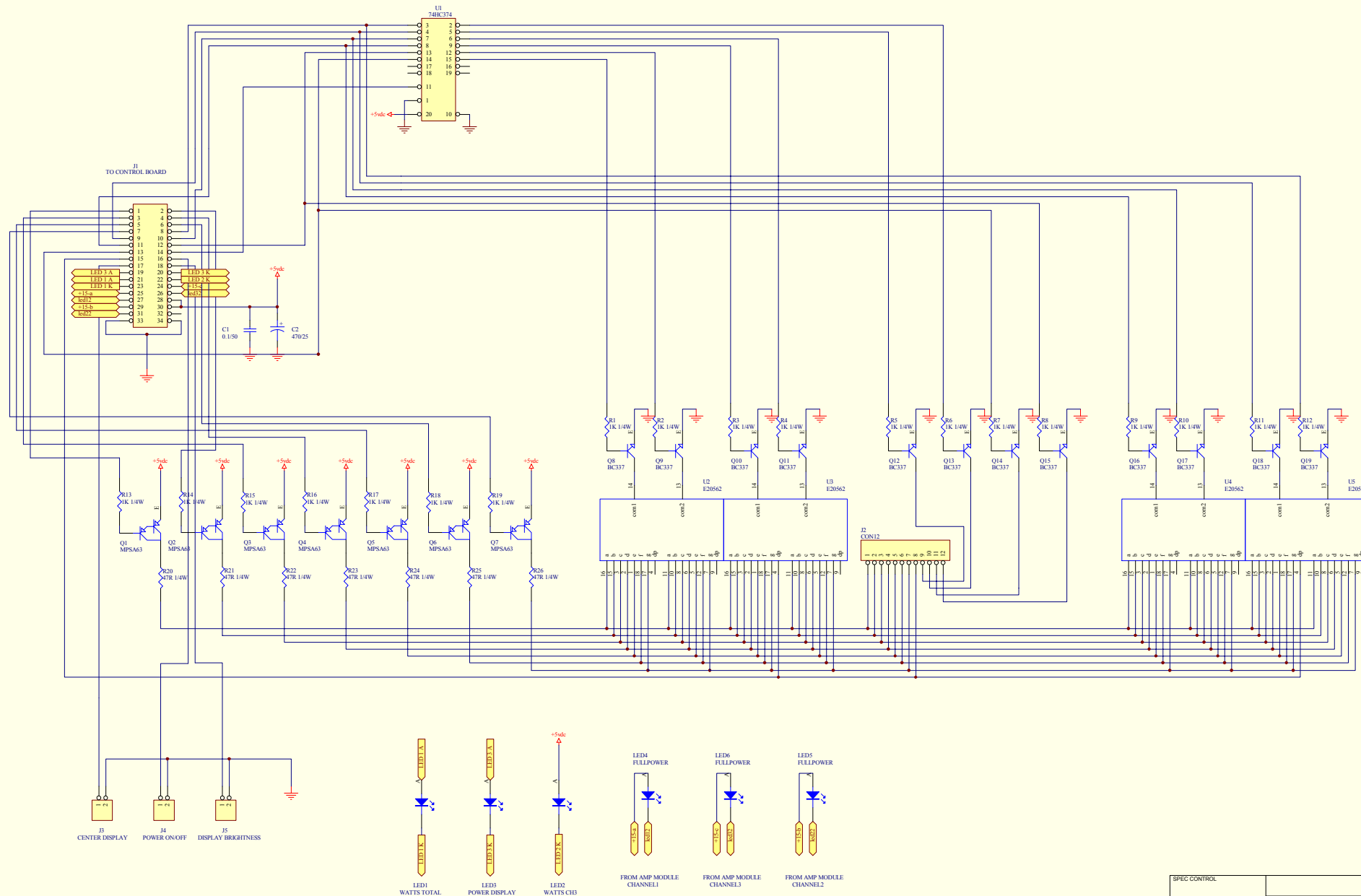


CONFIDENTIAL NOT FOR PUBLICATION
THIS DRAWING IS THE PROPERTY OF MONSTER CABLE PRODUCT INC.
USE BY OR DISCLOSURE TO ANYONE IN WHOLE OR IN PART TO ANY OTHER
THAN THE AUTHORIZED EMPLOYEES IS FORBIDDEN, EXCEPT TO THE EXTENT
PERMISSION IS ELSEWHERE GRANTED.

SPEC CONTROL		SCHEMATICS	
DESIGNER		CLIENT	MONSTER CABLE
APPROVED		PROJECT	MONSTER POWER AMP A3250
SIZE		PART NAME	Assembled A2250/3250 (1/2)
DATE		DOC NO.	MM-C-003
REV.		REV.	SHEET

REV.	DESCRIPTION	DATE
A	Change R20-26 to 0 Ohm	24/11/03
B	Product revision change	6/1/04
C	No change on this sheet	13/10/04

NOTES:

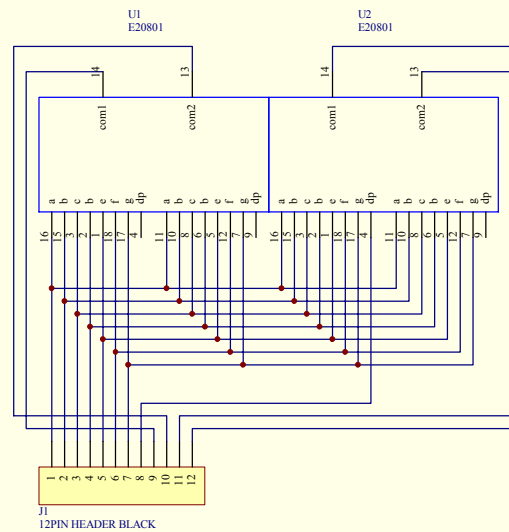


FOR A3250 SIGNATURE ONLY

CONFIDENTIAL NOT FOR PUBLICATION
THIS DRAWING IS THE PROPERTY OF MONSTER CABLE PRODUCT INC.
USE BY OR DISCLOSURE TO ANYONE IN WHOLE OR IN PART TO ANY OTHER
THAN THE AUTHORIZED EMPLOYEES IS FORBIDDEN, EXCEPT TO THE EXTENT
PERMISSION IS ELSEWHERE GRANTED.

SPEC CONTROL		SCHEMATICS	
CLIENT		MONSTER CABLE	
PROJECT		MONSTER POWER AMP A3250	
PART NAME		Assembled Display board A3250	
DESIGNER		SCHWAD	
APPROVED		SCHWAD	
PART NO.	7130-0101-0002	DOC NO.	MAC-C-003
SIZE	A2	DATE	13 OCTOBER 2004
REV.	C	SHEET	5

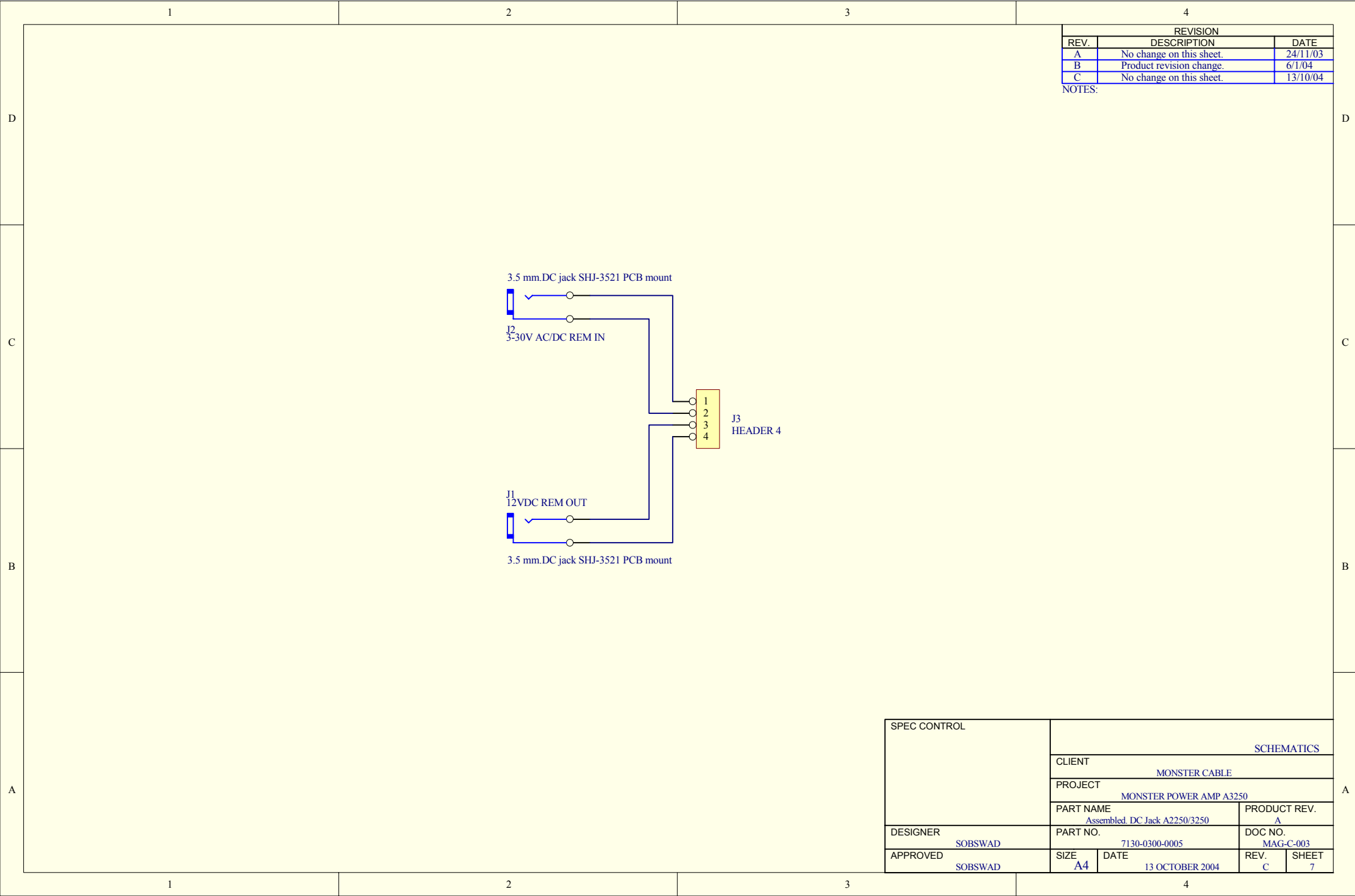
REVISION		
REV.	DESCRIPTION	DATE
A	No change on this sheet.	24/11/03
B	Product revision change.	6/1/04
C	No change on this sheet.	13/10/04

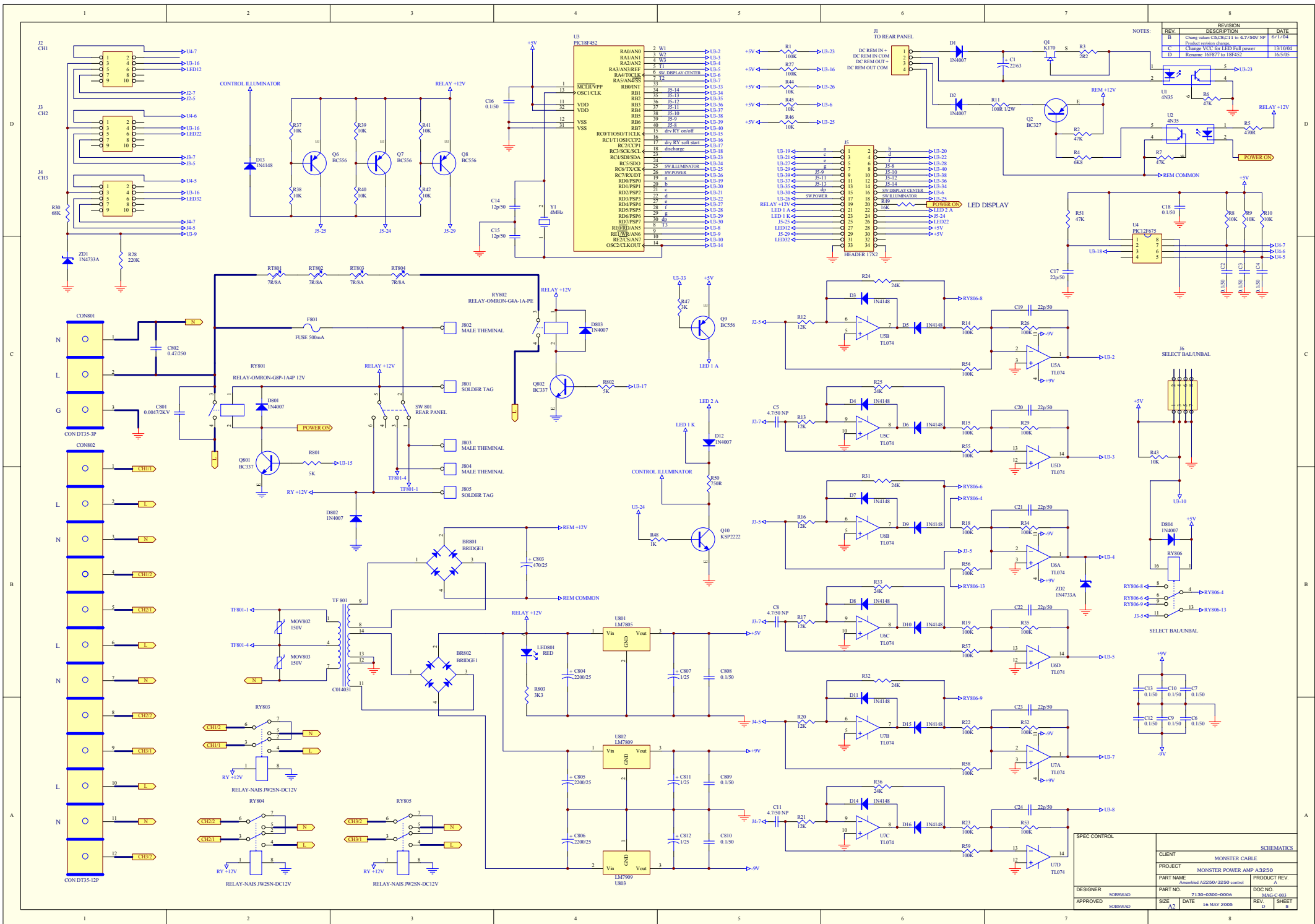


CONFIDENTIAL NOT FOR PUBLICATION
THIS DRAWING IS THE PROPERTY OF MONSTER CABLE PRODUCT INC.
USE BY OR DISCLOSURE TO ANYONE IN WHOLE OR IN PART TO ANY OTHER
THAN THE AUTHORIZED EMPLOYEES IS FORBIDDEN, EXCEPT TO THE EXTENT
PERMISSION IS ELSEWHERE GRANTED.

SPEC CONTROL	SCHEMATICS		
	CLIENT	MONSTER CABLE	
	PROJECT	MONSTER POWER AMP A3250	
	PART NAME	Assembled 7-Seg board. A2250/3250	
	PART NO.	7130-0300-0004	PRODUCT REV. A
DESIGNER	SOBSWAD	PART NO.	DOC NO. MAG-C-003
APPROVED	SOBSWAD	SIZE A3	DATE 13 OCTOBER 2004
			REV. SHEET

SCHEMATICS			
CLIENT			
MONSTER CABLE			
PROJECT			
MONSTER POWER AMP A3250			
PART NAME			PRODUCT REV.
Assembled, 7-See board, A2250/3250			A
PART NO.			DOC NO.
7130-0300-0004			MAG-C-003
SIZE	DATE	REV.	SHEET
A3	13 OCTOBER 2004	C	4

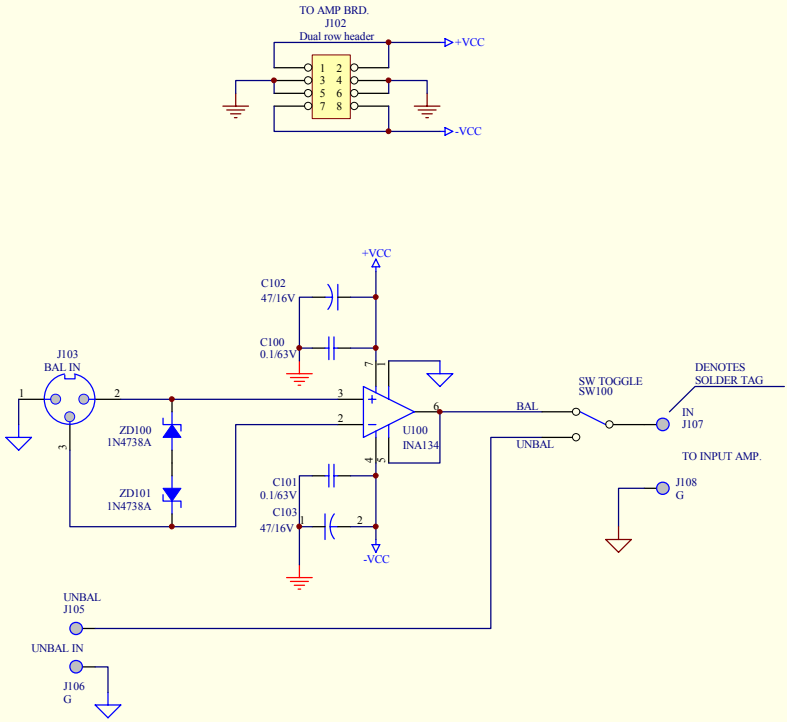




SPEC CONTROL		SCHEMATICS			
		CLIENT			
		PROJECT <u>MONSTER CABLE</u>			
		PROJECT NAME <u>MONSTER POWER AMP A2250</u>			
		PART NO. <u>I/P Stage module A2250 3250</u>		PRODUCT REV. <u>A</u>	
DESIGNER	<u>SOBWSWAD</u>	PART NO. <u>7230-0300-0003</u>		DOC NO. <u>MAG-C-003</u>	
APPROVED	<u>SOBWSWAD</u>	SIZE <u>A3</u>	DATE <u>13 OCTOBER 2004</u>	REV <u>C</u>	SHEET <u>9</u>

REVISION		
REV.	DESCRIPTION	DATE
A	No change on this sheet.	24/11/03
B	Product revision change.	6/1/04
C	No change on this sheet.	13/10/04

NOTES:



SPEC CONTROL		SCHEMATICS	
		CLIENT	MONSTER CABLE
		PROJECT	MONSTER POWER AMP A3250
		PART NAME	Assembled A3250 Input
DESIGNER	SOBSWAD	PART NO.	7130-0301-0001
APPROVED	SOBSWAD	DATE	13 OCTOBER 2004
		SIZE	A3
		REV	C
		SHEET	10