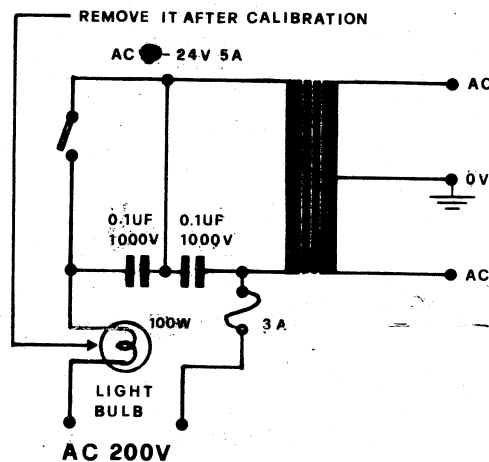
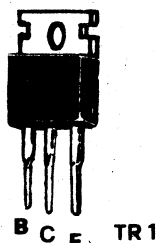
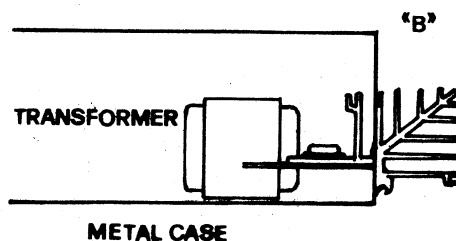
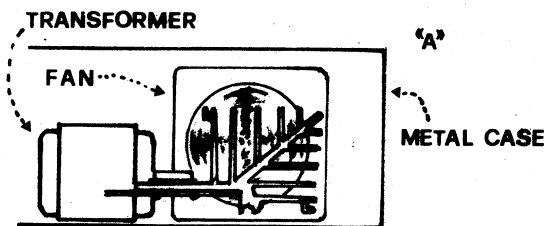
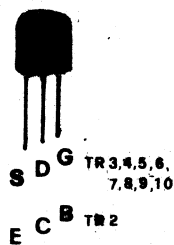
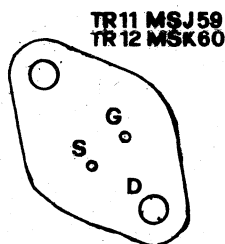


PHYSICAL DIAGRAM FOR POWER TRANSISTOR.

INPUT	SENT	: 1 VOLT
	IMPED	: 30 K
FREQ.	RESPO	: 0-100 KHz 1 dB
POWER BANDWIDTH		: 0-100 KHz
TIM		: 0.004 %
THD	1 KHz	: 0.002 %
SUPPLY	DC	: -35V \pm
	AC	: -24V X 2
CURRENT		: 5 A
OUTPUT	POWER	: 50W + 50W
LOADING	IMP	: 8-16 Ω



PROTECTIVE DEVICE FOR TESTING



YOU ARE SUGGESTED :

"A" : TO BUILD IN A FAN

OR

**"B": TO EXPOSED THE HEATSINK
TO THE AIR.**

IN ORDER TO COOL THE HEATSINK.

