

Parts List For One Amp

(Double everything for stereo pair)

R1	Min Res 22k	C2	Ceramic 220pF
R2,4	Min Res 2k2	C3	Ceramic 220pF
R3	Min Res 4k7	C4	Axial 470µF 16V
R5	Min Res 18k	C5	Ceramic 100pF
R6	Min Res 220R	C6	Axial 1µF 63V
R7	Min Res 10k	C7,8	Polystyrene 1000pF
R8	Min Res 1k	C9	Polyester 0.1µF
R9	Min Res 470R	C10,11,12	Axial 2.2µF 63V
R10	Min Res 8k2	Q1,2,3	ZTX304
R11	Min Res 4k7	Q4	BC161
R12	Horiz S-Min Preset 2k2	Q5	BC141
R13	Min Res 820R	Q6	BC182L
R14,17	Min Res 100R	Q7	BD139
R15,16	Min Res 120R	Q8	BD140
R18,19	W/W Min 120R	Q9,11	BD712
R20,21,23,24	W/W Min 0.47R	Q10,12	BD711
R22	W/W Min 10R	ZD1	BZX61C4V7
C1	Axial 10µF 63V	F1	Fuse 20mm 2A

L1 15 to 18 turns of 24swg enamelled copper wire wound on the body of a 1W Res 1k. Scrape off the enamel at each end of the coil and solder to the wires of the resistor.

The following parts are also required

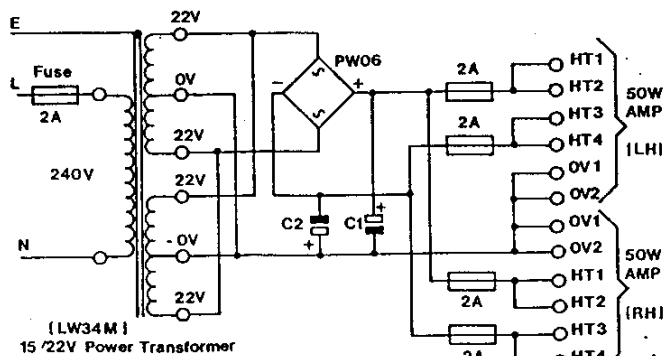
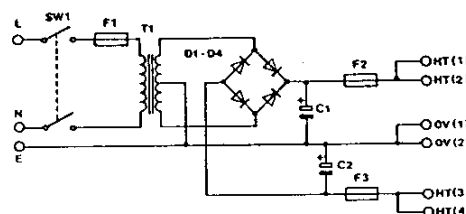
1	50W Hi-Fi PCB
1	50W Hi-Fi Heatsink (ready drilled)
2	Heatsink Clip-On
1	Chassis F/H 20mm
9	Pins 2141
2	Kit TO126
4	Kit (P) Plas
1m	Systoflex 2mm
1	Small Thermopath
9	Bolt 6BA 1/2in (pack of 10 only)
9	Nut 6BA (pack of 10 only)
9	Shake 6BA (pack of 10 only)

Solder, strapping wire, Wire 10M for power supply connections, Min Screened for input, Zip wire for output to loudspeaker.

Power Supply Parts List

These are NOT included in the amplifier kit.

C1,2	Can 4700µF 40V
D1-4	1N5402 (4 off) (Mono)
	PW06 (1 off) (Stereo)
T1	Tr 28V 1 1/2A (Mono)
	15/22V Power Tran (Stereo)
F1	F Holder 20
	Fuse 20mm 1A



PSU for Stereo 50W Amp

PSU for Mono 50W Amp

F2,3	Chassis F/H 20mm
	Fuse 20mm 2A (Mono) 4A (Stereo)
SW1	DPST Switch e.g. Toggle Switch
LP1	Pan Neon (connected across primary of T1)

Printed Circuit Board

Order

HQ68Y (50W Hi-Fi PCB)

Kit

A complete kit of parts for this project offering a saving over buying all the parts separately. Kit does not include Zip Wire or Min Screened Cable.

Order

LW35Q (50W Amp Kit)