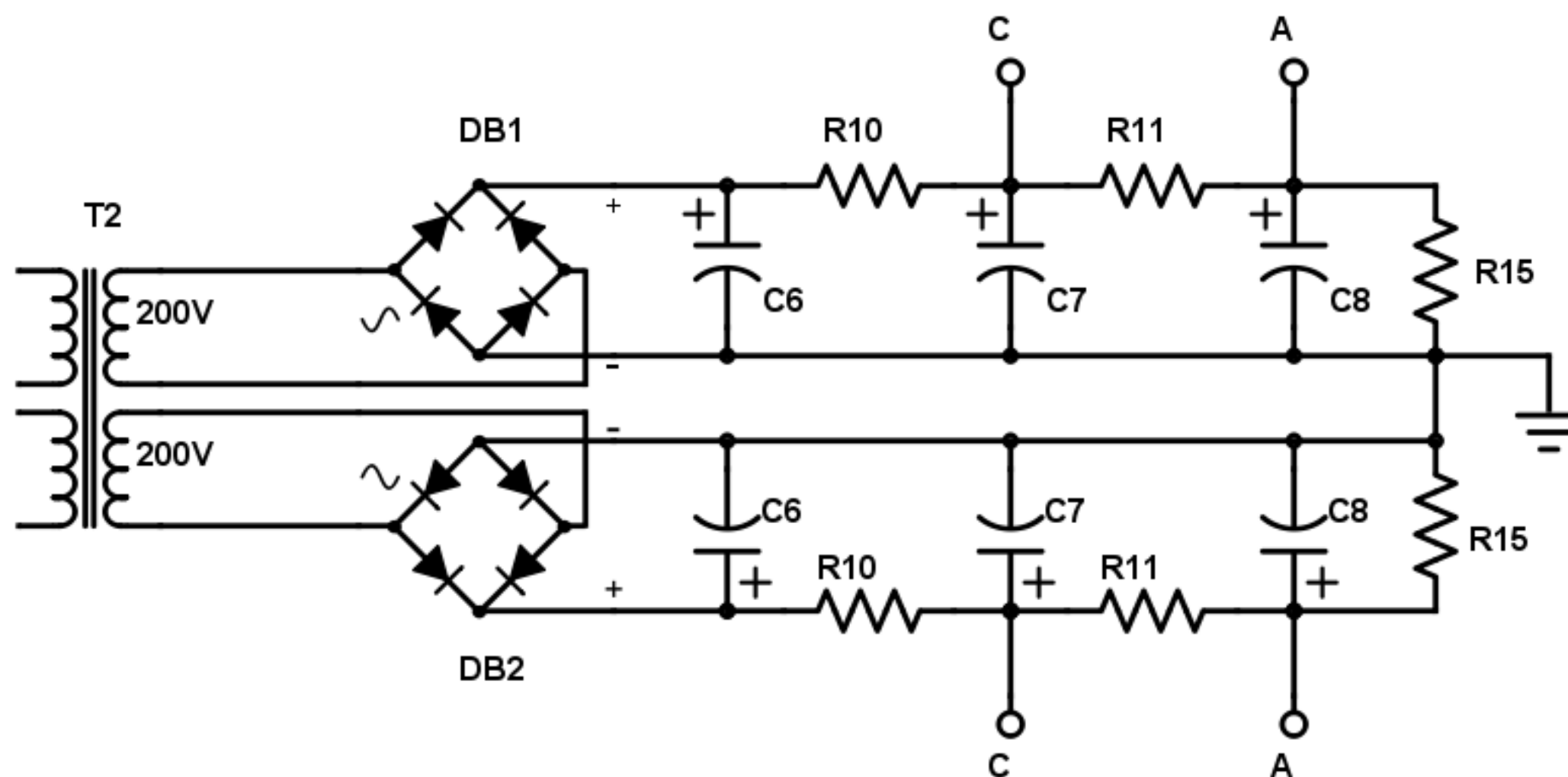


ALTERNATIVE POWER SUPPLY USING ANTEK AS-1T200 FOR T2

configure primary per
Antek instructions and
original schematic above



filament windings not shown
configure per original schematic above
use separate winding for each channel

DB1= DB2= 1000V/4A
RS-407L or equivalent

R10= 560/ 3 watt min.
adjust value for approx. 200V between
plate and cathode of 6Y6