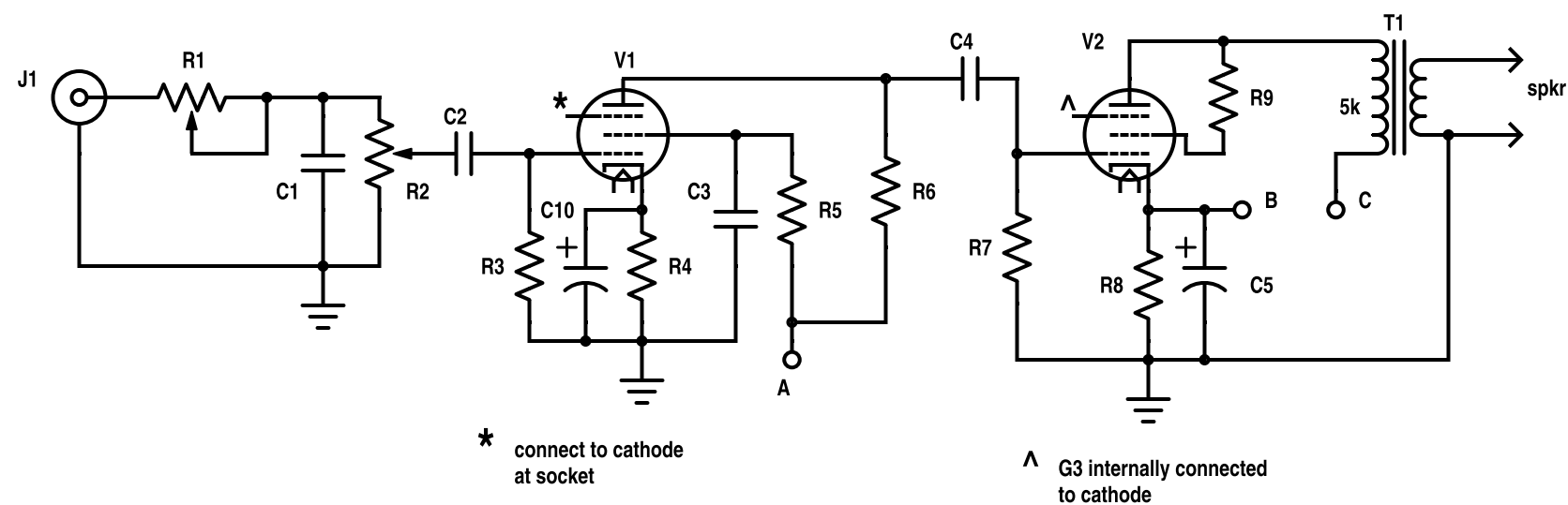


## "LITTLE SWEETIE" MONO SET



**all resistors 0.5 watt unless specified**

**R1= 10k linear taper**

**R2= 500k log taper**

**R3= 750k to 900k**

**R4= 560**

**R5= 390k**

**R6= 100k**

**R7= 470k**

**R8= 600, 3 watt min.**

**R9= 100**

**R10= 180/ 2 watt min.**

R11= 3k/ 2 watt min.

R12=R13= 33 to 75/ 1 watt min.

**R14= 0.3/ 3 watt min.**

adjust value for 6.1  
to 6.3V on filaments  
at typical line voltage

**R15= 180k to 250k/ 3 watt min.**

**C1= 2200 pf, any voltage**

**C2= .1 uf, any voltage**

**C3=C4= .22 uf, 400V min.**

**C5= 220 uf/ 50V min.**

**C6=C7=C8= 220 uf, 350V min**

**C9= .1 uf, class X or Y**

**C10= 220 uf, 6V min.**

**F1= 500 ma to 600 ma**  
**slow-blow type**

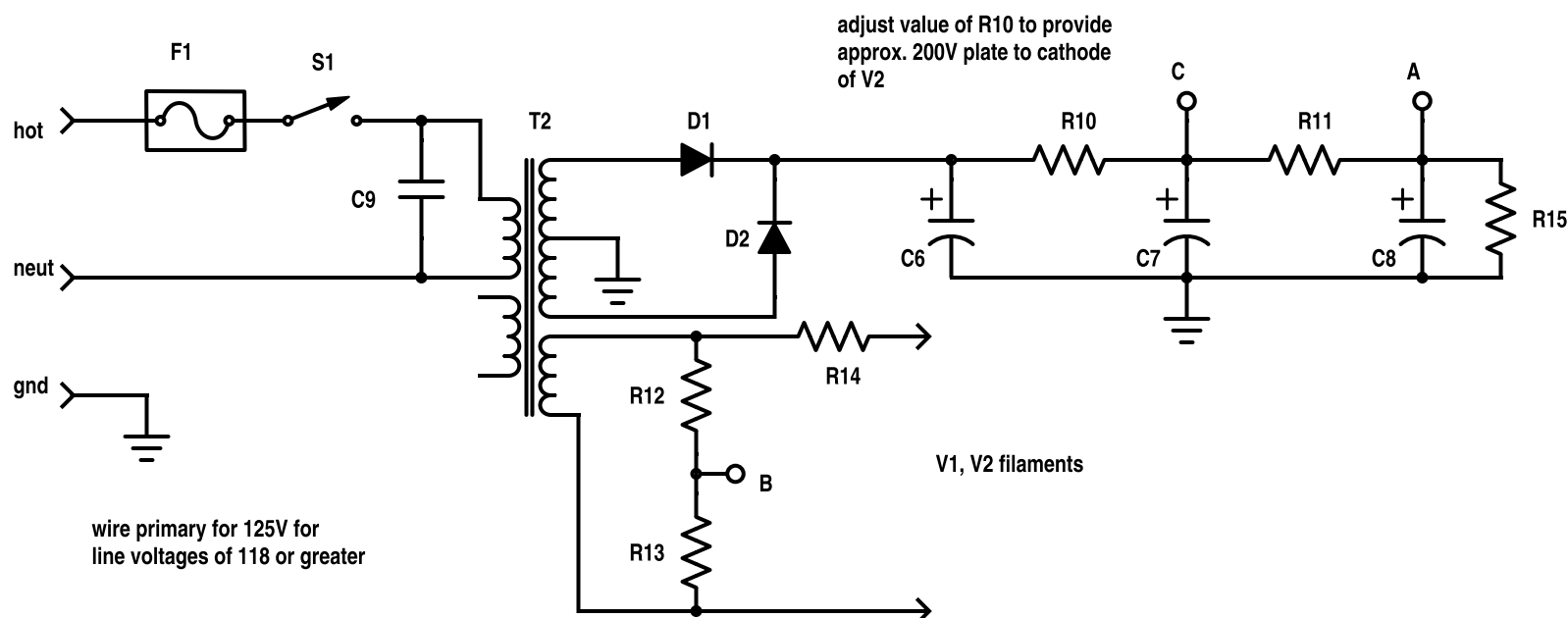
**D1=D2= 1N5408**

V1= 6SJ7

V2= 6Y6

**T1= Hammond 125CSE or equiv.**

**T2= Hammond 269EX**



wire primary for 125V for  
line voltages of 118 or greater