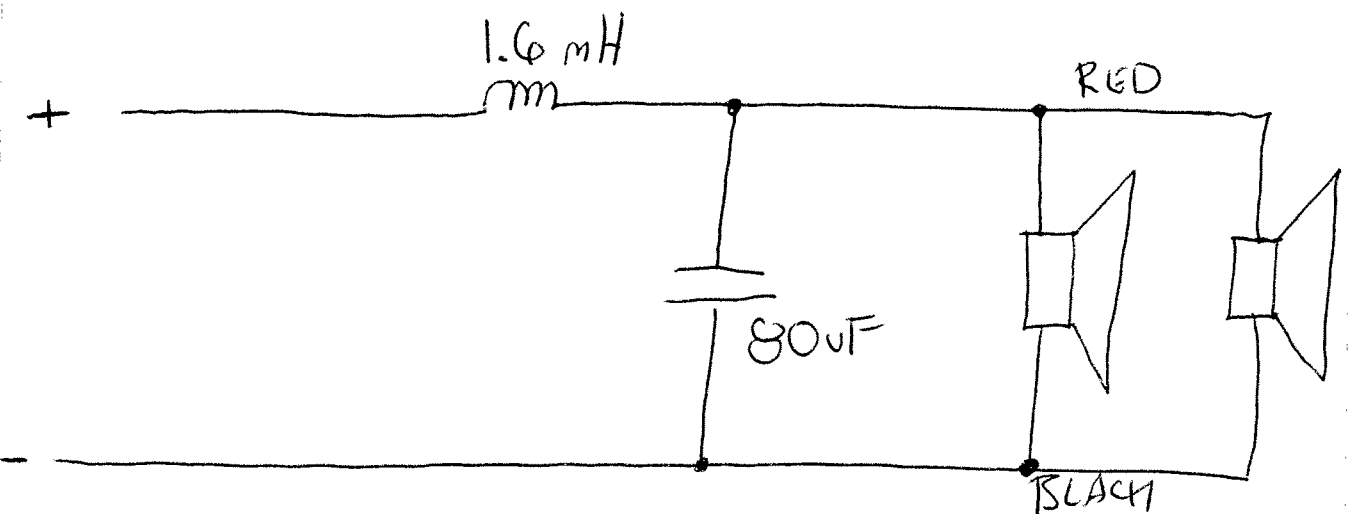
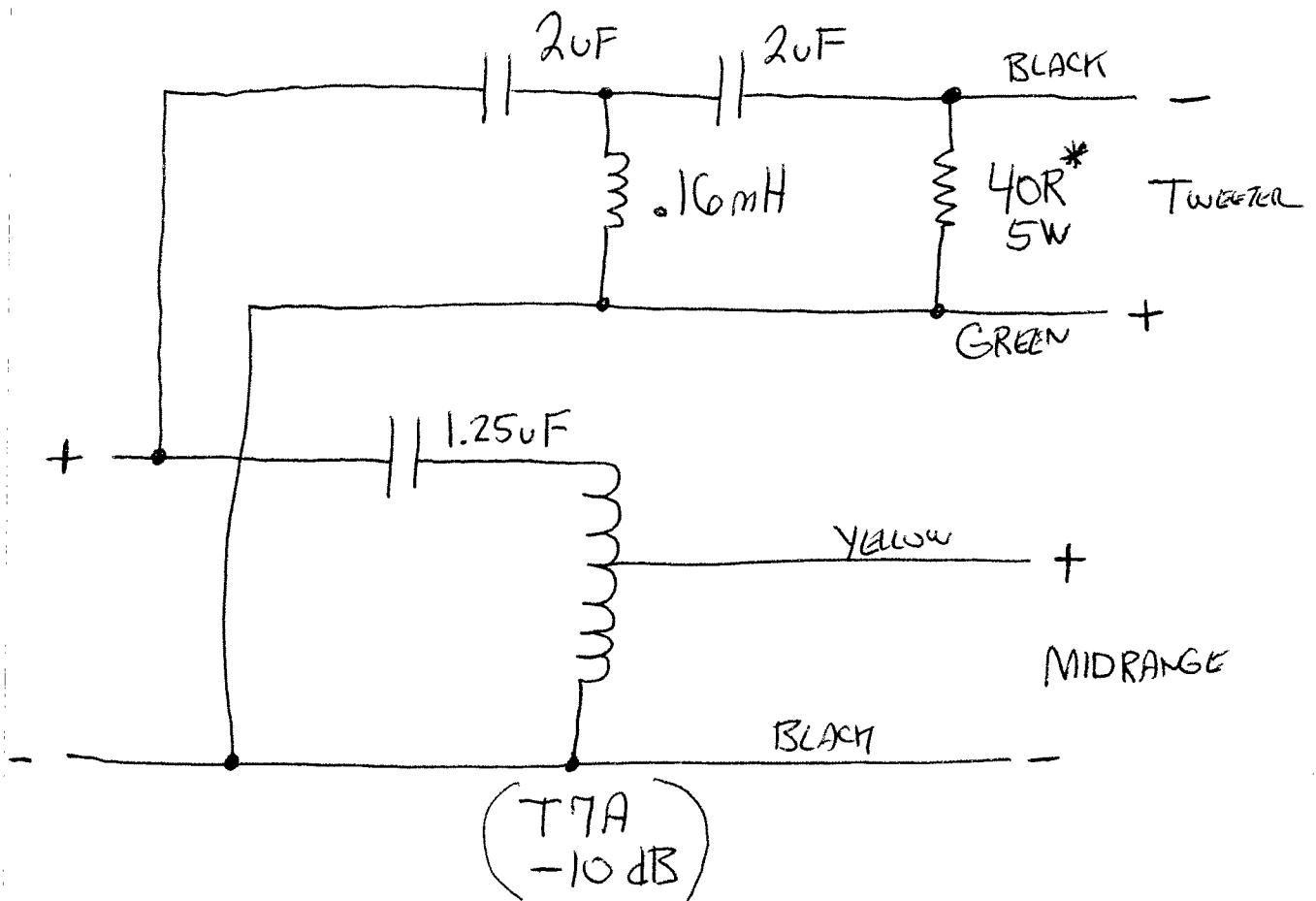



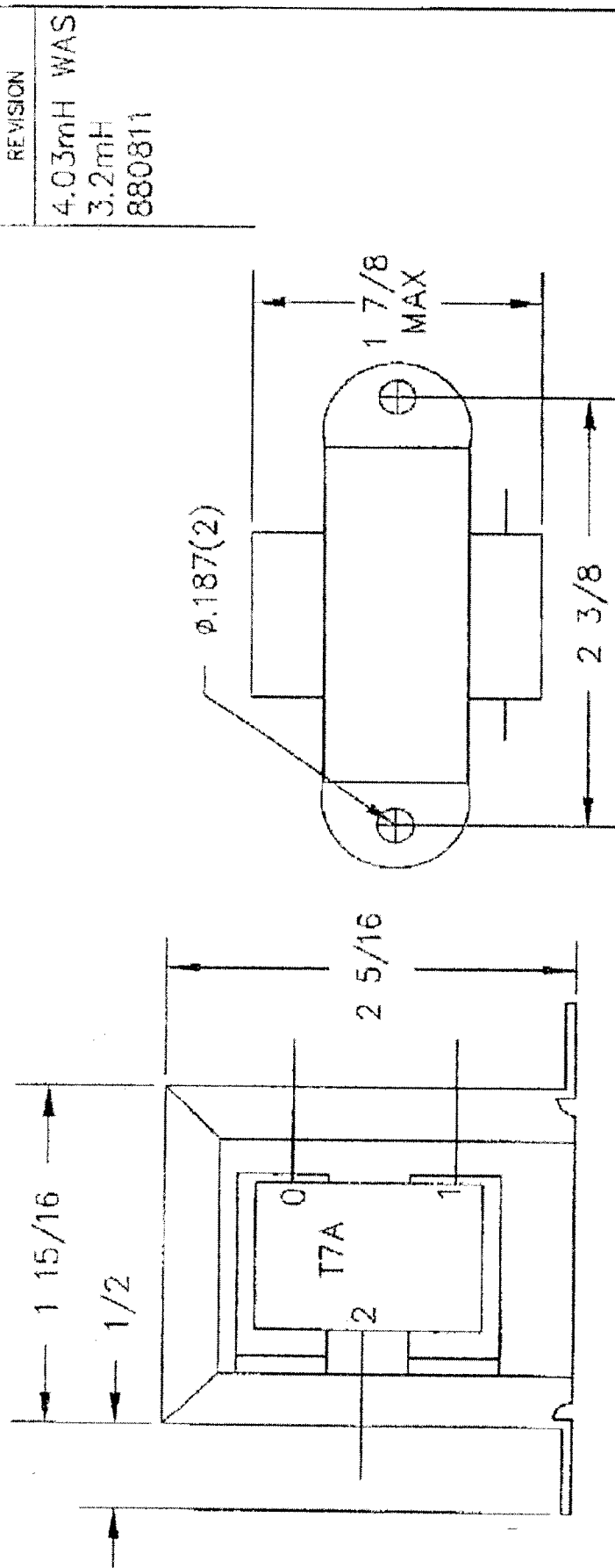
KLF 20 FACTORY X-OVER

750Hz 7000 KHz



* 40R CAN BE REPLACED BY .15mH INDUCTOR

 KLIPSCH AND ASSOC., INC. P.O. BOX 688, HOPE, ARK. 71801	DATE 860908		SCALE FULL		TOLERANCE UNLESS OTHERWISE SPECIFIED		TITLE		
	DIMENSIONS SAE		1 OF 1		FRACTIONS $\pm 1/32$ DECIMALS \pm CHECKED APPROVED DRAWN CC		AUTOFORMER (T7A)		
1st REF.					DRAWING #				
3504					P11D8003				



SPECIFICATIONS

PINS	-dB	L (mH)	R (OHMS)	Vout (*)
0-1	10	$\pm 15\%$ 4.03	$\pm 10\%$ --	3.16
0-2	0	--	0.70	10

Vout IS MEASURED WITH 10 VAC
 AT 1000 Hz. APPLIED TO PINS 0-2,
 WITH PIN 0 AS GROUND.

WAX IMPREGNATED WINDINGS
 WINDING TO BE TIGHT ON CORE
 LEAD LENGTH SHALL BE 3".
 LEADS SHALL BE TINNED FROM
 THE END TO 1 1/2".

4.03mH WAS
 3.2mH
 880811