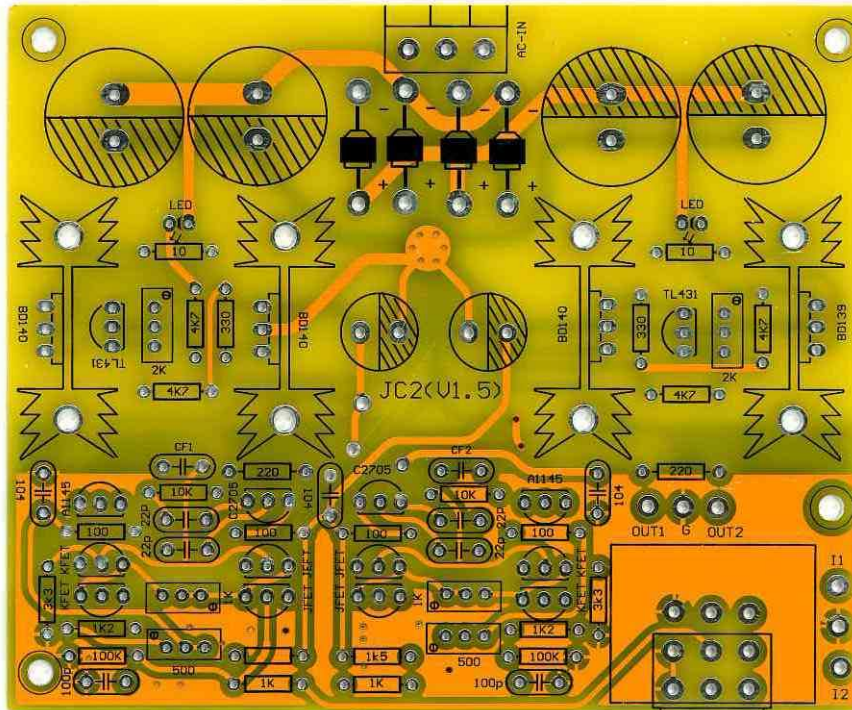


JC-2 v3 Construction and adjustment note



Placement Note :

1. CF1 and CF2 require no component. Please simply leave those nodes unsoldered.
2. KFETs are for placing of 2SK246s.
3. JFETs are for placing of 2SJ103s.
4. Dale resistors have their own set of values so we pick the nearest values for the board. Please refer to the part list below.

Adjustment Note :

1. Adjust the 2K trimmers such that the rail voltage is +/-15V to +/-20V
2. Adjust 1K trimmers, such that the voltage drop on the 1.5K resistors is around 2.5V to 3V.
3. Finally, adjust 500 ohm trimmers on both channels so that the output DC offset approaches 0mV.
4. Adjustment done.

JC-2 V3 part list		

Components	Dale value	Qty
1K trimmer		2
2K trimmer		2
500 ohm trimmer		2
TL431 TI		2
10 ohm	12 ohm	2
100 ohm	110 ohm	4
1K2	1.18K	2
100K	110K	2
10K	10K	2
1K	1.1K	4
220 ohm	220 ohm	2
330 ohm	350 ohm	2
3k3	3.29K	2
4K7	4.64K	4
K246。 J103 matched		4 pairs
BD139		1
BD140		3
5mm red LED		2
c2705.1145 matched		2 pairs
2A 高速整流管		4
100p color code cap		2
0.15 (or 0.15u)		3
10PF color code cap		2
22Pcolor code cap		4
1500uF E-Cap BC		4
100U		2
3-pin terminal		1
PCB		1
Heatsink		4

