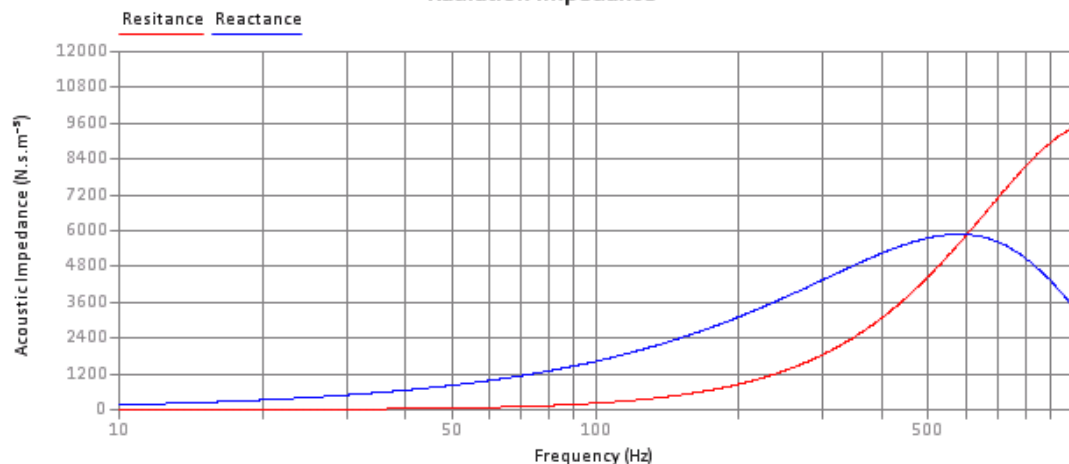




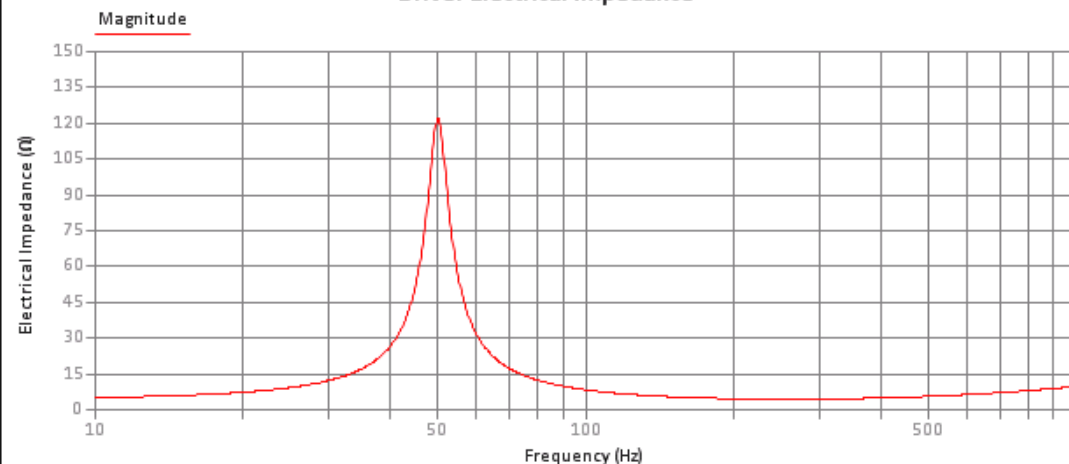
☐ Infinite Baffle ☐ Driver ☐ Terminus ☒ System

SPL Phase Impedance Displacement Velocity Group Delay

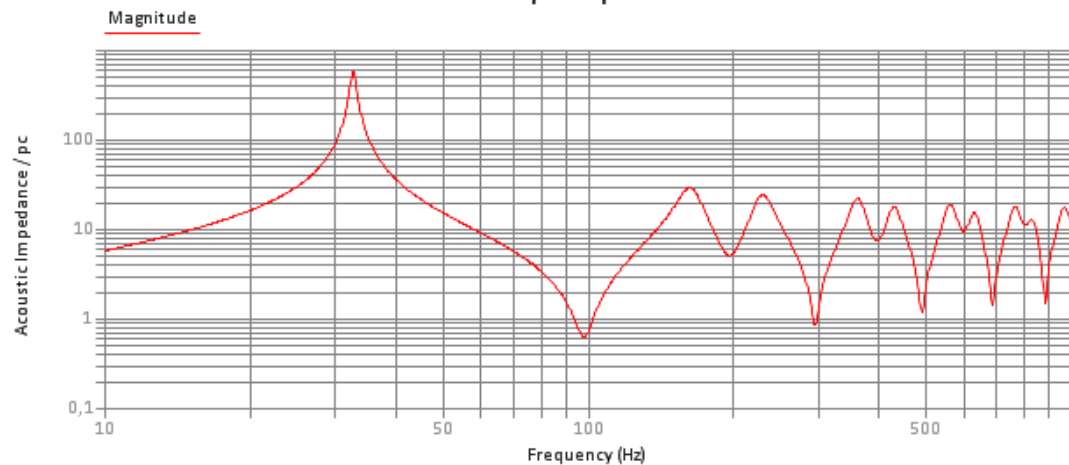
Radiation Impedance



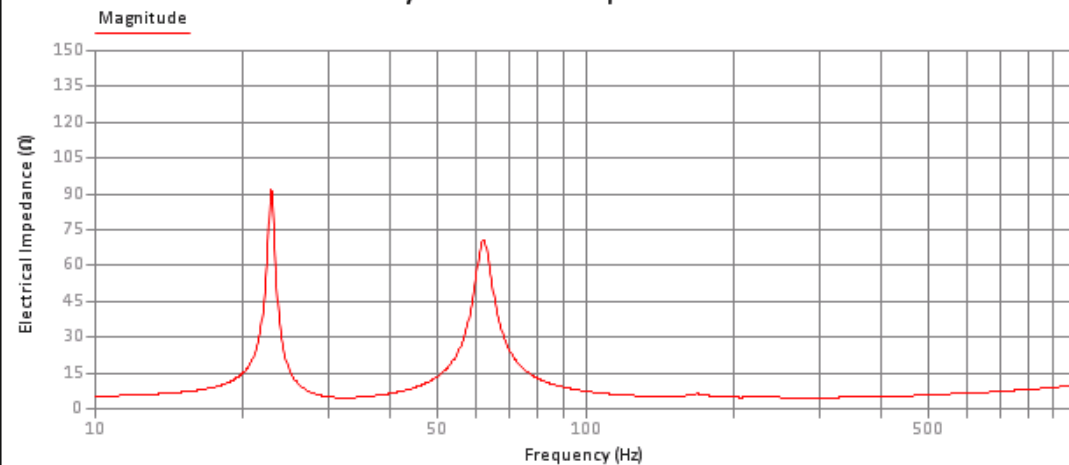
Driver Electrical Impedance



TL Acoustic Input Impedance



System Electrical Impedance



Freq: 0,0 Hz Value: [Driver = 0,0] [System = 0,0]