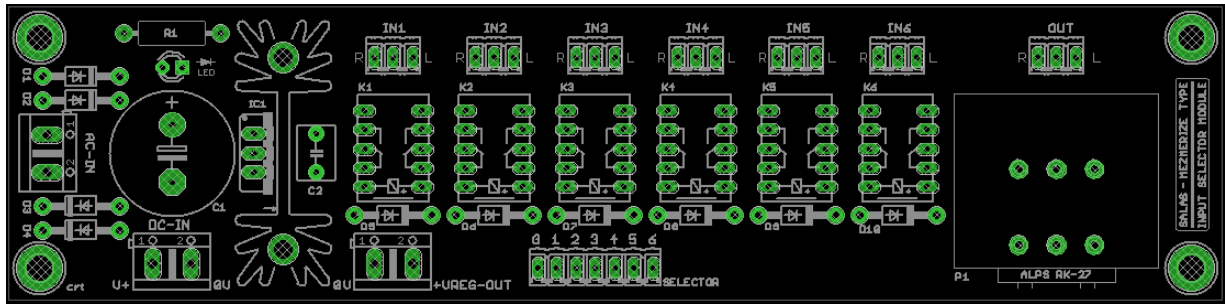


## Mezmerize Type Input Selector Module



This board accepts six high quality mini relays for the selection and routing of stereo audio inputs through a volume pot to a preamplifier. Based on the reliable input section design of the popular Mezmerize buffer it can be useful in any other preamp project as an input module. Or even used as a standalone passive preamp.

It has its own rectification & smoothing section accepting AC-IN and a bypass DC-IN connector. One or the other type of voltage must be fed in, not both. A 7812 regulator stabilizes power to the relays. There is a sink provision for that chip if external peripherals are being powered also when utilizing the 12V +VREG-OUT connector.

Any number of relays between 2-6 can be populated making for a respective number of switchable stereo inputs. Incoming and outgoing wires are connecting to headers or directly soldered on the back edge IN/OUT pads. Locate the board near the back panel as well as away from transformers.

The six positions rotary selector switch can be continuous type or stop type that can configure for less number of positions initially and expand the number of inputs later. Typically Alpha Taiwan or Lorlin CK series. The switch is not engaging the signal. Don't spend on expensive selectors. When configuring for few inputs a toggle switch may also suffice.

The volume control area directly sits an ALPS Blue or compatible sized pots. Face the shaft towards the RK-27 designation. Extend it with a rod to the front panel. Mounting on a nearby bracket or on the front panel and wiring back to the PCB is doable also. Various non PCB fitting types like Cosmos, TKD, Audio Note, Noble or big stepped attenuators can be mounted in those ways too.

### SPEC

Dimensions: 160 mm X 39mm

Input voltage: 12-22V AC IN or 15-30V DC IN raw / regulated

Output voltage: 12V regulated DC OUT 1A maximum (with sink)

Input / output Impedance: Depends on the pot value specified for each preamplifier design

### PARTS

D1-D10 1N4003 (diodes X10). IC1 LM7812. K1-K6 NEC EA2-12NJ (relays X6)

3PIN Molex 2.54mm pitch male headers (x7) if not skipped for direct wire soldering

2PIN Molex 5mm pitch screw terminals (x3)

C1 2200uF/35V 16mm D 7.5mm lead pitch. C2 100nF 63V 5mm lead pitch MKT

R1 2.2K 1/4W. LED (PWR ON indicator) any color.

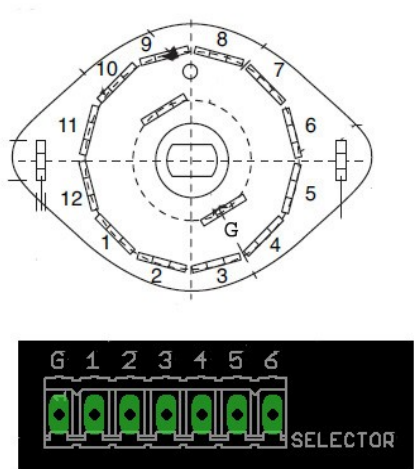
SINK (optional) Wakefield 637-10ABPE or equivalent

P1 ALPS RK-27 (typically). SELECTOR 1POL or 2POL 6POS rotary switch (Alpha, Lorlin)

When buying a dedicated power transformer for this board order a 12VAC 12VA model

Useful Details

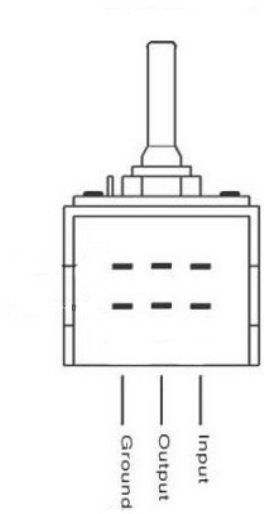
Alpha Taiwan selector example  
Pole contact (G) connects to PCB G  
Contacts 1-6 connect to PCB 1-6



Volume control area top view  
pot's front is facing down



Alps Blue pins  
bottom view



REPEAT FOR EACH INPUT

