

### PART LIST (FP505)

NO	CODE	NAME	STAN	Q'TY	REMARK
1	B-FLUX-----1	FLUX NT2016	@50000	3.00	
2	B-IPA-----1	IPA 2070	15kg:@28,000 g	3.00	
3	B-SLDR-BAR--1	SOLDER BAR 60%	kg:\$4.0 g:\$0.004	22.00	
4	B-SLDR-WIRE-1	SOLDER WIRE 60%	kg:\$4.2 g:\$0.0042	6.00	
5	B-TUB-EMP1--1	TUBE EMPIRE	1mm/O.O5 @70	105.00	Q107, Q207, Q307, Q407, Q507, TH1
6	H-CER-100CHT1	CER CAP 100PF CH	TP TYPE	11.00	C144, C145, C244, C245, C344, C345, C444, C445,
7	H-CER-100CHT1	CER CAP 100PF CH	TP TYPE	0.00	C542, C544, C545
8	H-CER-104T--1	CER CAP 104PF	TP TYPE	1.00	C1
9	H-CER-10---T1	CER CAP 10PF	CH TP TYPE	7.00	C149, C203, C249, C349, C403, C449, C549
10	H-CER-220CHT1	CER CAP 220PF CH	TP TYPE	2.00	C242, C442
11	H-CER-330T--1	CER CAP 330PF	TP TYPE	2.00	C142, C342
12	H-CER-56CHT-1	CER CAP 56PF CH	TP TYPE	3.00	C103, C303, C503
13	H-COPER-2--10	COPER 2P	90MM	3.00	CO15, CO18, CO19
14	H-COPER-2--3	COPER 2P NI	15X30 30mm	3.00	CO1, CO3, CO12
15	H-COPER-2--4	COPER 2P NI	45mm	2.00	CO13, CO14
16	H-COPER-2--5	COPER 2P NI	15X60 60mm	2.00	CO4, CO10
17	H-DIO-25C---2	DIODE YG225C2	YG225C2 Y=24	2.00	D8, D8A
18	H-DIO-25N---2	DIODE YG225N2	YG225N2 Y=24	2.00	D7, D7A
19	H-DIO-4002--1	DIODE IN4002		1.00	D6
20	H-DIO-4148--1	DIODE IN4148M		14.00	D1, D1A, D2, D2A, D4, D50, D51, D101,
21	H-DIO-4148--1	DIODE IN4148M		0.00	D201, D301, D401, D501, D601, D602
22	H-DIO-6A10--1	DIODE 6A10 (P600M)		1.00	D3
23	H-DIZ-1W15V-1	DIODE ZENER TZP15B	IN4744/1W	2.00	DZ1, DZ2
24	H-DIZ-5.6B--1	DIODE ZENER MTZ5.6B		1.00	DZ601
25	H-DIZ-7.5B--1	DIODE ZENER MTZ7.5B		1.00	ZD1
26	H-E10-25SHT-1	EC 10/25 5x11 SHL	TP TYPE	5.00	C148, C248, C348, C448, C548
27	H-E10-25SRT-1	EC 10/25 5x7 SRA	TP TYPE	2.00	C510, C513
28	H-E10-50SHT-1	EC 10/50 5x11 SHL	TP TYPE	2.00	C15, C602
29	H-E13-16KMG-1	EC 1000/16 10X16 KMG		6.00	C3, C3A, C30, C30A, C4, C4A
30	H-E13-50SM--1	EC1000/50 16x25 SMS		4.00	C8, C8-1, C9, C9-1
31	H-E1-50SHT--1	EC 1/50 5x11 SHL	TP TYPE	3.00	C14, C23, C28

### PART LIST (FP505)

NO	CODE	NAME	STAN	Q'TY	REMARK
32	H-E220-25SHT1	EC 220/25 8x11.5 SHL	TP TYPE	2.00	C55, C56
33	H-E223-35SH-1	EC2200/35 16x25 SHL		4.00	C8A, C8A1, C9A, C9A1
34	H-E330-16SHT1	EC 330/16 8x11.5SHL	TP TYPE	2.00	C2, C19
35	H-E33-25SHT-1	EC 33/25 5X11 SHL	TP TYPE	5.00	C143, C243, C343, C443, C543
36	H-E4.7-25SRT1	EC 4.7/25 4X7 SRA	TP TYPE	9.00	C102, C141, C202, C241, C302, C341, C402, C441,
37	H-E4.7-25SRT1	EC 4.7/25 4X7 SRA	TP TYPE	0.00	C502
38	H-E4.7-25SRT1	EC 4.7/25 4X7 SRA	TP TYPE	1.00	C541
39	H-E4.7-50SHT1	EC 4.7/50 5X11 SHL	TP TYPE	4.00	C101, C201, C301, C401
40	H-E47-16SR-T2	EC 47/16 5x7 SRJ	TP TYPE	2.00	CX1, CX2
41	H-FUS-25A---1	FUSE 25A		3.00	FUSE1x2EA, FUSE2
42	H-FUS-HOL3-31	HOLDER FUS P3	DKT-08011 PCB-INSERT	1.00	FUSE2
43	H-FUS-HOPL231	HOLDER FUS DKF-08021	DOUBLE, PCB	1.00	FUSE1
44	H-IC-13700D-1	IC NJM13700D		1.00	U55
45	H-IC-358P---1	IC KIA358P		1.00	IC302
46	H-IC-4558---1	IC KA4558(MC4558)		5.00	U11, U12, U31, U32, U52
47	H-IC-4558L--1	IC NJM4558L SIP		8.00	U13, U14, U15, U33, U34, U35, U53, U54
48	H-IC-494CN--1	IC 494CN		1.00	IC301
49	H-JAK-MODUL-1	JACK MODULAR	616PCB4D	1.00	CON1
50	H-JAK-R4PG--8	JACK RCA DKJ44104	UP:RED/ DOWM:WHITE	1.00	RCA1
51	H-JW-JUMPW06T	JUMP WIRE 0.6T		199.00	
52	H-LED-HOLDER6	HOLDER LED ASS'Y	TOH-30FOGD1-B(G/R)	1.00	LED
53	H-MFB-104P5T1	CAP/M-FILM 104/63V	BOX FILM 104 TP TYPE	22.00	C16, C17, C20, C38, C99, C146, C147, C246,
54	H-MFB-104P5T1	CAP/M-FILM 104/63V	BOX FILM 104 TP TYPE	0.00	C247, C346, C347, C446, C447, C514, C515, C546,
55	H-MFB-104P5T1	CAP/M-FILM 104/63V	BOX FILM 104 TP TYPE	0.00	C557, CP1, CX101, CX201, CX301, CX401
56	H-MFB-563P5T1	CAP/M-FILM 563/63V	BOX FILM 563 TP TYPE	6.00	C104, C105, C204, C205, C504, C505
57	H-MFB-683P5T1	CAP/M-FILM 683/63V	BOX FILM 683 TP TYPE	4.00	C304, C305, C404, C405
58	H-MOS-44----4	MOSFET FQP50N06	N-CH TO220	8.00	Q24, Q25, Q25A, Q26, Q26A, Q27, Q27A, Q28A
59	H-MYR-103T--2	MYLAR 103 (0.01/50)	TP TYPE "J"	8.00	C5, C5A, C6, C6A, C12, C18, C21, C601
60	H-MYR-222T--2	MYLAR 222(0.0022/50)	TP TYPE "J"	3.00	C7, C7A, C512
61	H-MYR-472T--2	MYLAR 472(0.0047/50)	TP TYPE "J"	1.00	C22
62	H-PBA-9355PP2	MAIN PCB PP5000MA	388x163x1.6t XPC1	1.00	COLOR : ±°Å»»ö

### PART LIST (FP505)

NO	CODE	NAME	STAN	Q'TY	REMARK
63	H-PBS-9355BT2	SPEAKER PCB BT5000SP	161X95X1.6t FR4(1/4)	1.00	
64	H-PBS-9355BT3	SPEAKER PCB BT5000SP	161X95X1.6t FR4(1/4)	1.00	
65	H-PBS-9355UC1	VR PCB BT5000VR-RMT	132x157x1.6tFR4(1/2)	1.00	
66	H-PIN-06PS--2	PIN HEADER 2.54 6PIN	SMRH-254S06T L=3.5mm	2.00	CN9, CN11
67	H-PIN-06PS--2	PIN HEADER 2.54 6PIN	SMRH-254S06T L=3.5mm	2.00	CN12, CN13
68	H-PTRC-12---1	RFC COIL BAR	5UH/L 8x25 2/12	2.00	RFC1, RFC2
69	H-PTTO-36--54	P.T TOROIDE 36mm	UT450N 5T/10T	1.00	T2
70	H-PTTO-36--59	P.T TOROIDE 36mm	GTA 5000 6T/18T	1.00	T1
71	H-R12-220---1	RESISTOR 1/2W 220		1.00	R557
72	H-R12-27----1	RESISTOR 1/2W 27		2.00	R20, R21
73	H-R12-4.7---1	RESISTOR 1/2W 4.7		2.00	R360, R460
74	H-R12-4.7---3	RESISTOR 1/2W 4.7	R-TYPE	2.00	R160, R260
75	H-R14-13----1	RESISTOR 1/4W 1K		5.00	R3, R3A, R4, R4A, R99
76	H-R14-220---1	RESISTOR 1/4W 220		4.00	R157, R257, R357, R457
77	H-R14-27----1	RESISTOR 1/4W 27		2.00	R20A, R21A
78	H-R14-47----1	RESISTOR 1/4W 47		8.00	R6, R6A, R7, R7A, R10, R11, R11A, R12A
79	H-R18-100---1	RESISTOR 1/8W 100		20.00	R143, R144, R145, R146, R243, R244, R245, R246,
80	H-R18-100---1	RESISTOR 1/8W 100		0.00	R343, R344, R345, R346, R443, R444, R445, R446,
81	H-R18-100---1	RESISTOR 1/8W 100		0.00	R543, R544, R545, R546
82	H-R18-100---1	RESISTOR 1/8W 100		8.00	R114, R117, R214, R217, R314, R317, R414, R417
83	H-R18-1003--1	RESISTOR 1/8W 100K		7.00	R36, R601, R602, R603, R604, R605, RX1
84	H-R18-103---1	RESISTOR 1/8W 10K		23.00	R25, R26, R28, R29, R30, R31, R37, R101,
85	H-R18-103---1	RESISTOR 1/8W 10K		0.00	R142, R166, R201, R242, R266, R301, R342, R366,
86	H-R18-103---1	RESISTOR 1/8W 10K		0.00	R401, R442, R466, R506, R542, R566, RX2
87	H-R18-103---1	RESISTOR 1/8W 10K		10.00	R112, R113, R212, R213, R312, R313, R412, R413,
88	H-R18-103---1	RESISTOR 1/8W 10K		0.00	R512, R513
89	H-R18-112---1	RESISTOR 1/8W 1.1K		3.00	R107, R307, R507
90	H-R18-113---1	RESISTOR 1/8W 11K		4.00	R106, R206, R306, R406
91	H-R18-123---1	RESISTOR 1/8W 12K		4.00	R153, R253, R353, R453
92	H-R18-13----1	RESISTOR 1/8W 1K		2.00	RL1, RL2 (PCB μC, 1U, 6L, 1A, 6A, 10A)
93	H-R18-13----1	RESISTOR 1/8W 1K		25.00	R1, R2, R51, R52, R104, R149, R150, R154,

### PART LIST (FP505)

NO	CODE	NAME	STAN	Q'TY	REMARK
94	H-R18-13----1	RESISTOR 1/8W 1K		0.00	R204, R249, R250, R254, R304, R349, R350, R354,
95	H-R18-13----1	RESISTOR 1/8W 1K		0.00	R404, R449, R450, R454, R522, R523, R549, R550,
96	H-R18-13----1	RESISTOR 1/8W 1K		0.00	R554
97	H-R18-153---1	RESISTOR 1/8W 15K		5.00	R109, R209, R309, R409, R509
98	H-R18-16----1	RESISTOR 1/8W 1M		1.00	R35
99	H-R18-163---1	RESISTOR 1/8W 16K		1.00	R32
100	H-R18-183---1	RESISTOR 1/8W 18K		1.00	R553
101	H-R18-184---1	RESISTOR 1/8W 1.8K		4.00	R156, R256, R356, R456
102	H-R18-223---1	RESISTOR 1/8W 22K		4.00	R102, R202, R302, R402
103	H-R18-223---1	RESISTOR 1/8W 22K		2.00	R515, R516
104	H-R18-224---1	RESISTOR 1/8W 2.2K		13.00	R33, R34, R141, R164, R241, R264, R341, R364,
105	H-R18-224---1	RESISTOR 1/8W 2.2K		0.00	R441, R464, R541, R556, R564
106	H-R18-243---1	RESISTOR 1/8W 24K		1.00	R520
107	H-R18-2703--1	RESISTOR 1/8W 270K		2.00	R208, R408
108	H-R18-273---1	RESISTOR 1/8W 27K		3.00	R108, R308, R607
109	H-R18-274---1	RESISTOR 1/8W 2.7K		5.00	R111, R211, R311, R411, R511
110	H-R18-33----1	RESISTOR 1/8W 3K		1.00	R38
111	H-R18-333---1	RESISTOR 1/8W 33K		3.00	R53, R54, R508
112	H-R18-393---1	RESISTOR 1/8W 39K		1.00	R606
113	H-R18-4703--1	RESISTOR 1/8W 470K		1.00	R608
114	H-R18-47----1	RESISTOR 1/8W 47		10.00	R151, R152, R251, R252, R351, R352, R451, R452,
115	H-R18-47----1	RESISTOR 1/8W 47		0.00	R551, R552
116	H-R18-473---1	RESISTOR 1/8W 47K		3.00	R521, R524, R526
117	H-R18-474---1	RESISTOR 1/8W 4.7K		6.00	R27, R155, R255, R355, R455, R555
118	H-R18-514---1	RESISTOR 1/8W 5.1K		4.00	R103, R203, R303, R403
119	H-R18-680---1	RESISTOR 1/8W 680		11.00	R105, R162, R205, R262, R305, R362, R405, R462,
120	H-R18-680---1	RESISTOR 1/8W 680		0.00	R505, R562, R562-1
121	H-R18-683---1	RESISTOR 1/8W 68K		1.00	R525
122	H-R18-684---1	RESISTOR 1/8W 6.8K		5.00	R110, R210, R310, R410, R510
123	H-R18-824---1	RESISTOR 1/8W 8.2K		15.00	R140, R147, R148, R240, R247, R248, R340, R347,
124	H-R18-824---1	RESISTOR 1/8W 8.2K		0.00	R348, R440, R447, R448, R540, R547, R548

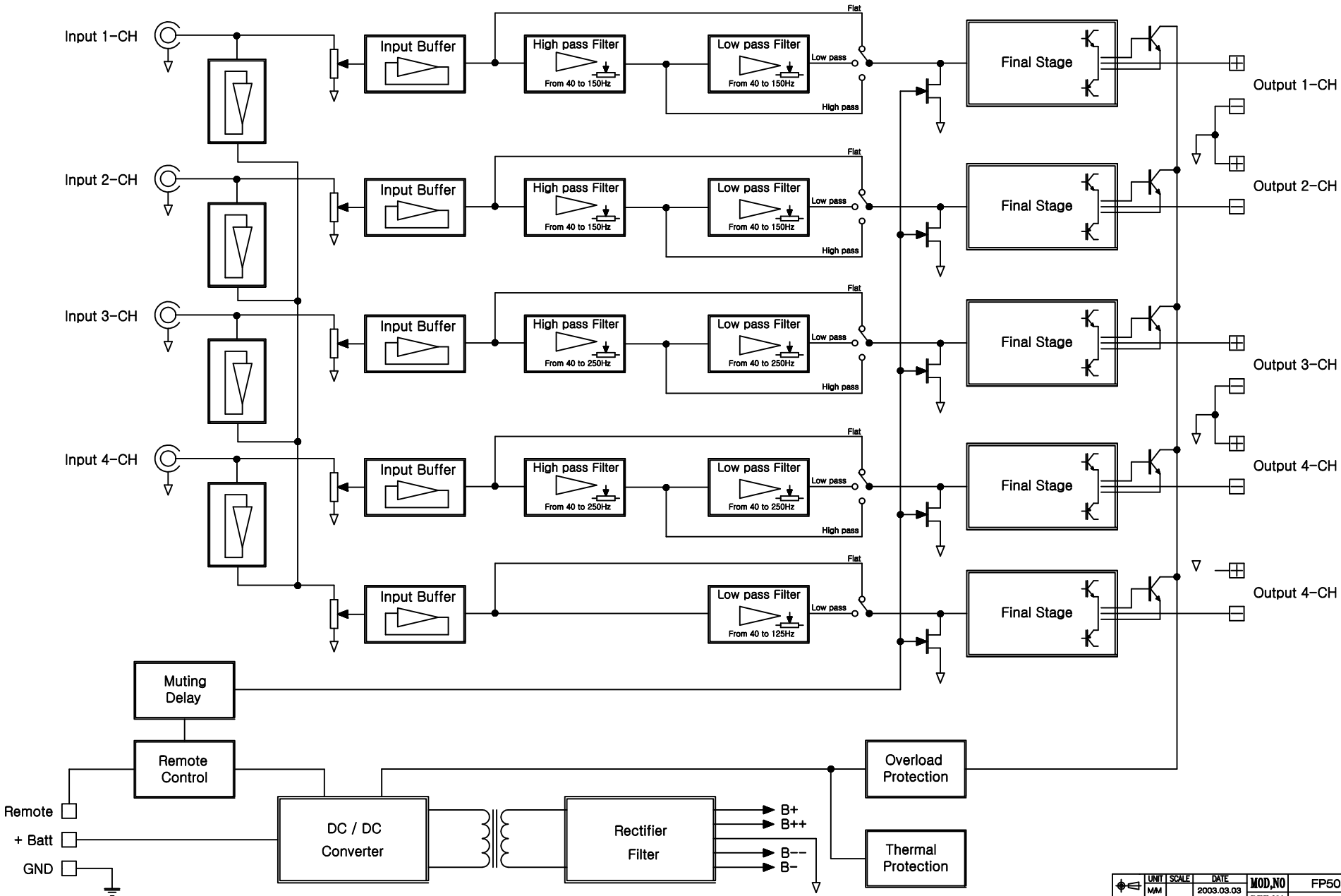
### PART LIST (FP505)

NO	CODE	NAME	STAN	Q'TY	REMARK
125	H-R18F-194--1	RESISTOR F1/8W 19K		4.00	R115, R116, R215, R216
126	H-R18F-9092-1	RESISTOR F1/8W 9.09K		4.00	R315, R316, R317, R318
127	H-R1WM-100--2	RESISTOR 1W 100	M TYPE	2.00	R56, R58
128	H-R1WM-22---2	RESISTOR 1W 22	M TYPE	2.00	R22, R22A
129	H-R1WM-472--2	RESISTOR MET 1W4.7	M TYPE	1.00	R560
130	H-R5WMFR015-1	RESISTOR MFR 5W 0.15	R-TYPE	12.00	R158, R159, R258, R259, R358, R359, R458, R459,
131	H-R5WMFR015-1	RESISTOR MFR 5W 0.15	R-TYPE	0.00	R558, R558-1, R559, R559-1
132	H-STRG-10PG-1	TERMINAL SCREW	DK102314 10P GOLD	1.00	TER1
133	H-STRG-3PG-13	TERMINAL SCREW	DKPT03300 3P GOLD	1.00	TER2
134	H-SWS-2203--1	SW SL SK22J03G6	2C2P 6MM	1.00	SW1
135	H-SWS-2203--1	SW SL SK22J03G6	2C2P 6MM	1.00	SW51
136	H-SWS-2251--1	SW PUSH SPS-2251P		1.00	SW52
137	H-SWS-2301--3	SW SL SK23E01G6	2C3P 6MM	2.00	SW11, SW31
138	H-THM-150K--2	THERMISTOR 150K	"LUG"	1.00	TH1
139	H-TR-1266GT-1	TR KTA1266GR	TP TYPE	1.00	Q17
140	H-TR-1266YT-1	TR KTA1266Y	TP TYPE	18.00	Q1, Q1A, Q2, Q2A, Q102, Q104, Q105, Q202,
141	H-TR-1266YT-1	TR KTA1266Y	TP TYPE	0.00	Q204, Q205, Q302, Q304, Q305, Q402, Q404, Q405,
142	H-TR-1266YT-1	TR KTA1266Y	TP TYPE	0.00	Q502, Q504
143	H-TR-1367Y--1	TR KTB 1367Y		1.00	Q509
144	H-TR-2059Y--1	TR KTD 2059Y	KTD 2059Y	1.00	Q508
145	H-TR-2316YT-1	TR KSC2316Y	TP TYPE	5.00	Q108, Q208, Q308, Q408, Q506
146	H-TR-3112B--1	TR KTC3112B	KTC 3112B	5.00	Q107, Q207, Q307, Q407, Q507
147	H-TR-3198YT-1	TR KTC3198Y	TP TYPE	20.00	Q101, Q103, Q106, Q15, Q121, Q201, Q203, Q206,
148	H-TR-3198YT-1	TR KTC3198Y	TP TYPE	0.00	Q221, Q301, Q303, Q306, Q321, Q401, Q403, Q406,
149	H-TR-3198YT-1	TR KTC3198Y	TP TYPE	0.00	Q421, Q501, Q503, Q521
150	H-TR-35C----1	TR TIP35C		2.00	Q510, Q512
151	H-TR-36C----1	TR TIP36C		2.00	Q511, Q513
152	H-TR-688----1	TR KTB688-0		4.00	Q111, Q211, Q311, Q411
153	H-TR-718----1	TR KTD718-0		4.00	Q110, Q210, Q310, Q410
154	H-TR-916YT--1	TR KSA916Y	TP TYPE	6.00	Q16, Q109, Q209, Q309, Q409, Q505
155	H-TR-K30AT--1	TR K30A	TP TYPE	6.00	Q601, Q602, Q603, Q604, Q605, Q606

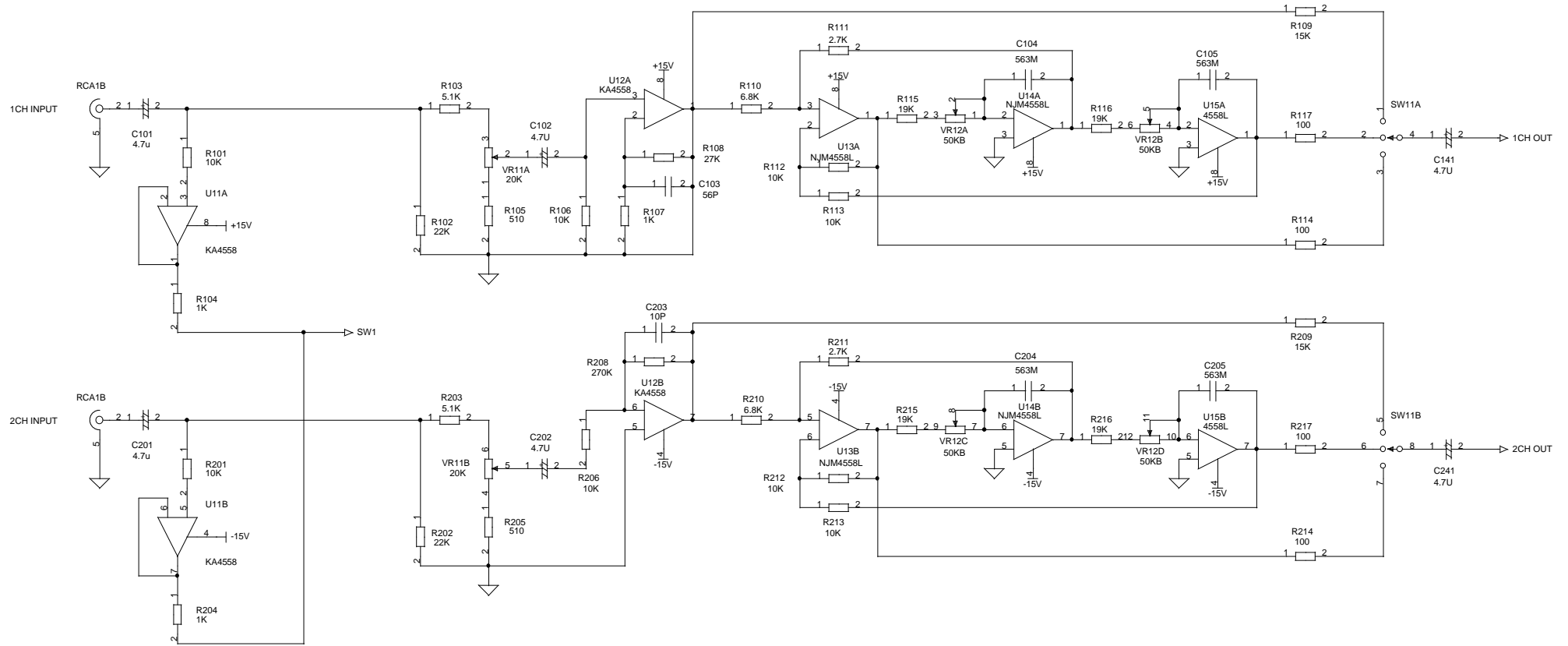
**PART LIST (FP505)**

NO	CODE	NAME	STAN	Q'TY	REMARK
156	H-VR953B20--1	RTVR 3B20K	RV095GBC015RS3B20K	3.00	VR11, VR31, VR51
157	H-VR953B50--1	RTVR 3B50K	RV095GBC015RS3B50K	1.00	VR6
158	H-VR9543B50-1	RTVR 3B50K	RV0954GBCO15RS3B50K	2.00	VR12, VR32
159	H-W16-RT080-1	RING TERMINAL 10mm	0.16/11 BK 80 3.5	1.00	CH_GND
160	H-W4P-BC050-1	4P+4P B/C 50MM	4P LAL0640-04	1.00	CN2
161	H-W6P-BC050-2	6P+6P B/C 50mm	XT2705 W/LAL0640-06	1.00	CN4
162	H-W9P-BC050-1	9P+9P B/C 50MM	9P LAL0640-09	1.00	CN3

# FP505 Block Diagram



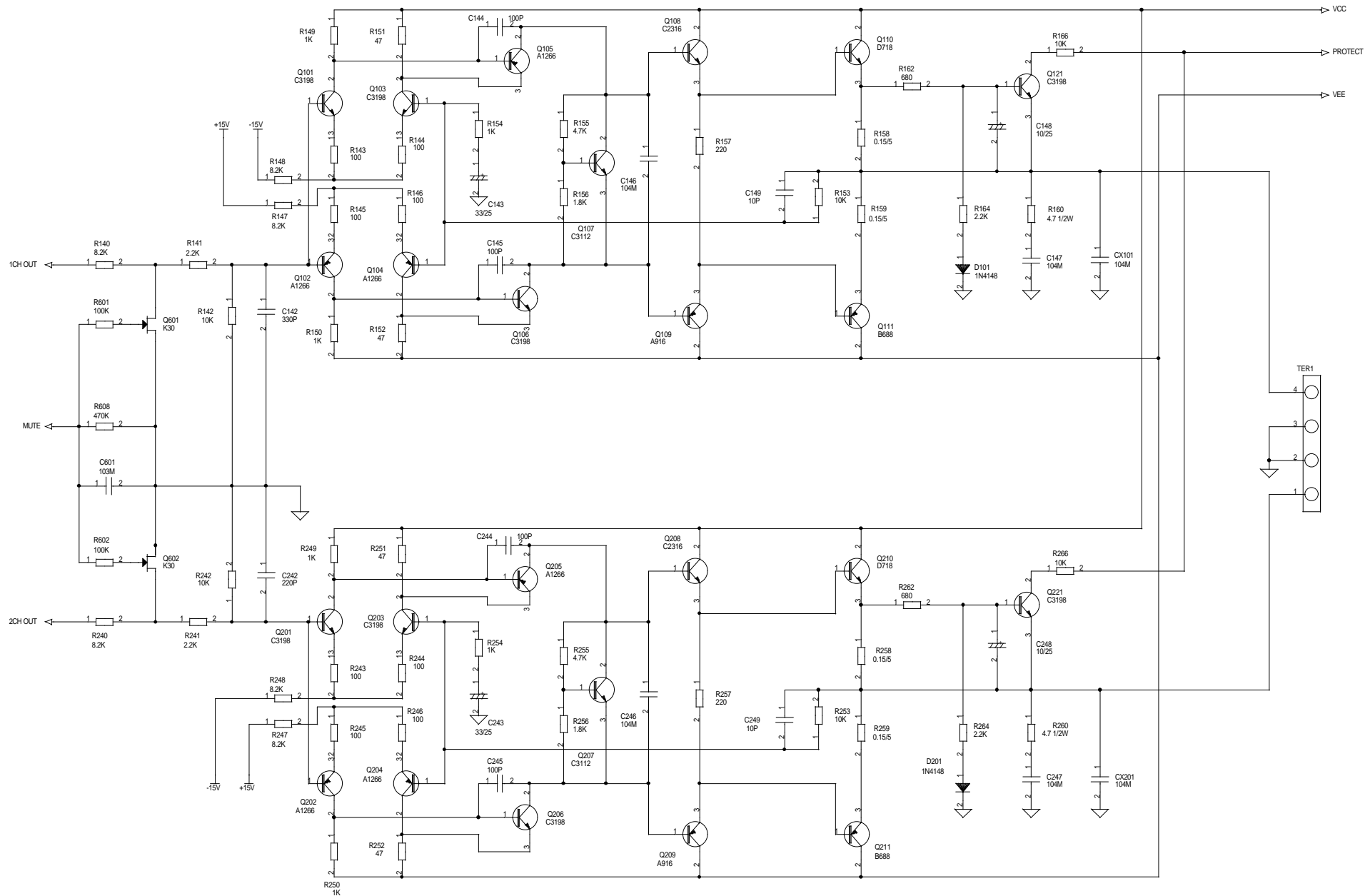
UNIT	SCALE	DATE	MOD,NO	FP505
MM		2003.03.03	REF,NO	
DRAWN	DESIGN	CHECK	APPROVED	NAME BLOCK DIAGRAM
				DRA,NO



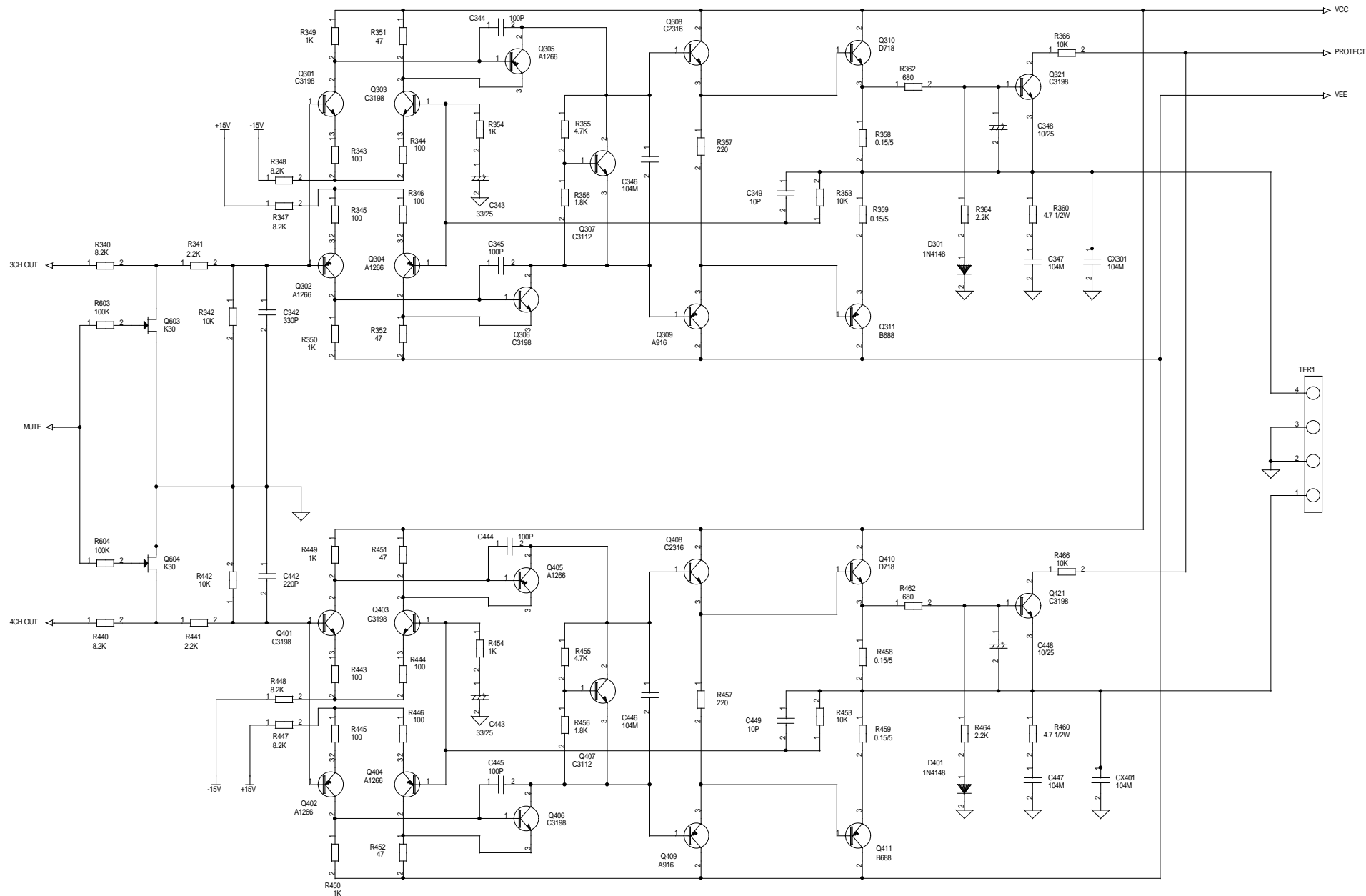
FUSION		
Title		
FP505-I1		
Size	Document Number	Rev
A3	D-E-PP9505I10	
Date:	Monday, March 03, 2003	Sheet 7 of 1



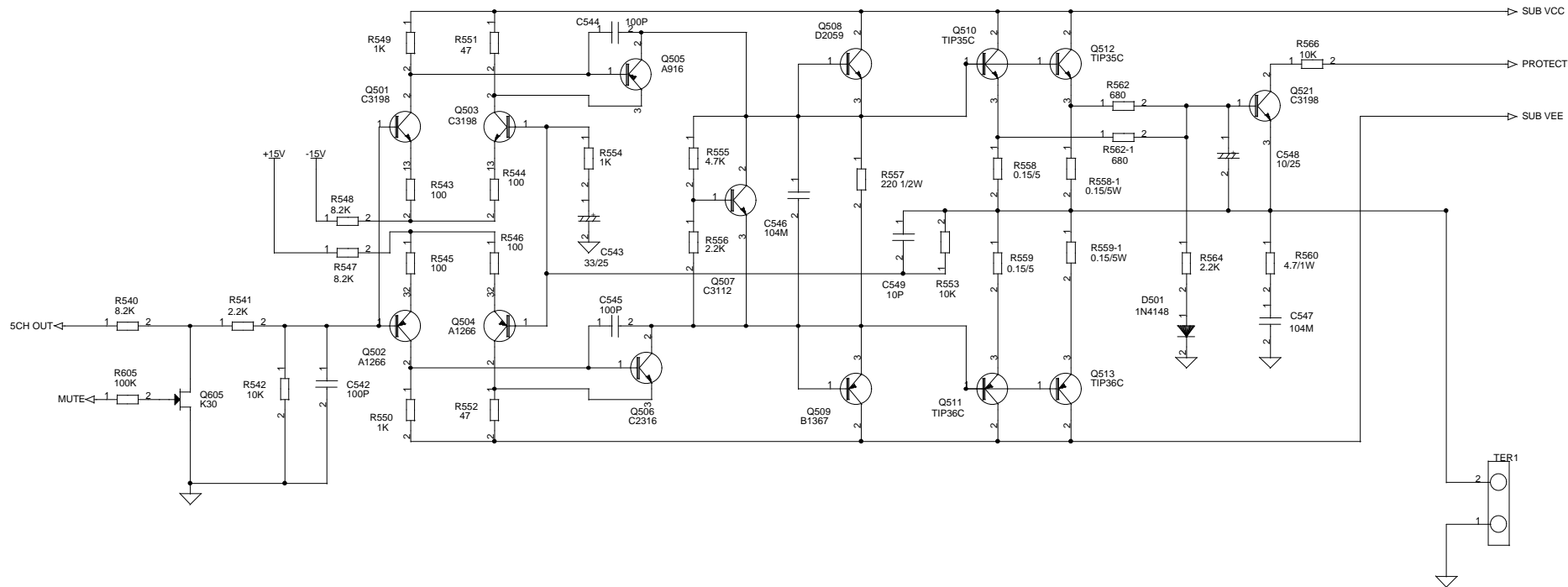




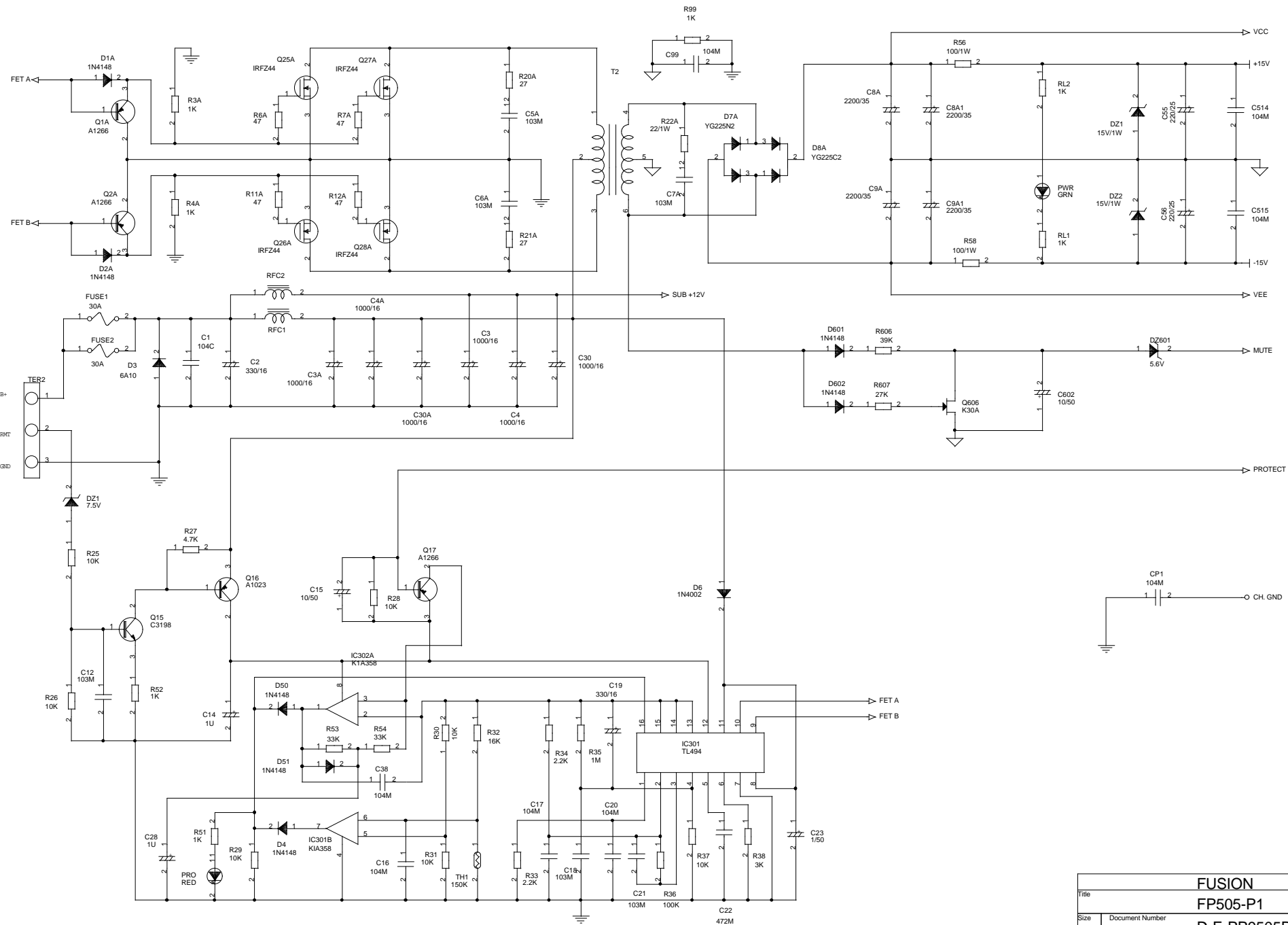
FUSION			
FP505-A1			
Size	Document Number	D-E-PP9505A10	
Custom			Rev
Date:	Monday, March 03, 2003	Sheet	7 of 3



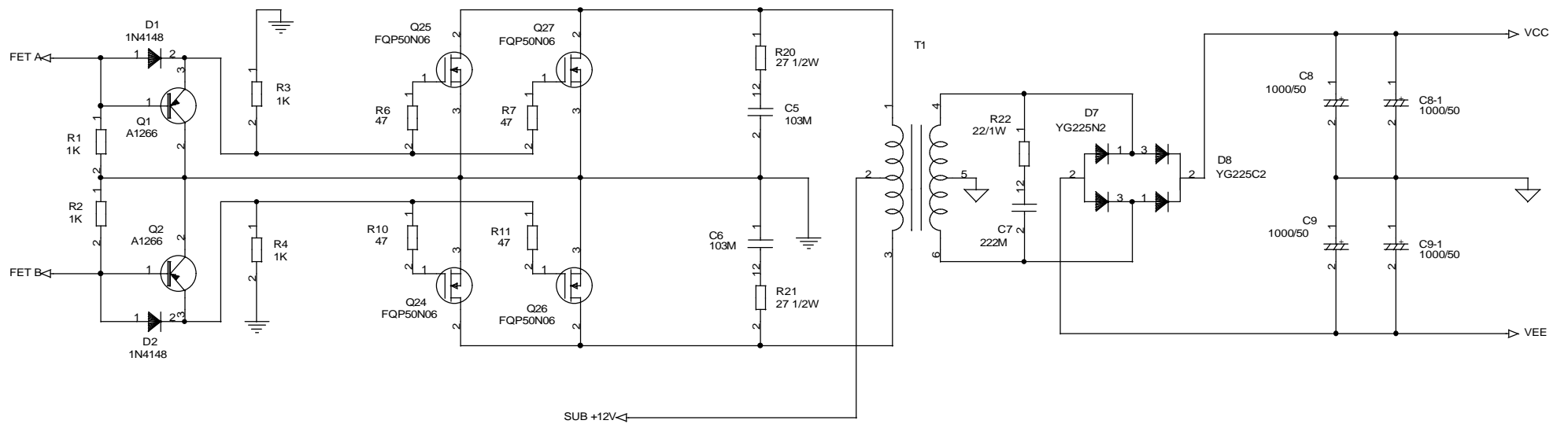
FUSION			
Title			
FP505-A2			
Size	Document Number	D-E-PP9505A20	
Custom			Rev
Date:	Monday, March 03, 2003	Sheet	7 of 4



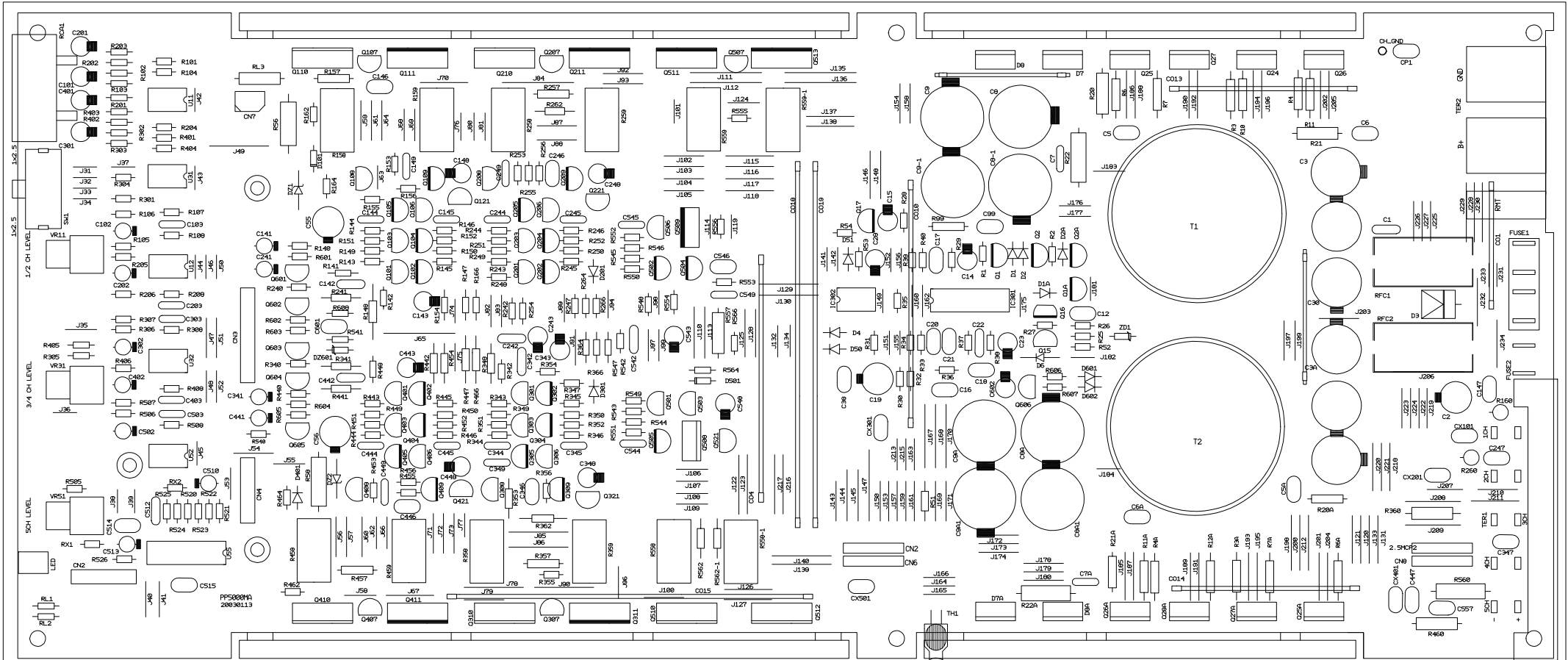
FUSION			
Title			
FP505-A3			
Size	Document Number		Rev
A3	D-E-PP9505A30		
Date:	Monday, March 03, 2003	Sheet	7 of 5



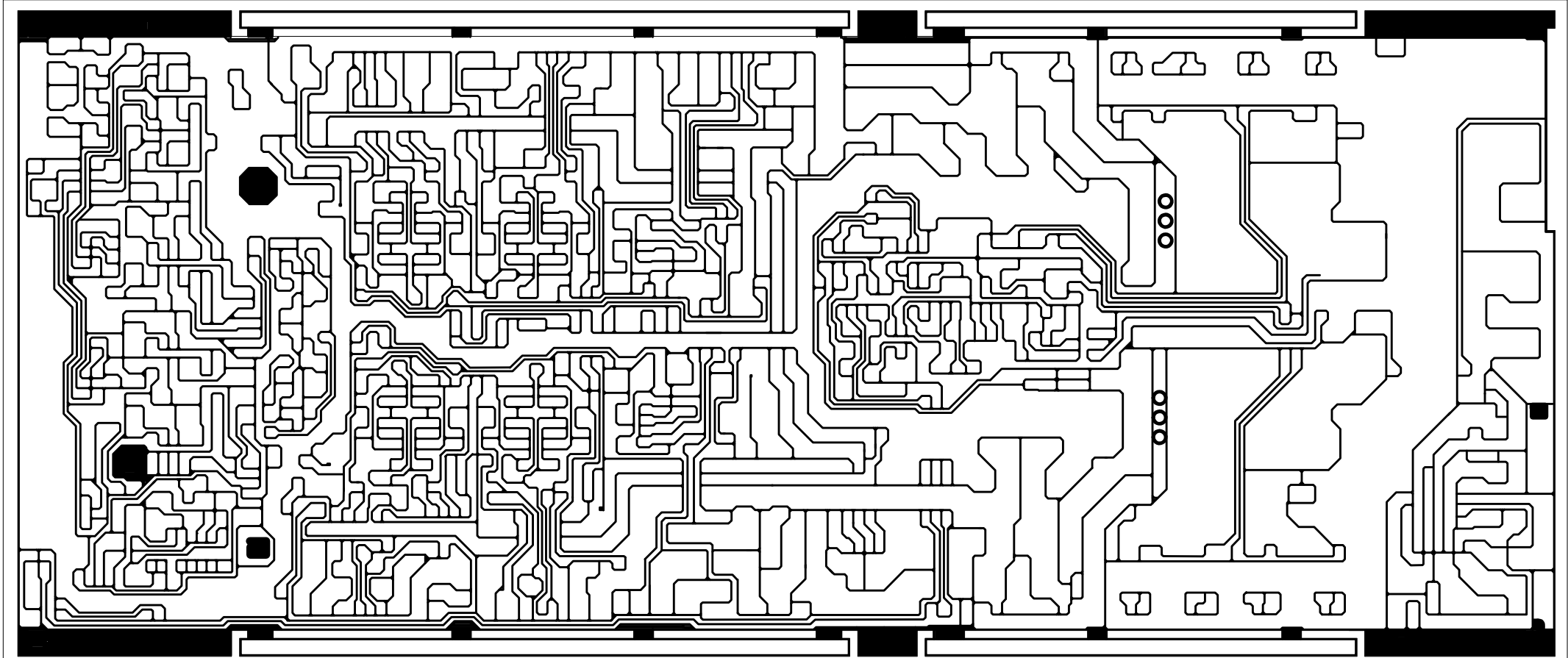
FUSION			
Title			
FP505-P1			
Size	Document Number	D-E-PP9505P10	
Custom			
Date:	Monday, March 03, 2003	Sheet	7 of 6



FUSION			
FP505-P2			
Size	Document Number	D-E-PP9505P20	
Custom			
Date:	Monday, March 03, 2003	Sheet	7 of 7



FUSION		TITLE PCB BOARD FP-505	
CHECKED DATE	APPROVED DATE	SIZE NUMBER A3	REV 1
		D-B-PP9505MTS00	
		DATE : 2003-03-03	
		DRAWN BY : C,Y WON	
		FILE NAME :	
		SHEET : 1/1	



FUSION		TITLE PCB BOARD FP-505	
CHECKED DATE	APPROVED DATE	SIZE NUMBER A3	REV 1
		DATE : 2003-03-03	DRAWN BY : C,Y WON
		FILE NAME :	SHEET : 1/1



CN11

BT5000SP  
20020215

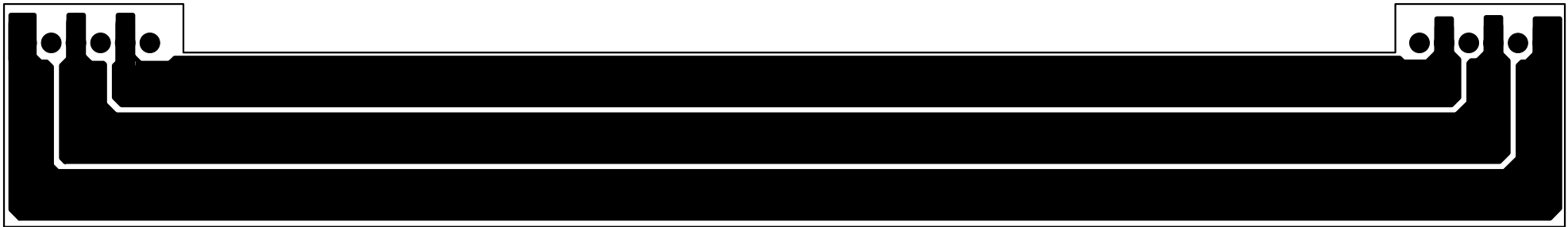
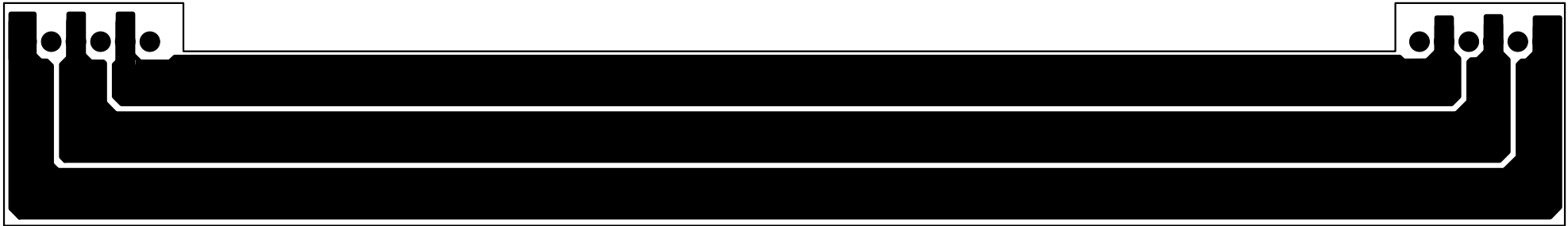
CN9

CN12

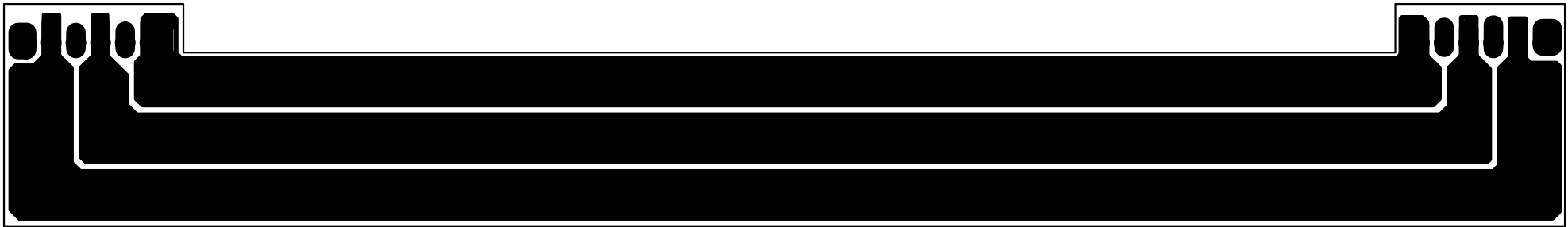
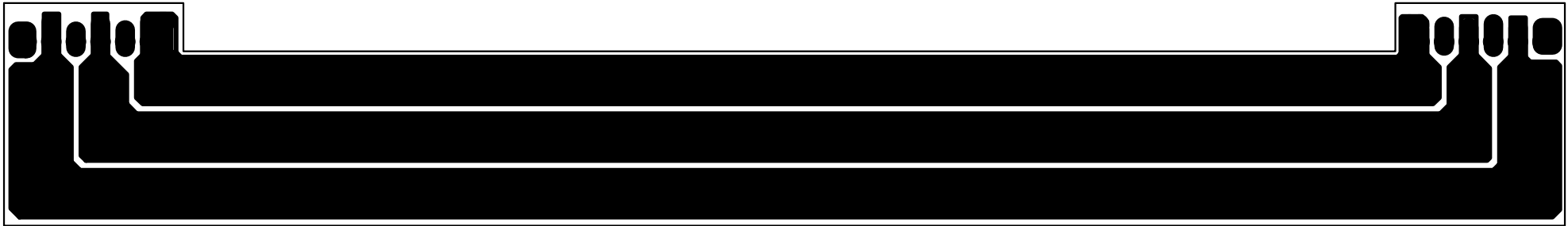
BT5000SP  
20020215

CN13

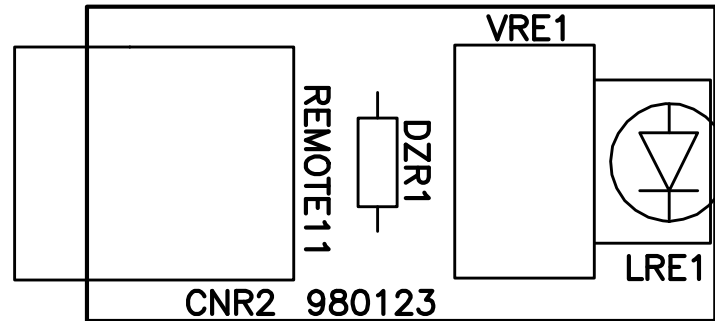
FUSION			TITLE PCB BOARD FP505-SP		
CHECKED DATE		APPROVED DATE		SIZE A3	NUMBER D-B-PP9505STS00
			DATE:2003-03-03		REV 0
			DRAWN BY : C.Y.WON		
			FILE NAME		SHEET : 1 / 1



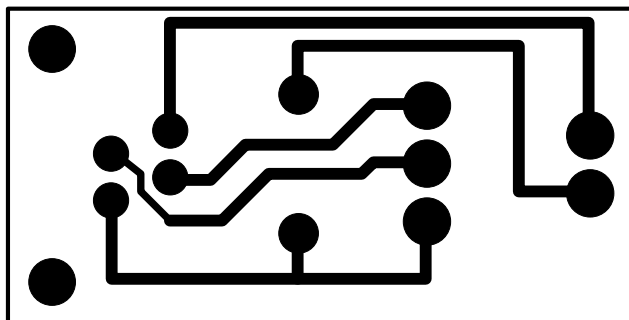
FUSION			TITLE PCB BOARD FP505-SP		
CHECKED DATE		APPROVED DATE	SIZE A3	NUMBER D-B-PP9505STP00	REV O
			DATE:2003-03-03		DRAWN BY : C.Y.WON
			FILE NAME		SHEET : 1 / 1



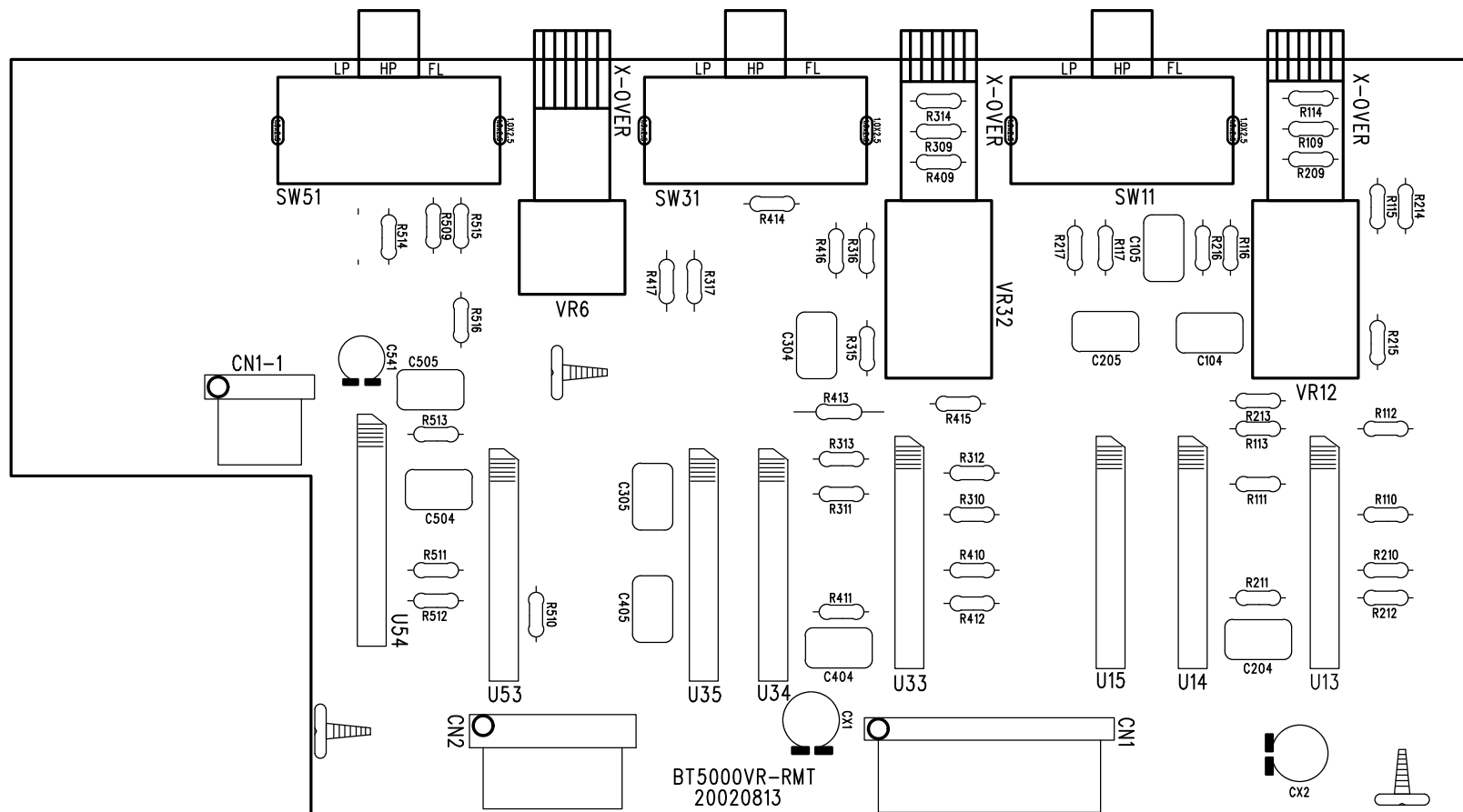
FUSION			TITLE PCB BOARD FP505-SP		
CHECKED DATE		APPROVED DATE	SIZE A3	NUMBER D-B-PP9505SBP00	REV O
			DATE:2003-03-03		DRAWN BY : C.Y.WON
			FILE NAME		SHEET : 1 / 1



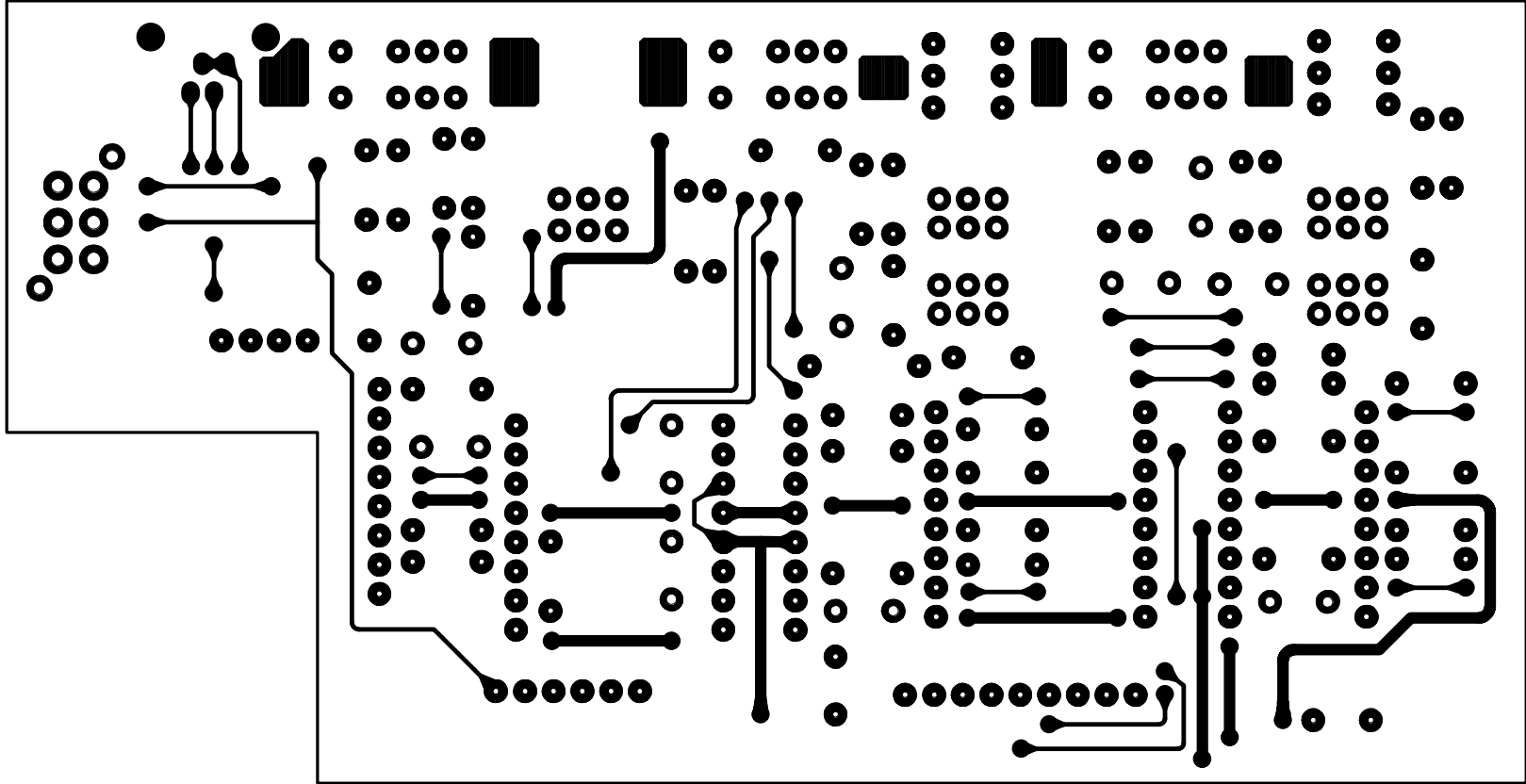
FUSION		TITLE PCB BOARD FP505-EXT		
CHECKED DATE	APPROVED DATE	SIZE A4	NUMBER D-B-PP9505XTS00	REV 0
		DATE:2003-03-03		DRAWN BY:C.Y.WON
		FILE NAME:		SHEET : 1/1



FUSION		TITLE PCB BOARD FP505-EXT		
CHECKED DATE		APPROVED DATE		SIZE A4
			NUMBER D-B-PP9505XBP00	
			REV 0	
			DATE:2003-03-03	DRAWN BY:C.Y.WON
			FILE NAME:	SHEET : 1 / 1



FUSION		TITLE PCB BOARD FP505VR-RMT		
CHECKED DATE	APPROVED DATE	SIZE A4	NUMBER D-B-PP9505VTS00	REV 0
		DATE:2003-03-03		DRAWN BY:C.Y.WON
		FILE NAME:		SHEET : 1 / 1

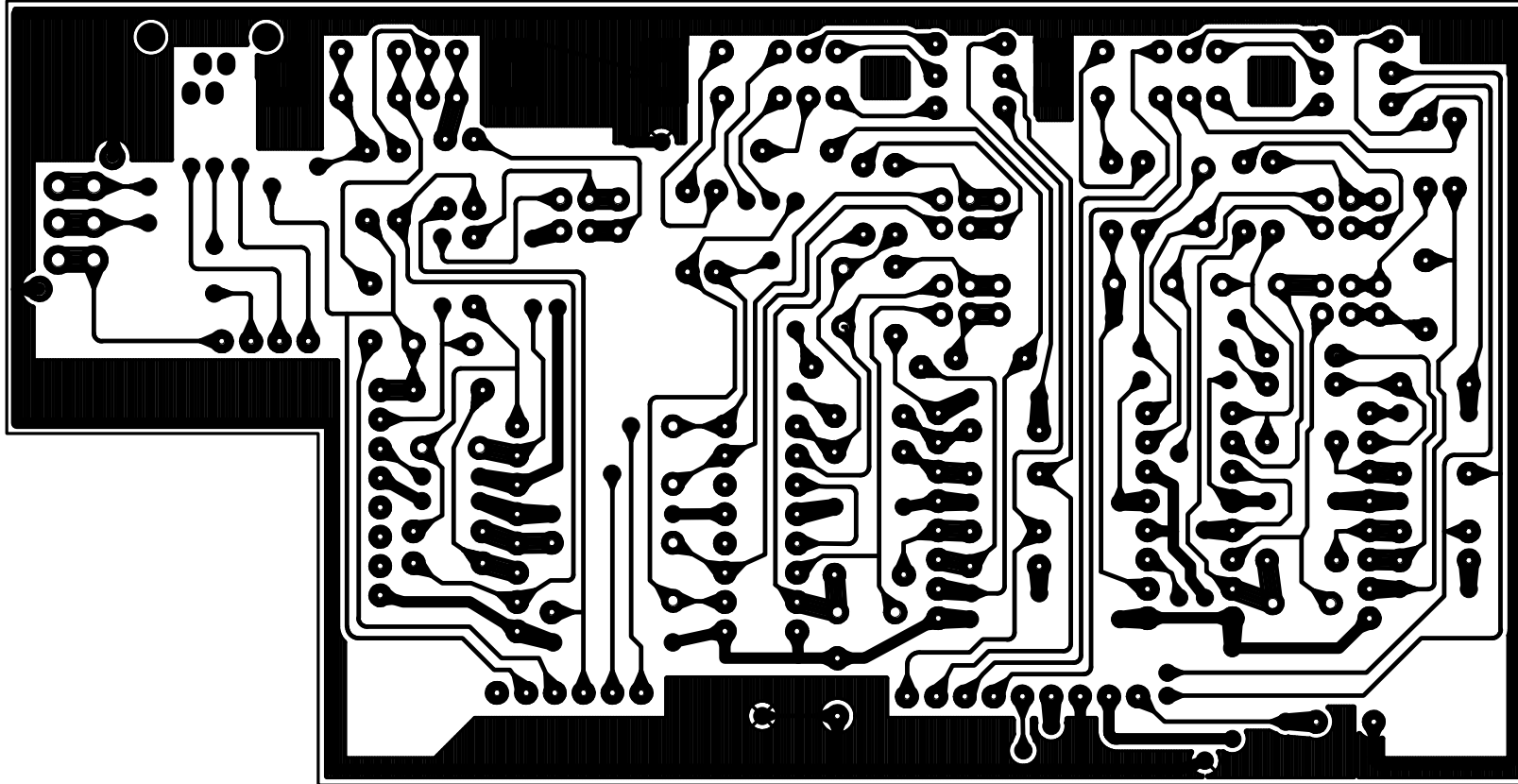


FUSION		TITLE PCB BOARD FP505VR-RMT		
CHECKED DATE	APPROVED DATE	SIZE A4	NUMBER D-B-PP9505VTP00	REV 0
		DATE:2003-03-03		DRAWN BY:C.Y.WON
		FILE NAME:		SHEET : 1 / 1



FUSION		TITLE PCB BOARD FP505VR-RMT		
CHECKED DATE		APPROVED DATE		SIZE A4
				NUMBER D-B-PP9505VBS00
				REV 0
		DATE:2003-03-03		DRAWN BY:C.Y.WON
		FILE NAME:		SHEET : 1 / 1





FUSION		TITLE PCB BOARD FP505VR-RMT		
CHECKED DATE	APPROVED DATE	SIZE A4	NUMBER D-B-PP9505VBP00	REV 0
			DATE:2003-03-03	DRAWN BY:C.Y.WON
			FILE NAME:	SHEET : 1 / 1