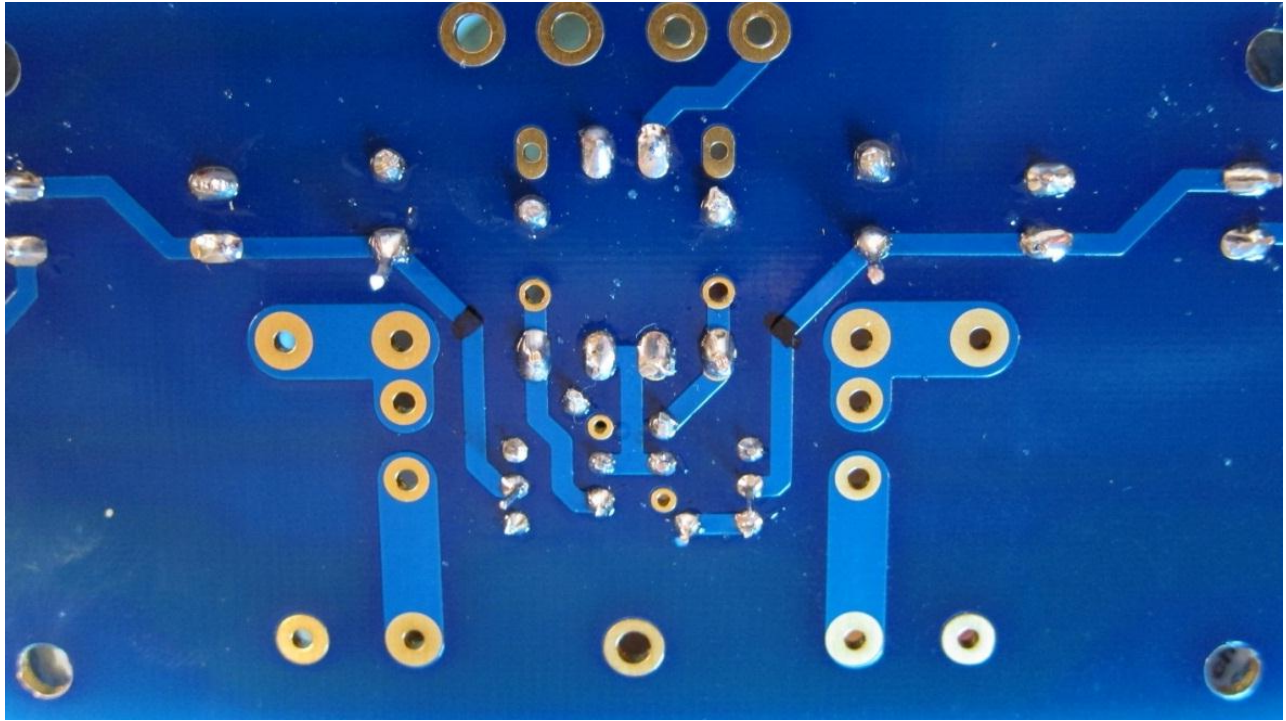
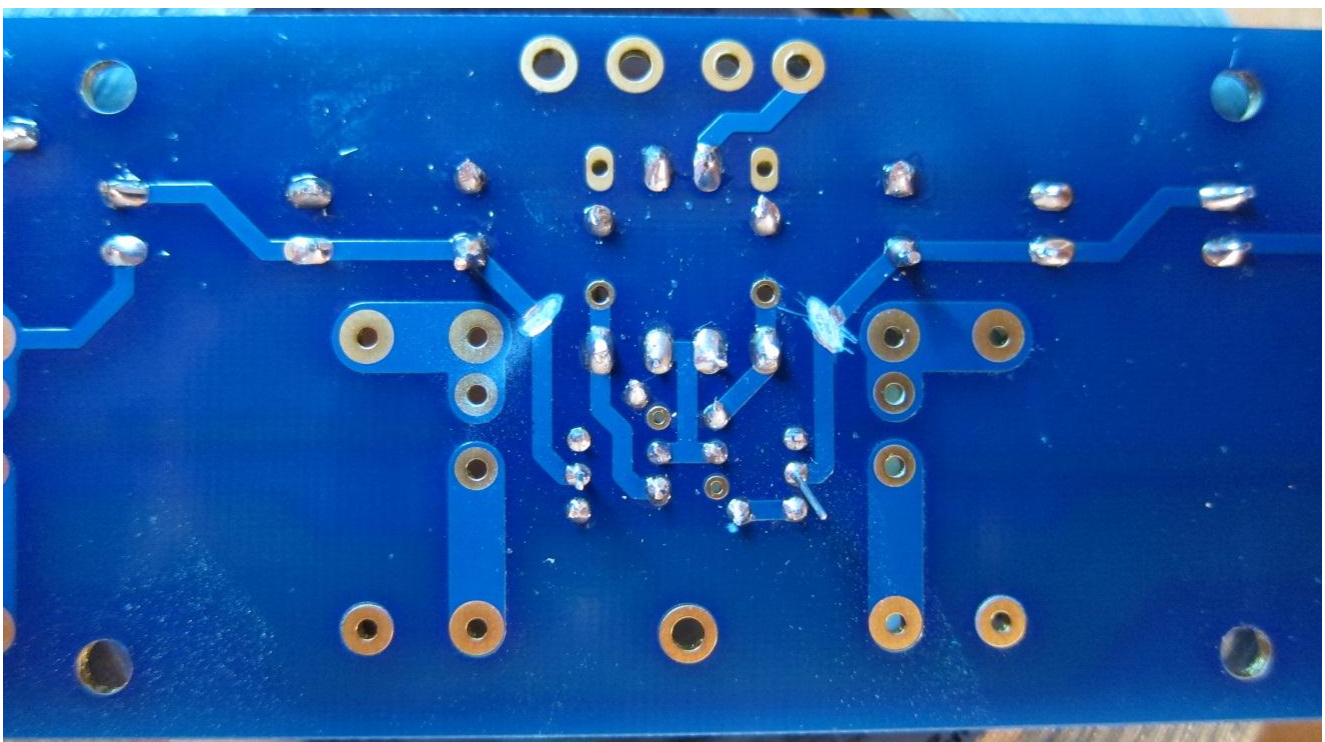


As I noted earlier, we needed to modify the amplifier boards so we could insert 475 ohm resistors (R29 & R30 on the previous schematic) before the base of the cascoding transistors. Thus, on the underside of the board we needed to score the board to break the circuit to the base of Q101 and Q102 so we could cross the divides with resistors.



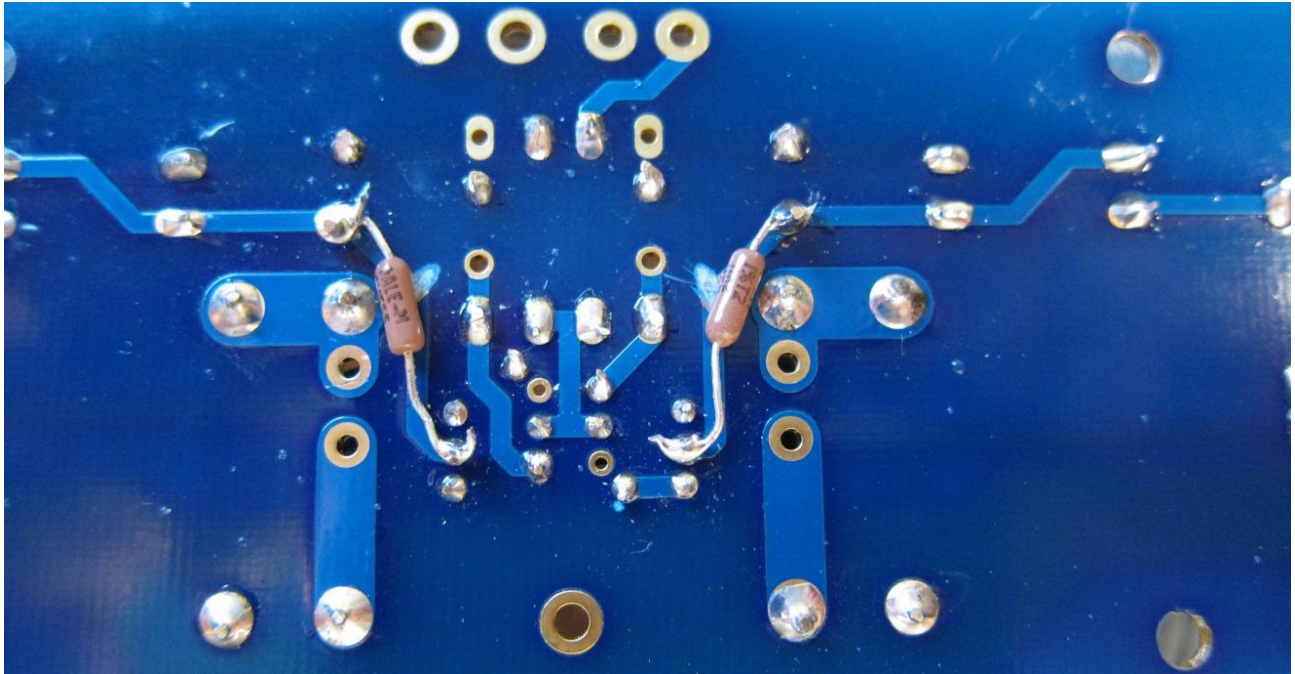
The black marks note the two areas to score. If you look closely, you can see that we left the leads from the bases of the cascoding transistors and from the 220 uF filter capacitors long so it would be easy to install the resistors on the underside. This is seen more easily in the photo below.

Below is the board after scoring in the two locations that had been marked in black.

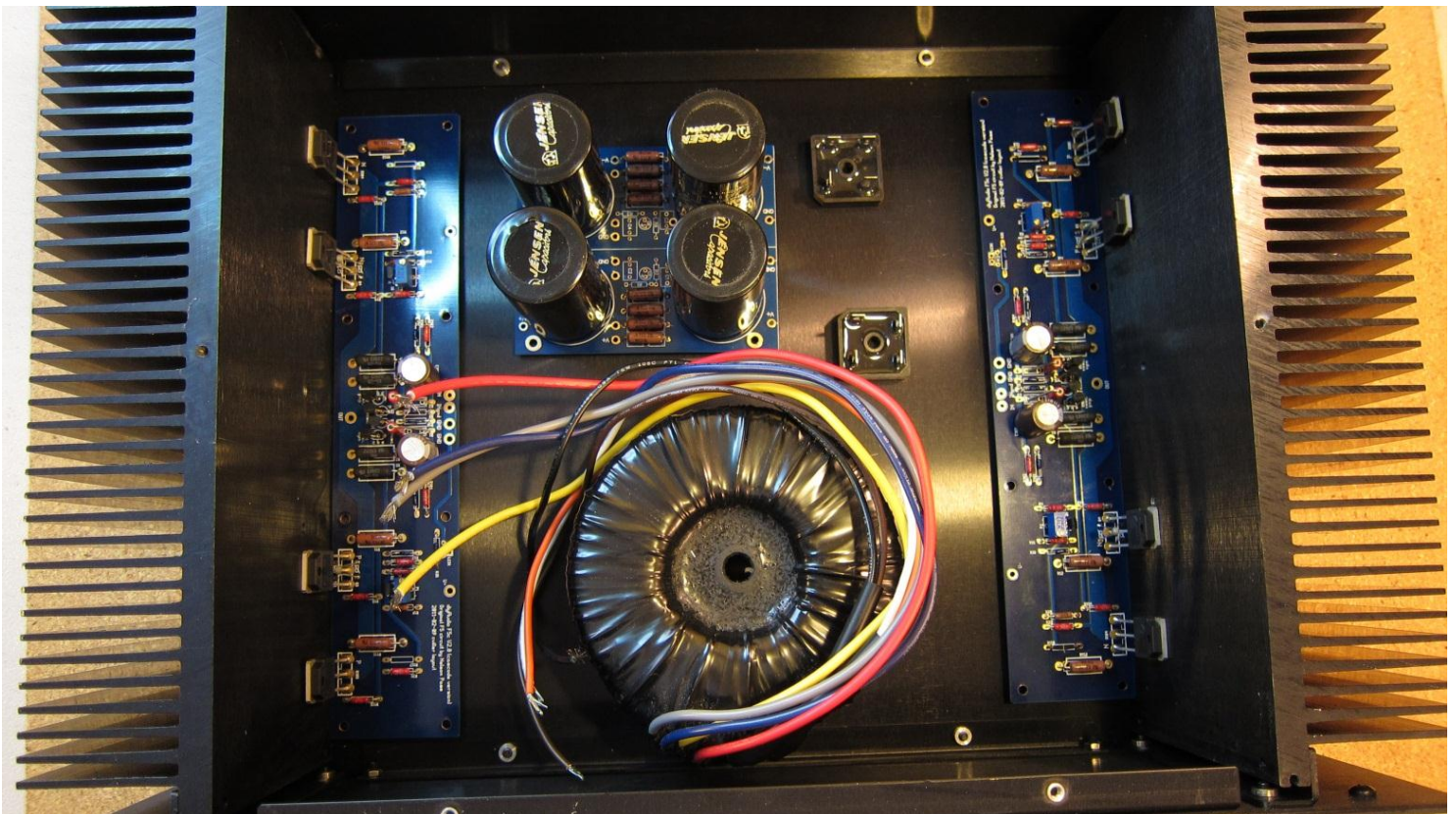




Now to install the resistors, we simply soldered them to the long leads and cut the leads short.



Now we were beginning to consider how we want to lay out the boards, rectifiers, transformer, etc., in the case. At this point we simply preliminarily set these items in the opened case to see how they might fit and took this shot. Sorry for the unusual lighting, though it does have sort of a contemporary look.



Continued in part 5.