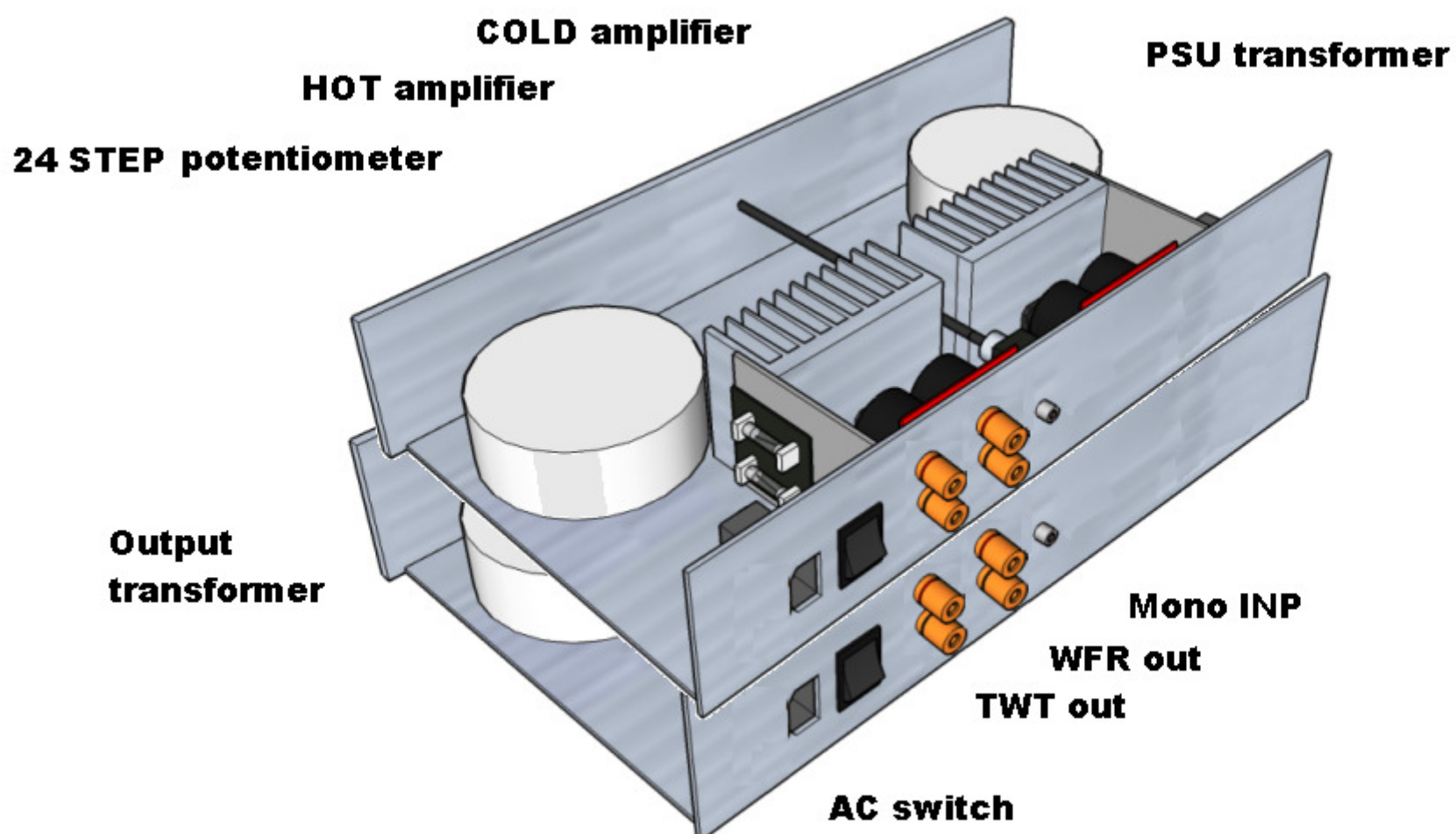
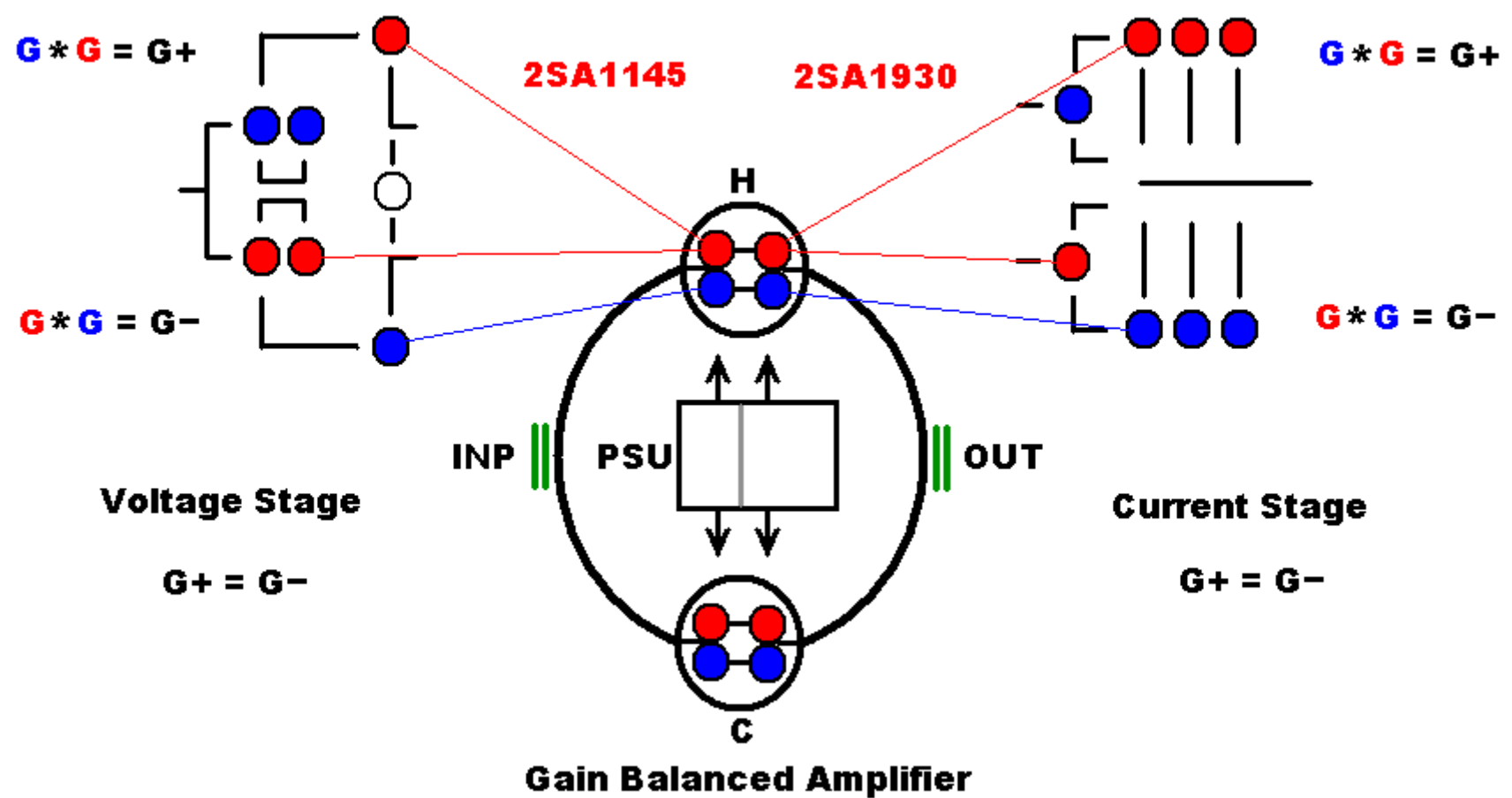


HIGH-END POWER AMP EXCELSUS

The High-End Amplifier named EXCELSUS is made in Italy.
The output power of this final amplifier is somewhat on the modest side,
but the quality is outstanding – and it is more than adequate for filling
an average living room with an impressive sound image.



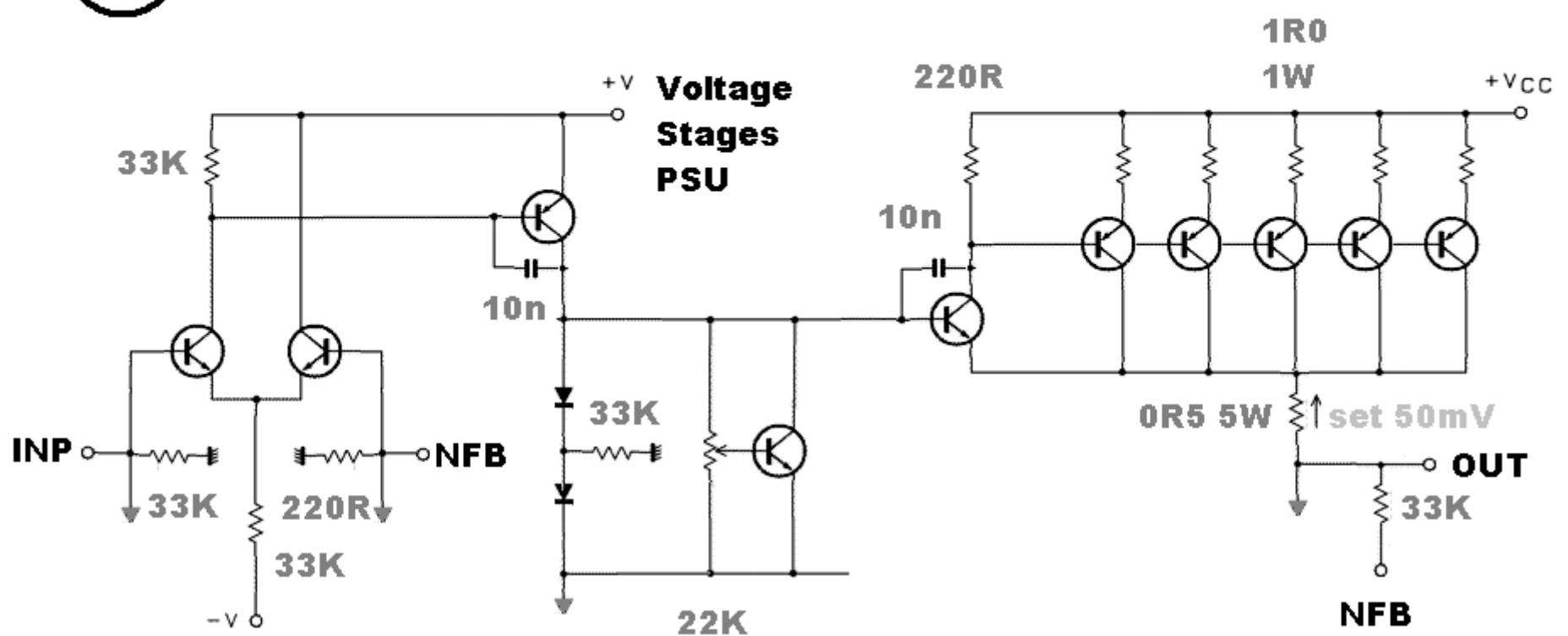
Matching final amplifier in an identical Gain between two rails
with a special method build for balanced system



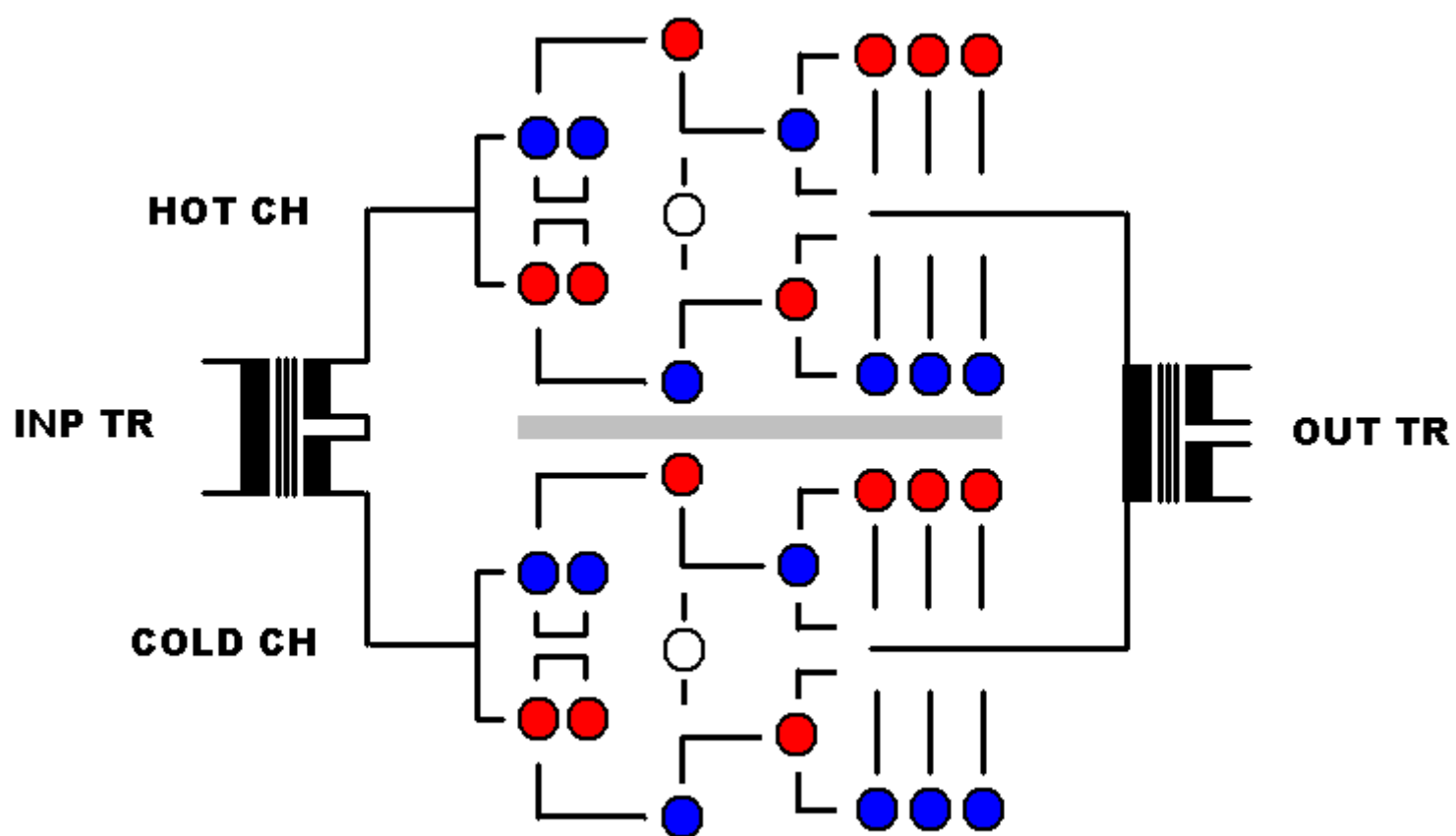
This amplifier is thus primarily suitable for people who like to listen to music at a 'civilised' volume and are very demanding with regard to reproduction quality.



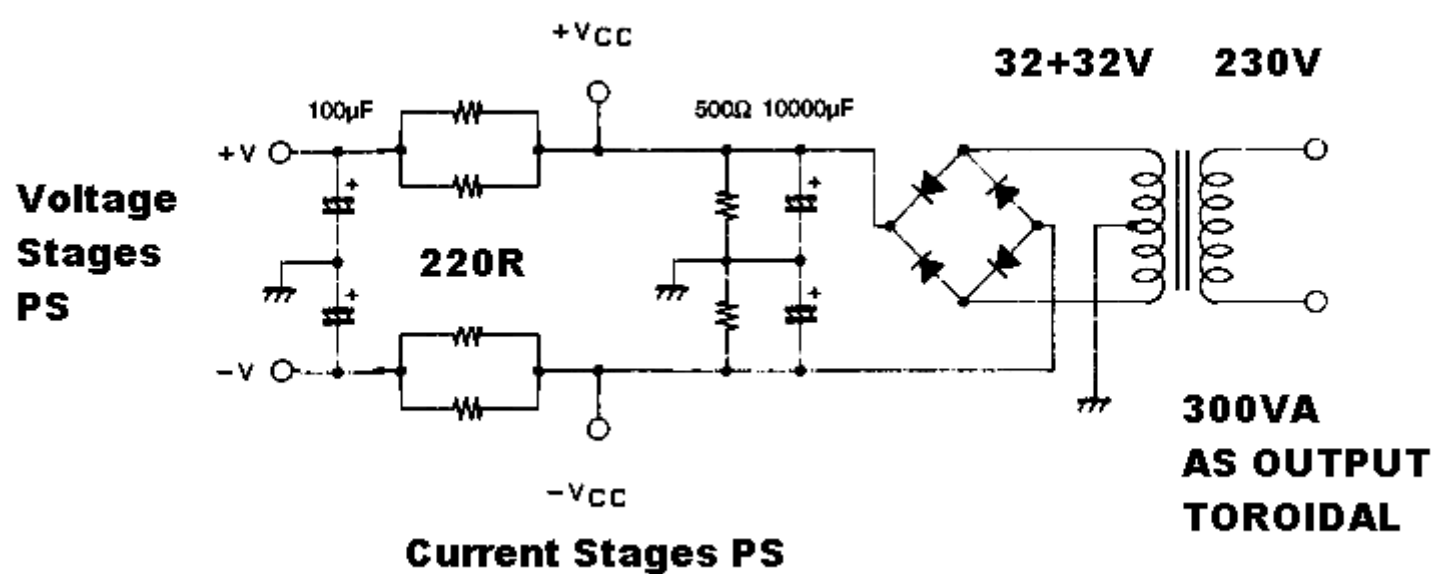
+RAIL schematic



There aren't any real surprises, and the sound quality is determined more by the choice of transistors and the circuit board layout than by the circuit design.



Each mono channel of the amplifier essentially consists of two different amplifiers connected in balanced mode, with a fully symmetrical design.



There is also a filter that eliminates any noise on Voltage Stages from Power Supply Unit.



a reduced window of negative feedback allows to give corrected details extremely accurate.