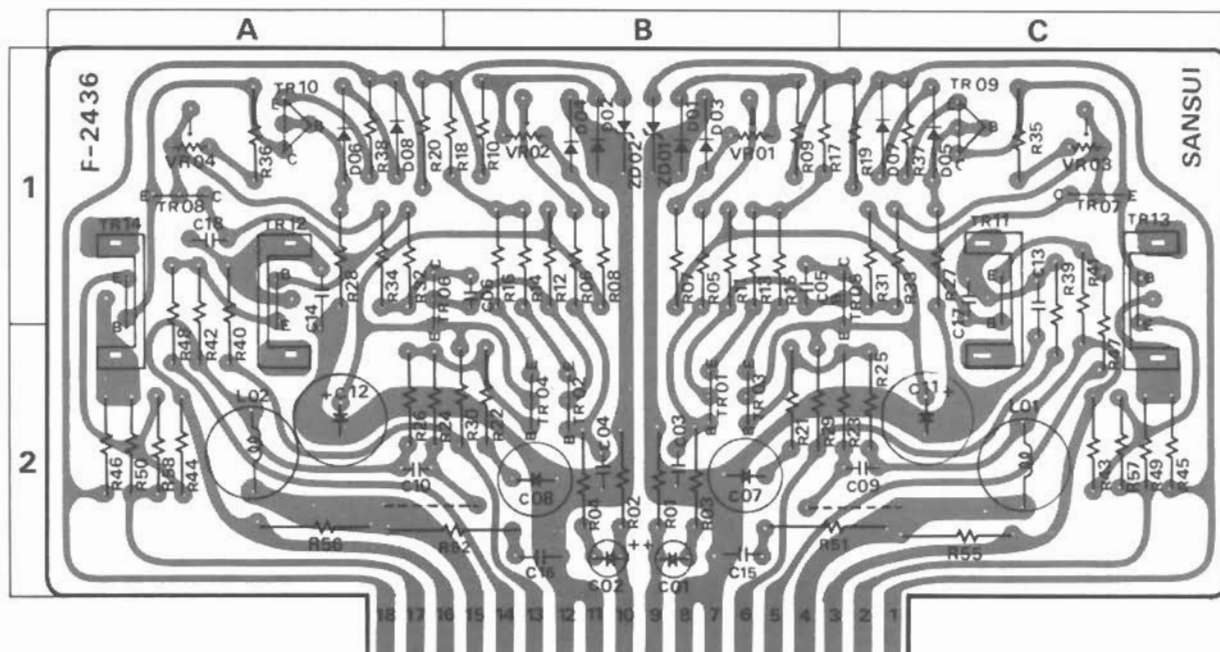


6-4. F-2436 Driver Circuit Board (Stock No. 7571201)

Conductor Side

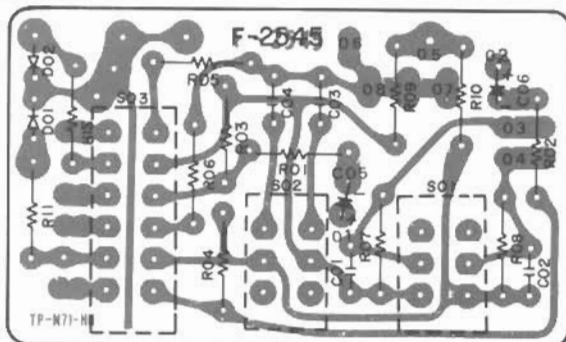


Parts List

Parts No.	Stock No.	Description	Position	Parts No.	Stock No.	Description	Position	Parts No.	Stock No.	Description	Position
TR01,02	0306271	2SC1708 (G)	2B	C03,04	0657101	100pF 50V C.C.	2B	R25,26	0107124	120kΩ	2D, 2A
TR03,04	0306271	2SC1708 (G)	2B	C05,06	0657150	15pF 50V C.C.	1B	R27,28	0107333	33kΩ	1C, 1A
TR05,06	0306700, 1	2SA818 (O, Y)	1,2C, 1,2A	C07,08	0530101	100-μF 6.3V E.C.	2B	R29,30	0191391	390Ω	2B, 2A
	0306801, 2	2SA849 (B, V)		C11,12	0519903	100-μF 80V E.C.	2C, 2A	R31,32	0107390	39Ω	1C, 1A
TR07,08	0305871, 2	2SC984 (B, C)	Transistor 1C, 1A	C13,14	0651333	33000pF 50V C.C.	1,2C, 1,2A	R33,34	0107332	33kΩ	1C, 1A
TR09,10	0306260, 1	2SC1628 (O, Y)	1C, 1A	C15,16	0601108	0.1-μF 50V M.C.	2B	R35,36	0107152	15kΩ	1C, 1A
	0306411, 2	2SC1720 (B, V)		C17,18	0657101	100pF 50V C.C.	1C, 1A	R37,38	0107181	180Ω	1C, 2A
TR11,12	0308531, 2	2SD381 (2) (M, L)	1,2C, 1,2A					R39,40	0191100	10Ω	1,2C, 1,2A
TR13,14	0303371, 2	2SB536 (2) (M, L)	1,2C, 1,2A	R01,02	0107124	120kΩ	2B	R41,42	0107151	150Ω	1,2C, 1,2A
D01,02	0311160	152473D	1B	R03,04	0107103	10kΩ	2B	R43,44	0191220	22Ω	2C, 2A
	0311180	151588		R05,06	0107124	120kΩ	1B	R45,46	0107151	150Ω	2C, 2A
D03,04	0311160	152473D	1B	R07,08	0107683	68kΩ	1B	R47,48	0191479	4.7Ω	1,2C, 1,2A
	0311180	151588		R09,10	0107223	22kΩ	1B	R49,50	0191479	4.7Ω	2C, 2A
D05,06	0340120	VD1212	Varistor 1C, 1A	R11,12	0107102	1kΩ	1B	R51,52	0153100	10Ω	2C, 2A
	0315850	EQA01-09		R13,14	0107220	22Ω	1B	R501,02	0107183	18kΩ	1,2C, 1,2A
ZD01,02	0315860	EQA01-09R	Zener diode 1B	R15,16	0107220	22Ω	1B				
	0315870	EQA01-09S		R17,18	0107332	33kΩ	1B	VR01,02	1035350	4.7kΩ(B) DC OV Adjust Volume	1B
C01,02	0519103	0.47-μF 50V E.C.	2B	R19,20	0201822	82kΩ	1W C.R.	VR03,04	1035310	1kΩ(B) Bias Current Adjust Volume	1C, 1A
				R21,22	0107182	18kΩ	2B				
				R23,24	0107274	270kΩ	2D, 2A				

6-5. F-2545 Filter & Muting Circuit Board (Stock No. 7593091)

Conductor Side



Parts List

Parts No.	Stock No.	Description
D01,02	0311160	152473D
	0311180	151588
D03,04	0310970	1N60P
	0311060	1N60 P
C01,02	0600187	0.018-μF 50V M.C.
C03,04	0600187	0.018-μF 50V M.C.
C05,06	0519105	2.2-μF 50V E.C.
R01,02	0107332	33kΩ
R03,04	0107273	27kΩ
R05,06	0107332	33kΩ
R07,08	0107824	820kΩ
R09,10	0107153	15kΩ
S01	1131170	Push Switch