



TITLE

601 GENERAL ASSEMBLY P/L

DRG. NO.

A2928-2 -2

ISS

3

COPYRIGHT © 1995

DATE 15/06/95

DRAWN KW

ITEM	QTY	Code No	DESCRIPTION	Drg No
		DM601-B	Complete ass'y	A2928
1	1	Y10006	Cabinet	A2921
2	1	G5371	Baffle sealing gasket	A2939
3	1	B1414	Baffle moulding	C2913
4	1	ZZ10111	Tweeter Ass'y	A2923
5	1	ZZ10049	Bass Ass'y	A2946
6	1	R5193	Clamping Ring ring (bass)	B2936
7	1	B4243	Logo	A2924
8	1	ZG0418	Grille Ass'y + Logo	A1628
9	1	ZZ10086	Crossover Assembly	A2995
10	4	G2208	Baffle insert	C2914
11	6	H0019	Scr 3.5c/bdx20 pan pozi cb	
12	1	S6408	Serial label	
13	4	H2062	Screw No. 6 x 5/8 csk ST	
14	1	P7749/50	Port Tube	A1929
15	1	G5363	Tweeter Gasket	A1599
16	4	H9733	M4 Chipboard Screw 6mm Soc	A2969
17	1	P3530	Double sided pad	
18	1	G0396	Bass Unit Gasket	A1448



TITLE

TWEETER ASSEMBLY

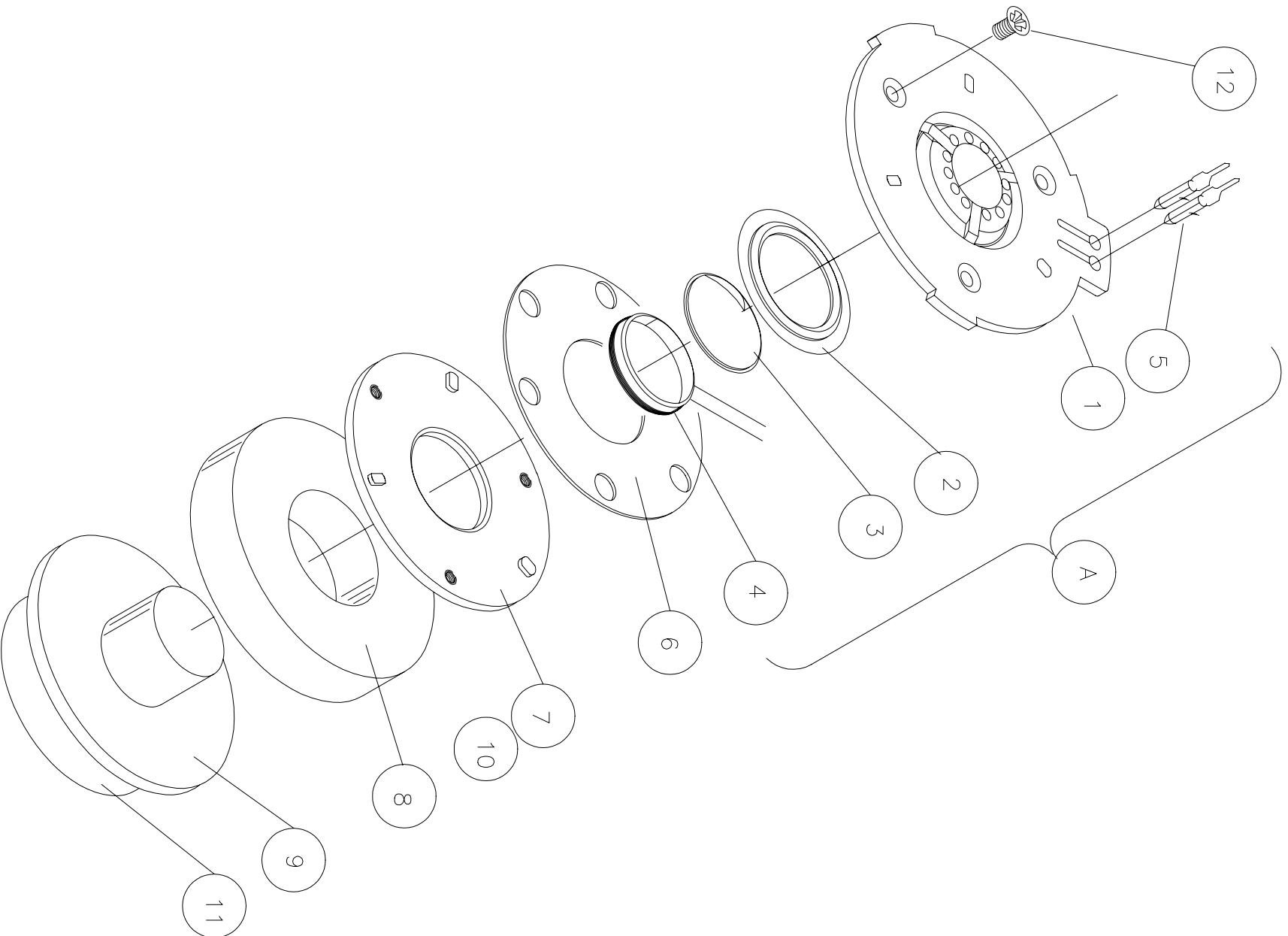
DRG. NO.

A2923-1 -2

ISS

3

COPYRIGHT © 1995 DATE 10/01/95 DRAWN KW





TITLE

TWEETER ASSEMBLY P/LIST

DRG. NO.

A 2923-2 -2

ISS

3

COPYRIGHT © 1995

DATE 10/01/95

DRAWN KW

ITEM	QTY	Code No	DESCRIPTION	REMARKS	Drg No
		ZZ10111	COMPLETE ASSEMBLY		A2923
A		ZC10111	Diaphragm mounting plate ass'y		
1	1	DD00930	Diaphragm mounting plate		B2907
2	1	SS01219	Suspension		A1292
3	1	DD01155	Dome metal		A1293
4	1	ZV00337	Coil assembly		ZV0337
5	2	PP02119	Terminal pin male solder		
6	1	GG00442	Gasket magnet to diaphragm		A1599
7	1	PP00655	Front plate		A1289
8	1	MM00051	Magnet ceramic		A1508
9	1	PP00663	Back plate/pole piece		A1290
10	1	AA05320	Ferrofluid		
11	1	LL03000	Label		A2961
12	3	HH01384	Screw	M4x6 CSK HD POZI	A2072



TITLE

601 BASS ASSEMBLY

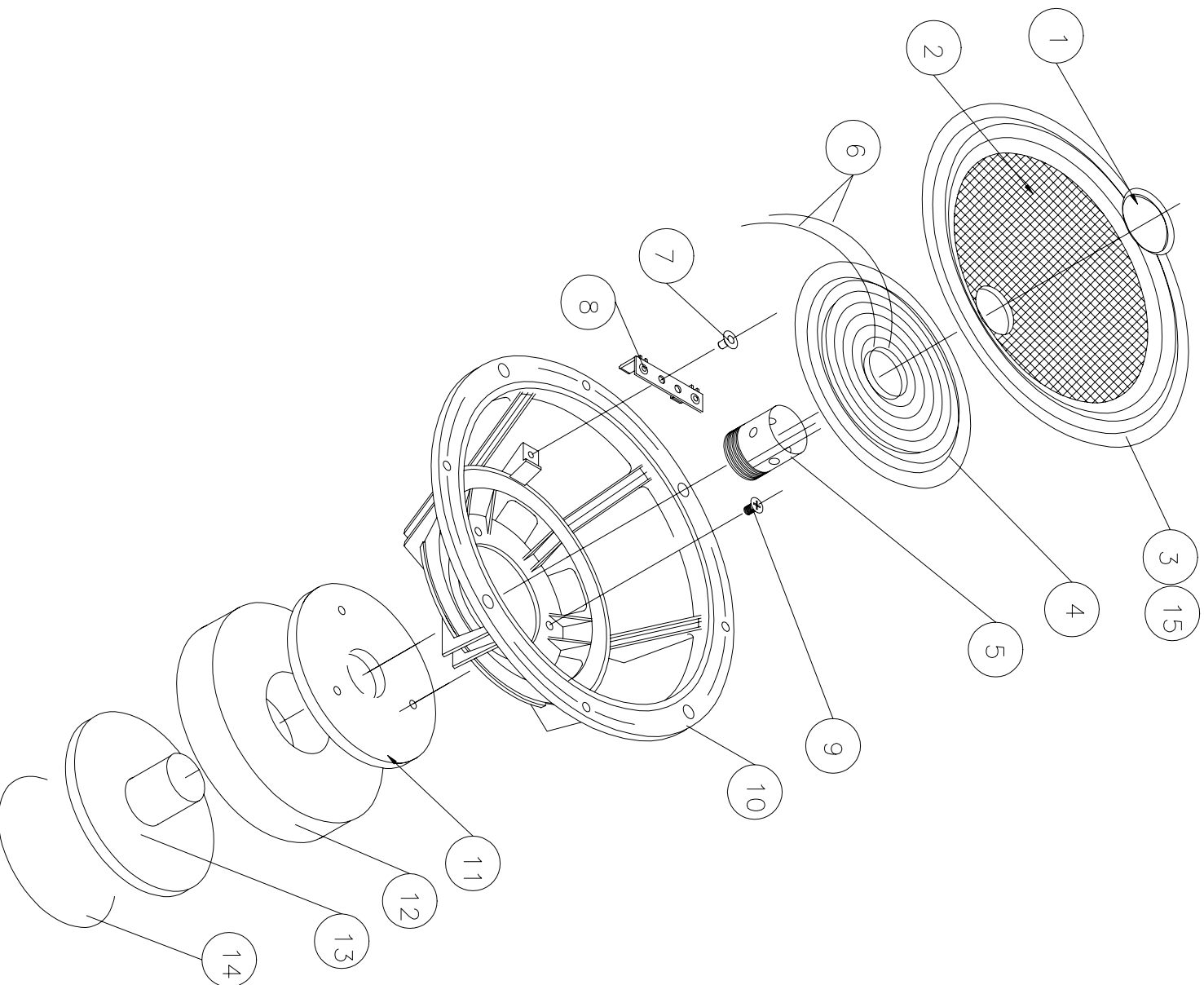
DRG. NO.

A2946-1 -2

ISS

3

COPYRIGHT © 1995 DATE 01/02/95 DRAWN KW





TITLE

601 BASS ASSEMBLY P/LIST

DRG. NO.

A2946-2 -2

ISS

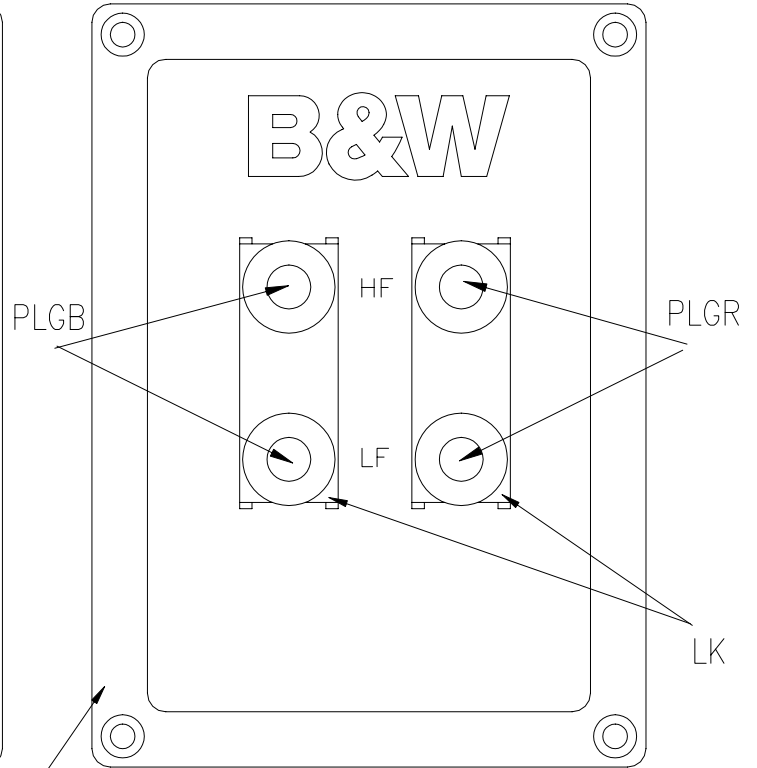
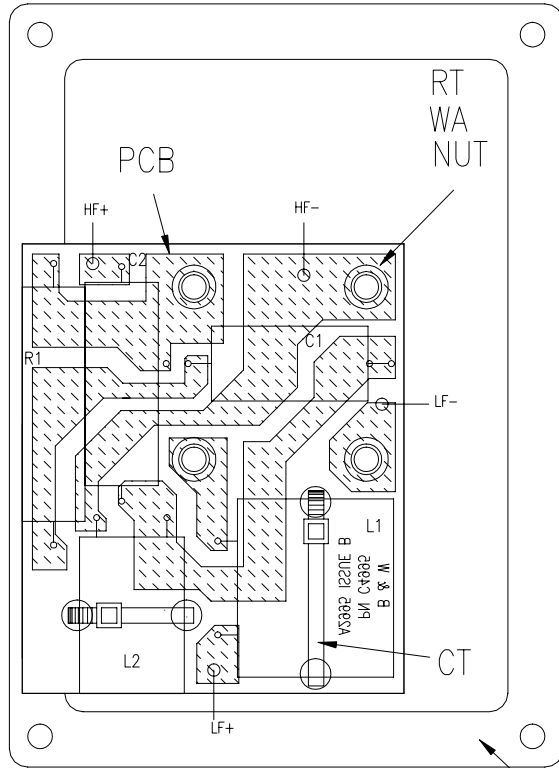
3

COPYRIGHT © 1995

DATE 01/02/95

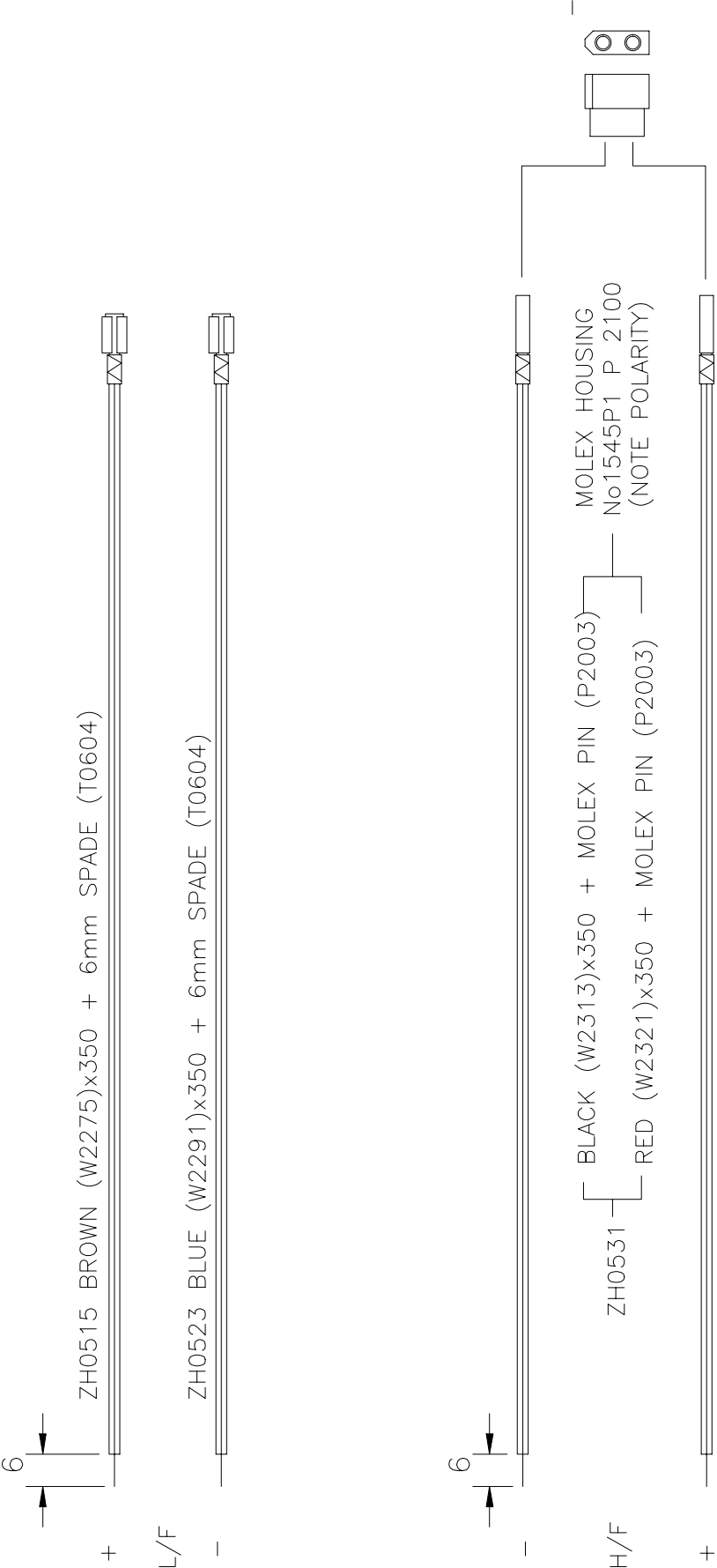
DRAWN KW

Item	QTY	Code No	DESCRIPTION	REMARKS	Drg No
		ZZ10049	COMPLETE ASS'Y		A2946
		ZC10049	Cone to coil ass'y		
		ZS03328	Cone to surround ass'y		
1	1		Dust cap		A1915
2	1	ZM11630	Cone		
3	1		Surround		A1804
4	1		Rear suspension		A2950
5	1		Coil ass'y		ZV0719
6	2		Tinsel		
7	1		Pop rivet		
8	1		Tag panel		
9	3		Screw csk hd pozi M4x8lg		
10	1		Chassis		C1444
11	1		Front plate		A1770
12	1		Magnet ceramic		A1514
13	1		Back plate/pole piece		A1771
14	1		Label		A2948
15	1		Card ring		A1893

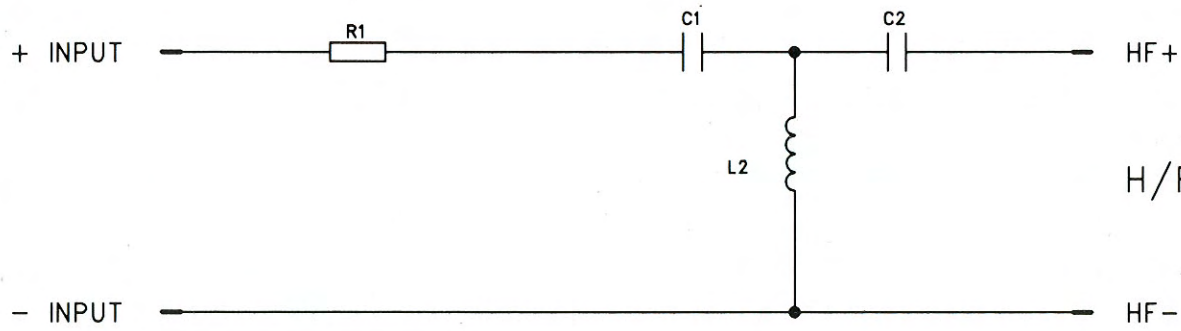


TT

ITEM	CODE NO	COMPONENT	VALUE	REMARKS
	ZZ10086	COMPLETE ASSEMBLY		DRG NO A2995
R1	R1791	RESISTOR	R56	7W WIRE WOUND
C1	C1910	CAPACITOR	4u7	70V ELECTROLYTIC
C2	C1066	CAPACITOR	10uF	70V ELECTROLYTIC
L1	ZL1589	INDUCTOR	1.4mH	
L2	ZL1104	INDUCTOR	0.15mH	
TT	ZT0361	Term/tray assy		(REF TERM TRAY ASSY)
HAR	ZX1057	Harness assy		DRG NO A3045
CT	C6513	CABLE TIE		2 OFF
NUT	H4030	NUT		4 OFF M4 FULL NUT
WA	H5096	WASHER		4 OFF M4 SHAKE PROOF
LK	T2208	LINK		2 OFF DRG NO A2198
PCB	C4995	C4995/E/P		PRINTED CIRCUIT BOARD DRG NO A2995
RT	T0736			TUCKER 4.2 I/D X 4 OFF
PLGR	P1709	RED PLUG		2 OFF (PUT INTO 4mm TERMINALS)
PLGB	P1717	BLACK PLUG		2 OFF (PUT INTO 4mm TERMINALS)

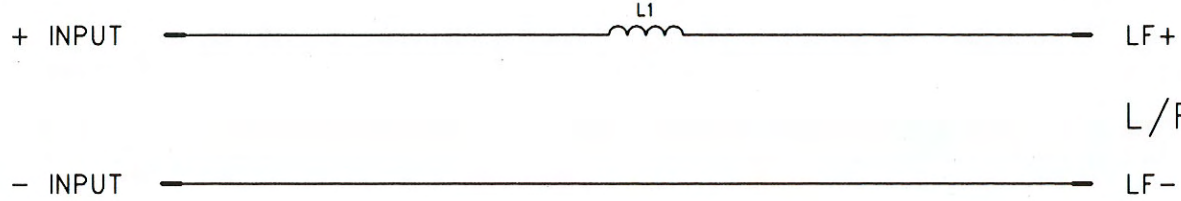


H/F



H/F OUTPUT

L/F



L/F OUTPUT