
DLCP Firmware migration

Introduction

To solve some strange bugs and unexpected behaviour we had to rewrite the complete firmware and bootloader from the ground up. This firmware version is called V2.0

This document describes the steps to update the DLCP firmware to this V2 version. Please don't remove the USB cable or power during the update.

We have to program the DLCP twice: first we replace the current bootloader of the DLCP and second we load the new firmware.

Replacing the bootloader

1. Please make sure you have saved your settings, because all DLCP settings will be lost.
2. Download latest HFD V2.12 (Hypex Filter Design)
3. Remove or turn off any connected amplifier
4. Start HFD, turn on the DLCP and connect it with USB to your PC
5. Go to view-filter design (Ctrl+F)
6. Select Download firmware update (Figure 1)
7. Search for the file: "DLCP Bootloader V2.0.hex"
8. The DLCP will now enter its old bootloader, which can be verified by the firmware version, which should be 99.99. (Figure 2)
9. Select Download firmware update again, and select "DLCP Bootloader V2.0.hex" again.
10. The DLCP will now program the new V2.0 bootloader.
11. If everything went well, the DLCP will enter the new bootloader, which can be verified by the firmware version, which now should be 99.77. (Figure 3)

Programming the V2.0 firmware

1. Select Download firmware update
2. Search for the file: "DLCP Firmware V2.1.hex"
3. The DLCP will now program the new V2 firmware.
4. The DLCP should automatically restart with the new firmware (Figure 4). Close HFD and restart it. If the DLCP does not restart automatically, then please remove power completely, and apply power again.
5. Set volume to the desired value, reload your filter and other settings, reconnect your amplifiers

Don't hesitate to contact us if anything went different than described above, or if you have any question. Please e-mail us at support@hypex.nl

Best Regards,
The Hypex crew.

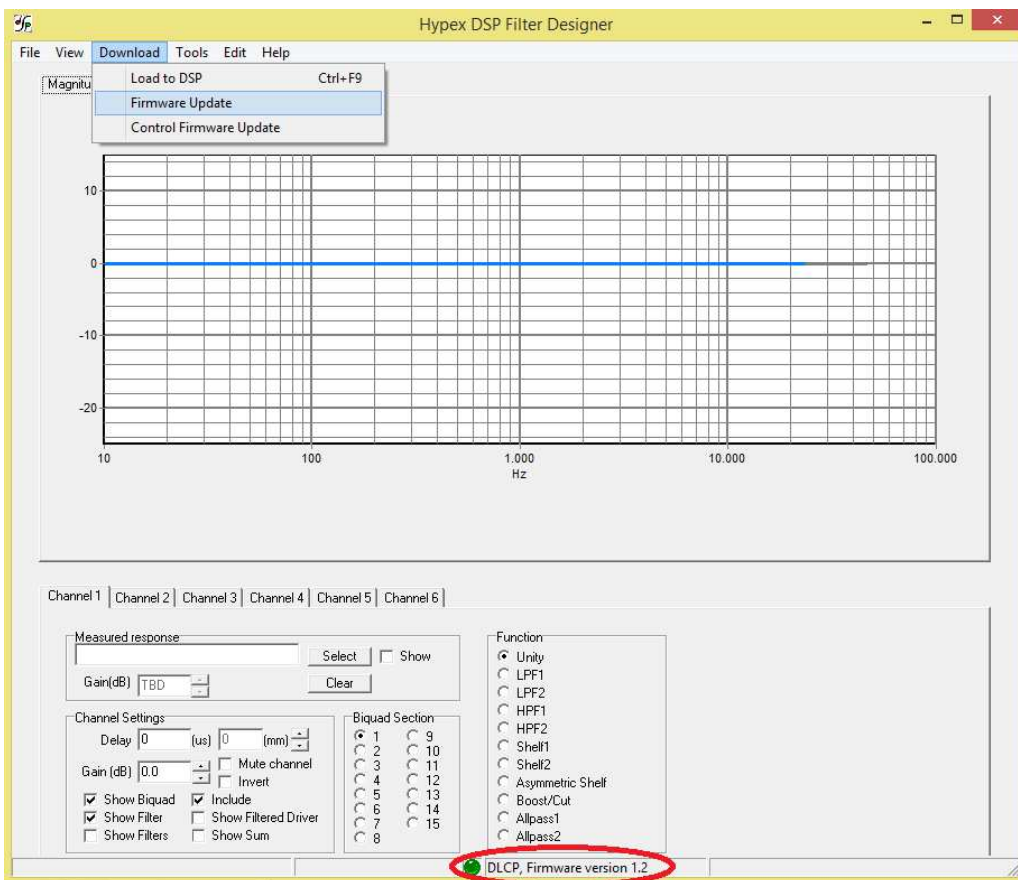


Figure 1: old firmware

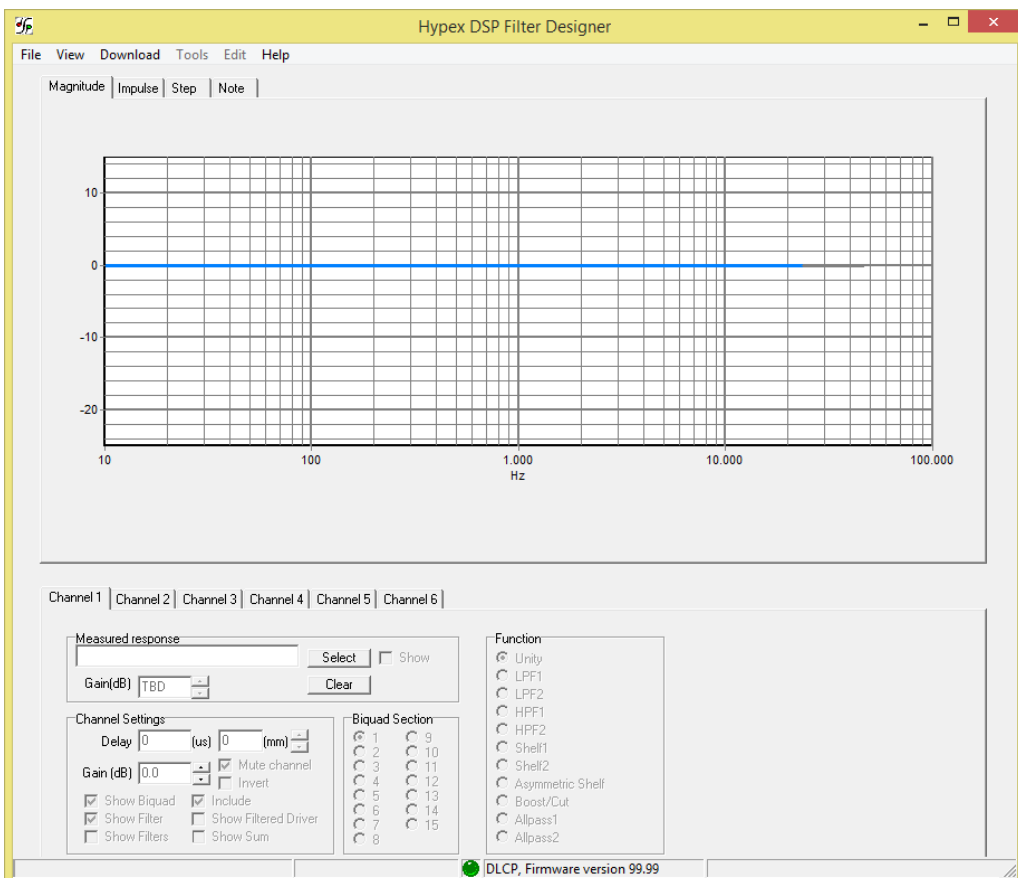


Figure 2: old bootloader

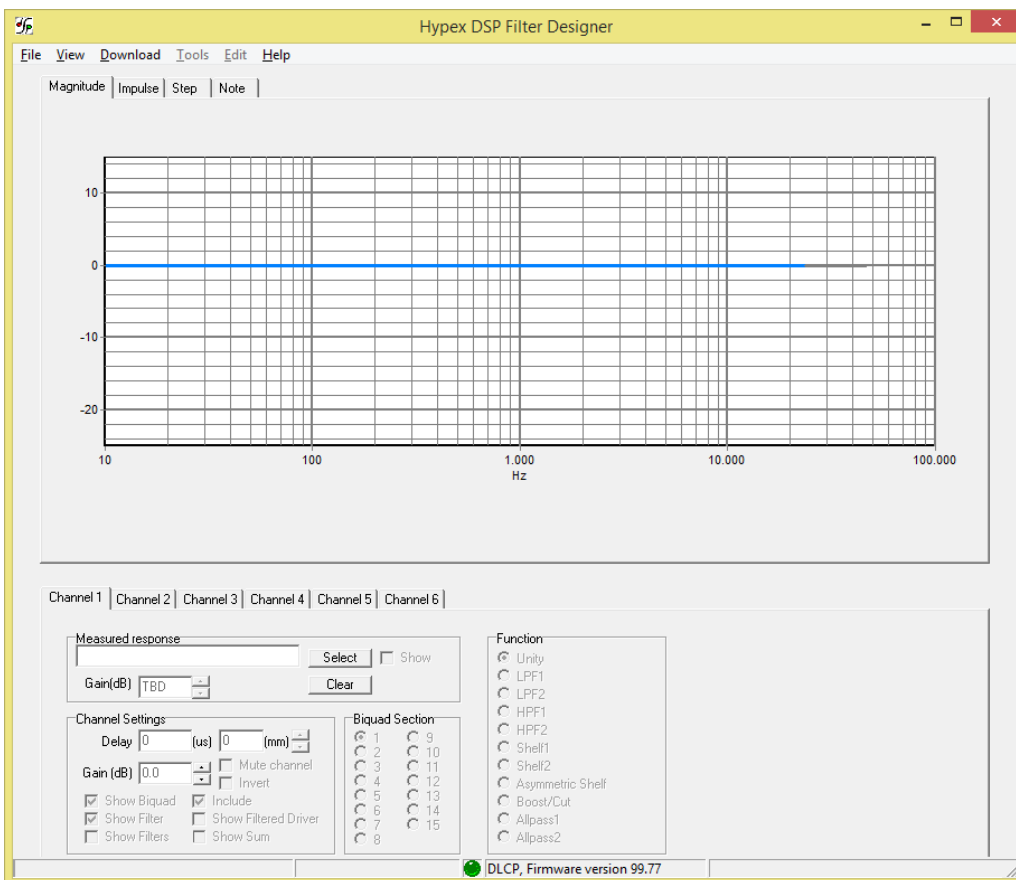


Figure 3: V2.0 bootloader

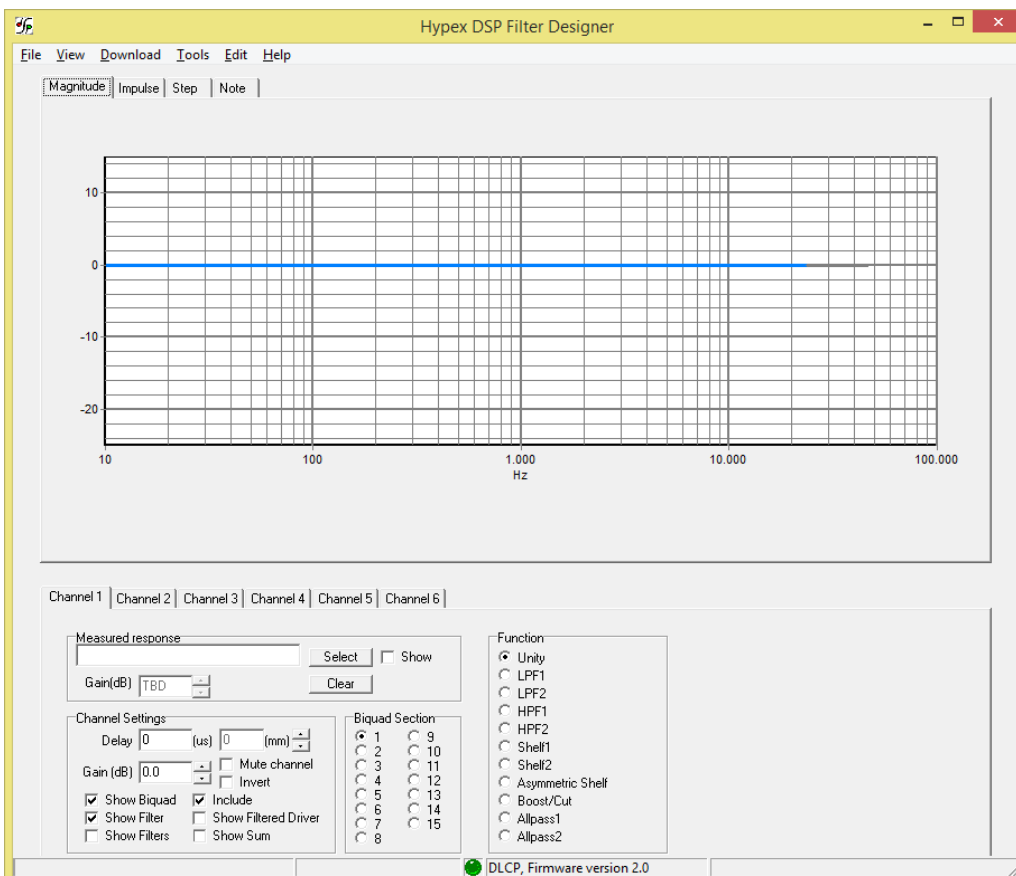


Figure 4: V2 Firmware

Document Revision	Description	Date
R0	Initial draft	2.12.2014
R1	DLCP firmware V2.1	11.12.2014