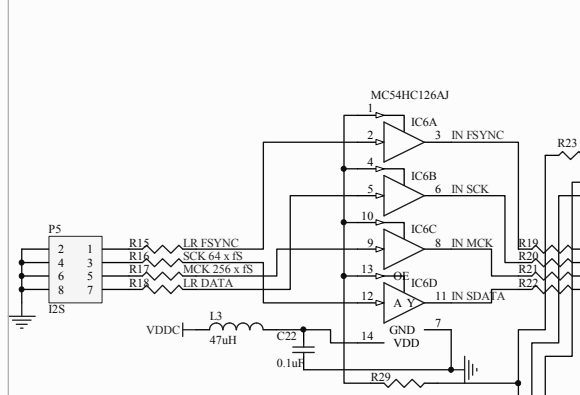
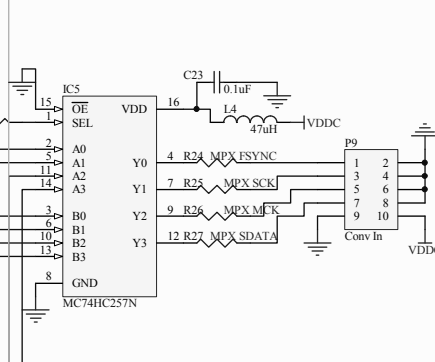


RJ45 I2S input + buffer

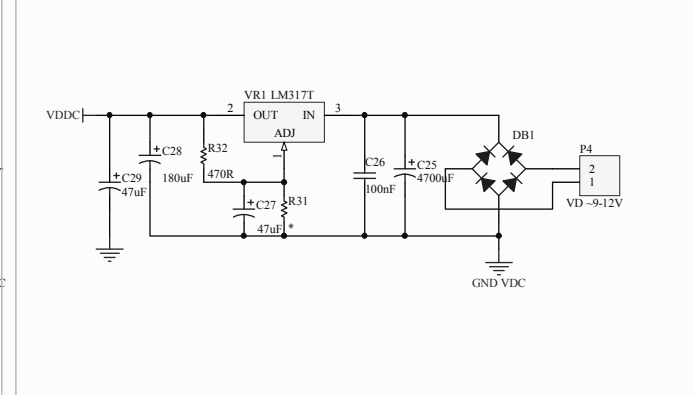


I2S input / SPDIF-I2S multiplexer

I2S - 18bit LSBJ conversion in

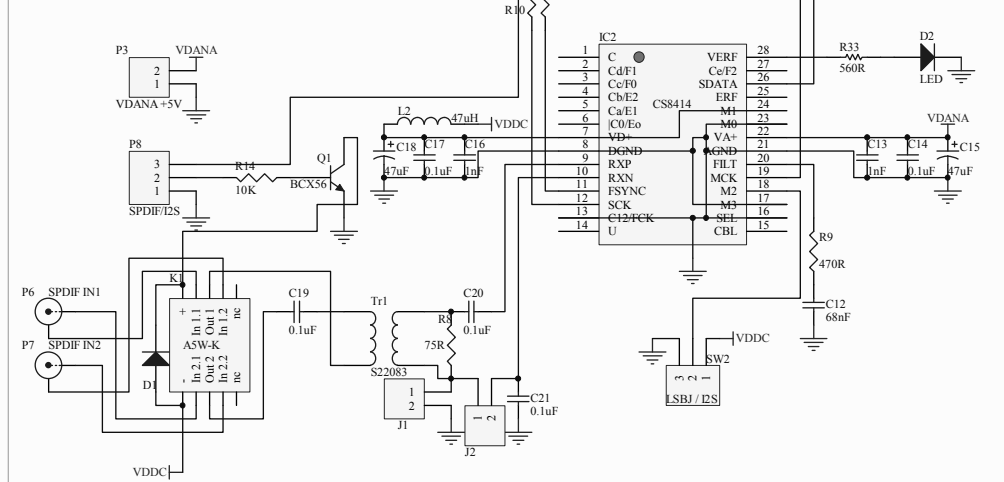


Common digital PSU



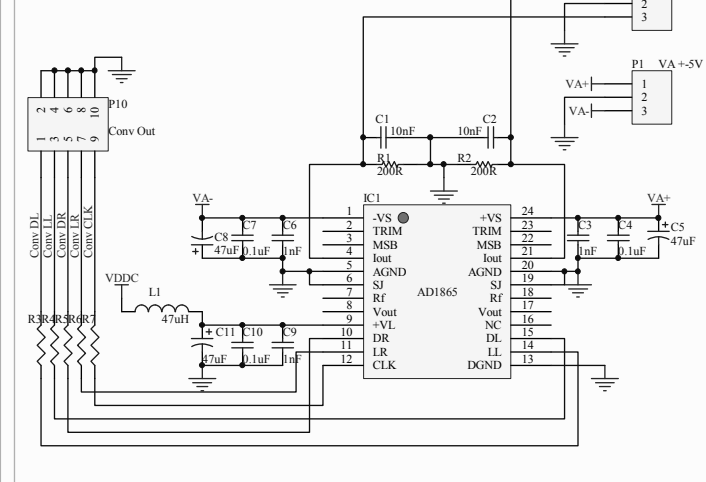
SPDIF input + receiver

I2S/SPDIF1/SPDIF2 selection



AD converter

I2S - 18bit LSBJ conversion out



Title		
Size	Number	Revision
A3		
Date:	2010. 08. 05.	Sheet of
File:	F:\Hobby\ShifterDAC\SchDoc	Drawn By: