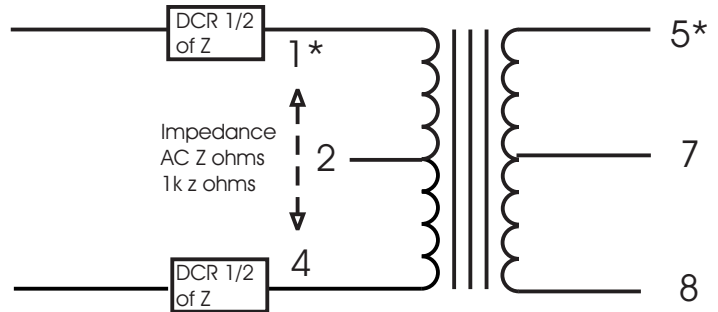
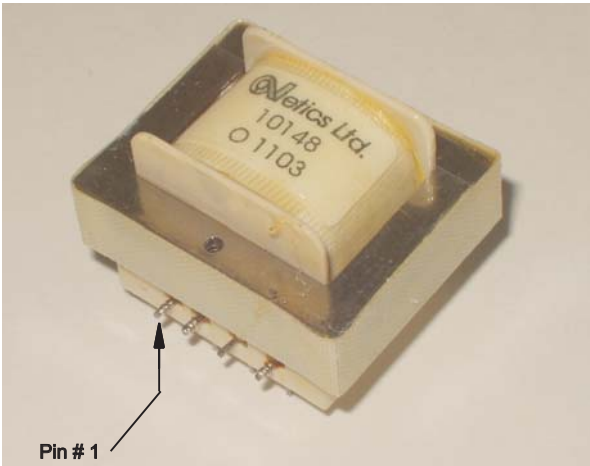
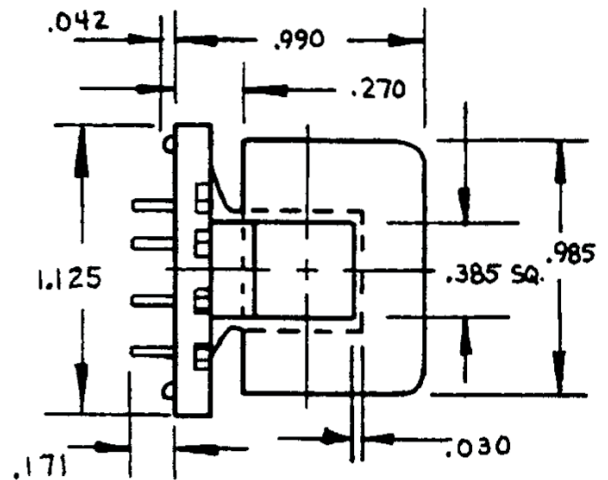
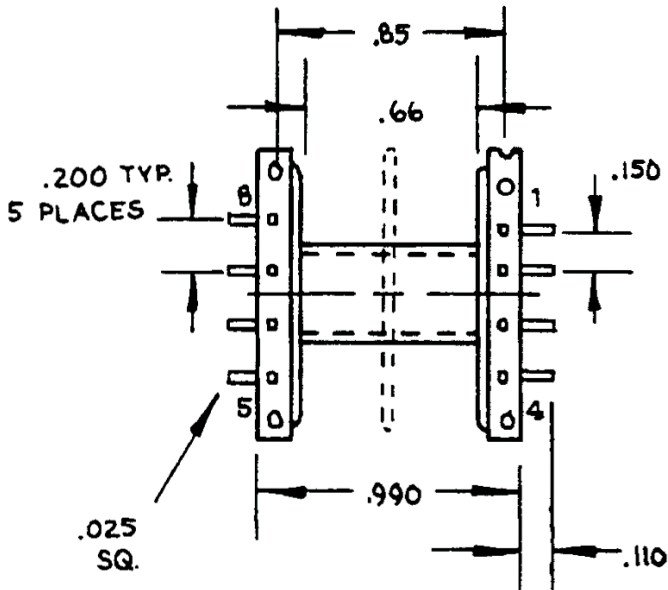


DAC Buffer 10148



Input:
1000 Zohms impedance
Primary ; 2.7vac rms 20 to 20 kHz
Leads 1* to 2: 27.2 ohms DCR
2 to 4: 23.7 ohms DCR
Secondary ; 2.7vac rms 20 to 20 kHz
Leads 5* to 7: 26.0 ohms DCR
7 to 8: 26.0 ohms DCR



DAC Buffer:	L	W MAX.	H	W
In mtg frame	1.375	1.21	1.41	1.125

