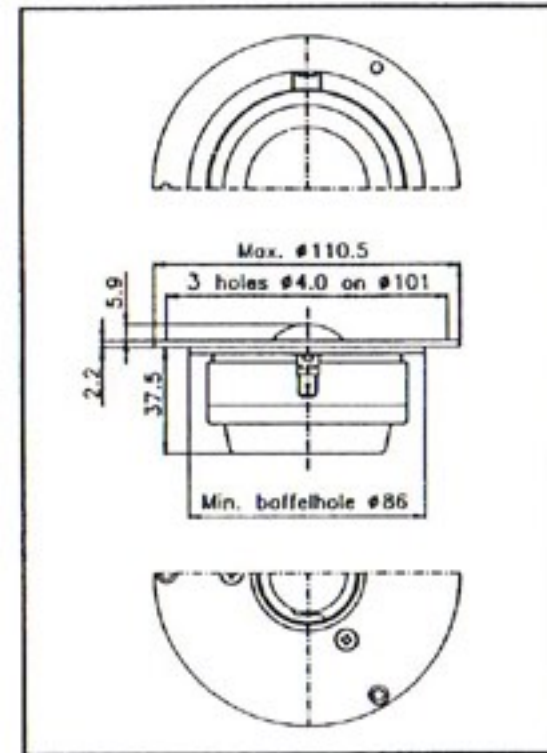
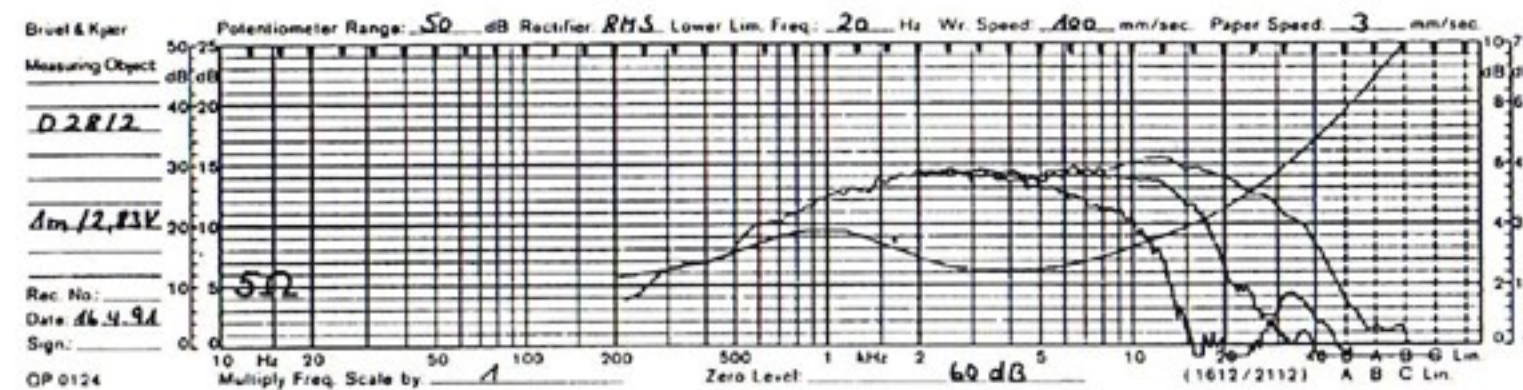


## Soft Dome Tweeter D-28/2

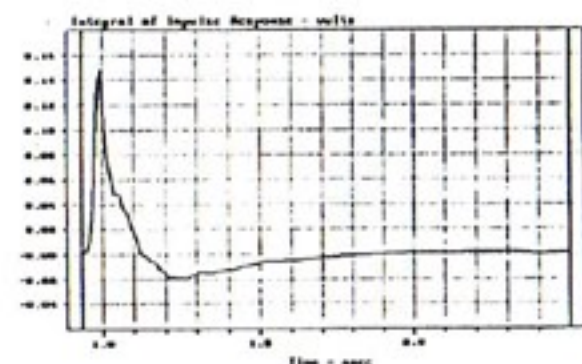


Produced for more than 14 years, the D-28 has now been revised in many details. The improvements relate to the acoustic-musical side as well as to the inside mechanics. In terms of technical data and measurements the D-28/2 is fully compatible with its predecessor. The application of this soft dome tweeter in 2-way systems from app. 2,000 Hz is found in many prestigious brands and often with 6 dB crossover designs.

The D-28/2 is a perfect match for 3-way constructions as well. As proven by the measurements shown here, the dynamic response of this tweeter is simply outstanding. It fully documents the advantage of this professionally designed soft-dome set against any other product.

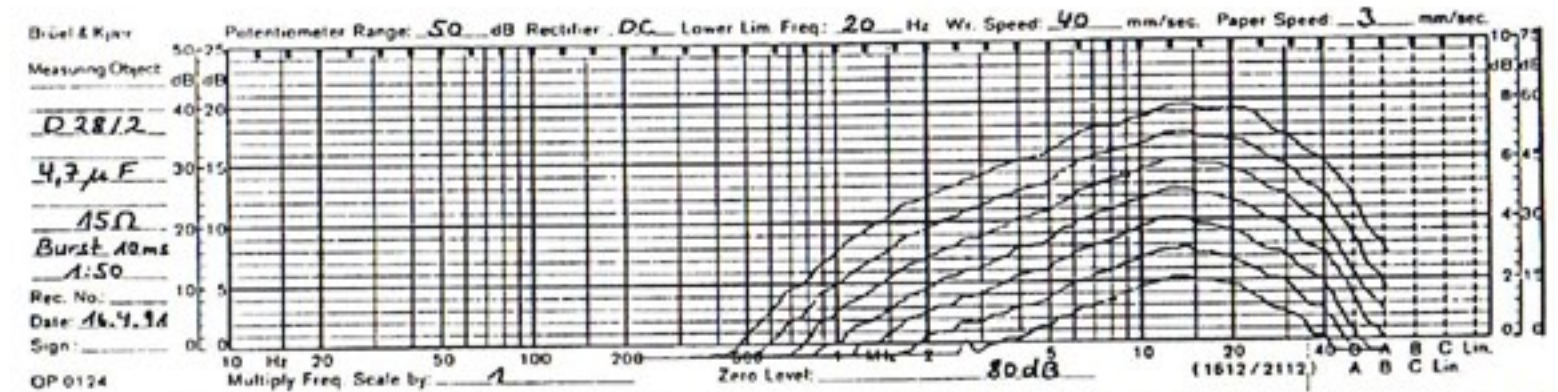


Frequency response and impedance curve of the D-28/2, distance: 1 m, on-axis, 30° and 60°.



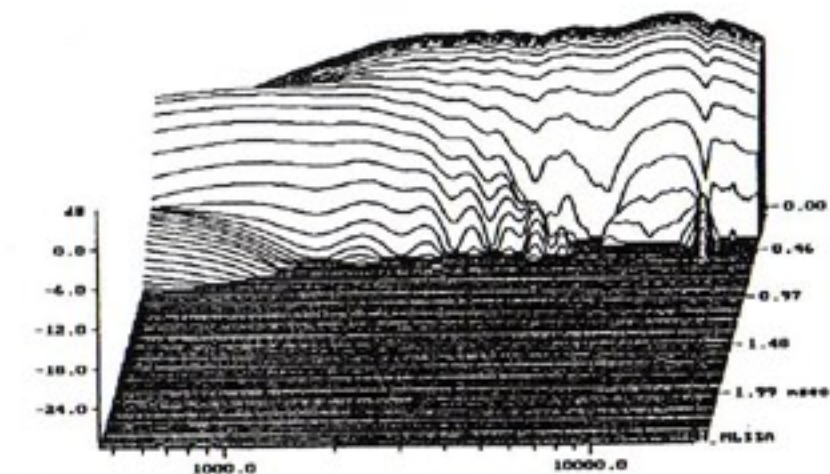
The MLSSA measurements show the pulse response of the D-28/2.

## Dynamic Measurements



Levels of 1, 3, 10, 30, 100, 300 and 1,000 watts were applied while recording the curves. The parallel arrangement of the curves indicates that even fast 1,000 W peaks do not produce any compression.

## MLSSA Waterfall Plot



The MLSSA cumulative spectral decay (waterfall) plot shows the energy/time response of the D-28/2. These unique results clearly show that delayed reflections have been reduced to a minimum.

## Specifications

### Thiele-Small Parameter:

Q, mechanical	$Q_{ms}$	0.71
Q, electrical	$Q_{es}$	0.97
Q, total	$Q_{ts}$	0.41
Resonance free air	$f_s$	880 Hz
force factor	$B \times L$	3.9 Tm
eff. cone area	$S_D$	7.7 cm <sup>2</sup>
moving mass	$M_{ms}$	0.53 g
lin. excursion (p-p)	$X_{max}$	0.3 mm
max. excursion (p-p)		3.2 mm

**Power handling,**  
depending on crossover:  
nominal (long term)  
transient

IEC	130 W
10ms	1,000 W

**Voice coil:**  
diameter  
length  
layers  
inductance(10 KHz)  
nom. impedance  
DC resistance

d	28 mm
h	2.8 mm
n	2
$L_s$	0.065
$Z_{ec}$	8 ohms
$R_s$	5.2 ohms

**Sensitivity** 2.83 V see curve

**Net weight**  
**Overall dimensions**

560 g  
Ø 111 x  
46mm