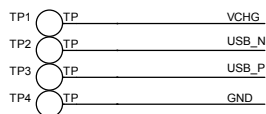
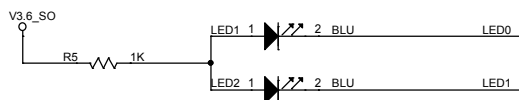


## USB声卡



## LED指示灯



## I2S接线:

SPI\_PCM:低电平使能I2S

模块的I2S输出高电平为1.8v

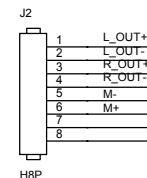
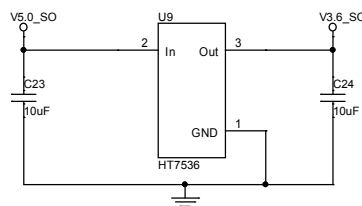
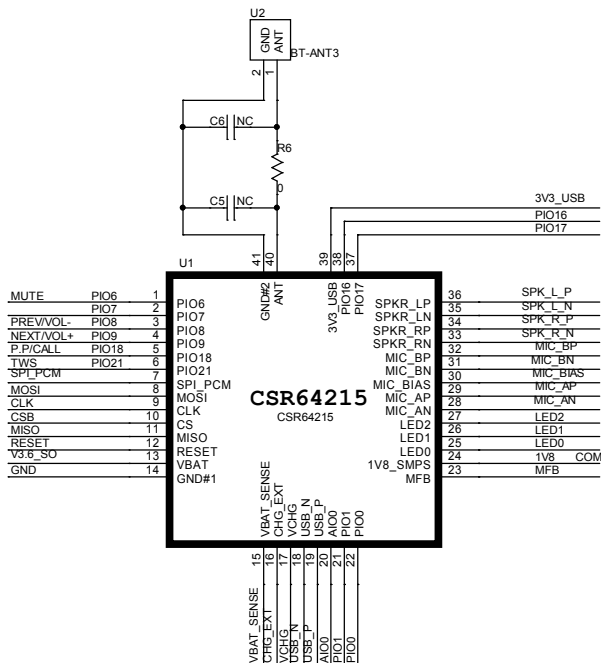
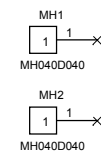
PCM510x或ES90xx连接时要做电平匹配

注意: I2S模式

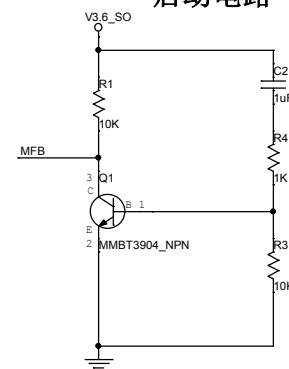
SPI_PCM	GND
MISO	DATA
CLK	BCK
CSB	LRCK
GND	GND

PCM510x或ES90xx输入  
要加电平匹配电路

1.8v转3.3v电平匹配芯片或电路



## 启动电路



## MIC输入

