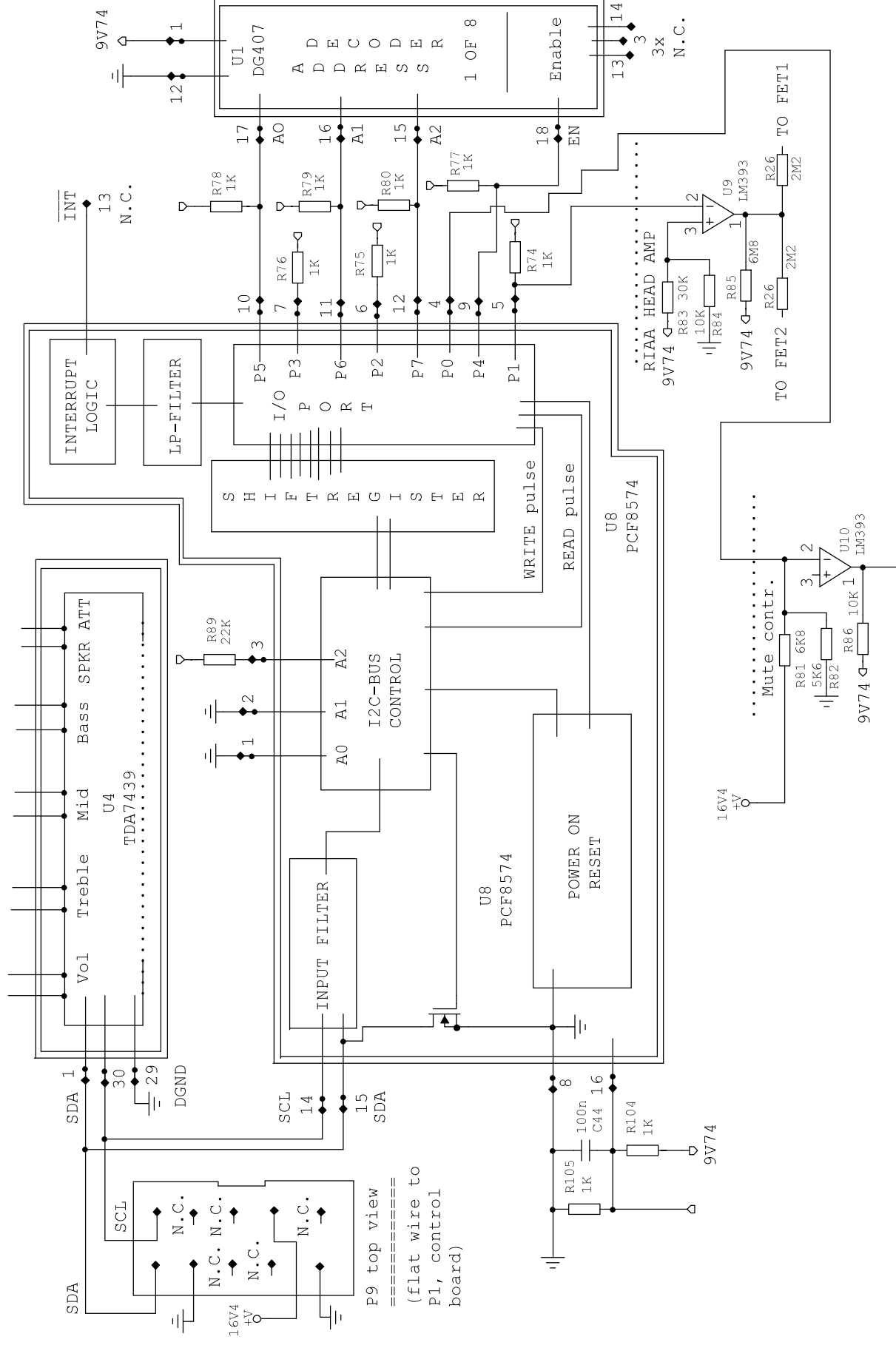
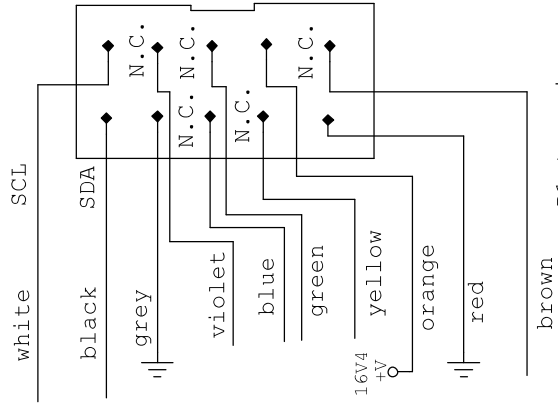


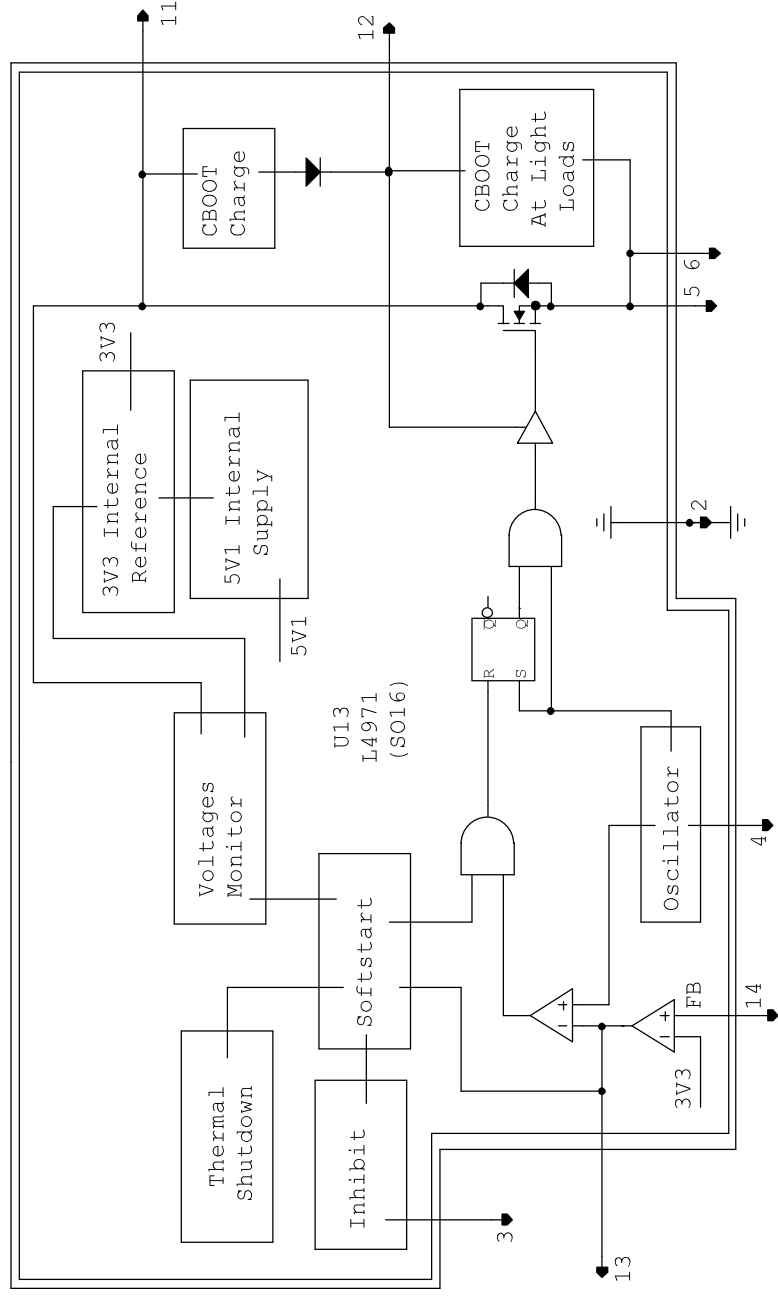
Linn Kolektor Main Board Design: ET, ES, 06-11-98
Interface to control board

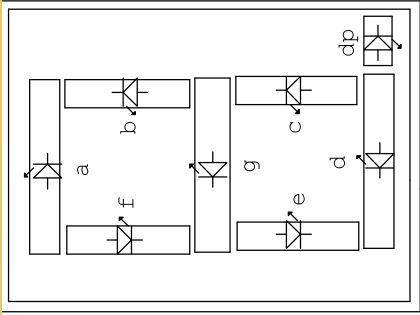




P1 top view
=====
(flat wire to
P9, main board)

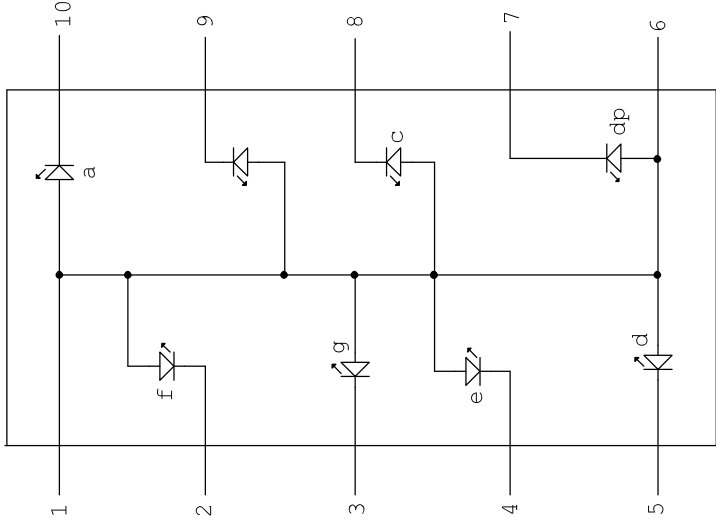
Linn Kolektor Control board PCAS 129/L2
Interface to main board





D1-D4: HDSP7801
Hewlett Packard

D1-D4: HDSP7801
Hewlett Packard



Linn Kolektor Control
board PCAS 129/I2
LED Display

U2 MN5450 N.C.: 1,12,23
U1 MN5450 N.C.: 1,12,23,19,20
other PINS U1+U2:
=====

2:	GND
21:	ILU (to R1)
22:	+V
24:	Clock
25:	DATA
26:	Enable

