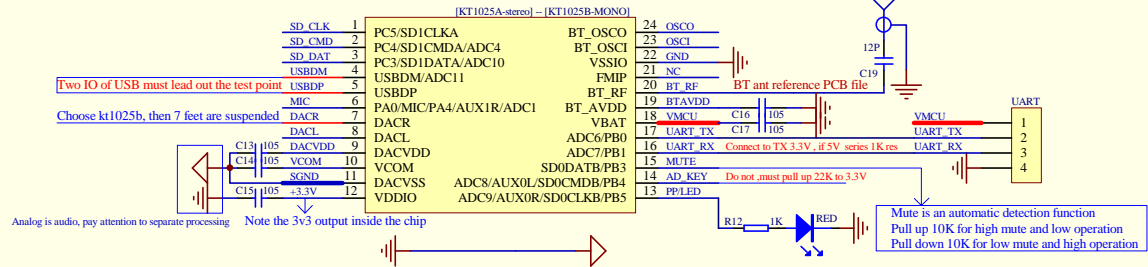
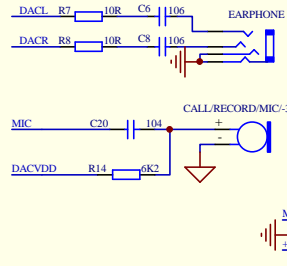


设计注意事项:

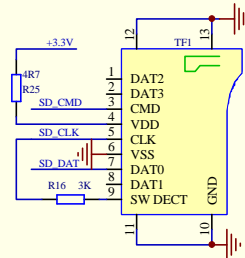
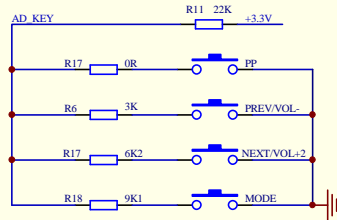
1. Please hang the unused pin directly in the air
2. The power of chip beyond other , main power supply shall be + 5.0V [pin 18]
3. There is a reference LDO of 3.3V in the chip, so there is no need to supply it with 3.3V. [pin-12]
4. The IC power supply voltage is 4.2V, which is the best working condition. 5V diode in series can be used directly

Bt201 scheme reference schematic



It's very important to short the analog ground and digital ground at the power input!!!!

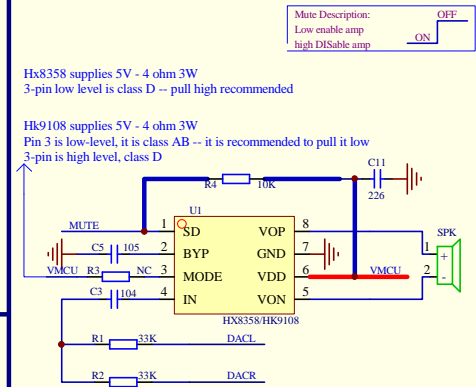
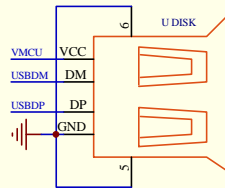
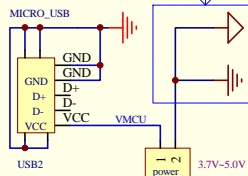
Key circuit - not suspended



Tfcard notes:

1. Tfcard and SD card are the same in principle
 2. Tfcard can be suspended when not in use
 3. Among them, the 3K resistance of R16 is used to detect TF
 4. the 4.7R of R25 is the current limiting res of the TF card
 5. It is strongly recommended to compare the PCB file of bt201 given by us
- Tfcard only supports fat or FAT32 file system with a maximum of 32g

GND and AGND are short circuited at the power inlet



TITLE: Bt201 scheme reference schematic

SIZE A4	DATA: 2019-12-05	VER: V6
NAME:	备注: SZQYVHOME	