

# AW3000 Bass Box

By Olivier Jeux, LEBIN

For Phase Linear technical support contact:

Email: techsupport@phase-linear.com Internet: <http://www.phase-linear.com>



## Box Properties

--Description--

Name: philvoc

Type: Vented Box

Shape: Prism, square

--Box Parameters--

Vb = 65, liters

V(total) = 95,02 liters

Fb = 32, Hz

QL = 6,687

F3 = 32,89 Hz

Fill = none

--Vents--

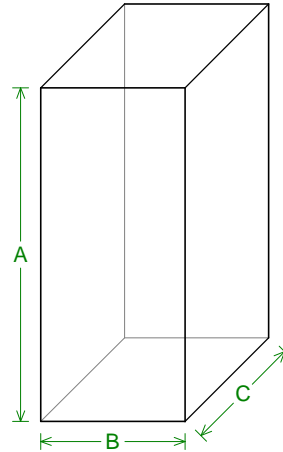
No. of Vents = 2

Vent shape = round

Vent ends = two flush

Dv = 70, mm

Lv = 279,1 mm



--External Dimensions--

A = 832,3 mm

B = 360, mm

C = 394, mm

--Internal Dimensions--

A = 800,3 mm

B = 328, mm

C = 362, mm

--Wall Thickness--

Front = 16, mm

Side = 16, mm

## Driver Properties

--Description--

Name: AW3001

Type: Standard one-way driver

Company: Mivoc Audiosysteme

--Configuration--

**No. of Drivers = 1**

--Driver Parameters--

Fs = 27, Hz

Qms = 4,1

Vas = 97, liters

Xmax = 6,3 mm

Sd = 507, sq.cm

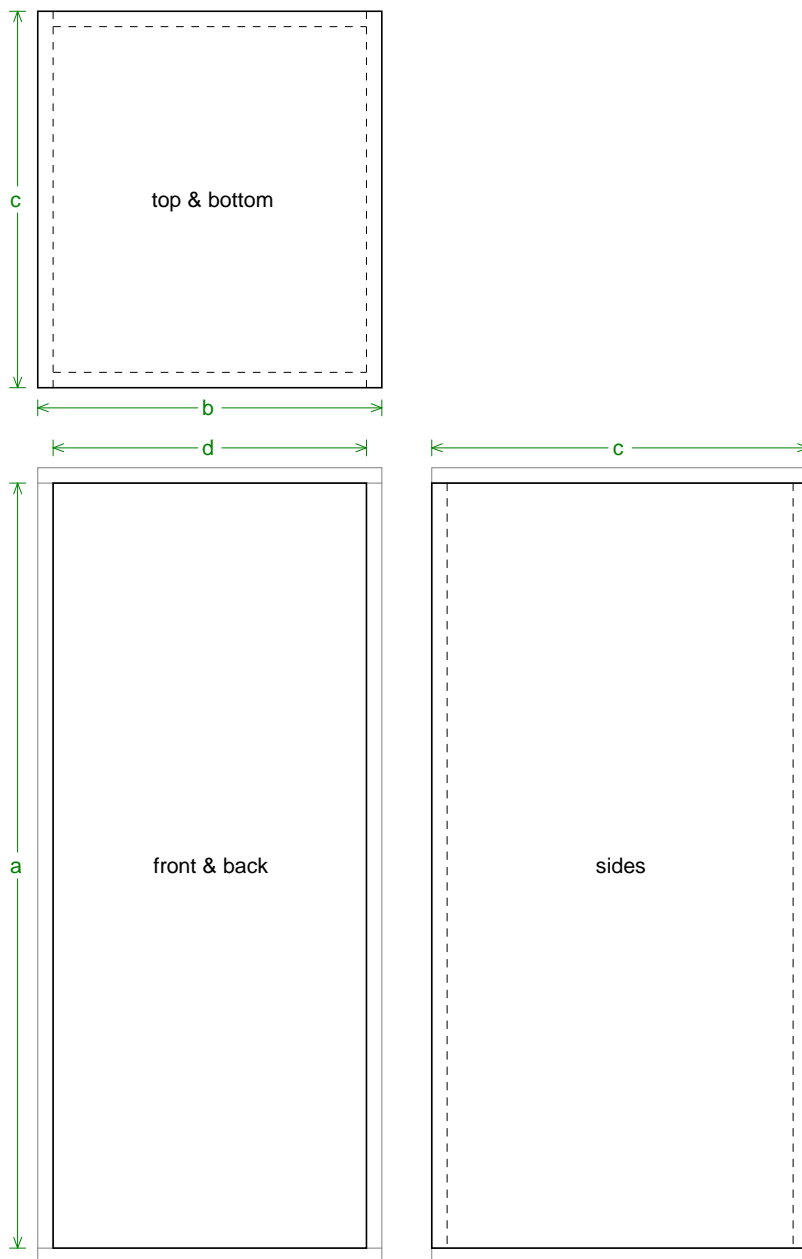
Qes = 0,33

Re = 3, ohms

Le = 1,4 mH

Z = 4, ohms

Pe = 180, watts



### Box Parts

Box Shape: Square Prism

1 Top, 1 Bottom: depth (c) = 394, mm  
width (b) = 360,, thickness = 16, mm

1 Front, 1 Back: height (a) = 800,3 mm  
width (d) = 328,, thickness = 16, mm

2 Sides: height (a) = 800,3 mm  
depth (c) = 394,, thickness = 16, mm

--Driver Mounting--  
Mounting: Front

--Misc Objects Inside or Part of Box--

Object: ampli

No. of Objects: 1

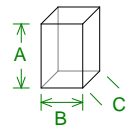
Volume: 4,306 liters (reduces box)

Shape: Square Prism

A = 245, mm

B = 185, mm

C = 95, mm



Object: tasseaux

No. of Objects: 1

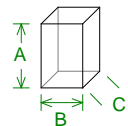
Volume: 1,564 liters (reduces box)

Shape: Square Prism

A = 16, mm

B = 328, mm

C = 298, mm



Object: closed HP

No. of Objects: 1

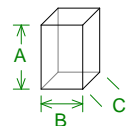
Volume: 21,97 liters (reduces box)

Shape: Square Prism

A = 185, mm

B = 328, mm

C = 362, mm



### Wiring Diagram

