

6

5

4

3

2

1

REVISION RECORD

LTR	ECO NO:	APPROVED:	DATE:

D

D

C

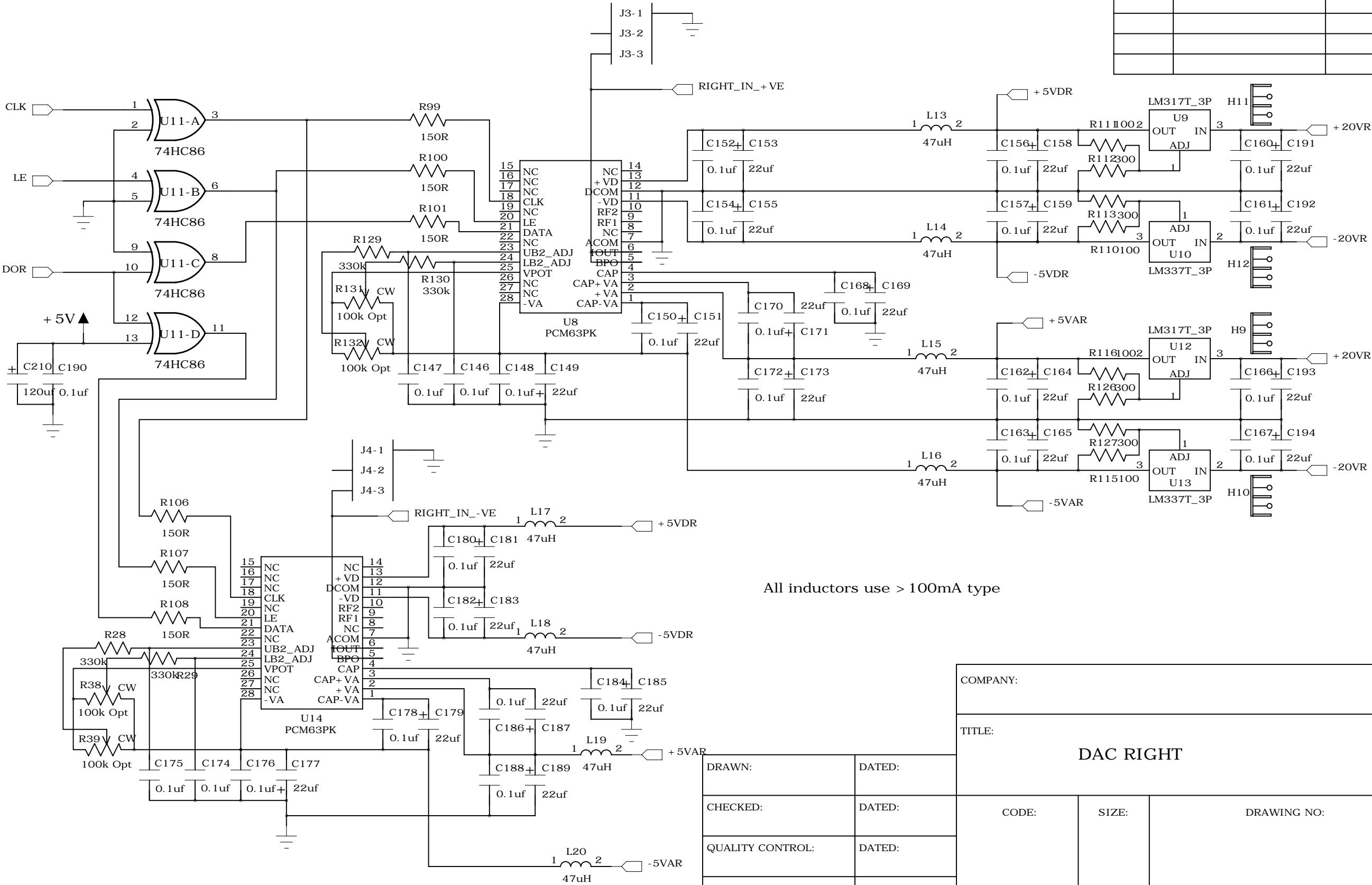
C

B

B

A

A



All inductors use > 100mA type

COMPANY:			
TITLE:			
DAC RIGHT			
DRAWN:		DATED:	
CHECKED:		DATED:	
QUALITY CONTROL:		DATED:	
RELEASED:		DATED:	
SCALE:			SHEET: OF 7

D

C

B

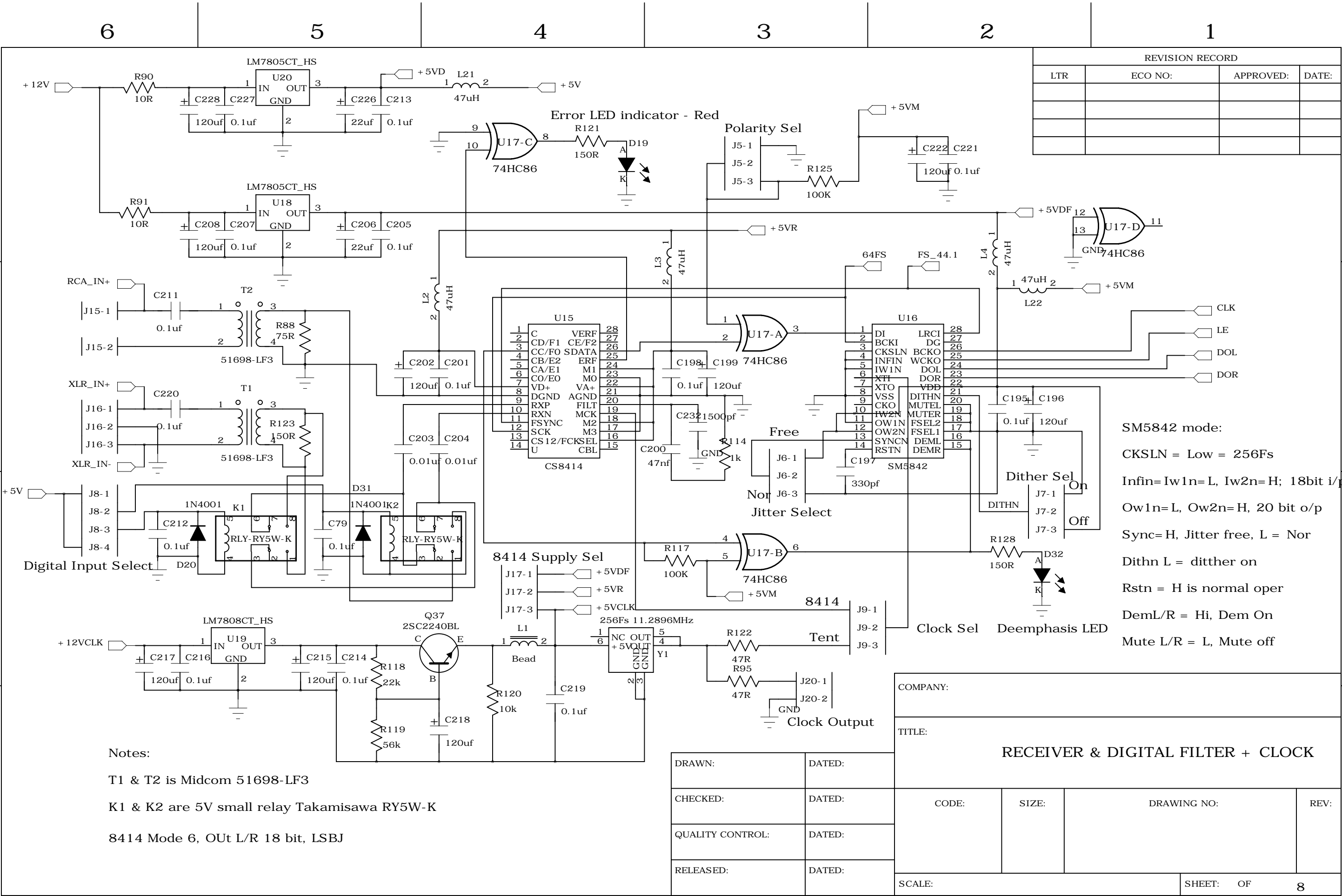
A

D

C

B

A



Notes:

T1 & T2 is Midcom 51698-LF3

K1 & K2 are 5V small relay Takamisawa RY5W-K

8414 Mode 6, OUT L/R 18 bit, LSBJ

SM5842 mode:

CKSLN = Low = 256Fs

Infin= Iw1n=L, Iw2n=H; 18bit i/p

Ow1n=L, Ow2n=H, 20 bit o/p

Sync=H, Jitter free, L = Nor

Dithn L = dither on

Rstn = H is normal oper

DemL/R = Hi, Dem On

Mute L/R = L, Mute off

COMPANY:

TITLE:

RECEIVER & DIGITAL FILTER + CLOCK

DRAWN:

DATED:

CHECKED:

DATED:

QUALITY CONTROL:

DATED:

RELEASED:

DATED:

SCALE:

SHEET: OF

8