

6

5

4

3

2

1

REVISION RECORD

LTR	ECO NO:	APPROVED:	DATE:

D

D

Notes:

Q1, Q2, Q6, & Q7 use Idss 7-9 mA, BL grade

Q3 & Q8 use Idss > 10mA or V grade, or 2SK389V

Q5 & Q10 use Idss > 15mA, V grade; or parallel 2 BL grade

Q4 & Q9 use Idss 6-7 mA, BL grade

Matched all Idss for best performance!

C

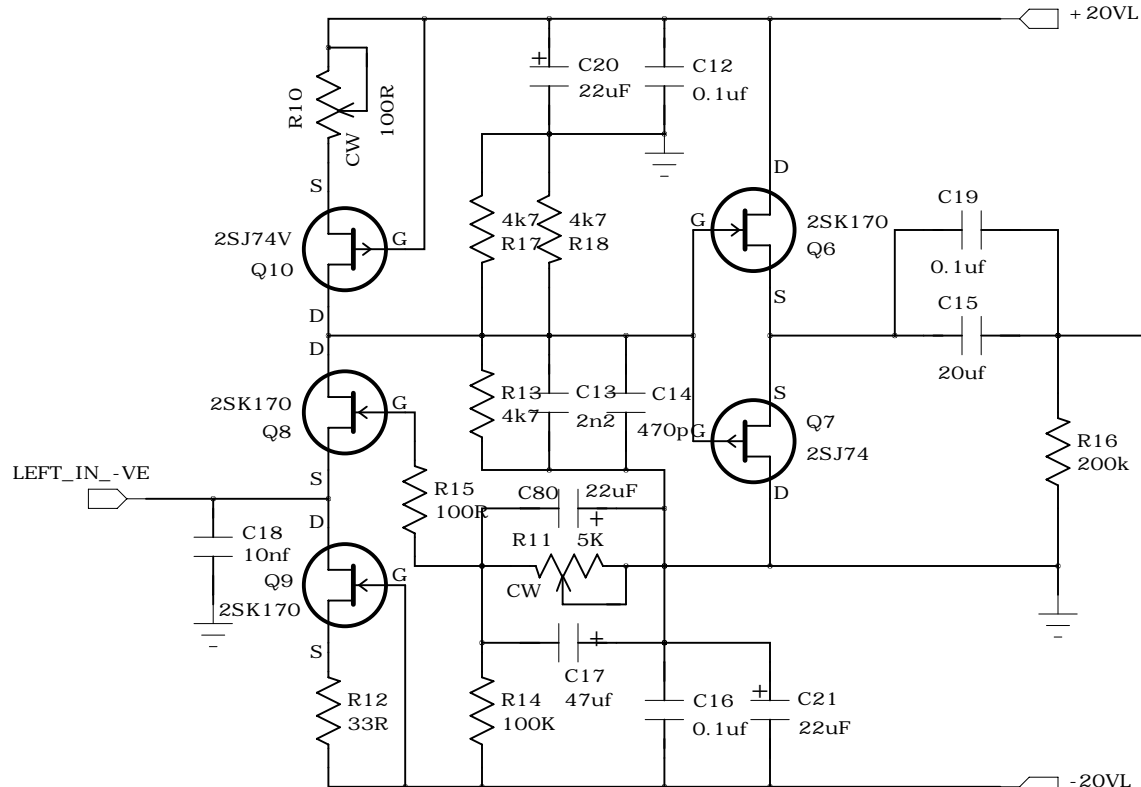
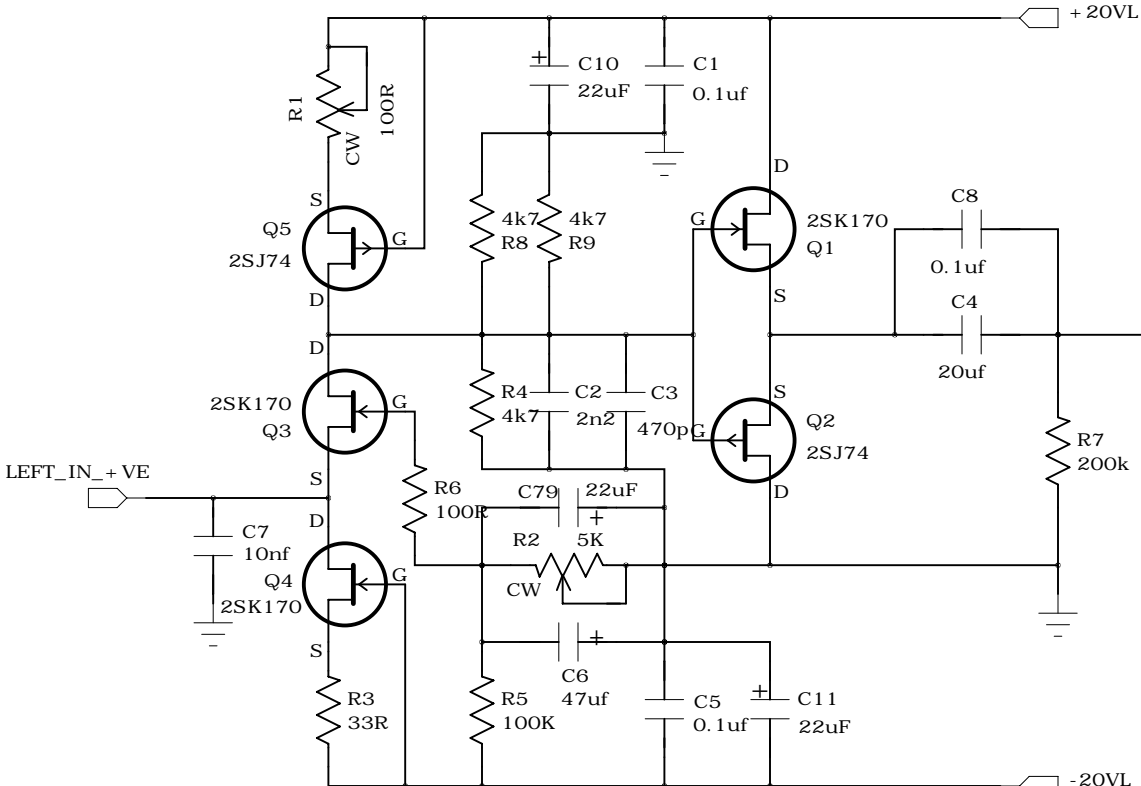
C

B

B

A

A



DRAWN: S.Cheung	DATED: 1/3/2007
CHECKED:	DATED:
QUALITY CONTROL:	DATED:
RELEASED:	DATED:

COMPANY: DIY FUN			
TITLE: Jfet IV Left Channel			
CODE:	SIZE: B	DRAWING NO:	REV: 1
SCALE: Total 8 pages		SHEET: OF 1	

6

5

4

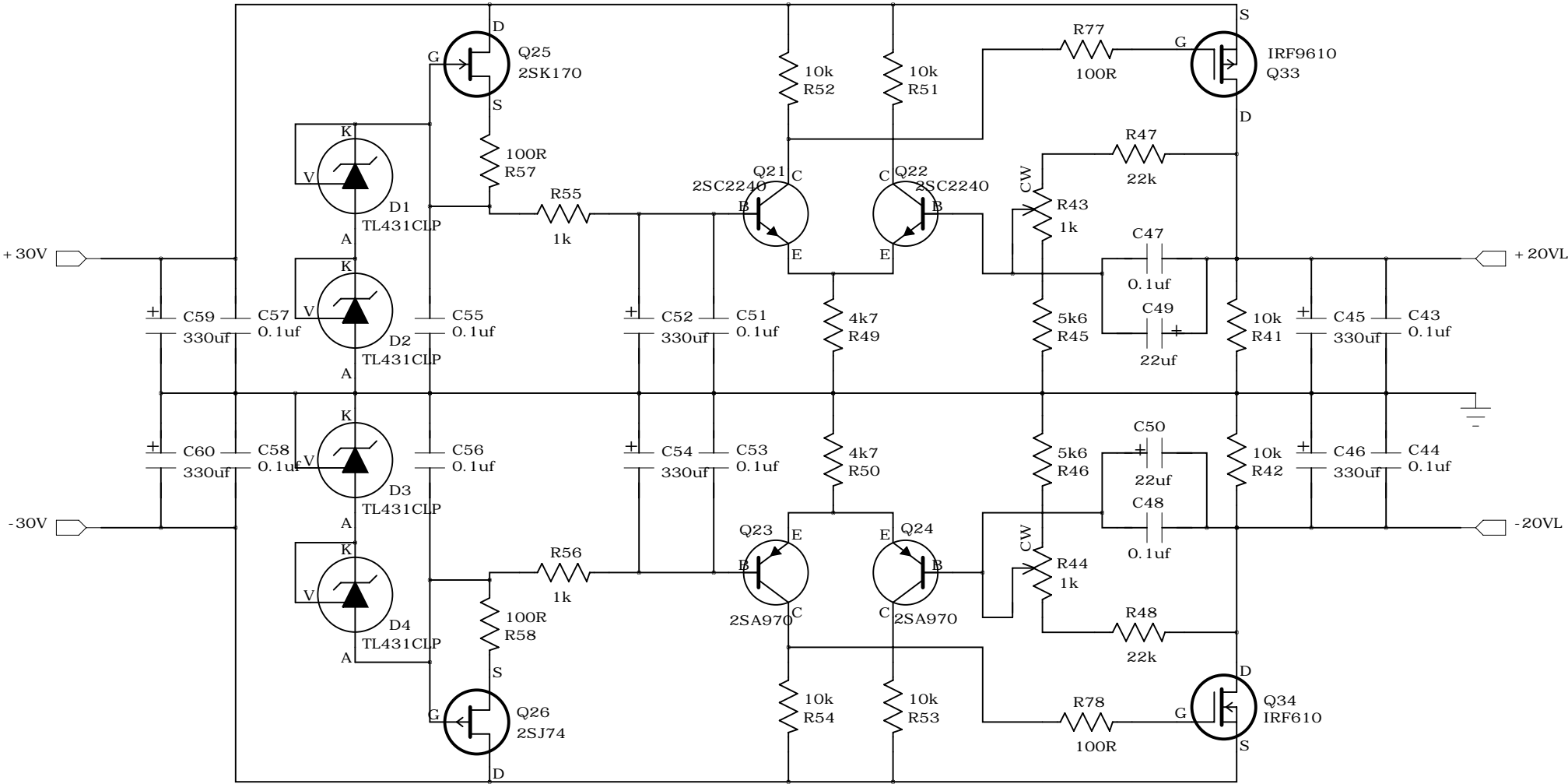
3

2

1

REVISION RECORD

LTR	ECO NO:	APPROVED:	DATE:



Notes:

Q25 & Q26 use Idss 6-7 mA

D1 & D2 and D3 & D4 is 5V voltage reference, or LM336-5V one pc

Q21 & Q22 hfe > 350, or use BC550C

Q23 & Q24 hfe > 350, or use BC557C

Q33 and Q34 add small heat sink

Q25, Q26 and its source resistor can be replaced by 2mA current diode J508

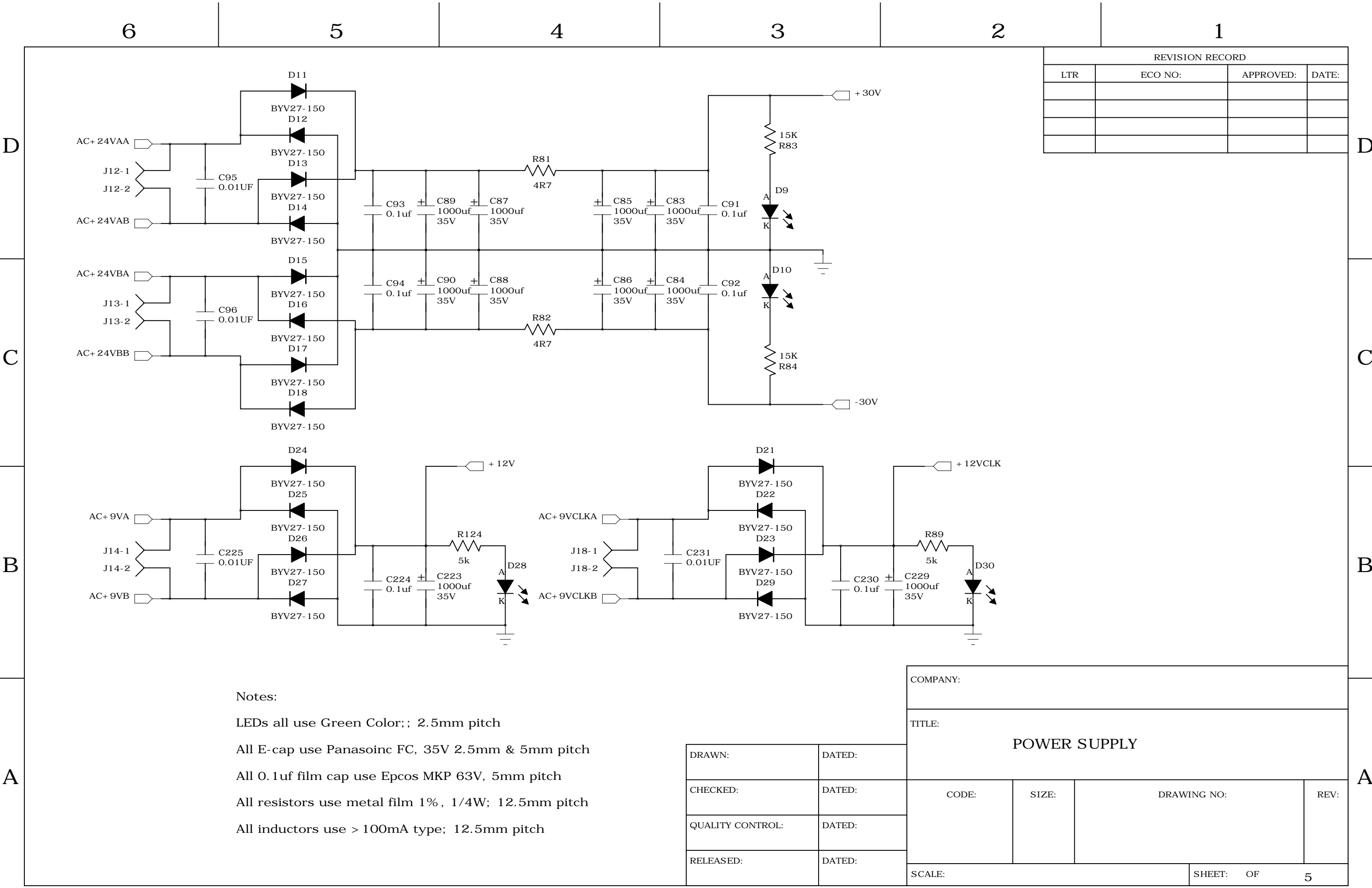
COMPANY:

TITLE:

REGULATOR LEFT JFET IV

DRAWN:	DATED:
CHECKED:	DATED:
QUALITY CONTROL:	DATED:
RELEASED:	DATED:

CODE:	SIZE:	DRAWING NO:	REV:
SCALE:		SHEET: OF	3



Notes:

LEDs all use Green Color;; 2.5mm pitch

All E-cap use Panasoinc FC, 35V 2.5mm & 5mm pitch

All 0.1uf film cap use Epcos MKP 63V, 5mm pitch

All resistors use metal film 1%, 1/4W; 12.5mm pitch

All inductors use > 100mA type; 12.5mm pitch

DRAWN:

CHECKED:

QUALITY CONTROL:

RELEASED:

DATED:

DATED:

DATED:

DATED:

COMPANY:

TITLE:

POWER SUPPLY

CODE:

SIZE:

DRAWING NO:

REV:

SCALE:

SHEET: OF 5

