

Morgan Jones RIAA Pre-Amplifier

Cartridge - Ortofon Concorde Pro

Manufacturers specifications and equivalent circuit component (in parentheses):

Internal Inductance: 450mH (L1)

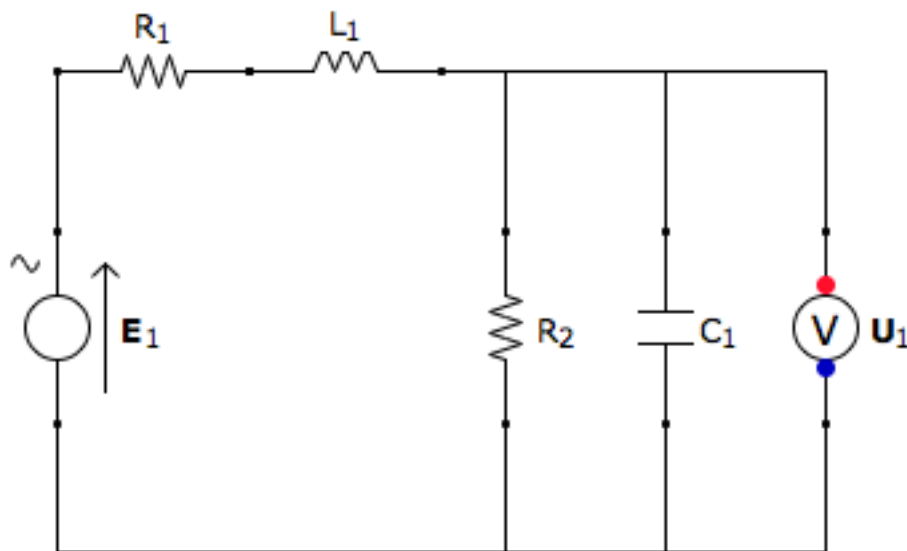
Internal Resistance: 750 ohms (R1)

Output voltage @ 1kHz, 5cm/sec: 5mV (E1)

Recommended load capacitance: 200pF - 600pF (C1)

Recommended load resistance: 47k ohms (R2)

Cartridge & valve input equivalent circuit:



Frequency response formulae and graphed result:

(NOTE: I'm targeting a 250pF load capacitance and I intend to re-wire the tone arm with Cardas to make sure I can hit this)

