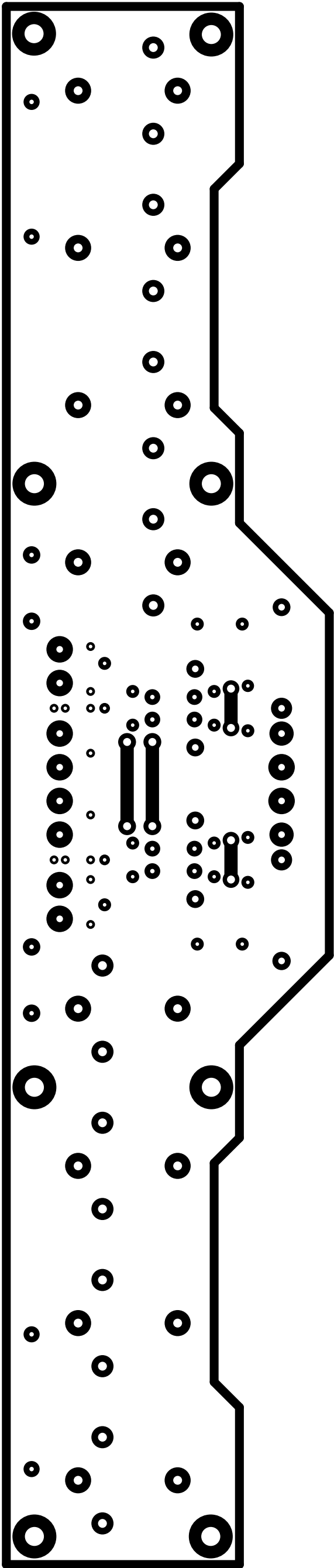
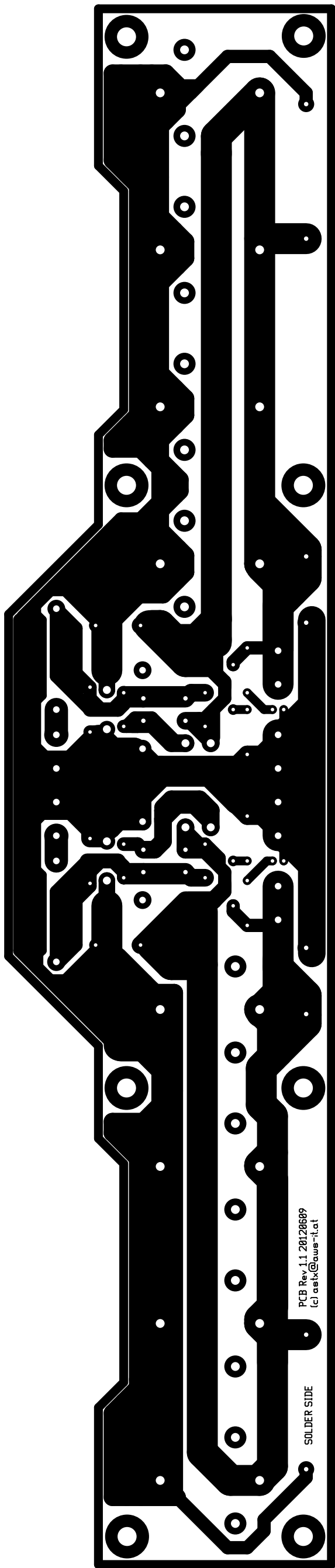
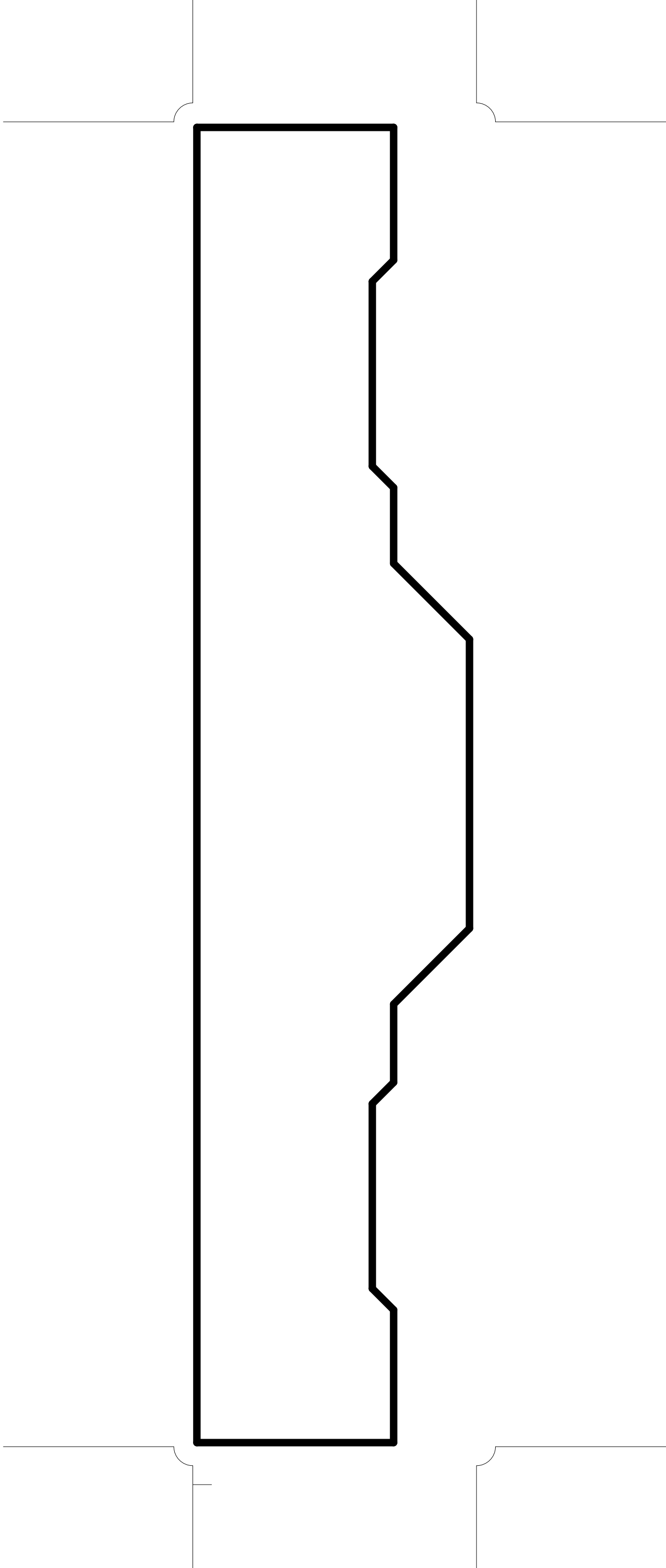
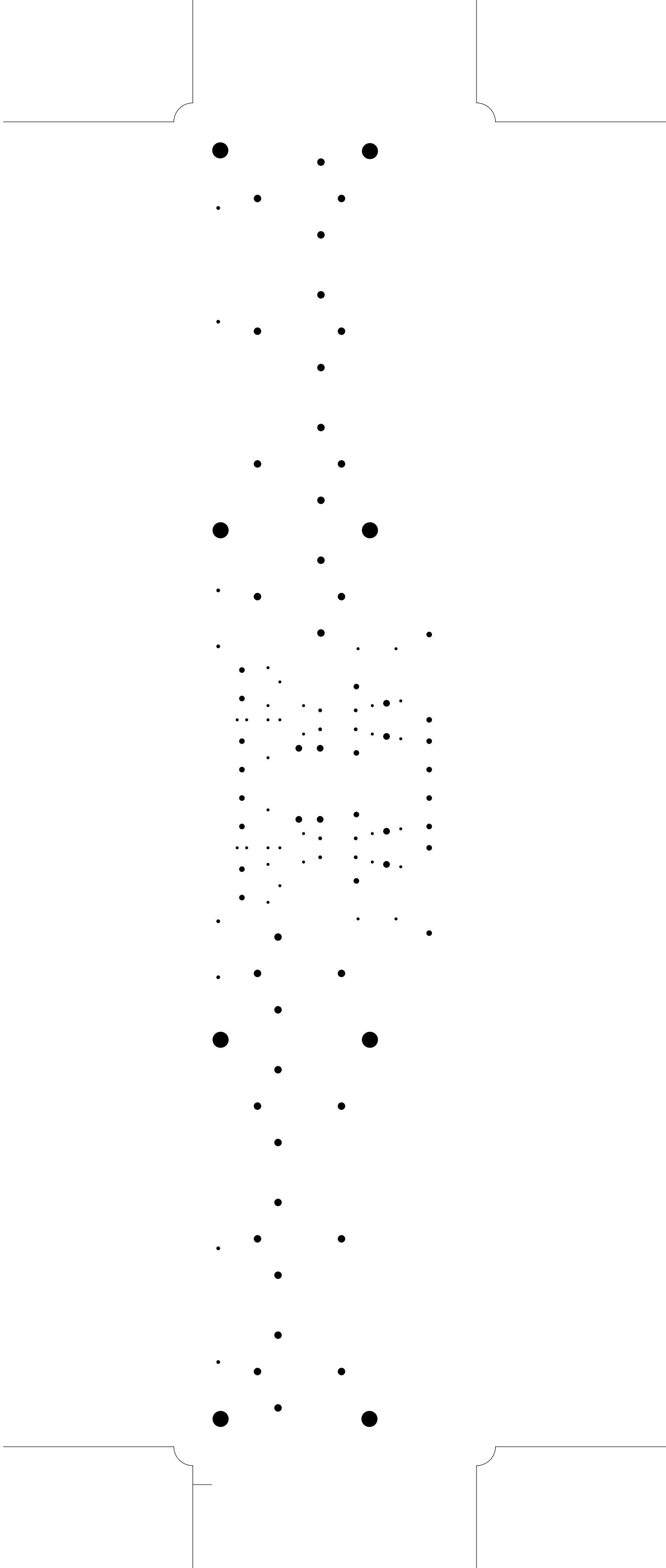


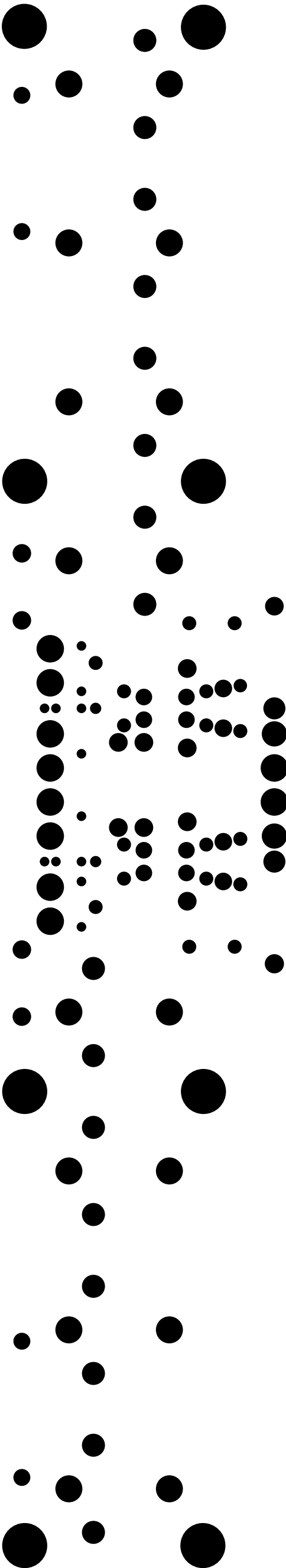
1. Table of Contents (This Page)
Created on Wed Jan 18 20:14:37 2017
2. component
3. solder
4. outline
5. plated-drill
6. componentmask
7. soldermask
8. topsilk
9. bottomsilk
10. topassembly
11. bottomassembly
12. fab

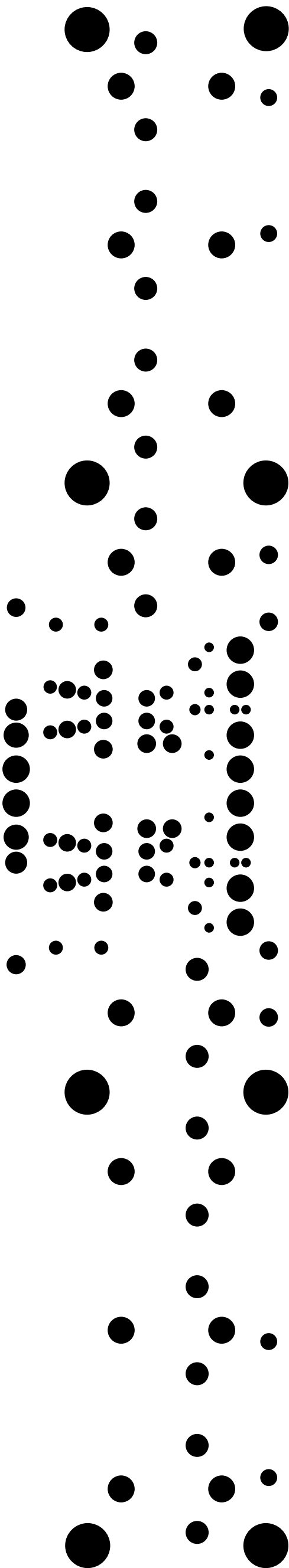


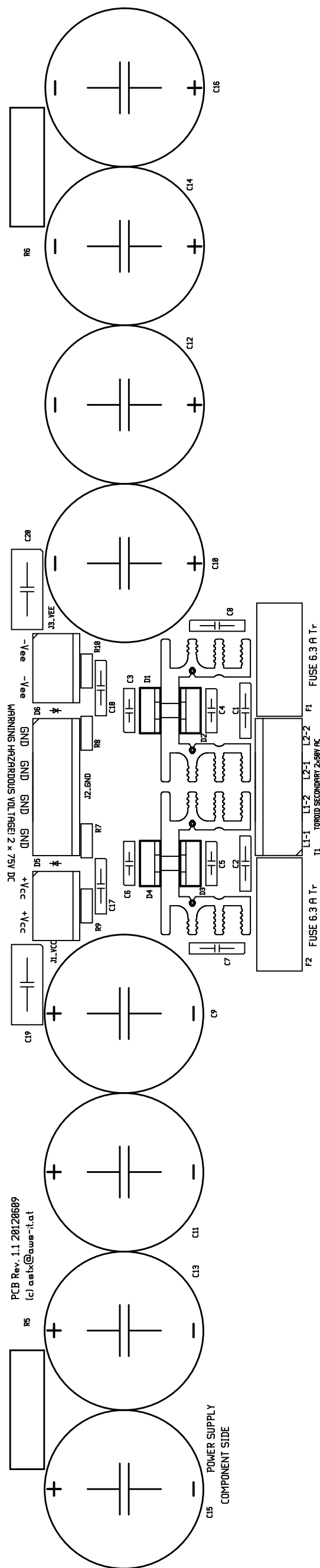


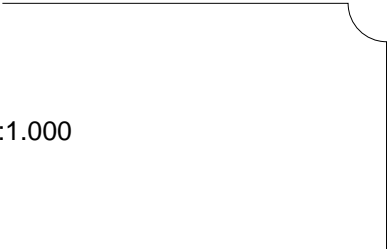
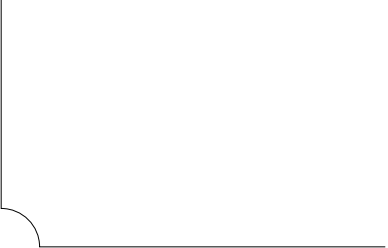
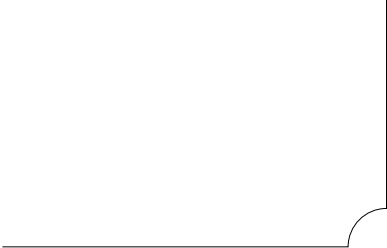


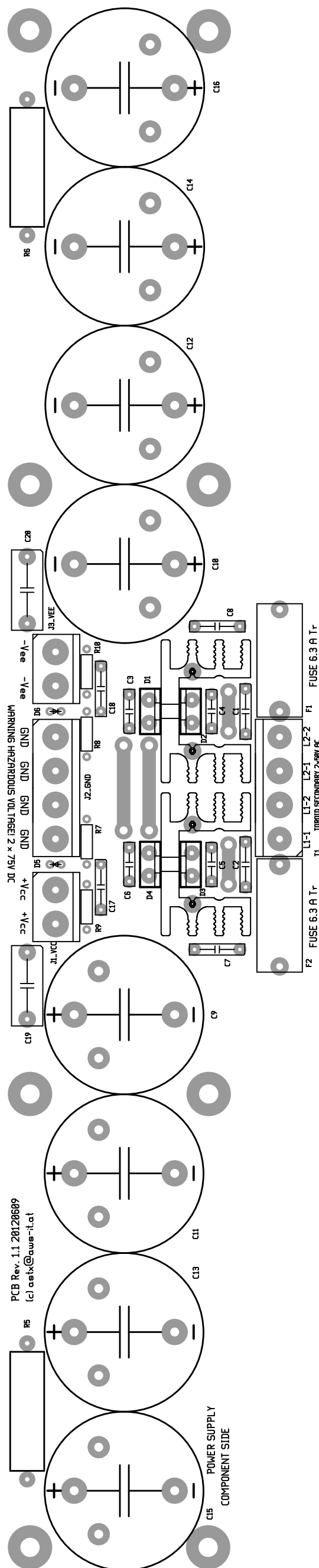


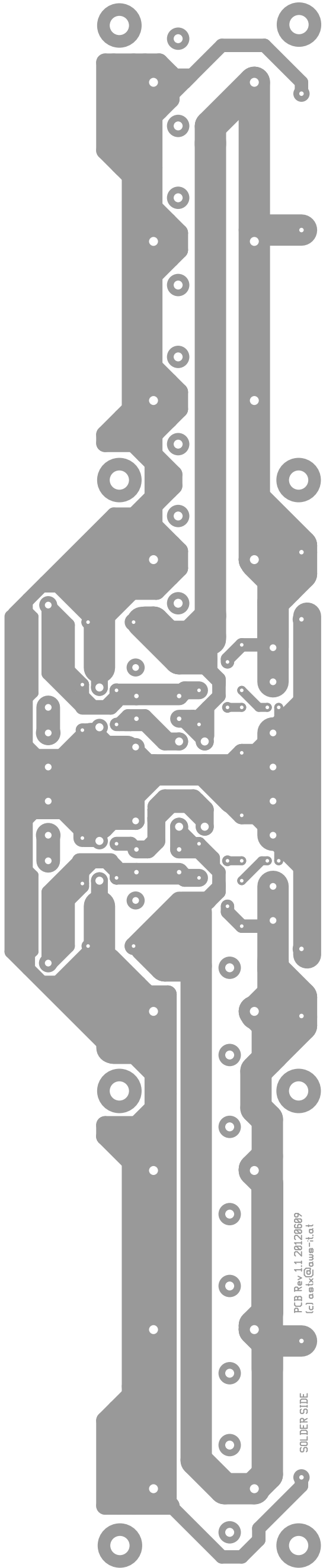












bottomassembly (mirrored), scale = 1:1.000
amp1_powersupply.pcb

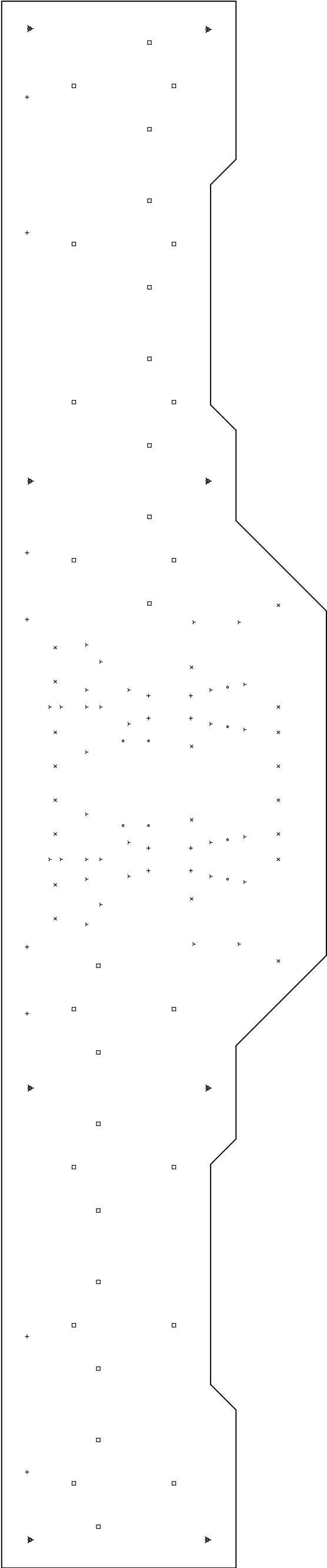
There are 6 different drill sizes used in this layout, 116 holes total

Symbol	Diam. (Inch)	Count	Plated?
Y	0.032	32	YES
+	0.039	16	YES
x	0.059	20	YES
o	0.071	8	YES
□	0.079	32	YES
⚡	0.170	8	YES

Title: (unknown) - Fabrication Drawing

Author: toni

Date: Mon 18 Jun 2017 19:14:37 GMT UTC



Board outline is the center-line of this path