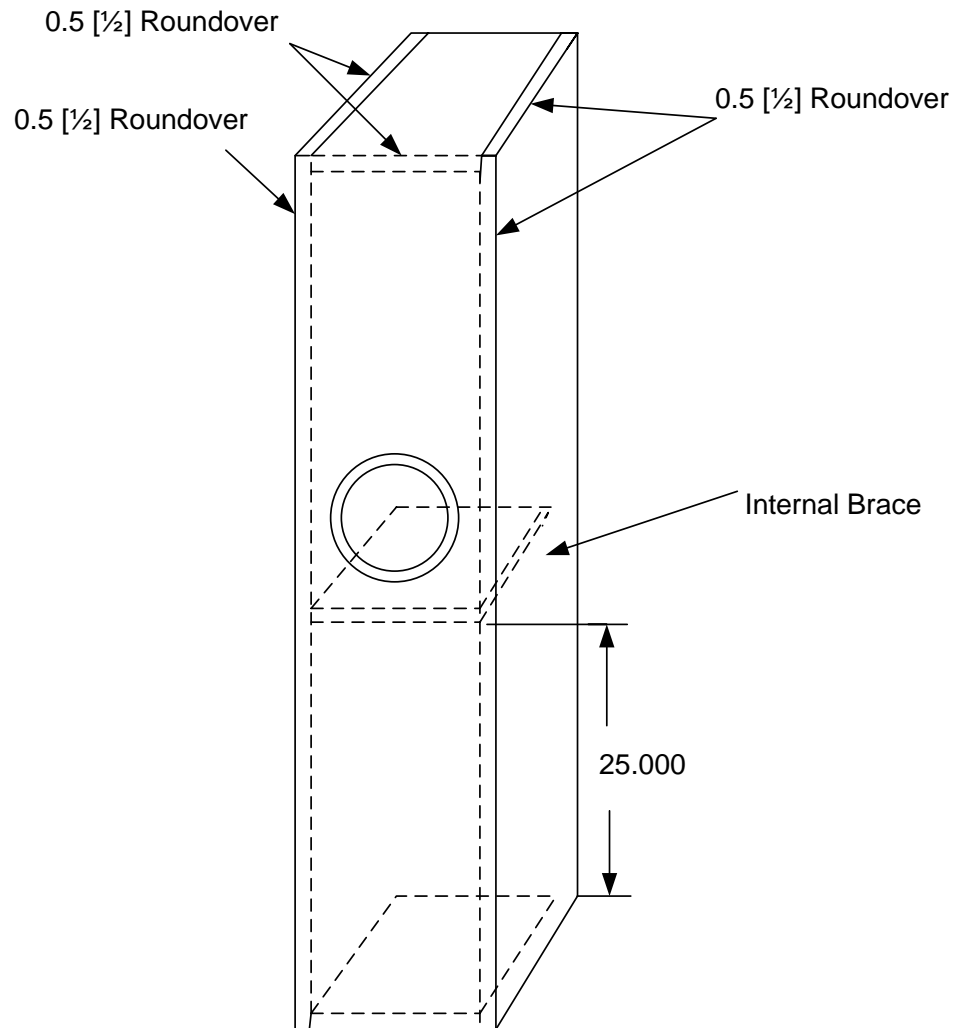


# Alpair 10 MLTL

## Overall Assembly



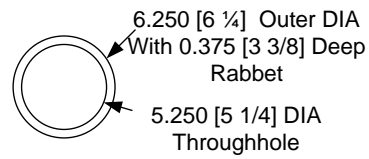
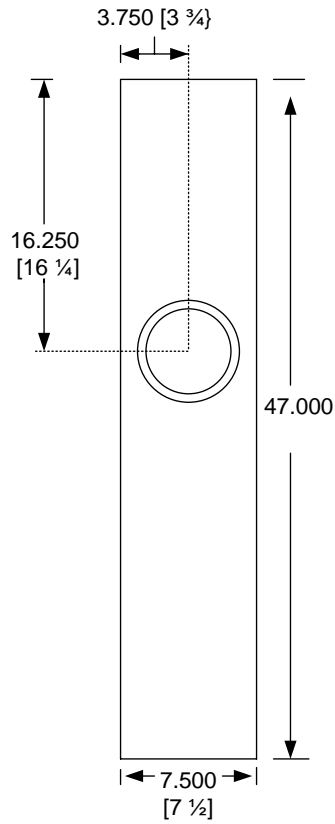
### Notes

1. All material is nominally 0.75 [ $\frac{3}{4}$ ] thickness
2. Outside view of each panel is shown
3. Dimensions are nominal and inches.
4. Terminal plate dimensions for Madisound TD biamp cup
5. Port is 2.0625 [ $2 \frac{1}{16}$ ] diameter and 4.0 long

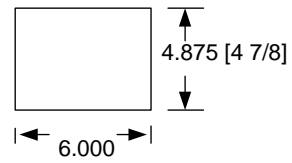
©2008 Jim Griffin  
Noncommercial Use Only

## Alpair 10 MLTL

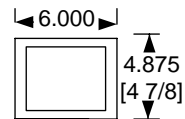
Front Baffle (MDF)



Bottom Panel  
(MDF)



Internal Brace  
(1 x 1 Hardwood)



# Alpair 10 MLTL

