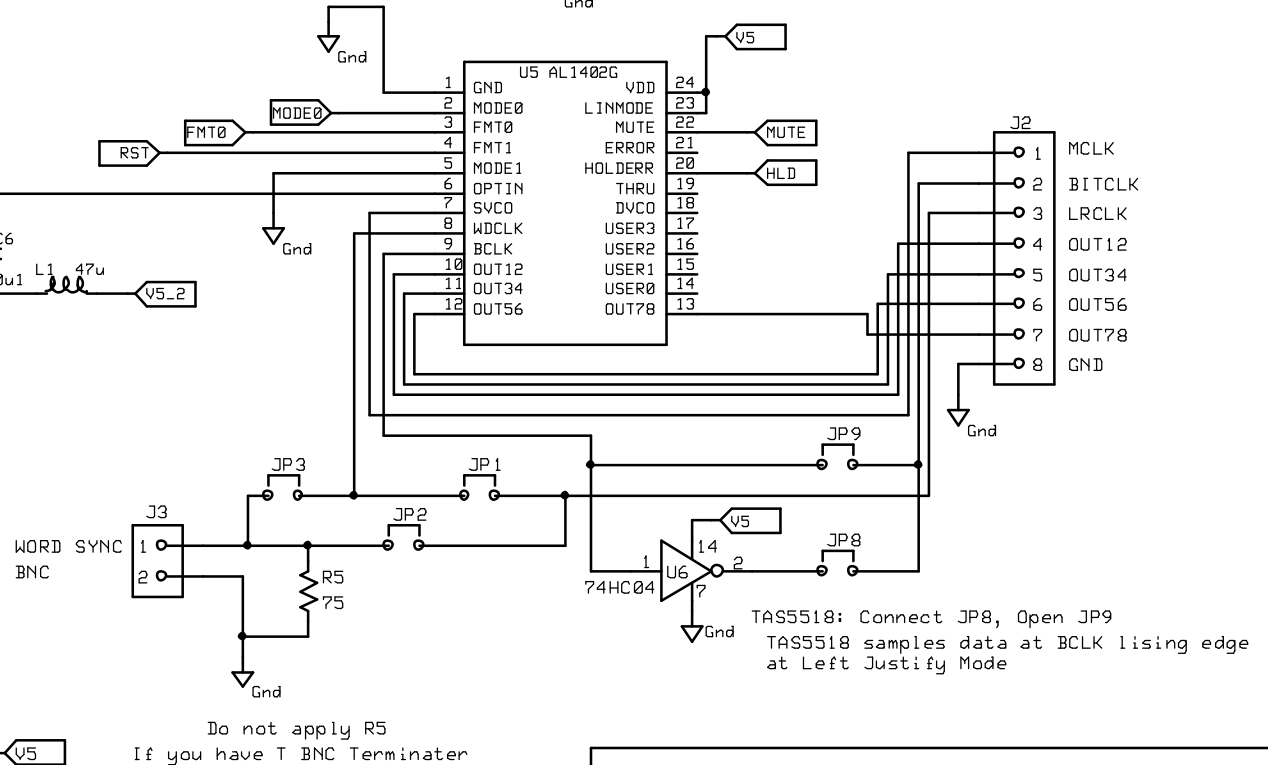
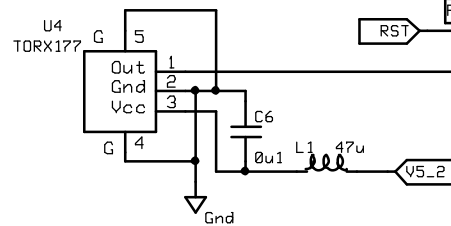
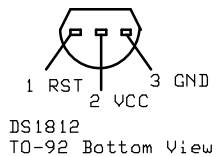
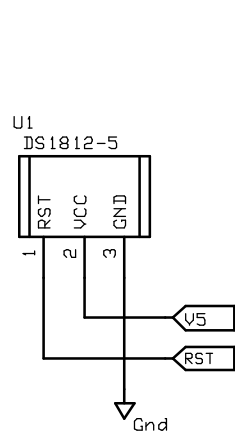
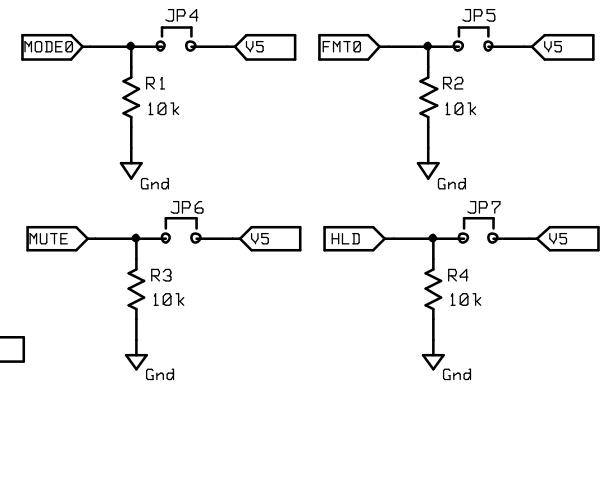


Connect JP5. (Left Justify Mode)

AL1402G Master Mode : Connect JP1
Open JP2, JP3, JP4

Word Sync Mode: Open JP1
Connect JP2, JP3, JP4

Word Sync must be same signal for
ADAT output board and AL1402G



Do not apply R5
If you have T BNC Terminator

TAS5518: Connect JP8, Open JP9
TAS5518 samples data at BCLK rising edge
at Left Justify Mode

Sheet 1

AL1402G ADAT Receiver

K00N3876

Rev 1.0

2009/07/01

AL1402G