

<2> additiona DC servo

<2>-1 Outline

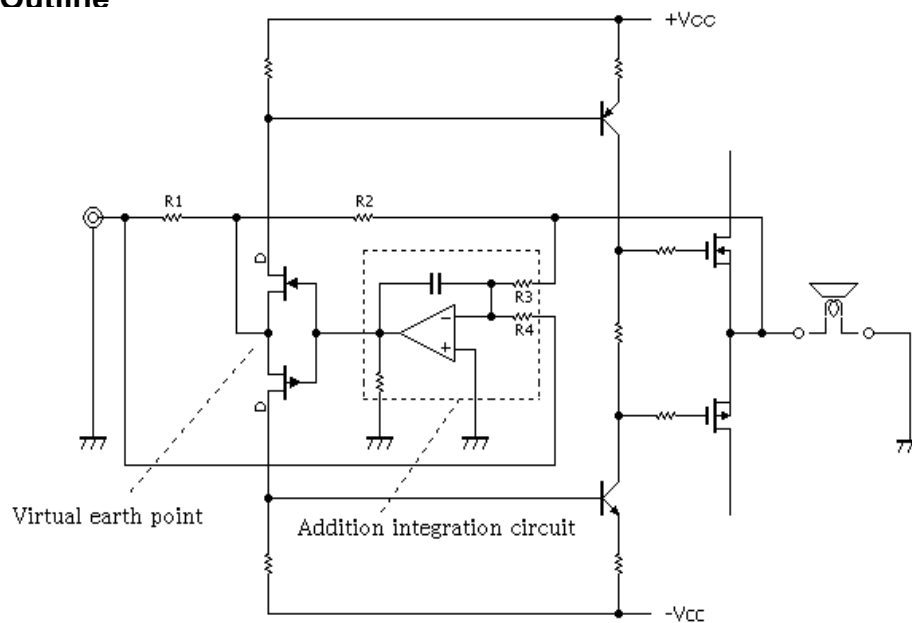


Fig.0 Add DC SERVO Schematic

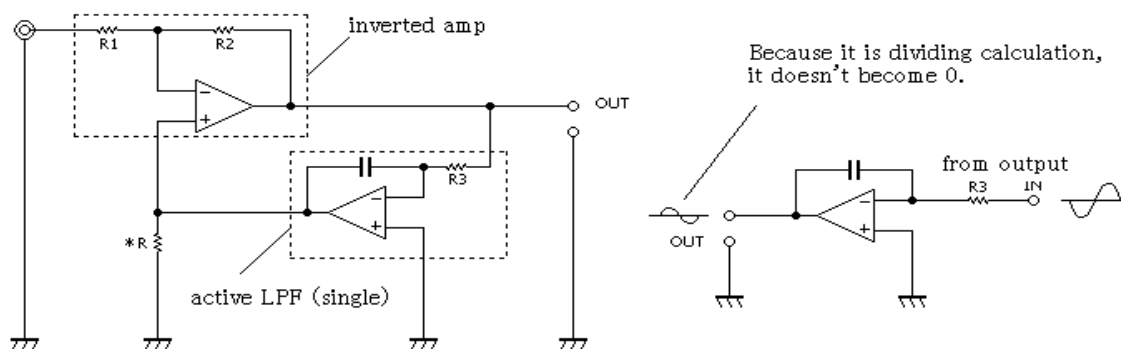


fig.1 NORMAL DC SERVO

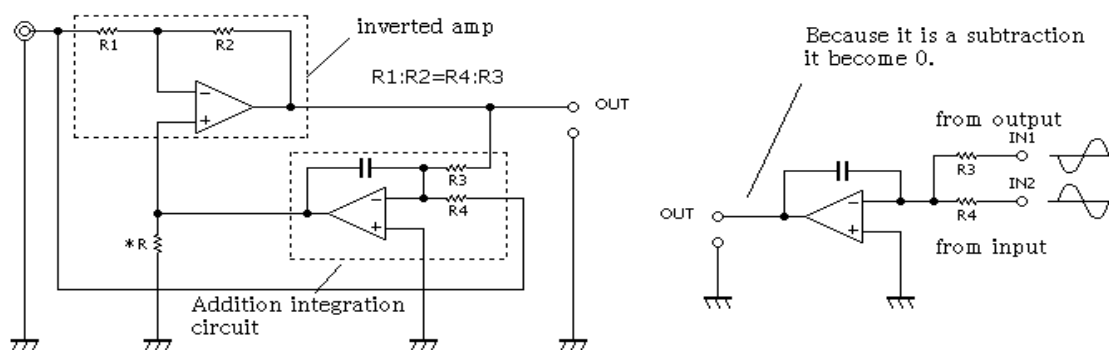


fig.2 This amp DC SERVO (additional DC SEVO)

NEXT , the test by other circuit (but use same method) 's data ,I upload.

R1= 3.3K ohm
 R2= 47K ohm
 R3=470K ohm
 R4= 33K ohm
 C= 0.22 micro F