



**R-Tools Simulation - Design Output Summary**

User: Anthony Tagg (atagg@etrattech.com)  
Project: Aelph  
Simulation Date: 2009-02-09 19:01:04

**Thermal Design Details**

Heatsink type: Extrusion  
Part number: Extrusion: 9002  
Weight: 2.57309 kg  
Heatsink dimensions: 176.81 mm wide x 203.2 mm long x 70.86 mm high  
Material: Aluminum  
Finish: undefined

**Environment**

Ambient Temperature: 72.0 F  
Altitude: 300.0 ft

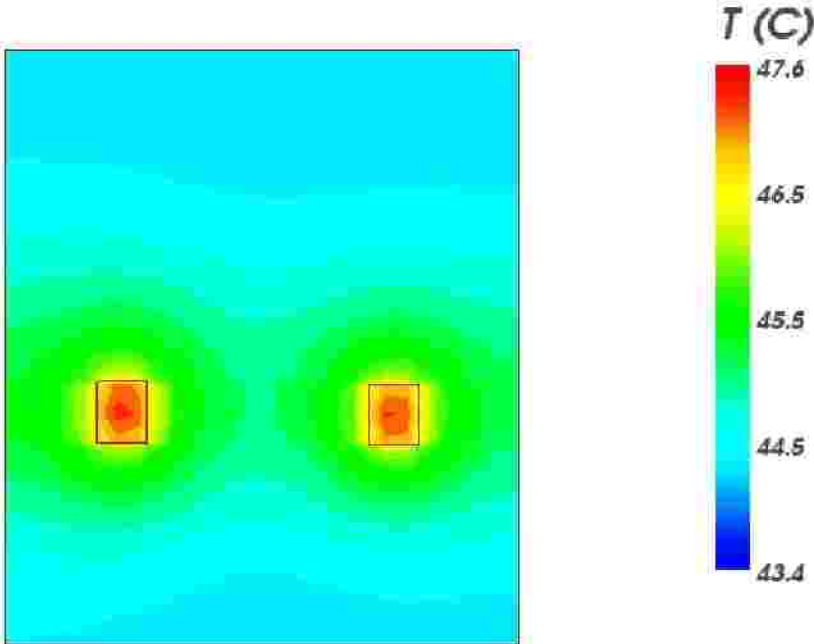
**Thermal Design Details**

Source Names	%sc	Power	Temperature			
			Tsink-avg	Tsink-max	Tcase	Tjunction
			C	C	C	C
source3	1.0%	24.0 W	47.0	47.5	47.5	91.3
source2	1.0%	24.0 W	47.1	47.6	47.6	91.3

**Hydraulic Design Details**

Type of Flow: Natural convection  
Fluid: Air  
Total Pressure Drop: 4.713 Pa  
Exit Temperature: 42.2 C

**Baseplate Temperature Profile**



[Download Qfin4 project file](#)