

You get low-distortion, high input impedance, low output impedance, and good bandwidth since there's no Miller effect. It's single-stage, single-ended, and really, really simple." He tore-off a blank scoresheet, turned it over, sketched something on the back and handed it to me. "Here you go, man! It doesn't get much simpler than that."

Here's the schematic he gave me:

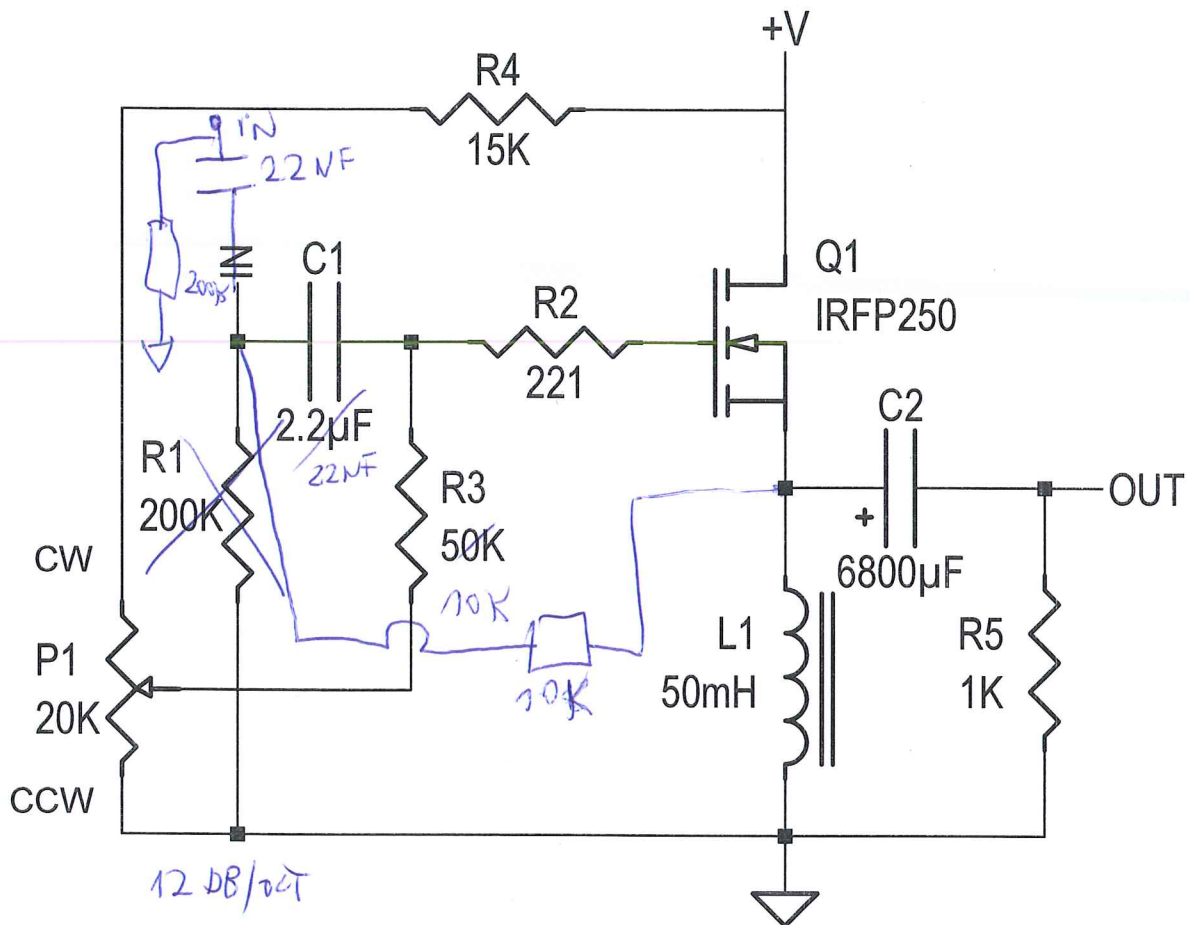


Figure 1

"Wow, that *is* simple," I said, "but what about the power supply?"

"Just use one of those laptop switchers," he said "that'll be great for beginners. You could use anything decent from like 12 to 24 volts."

"Oh, great, but don't those have a lot of ripple, Dude?" I asked.