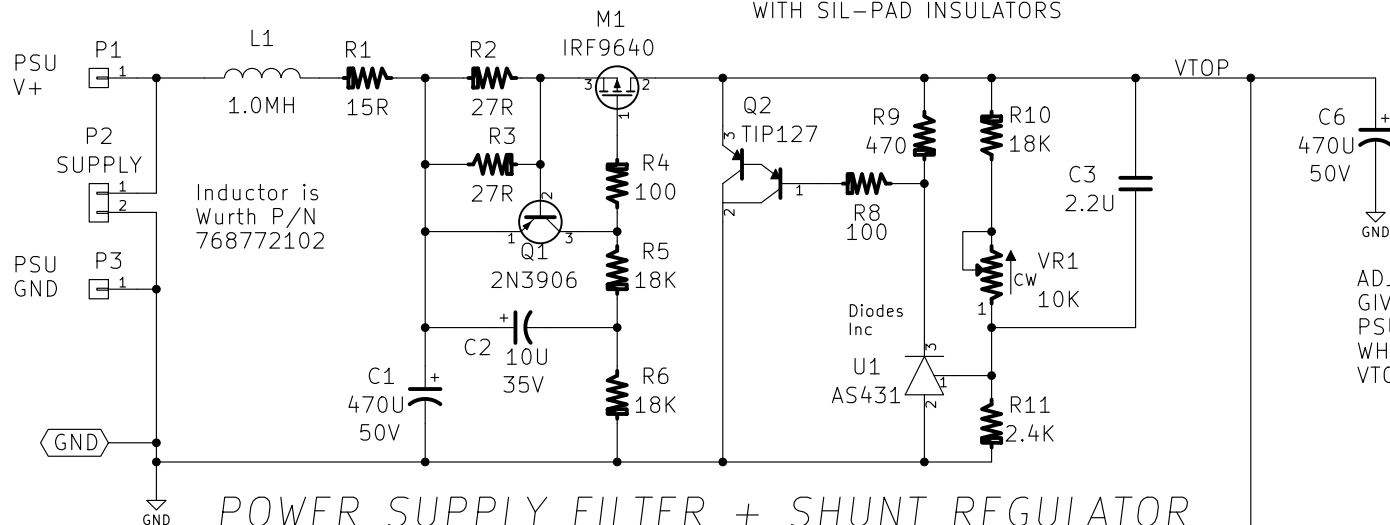


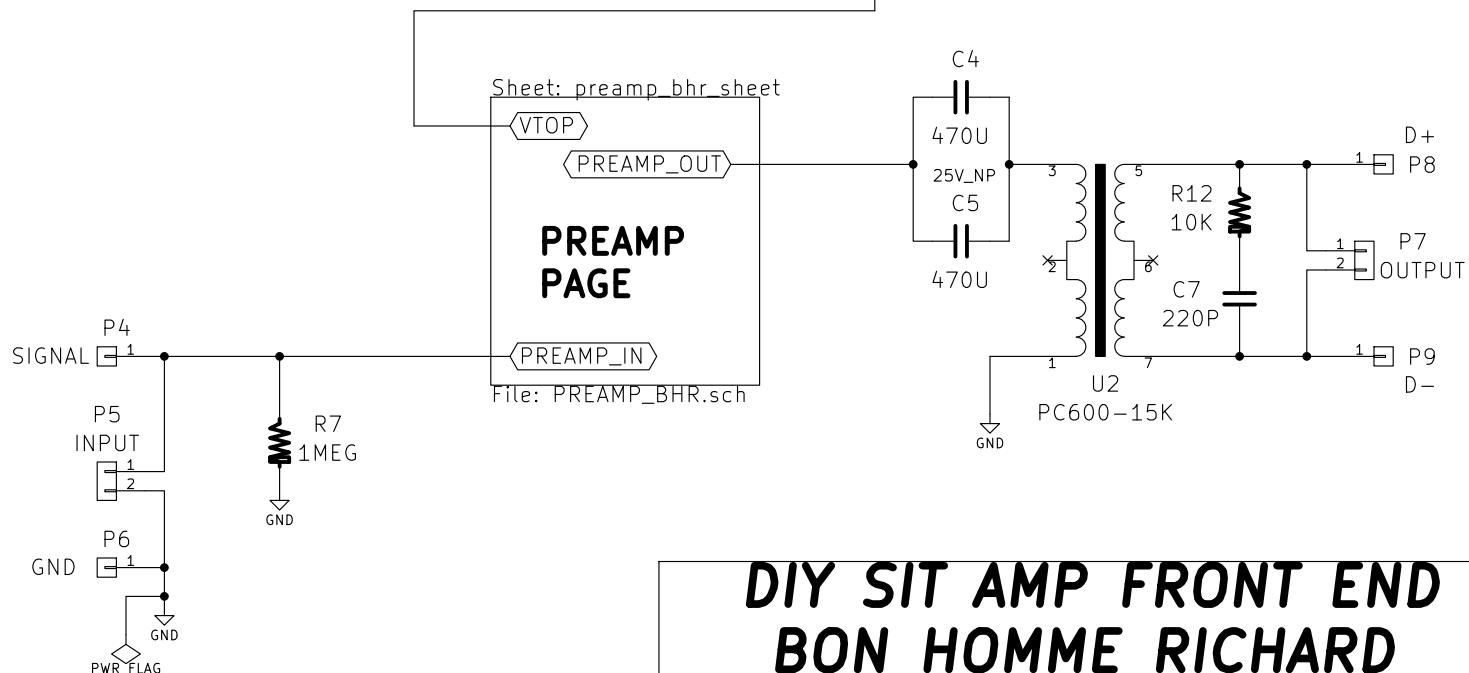


M1 AND Q2 ARE MOUNTED  
ON AAVID 5073 HEAT SINKS  
WITH SIL-PAD INSULATORS



POWER SUPPLY FILTER + SHUNT REGULATOR

M1 REQUIREMENTS:  
Pch MOS IN TO-220  
PINOUT G-D-S  
VDSmax > 50V  
IDSmax > 3A  
POWERmax > 25W  
LOTS OF OTHER PART  
#s WILL WORK FINE



# DIY SIT AMP FRONT END BON HOMME RICHARD

Sheet: /  
File: PASS\_SIT\_DIY\_BonHomme.sch

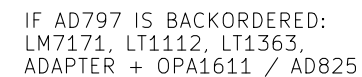
Title:

Size: USLetter Date:  
KiCad E.D.A. kicad 4.0.4-stable

Rev:  
Id: 1/2

REV.C 09 NOV 2021

REV.C 09 NOV 2021



THRU-HOLE FOOTPRINT IS A  
PERFECT CIRCLE WITH SILK TEXT  
LABELS "S" "G" "D". CAN ACCEPT  
ANY OF FAIRCHILD J107, J112, J113  
OR LSK170 / 2SK170 FROM LINEAR  
SYSTEMS / TOSHIBA.

GENERAL CASE USING \*N\* 1% RESISTORS:  
GUARANTEED MATCH  $\leq 2\% / (N - 1)$

**PREAMP\_BHR**

Rev:
Id: 2/2